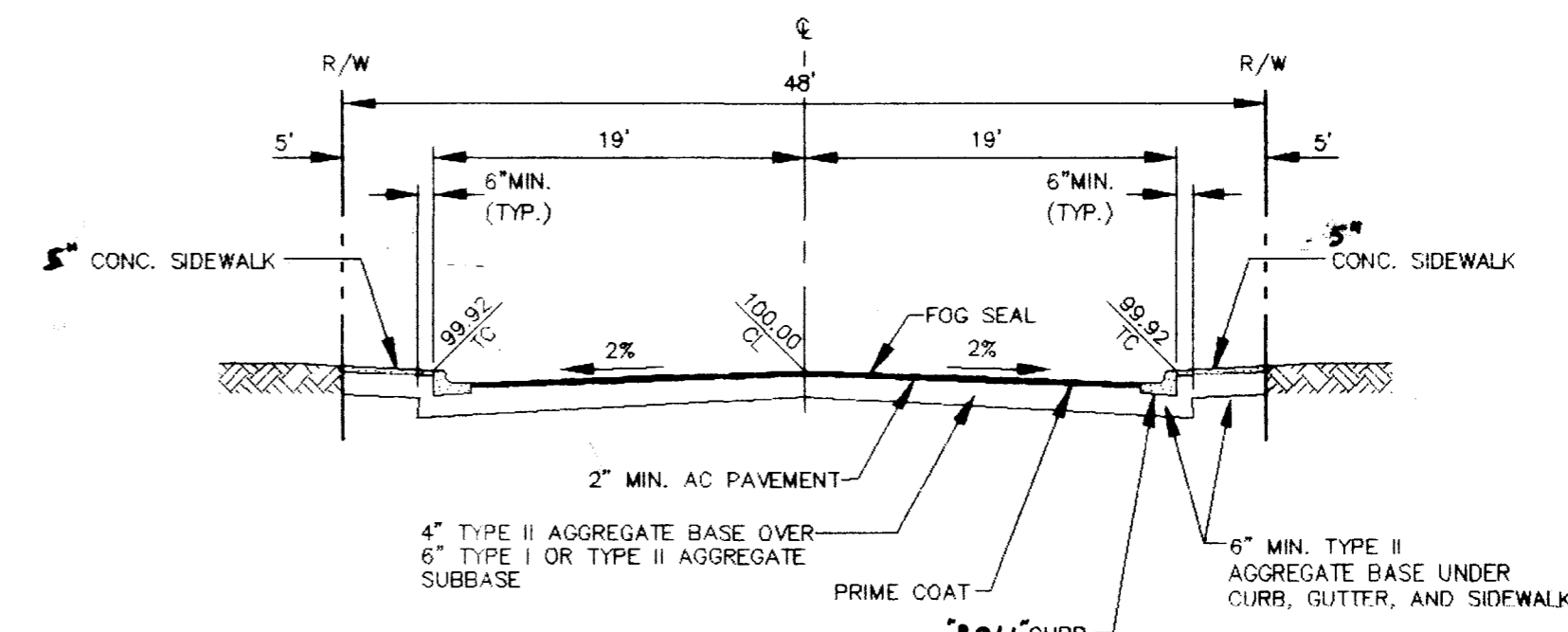
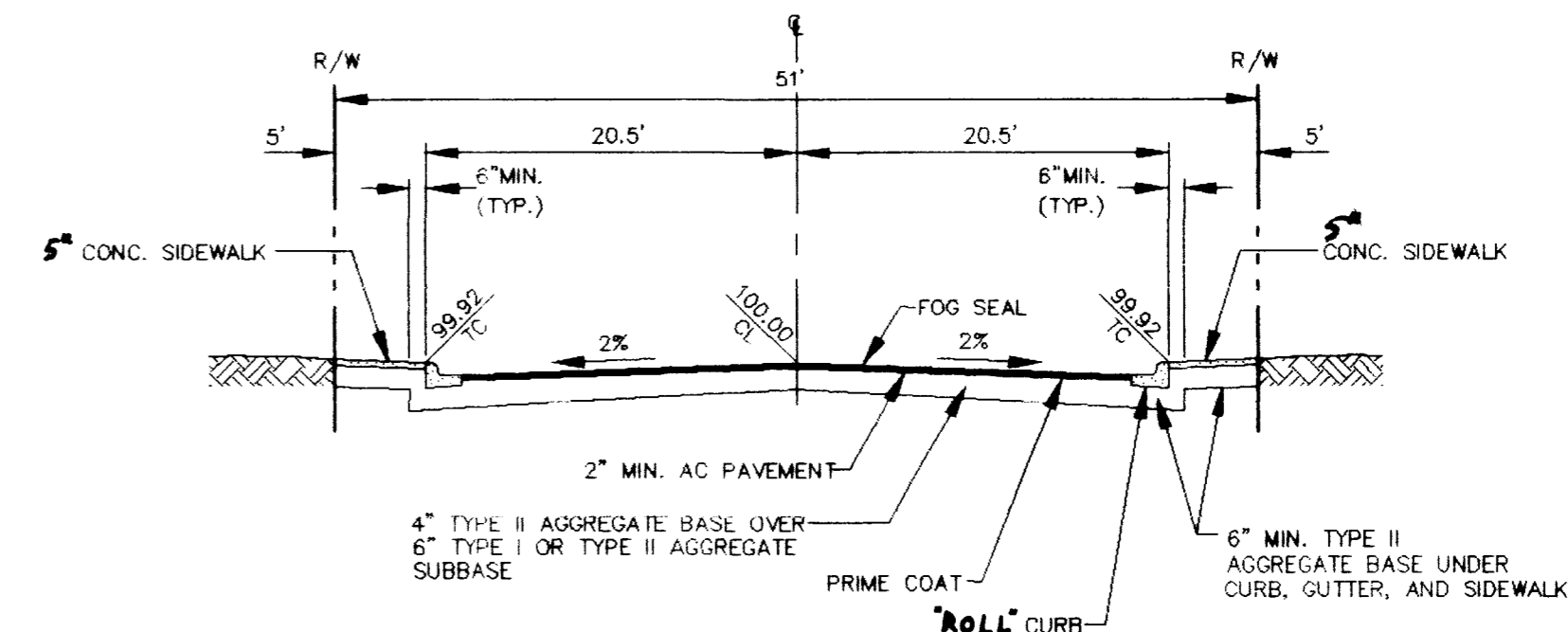
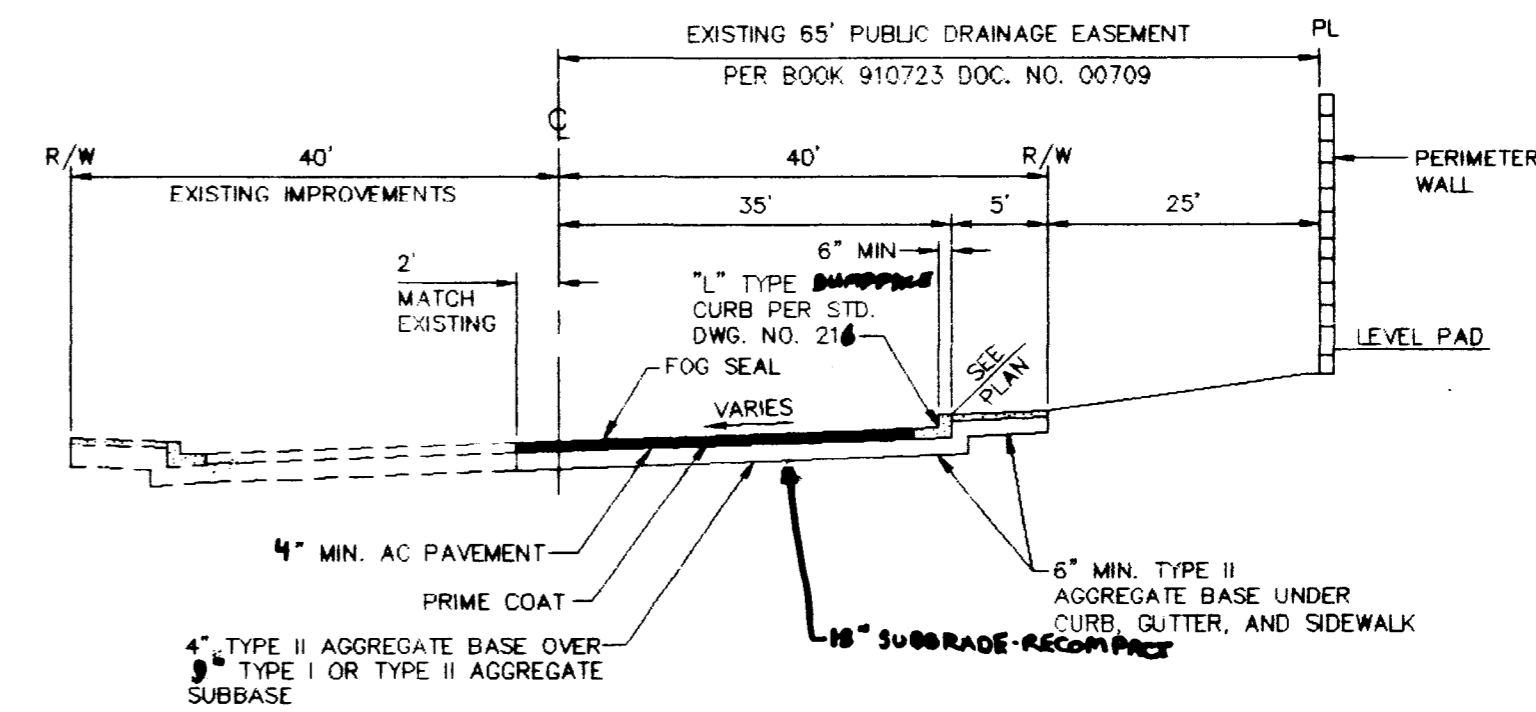
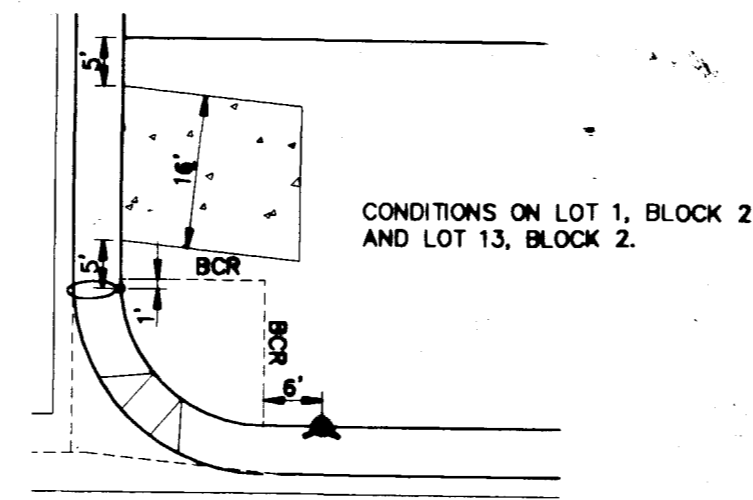
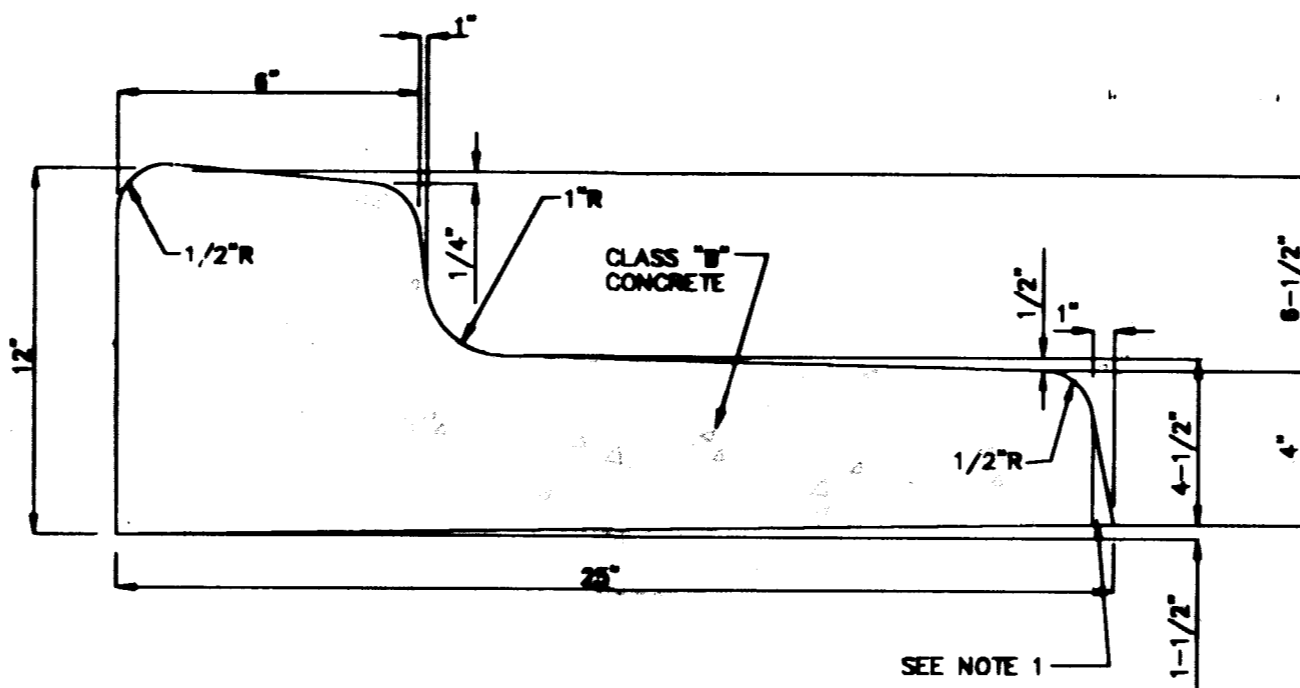


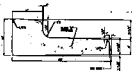
- NOTES:**
- 1" BATTER ON GUTTER FACE OPTIONAL.
 - WHERE LONGITUDINAL SLOPE IS LESS THAN 0.4% THE FLOW LINE SHALL BE WATER TESTED.



HELLER DEVELOPMENT COMPANIES		ORION ENGINEERING AND SURVEYING, INC.	
CALIFORNIA * NEVADA 8453 Reseda Boulevard Northridge, CA 91324		3068 E. SUNSET ROAD, SUITE 9 LAS VEGAS, NEVADA 89120 (702) 739-5921 FAX (702) 739-5929	
TYPICAL STREET SECTIONS		Washington & Sandhill - Unit 2	
DRAWN BY: RGP	DESIGNED BY: RGP	CHECKED BY: JMB	PROJECT NO: 020-8001
05-20-98	05-20-98	05-20-98	SCALE: N/A
SEAL		SEAL	
SHEET S5		SHEET S5	
11 OF 16 SHEETS		11 OF 16 SHEETS	
DRAWING NO. 107Y-4556-2		DRAWING NO. 107Y-4556-2	



1. TYPICAL SIDE OF ROAD SECTION
 2. TYPICAL GUTTER SECTION



3. TYPICAL STREET SECTION



4. TYPICAL STREET SECTION



5. TYPICAL SIDE OF ROAD SECTION
 6. TYPICAL STREET SECTION



7. TYPICAL STREET SECTION



8. TYPICAL STREET SECTION

		DEPARTMENT OF PUBLIC WORKS CITY OF SEATTLE 400 WEST ALPINE AVENUE SEATTLE, WASHINGTON 98108	
PROJECT NO. _____ SHEET NO. _____	DATE _____ DRAWN BY _____ CHECKED BY _____ SCALE _____	DESIGNER'S NAME ADDRESS CITY STATE	CONTRACT NO. _____ SHEET NO. _____