

### BASIS OF BEARINGS

BEING THE SOUTH LINE OF THE SOUTHEAST QUARTER (SE 1/4) OF THE NORTHEAST QUARTER (NE 1/4) OF SECTION 30, T.20S., R.62E., M.D.M., CITY OF LAS VEGAS, CLARK COUNTY, NEVADA. SAID LINE BEARS N. 89°53'26" E.

### BENCHMARK

NORTH AMERICAN VERTICAL DATUM 1988 (NAVD88)  
B.M. NO. 14 STATION 2LV02 3056  
FOUND RIVET AND SQUARE ALUMINUM PLATE IN TOP OF CURB, IN THE SOUTHWEST CORNER OF SANDHILL RD. AND HARRIS AVE.  
ELEVATION = 1785.134 FEET  
544.8623 METERS

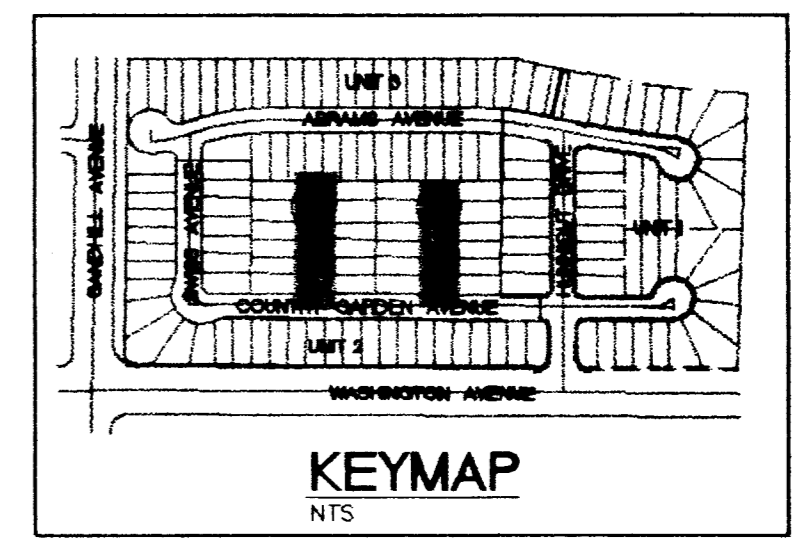
### LINE TABLE

LINE	DIRECTION	DISTANCE
L1	N 00°20'50"E	111.28
L2	N 00°20'50"E	111.28
L4	N 00°20'50"E	109.60
L5	N 00°20'50"E	109.60

### CURVE TABLE

CURVE	RADIUS	LENGTH	TANGENT	DELTA
C1	21.00'	18.12	9.67	49°25'40"
C2	21.00'	18.12	9.67	49°25'40"
C3	40.50'	197.11	34.68	278°51'20"
C4	20.00'	31.42	20.00'	90°00'00"
C5	20.00'	31.42	20.00'	90°00'00"
C6	21.00'	18.12	9.67	49°25'40"
C7	21.00'	18.12	9.67	49°25'40"
C8	40.50'	197.11	34.68	278°51'20"
C9	20.00'	31.42	20.00'	90°00'00"
C10	20.00'	31.42	20.00'	90°00'00"

NOTE:  
ALL CURVE AND LINE TABLE INFORMATION IS TAKEN FROM THE BACK OF CURB. (TYPICAL)



### CONSTRUCTION NOTES

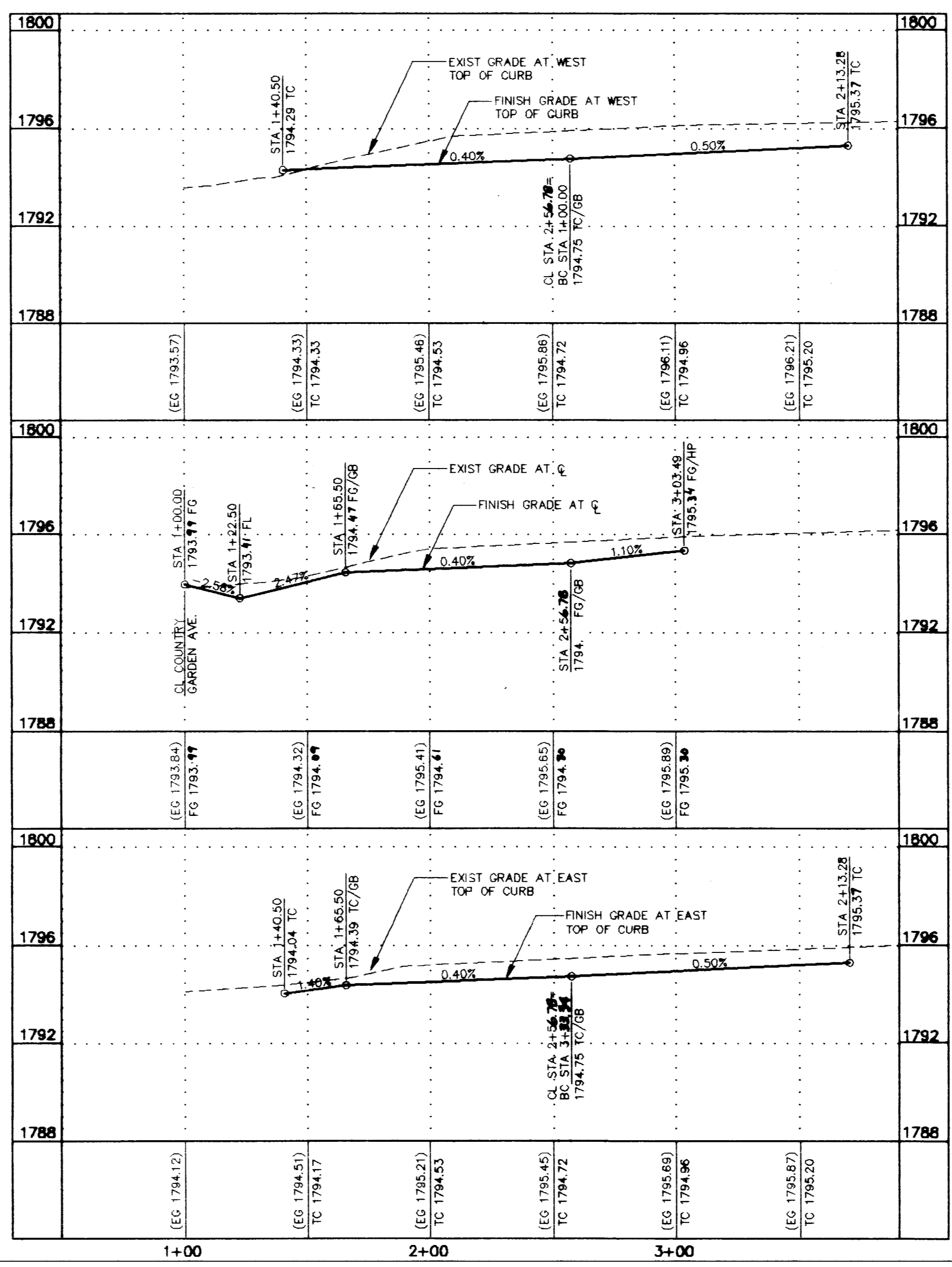
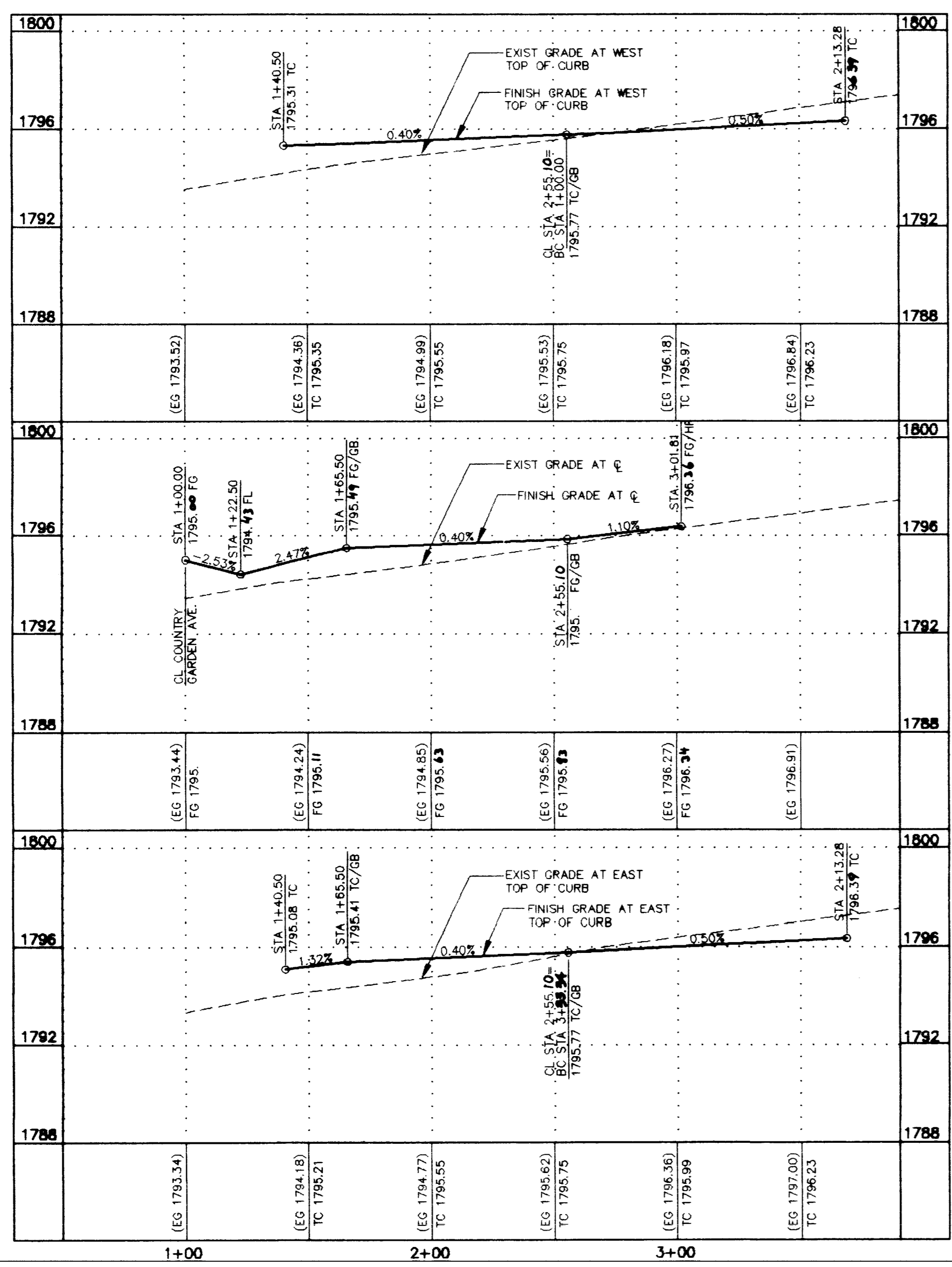
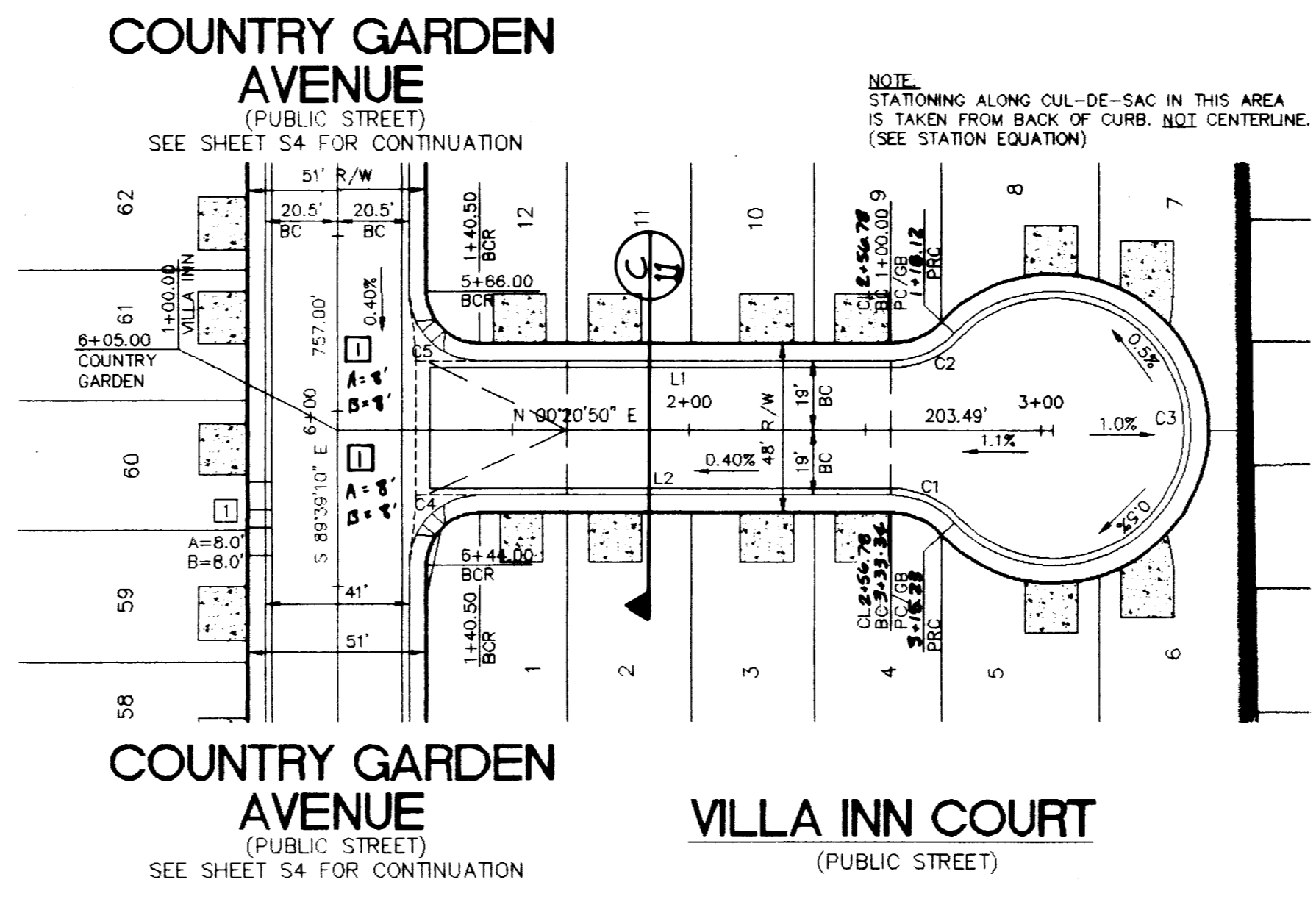
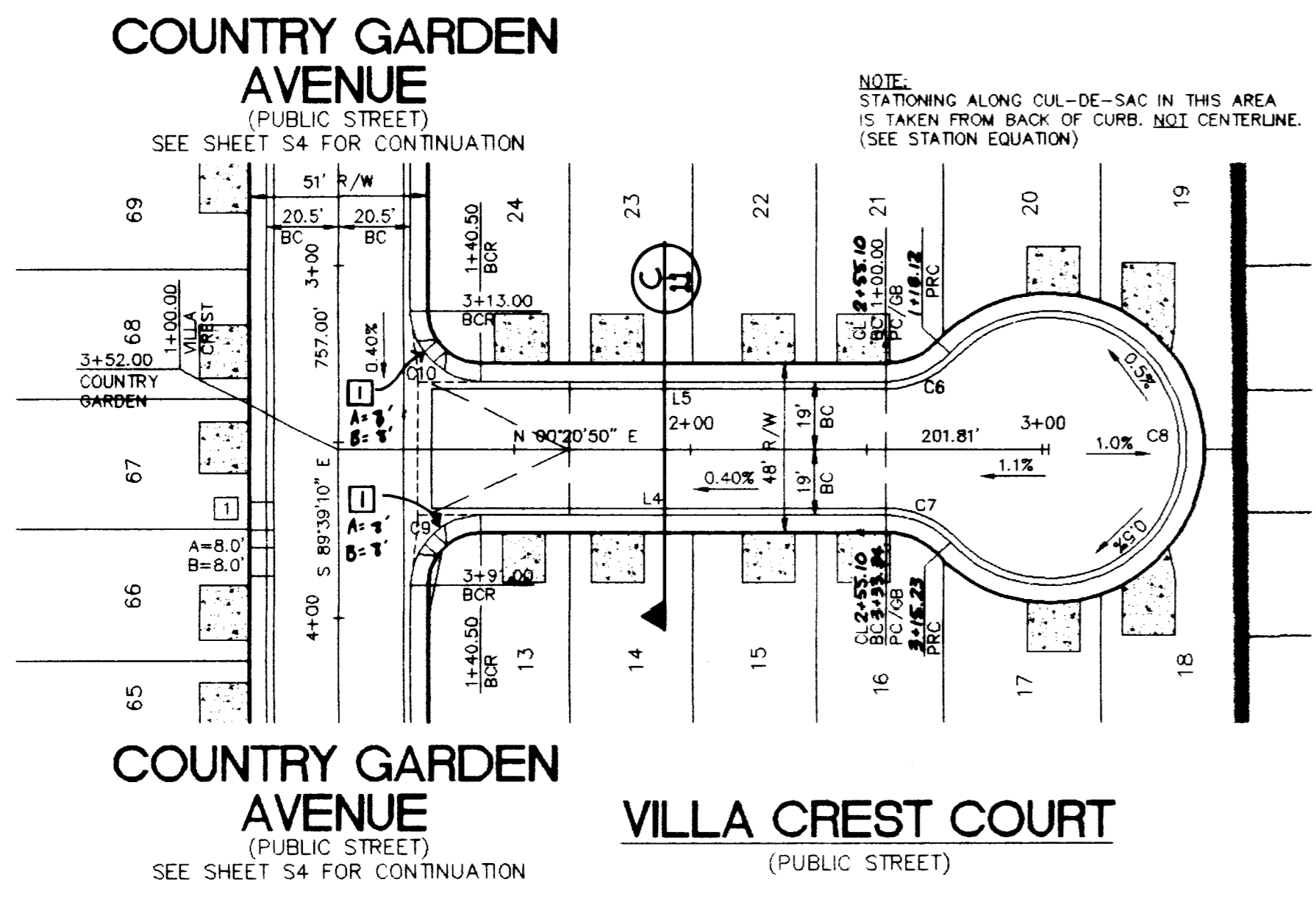
- 1. INSTALL CASE I SIDEWALK RAMP PER CLARK COUNTY AREA STANDARD DRAWING NO. 235.

### DISCLAIMER NOTE

UTILITY LOCATIONS SHOWN HEREON ARE APPROXIMATE ONLY. IT SHALL BE THE CONTRACTOR'S RESPONSIBILITY TO DETERMINE THE EXACT HORIZONTAL AND VERTICAL LOCATION OF ALL EXISTING UNDERGROUND OR OVERHEAD UTILITIES PRIOR TO COMMENCING CONSTRUCTION. NO REPRESENTATION IS MADE THAT ALL EXISTING UTILITIES ARE SHOWN HEREON. THE ENGINEER ASSUMES NO RESPONSIBILITY FOR UTILITIES NOT SHOWN OR UTILITIES NOT SHOWN IN THEIR PROPER LOCATION.

Avoid cutting underground utility lines. It's costly.  
**Call before you Dig**  
1-800-227-2600  
UNDERGROUND SERVICE (USA)

Avoid overhead power line contact.  
**Call before you Overhead**  
1-702-593-6111  
NEVADA POWER TRANSMISSION AND DISTRIBUTION



HELLER DEVELOPMENT COMPANIES  
CALIFORNIA • NEVADA  
8455 Paseo Boulevard  
Northridge, CA 91324 (818) 727-2656

ORION ENGINEERING AND SURVEYING, INC.  
3088 E. SUNSET ROAD, SUITE 9  
LAS VEGAS, NEVADA 89119  
(702) 739-5821 FAX (702) 739-5929

SHEET 05.20.98  
DESIGNED BY: RCP  
CHECKED BY: MAB  
PROJECT NO.: 020-8601  
SCALE: HORIZ. 1" = 40'  
VERT. 1" = 4'

WASHINGTON & SANDHILL - Unit 2

1074-4556-2

