

CITY OF LAS VEGAS FIRE DEPARTMENT NOTES

- ALL WORK SHALL BE DONE IN STRICT ACCORDANCE WITH THE CITY OF LAS VEGAS FIRE DEPARTMENT "HYDRANT SPECIFICATIONS", "HYDRANT INSTALLATION SPECIFICATIONS" AND ORDINANCE #3944.
- AUTHORIZED HYDRANTS FOR THIS PROJECT ARE:
 - KENNEDY GUARDIAN
 - MUELLER CENTURIAN
 - CLOW MODEL 2546 MEDALLION
- ON ANY NEW HOME OR BUILDING INSTALLATION, ACCESSIBLE FIRE HYDRANTS SHALL BE INSTALLED BEFORE COMMENCEMENT OF CONSTRUCTION COMMENCES AND SAID FIRE HYDRANTS SHALL BE IN GOOD WORKING ORDER WITH AN ADEQUATE WATER SUPPLY.
- CONTRACTOR SHALL PLACE A BLUE REFLECTIVE MARKER AT CENTERLINE OF STREET ADJACENT TO FIRE HYDRANT AS REQUIRED IN ORDINANCE #3944 TO IDENTIFY FIRE HYDRANT LOCATIONS.
- CALL THE LAS VEGAS BUILDING DEPARTMENT AT 229-2071 FOR UNDERGROUND INSPECTION, PRESSURE & FLUSH VERIFICATION OF ALL FIRE HYDRANTS & FIRE LINES BEFORE COVERING.
- PAINTING OF THE CURBS AND HYDRANTS AND ANY WORK NECESSARY FOR PROTECTION OF HYDRANTS FROM PHYSICAL DAMAGE PER ORDINANCE #3944 SHALL BE COMPLETED BEFORE APPROVAL BY THE CITY OF LAS VEGAS FIRE DEPARTMENT.
- A PERMIT IS REQUIRED FROM THE FIRE DEPARTMENT FOR ON-SITE WATER LINE AND FIRE HYDRANT. THE PERMIT AND CONTRACTORS MATERIALS AND TEST CERTIFICATE FOR UNDERGROUND PIPING FORM SHALL BE OBTAINED FROM THE FIRE PROTECTION ENGINEER PRIOR TO ANY WORK BEGINNING.
- PRIVATE FIRE HYDRANTS SHALL BE PAINTED RED.
- A FLOW TEST MUST BE WITNESSED BY THE FIRE DEPARTMENT PRIOR TO OCCUPANCY FOR VERIFICATION OF REQUIRED ON-SITE WATER SUPPLY.
- ALL ON-SITE FIRE MAIN MATERIALS MUST BE U.L. LISTED AND A.W.M.A. APPROVED.
- FIRE HYDRANT SPACING:
 - RESIDENTIAL - 500 FEET UNSPRINKLERED, 600 FEET SPRINKLERED;
 - COMMERCIAL, INCLUDING MULTI-FAMILY-300 FEET UNSPRINKLERED, 400 FEET SPRINKLERED.
- WHERE NEW WATER MAINS ARE EXTENDED ALONG STREETS, WHERE HYDRANTS ARE NOT NEEDED FOR PROTECTED STRUCTURES, FIRE HYDRANTS SHALL BE SPACED AT A MAXIMUM 1,000 FOOT SPACING TO PROVIDE FOR TRANSPORTATION HAZARDS.
- NO FIRE HYDRANT SHALL BE LOCATED WITHIN THE REQUIRED RADIUS OF A CUL-DE-SAC OR WITHIN 20 FEET OF THE PERIMETER OF THE RADIUS OF THE CUL-DE-SAC.
- NO FIRE HYDRANT SHALL BE LOCATED WITHIN 6 FEET OF ANY CURB RETURN, DRIVEWAY, POWER POLE, STREET LIGHT OR ANY OTHER OBSTRUCTION.
- TWO SOURCES OF SUPPLY ARE REQUIRED WHERE THERE ARE 4 OR MORE FIRE HYDRANTS INSTALLED ON A SINGLE SYSTEM.
- NO MORE THAN 2 HYDRANTS CAN BE OUT OF SERVICE DUE TO A SINGLE MAIN BREAK.
- FIRE APPARATUS ACCESS ROADS SHALL HAVE AN UNOBSTRUCTED WIDTH OF NOT LESS THAN 20 FEET PROVIDED NO PARKING IS ALLOWED, NOT LESS THAN 28 FEET IS PARALLEL PARKING IS ALLOWED ON ONE SIDE, AND NOT LESS THAN 36 FEET IF PARALLEL PARKING IS ALLOWED OF BOTH SIDES. VERTICAL CLEARANCE SHALL BE NOT LESS THAN 13 FEET 6 INCHES.
- THE TURNING RADIUS FOR ANY FIRE APPARATUS ACCESS ROAD AND/OR FIRE LANE, CUL-DE-SAC OR PRIVATE SHALL BE NOT LESS THAN 45 FEET OUTSIDE RADIUS & 22 FEET INSIDE RADIUS.
- A FIRE APPARATUS ROAD SHALL BE REQUIRED WHEN ANY PORTION OF AN EXTERIOR WALL OF THE FIRST FLOOR IS LOCATED MORE THAN 150 FEET FROM A FIRE DEPARTMENT VEHICLE ACCESS (SEE EXCEPTION IN UFC 88, SECTION 10.207).

CITY OF LAS VEGAS SEWER NOTES

- ALL CONSTRUCTION AND MATERIALS SHALL BE IN ACCORDANCE WITH THE LATEST EDITION OF THE DESIGN AND CONSTRUCTION STANDARDS FOR WASTEWATER COLLECTION SYSTEMS AND THE UNIFORM STANDARD SPECIFICATIONS FOR PUBLIC WORKS' CONSTRUCTION OFF-SITE IMPROVEMENTS, CLARK COUNTY AREA, NEVADA, AS AMENDED. IN ALL CASES, THESE STANDARDS SHALL SUPERSEDE THE UNIFORM STANDARD SPECIFICATIONS. IT WILL BE THE RESPONSIBILITY OF THE CONTRACTOR TO BE AWARE OF THE CONTENTS OF THE ABOVE SPECIFICATION BOOKS.
- IT SHALL BE THE CONTRACTOR'S RESPONSIBILITY TO PERFORM CONSTRUCTION AS PER PLANS. ANY ADDITIONS, DELETIONS, OR CHANGES SHALL FIRST MEET THE APPROVAL OF THE CONTROLLING AGENCY.
- CHISEL "S" OR "G" IN CURBS WHERE SEWER OR GAS LATERALS PASS UNDER THE CURB.
- POLYVINYL (PVC) SEWER PIPE SHALL MEET ASTM D-3034 SR 35 SPECIFICATIONS, INSTALLED WITH SAND BEDDING AND BACKFILL OF TYPE GRAVEL.
- ALL MANHOLES IN PAVED STREETS 80' R/W AND LARGER, SHALL HAVE CONCRETE COLLARS.
- TEE SADDLES SHALL BE USED TO CONNECT SEWER LATERALS TO EXISTING MAIN LINES UP TO 12" DIA. SIZE. CONNECTIONS TO 15" OR LARGER MAINS SHALL REQUIRE SPECIAL PROCEDURES.
- A SEWER MAIN CROSSING OVER A WATER MAIN OR LESS THAN 18" UNDER A WATER MAIN, MUST BE REINFORCED CONCRETE ENCASED FOR A DISTANCE NOT LESS THAN TEN FEET (10') TO EACH SIDE OF THE CENTERLINE OF THE WATER MAIN.
- ALL CONTRACTORS INSTALLING SEWER MAINS THAT WILL BE UNDER THE JURISDICTION OF THE CONTROLLING AGENCY MUST BE CLASS "A" CONTRACTORS.
- THE CITY OF LAS VEGAS WILL NOT ACCEPT ANY SEWER MAINS WHICH HAVE A VERTICAL DEFLECTION OF MORE THAN ONE TENTH (0.1) OF A FOOT FROM THE APPROVED CONSTRUCTION PLANS. SEWER MAINS FOUND TO EXCEED THIS TOLERANCE WILL HAVE TO BE REPAIRED OR REMOVED AND REPLACED TO THE SATISFACTION OF THE CITY ENGINEER PRIOR TO ACCEPTANCE BY THE CITY.

LAS VEGAS VALLEY WATER DISTRICT STANDARD NOTES

- NO WORK SHALL BEGIN UNTIL THE WATER PLANS HAVE BEEN RELEASED FOR CONSTRUCTION BY LVVWD. FOLLOWING WATER PLAN APPROVAL, 48 HOUR NOTICE SHALL BE GIVEN TO THE LVVWD COMMUNICATIONS SUPPORT CENTER (258-7171) PRIOR TO THE START OF CONSTRUCTION. NOTICE MUST BE GIVEN BY 2:00 P.M. THE BUSINESS DAY PRIOR TO AN LVVWD INSPECTION.
- ALL WORK SHALL CONFORM TO LVVWD STANDARD PLATES, DRAWINGS, AND SPECIFICATIONS AND THE UNIFORM DESIGN AND CONSTRUCTION STANDARDS FOR WATER DISTRIBUTION SYSTEMS (UDAS), LATEST EDITION.
- ALL WORK, EXCEPT AS MODIFIED BY THESE PLANS OR BY NOTE 2, SHALL BE DONE IN ACCORDANCE WITH THE MOST CURRENT DRAFT OR EDITION OF THE UNIFORM STANDARD SPECIFICATIONS FOR PUBLIC WORKS' CONSTRUCTION OFF-SITE IMPROVEMENTS, CLARK COUNTY AREA.
- A SINGLE PIPE MATERIAL SHALL BE USED THROUGHOUT THE PROJECT UNLESS OTHERWISE APPROVED BY THE LVVWD.
- ALL SERVICE LATERALS TWO (2) INCHES IN DIAMETER AND SMALLER SHALL BE COPPER TUBING WITH LVVWD APPROVED SERVICE SADDLES.
- ALL WATER METER BOXES SHALL BE LOCATED OUTSIDE OF DRIVEWAY AREAS.
- ALL VALVES SHALL BE LOCATED OUTSIDE OF DRIVEWAYS, VALLEY AND CURB GUTTERS.
- THE FOLLOWING REQUIREMENTS MUST BE MET IN THE EVENT OF A WATERLINE AND SANITARY OR STORM SEWER LINE CROSS:
 - A MINIMUM EIGHTEEN (18) INCH VERTICAL SEPARATION (OUTSIDE TO OUTSIDE) MUST BE MAINTAINED WHEN THE WATER LINE IS INSTALLED OVER THE SANITARY OR STORM SEWER LINE. IF THE VERTICAL SEPARATION CANNOT BE MAINTAINED OR THE WATER LINE MUST BE PLACED UNDER THE SANITARY OR STORM SEWER LINE, THE SANITARY OR STORM SEWER LINE MUST BE CONSTRUCTED WITH ONE OF THE FOLLOWING OR, AS SHOWN ON THESE PLANS:
 - POTABLE WATER SUPPLY QUALITY MATERIAL
 - EASEMENT, WITH FOUR (4) INCH CONCRETE (MINIMUM) C. SLEEVING WITH POTABLE WATER SUPPLY QUALITY PIPE
 - EACH PROVISION MUST EXTEND ALONG THE SANITARY OR STORM SEWER, ON EITHER SIDE OF THE MAIN, A MINIMUM 10 FOOT DISTANCE PERPENDICULAR TO THE WATER MAIN EXTERIOR.
- WARNING TAPE SHALL BE REQUIRED OVER ALL MAINS, ALL SIX (6) INCH DIAMETER AND LARGER SERVICE LATERALS, AND ANY SERVICE LATERAL NOT INSTALLED PERPENDICULAR TO THE MAIN IN ACCORDANCE WITH STANDARD PLATE NO. 27.
- ALL WATER FACILITIES SHALL BE FILLED, DISINFECTED, PRESSURE TESTED, FLUSHED, FILLED AND AN ACCEPTABLE WATER SAMPLE OBTAINED, PRIOR TO CONNECTION TO THE LVVWD DISTRIBUTION SYSTEM.
- THE CONTRACTOR MUST OBTAIN ALL METERS TWO (2) INCHES AND SMALLER FROM THE LVVWD CENTRAL STORES. TELEPHONE 258-3152 FORTY-EIGHT (48) HOURS PRIOR TO PICKUP.
- CONSTRUCTION MUST INTERRUPT SERVICE, WITH LVVWD APPROVAL AND PROPER NOTIFICATION BETWEEN THE HOURS OF 6 P.M. AND 6 A.M., SUNDAY THROUGH THURSDAY. CIRCUMSTANCES MAY REQUIRE TEMPORARY SERVICE FEES BE INSTALLED, WITHOUT LVVWD REIMBURSEMENT. ANY TEMPORARY SERVICE FEE MUST HAVE PRIOR LVVWD APPROVAL.
- ALL WATER FACILITY CONSTRUCTION MATERIALS USED MUST BE AS LISTED ON THE LVVWD'S PRE-APPROVED MATERIALS AND MANUFACTURERS LISTING FOR NEW FACILITIES, LATEST REVISION, OR SPECIFICALLY APPROVED ON THESE PLANS.

STREET LIGHT NOTE

ALL STREET LIGHTING INSTALLATION EXCEPT AS NOTED ON THE STREET LIGHTING PLANS SHALL CONFORM TO THE IMPROVEMENT STANDARDS, DEPARTMENT OF PUBLIC WORKS, CLARK COUNTY, NEVADA, AND THE UNIFORM STANDARD SPECIFICATIONS FOR PUBLIC WORKS' CONSTRUCTION, OFF-SITE IMPROVEMENTS, CLARK COUNTY AREA, NEVADA.

UTILITY NOTE

UTILITY LOCATIONS SHOWN HEREON ARE APPROXIMATE ONLY. IT SHALL BE THE CONTRACTOR'S RESPONSIBILITY TO DETERMINE THE EXACT VERTICAL AND HORIZONTAL LOCATION OF ALL EXISTING UNDERGROUND UTILITIES PRIOR TO COMMENCING CONSTRUCTION. NO REPRESENTATION IS MADE THAT ALL EXISTING UTILITIES ARE SHOWN HEREON. THE ENGINEER ASSUMES NO RESPONSIBILITY FOR UTILITIES NOT SHOWN OR UTILITIES NOT SHOWN IN THEIR PROPER LOCATION. CALL BEFORE YOU DIG: 1-800-227-2600.

FIRE FLOW CALCULATIONS:

FIRE FLOW REQUIREMENT IS: 1,625 GALLONS PER MINUTE AT 20 PSI RESIDUAL PRESSURE.

BASED ON:

SQUARE FOOTAGE:	15,120 SQUARE FEET
LARGEST AREA BETWEEN 4-HOUR AREA SEPARATION WALLS:	N/A SQUARE FEET
BUILDING HEIGHT:	27 FEET
NUMBER OF STORIES:	1 FLOOR
TYPE OF CONSTRUCTION:	V NON-RATED
OCCUPANCY:	COMMERCIAL
FULL AUTOMATIC FIRE SPRINKLER SYSTEM:	YES

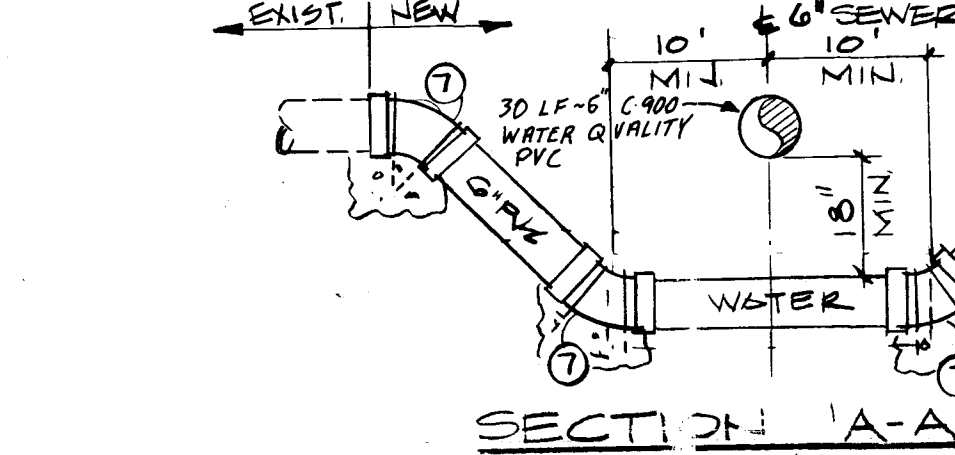
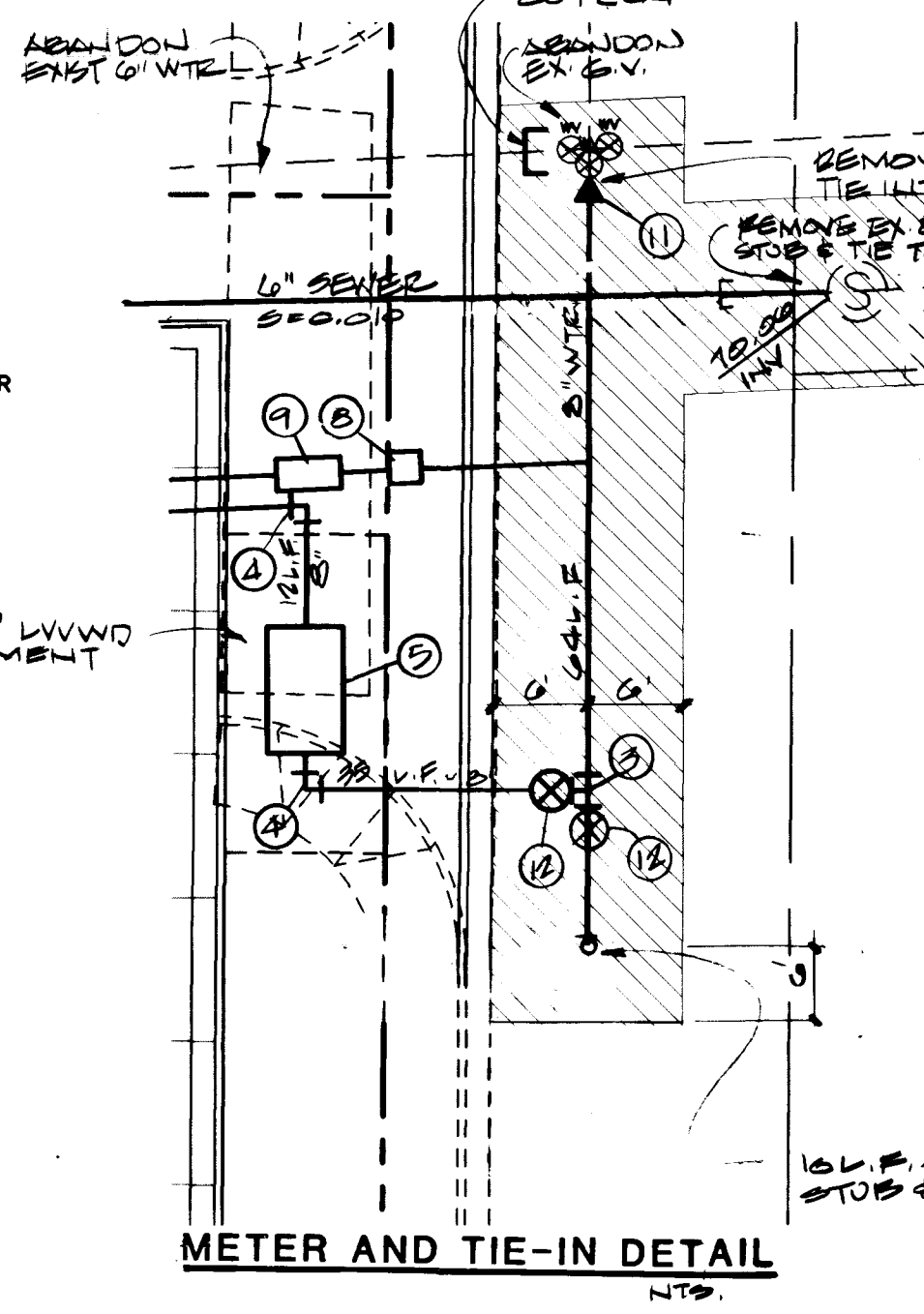
REVIEWED BY: DATE: _____

APPROVALS

Juanita Rodriguez 10-10-96 DATE
NEVADA POWER COMPANY
THIS APPROVAL IS ONLY FOR THE PLACEMENT AND CLEARANCE OF STREET LIGHTS AND SIGNAL LIGHT INSTALLATIONS.

[Signature] 3/18/97 DATE
LAS VEGAS VALLEY WATER DISTRICT

[Signature] 10/16/96 DATE
CITY OF LAS VEGAS FIRE DEPARTMENT



BASIS OF BEARING

NORTH 00°44'48" EAST BEING THE CENTERLINE OF LAMB BOULEVARD AND THE WEST LINE OF THE SOUTHWEST QUARTER (SW 1/4) OF SECTION 29, TOWNSHIP 20 SOUTH, RANGE 62 EAST, M.D.M. AS SHOWN IN FILE 63 OF SURVEYS, PAGE 16, RECORDED JUNE 12, 1992, OFFICIAL RECORDS OF CLARK COUNTY, NEVADA.

BENCH MARK

CLV BM #21402 29555
RIVET AND PLATE IN TOP OF CURB NE RETURN LAMB BLVD. AND BONANZA ROAD.
NAVD88 1775.419 FEET (541.1489 METERS)

LEGAL DESCRIPTION

A PORTION OF THE SOUTHWEST QUARTER (SW 1/4) OF THE SOUTHWEST QUARTER (SW 1/4) OF SECTION 29, TOWNSHIP 20 SOUTH, RANGE 62 EAST M.D.M. CITY OF LAS VEGAS, CLARK COUNTY, NEVADA.

GRAPHIC SCALE



OWNER/DEVELOPER

VILLAGE BUILDERS LP
562 MISSION ST., SUITE 201
SAN FRANCISCO, CA 94105-2906
PHONE (415) 546-9373
FAX (415) 546-0569

WATER QUANTITIES:

1	12"X12"X6" WET TAPPING TEE & VALVE	1 EA
2	6" 90° BEND	1 EA
3	6" 45° BEND	2 EA
4	6" DCCA	1 EA
5	6" X45° BEND	4 EA
6	6" FIRE HYDRANT ASSEMBLY (STD. DWG. #136)	1 EA
7	1" WATER METER	1 EA
8	RPPA	1 EA
9	1" X 1/2" REDUCER	1 EA
10	6" X8" REDUCER	1 EA
11	6" GATE VALVE	1 EA
12	8" PVC WATER	187 LF
	6" PVC WATER	121 LF
	1 1/4" WATER	269 LF

SEWER QUANTITIES:

6" PVC SEWER	PUBLIC	281 LF
4" CLEAN-OUT	PRIVATE	4 EA
6" CONSTRUCT 2 DIA. X 1/2" THICK COLLECTOR CULVERT AT C.O.		5 EA

SEWER CONTRIBUTION

AVERAGE DAY COMMERCIAL USAGE
1750 GAL./AC. DAY x .75 x 8.72 ACRES = 11445 GAL./DAY

RETAIL USAGE
800 GAL./AC. DAY x .25 x 8.72 ACRES = 1744 GAL./DAY

TOTAL = 13189 GAL./DAY

PEAK DAY
PEAKDAY = 3.5 PEAK FACTOR X 13,189 GAL./DAY = 46,167 GAL./DAY

PROJECT NAME: *Walgreens @ Bonanza Rd & Lamb Blvd*
This project water plan complies with the Las Vegas Valley Water District's technical requirements. However, this water plan is NOT APPROVED FOR CONSTRUCTION at this time and this signature does not provide or imply a water commitment.

[Signature] DATE: 10/16/96

CALL BEFORE YOU DIG
CALL 1-800-227-2600

CALL BEFORE YOU DIG
CALL 1-800-227-2600

CALL BEFORE YOU DIG
CALL 1-800-227-2600

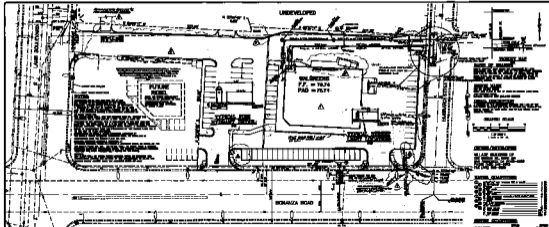
STANDAGE & TRUITT ENGINEERING, LTD.
CIVIL ENGINEERING AND SURVEYING
6855 W. CHARLESTON BOULEVARD
LAS VEGAS, NEVADA 89117
PHONE: (702) 255-2950
FAX: (702) 255-3090

UTILITY PLAN
WALGREENS @ BONANZA RD. & LAMB BLVD.

JOB NO.: 960415.03
FILE: 6415UT3
DESIGNER: PS
DRAWN BY: ANR
CHECKED BY: BR
DATE: 9/27/96

PROJECT ENGINEER: MICHAEL J. CREHAN
CIVIL ENGINEER
10/16/96

SHEET NO. 3 OF 3



LANDSCAPE & ARCHITECTURE, INC.
 1000 W. 10TH AVENUE
 DENVER, CO 80202
 TEL: 333-1111
 FAX: 333-1111

UTILITY PLAN
 BUILDINGS @
 BORGATA RD. & LAMB BLVD.

DATE: 10/1/01
 SHEET NO. 3 OF 3



DATE: 10/1/01
 SHEET NO. 3 OF 3

NOTES:

1. ALL UTILITIES TO BE SHOWN AS SHOWN ON THIS PLAN.
2. ALL UTILITIES TO BE DELETED OR CHANGED TO BE SHOWN ON THIS PLAN.
3. ALL UTILITIES TO BE ADDED TO BE SHOWN ON THIS PLAN.
4. ALL UTILITIES TO BE MAINTAINED TO BE SHOWN ON THIS PLAN.
5. ALL UTILITIES TO BE RELOCATED TO BE SHOWN ON THIS PLAN.
6. ALL UTILITIES TO BE DELETED TO BE SHOWN ON THIS PLAN.
7. ALL UTILITIES TO BE ADDED TO BE SHOWN ON THIS PLAN.
8. ALL UTILITIES TO BE MAINTAINED TO BE SHOWN ON THIS PLAN.
9. ALL UTILITIES TO BE RELOCATED TO BE SHOWN ON THIS PLAN.
10. ALL UTILITIES TO BE DELETED TO BE SHOWN ON THIS PLAN.

NOTES:

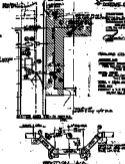
1. ALL UTILITIES TO BE SHOWN AS SHOWN ON THIS PLAN.
2. ALL UTILITIES TO BE DELETED OR CHANGED TO BE SHOWN ON THIS PLAN.
3. ALL UTILITIES TO BE ADDED TO BE SHOWN ON THIS PLAN.
4. ALL UTILITIES TO BE MAINTAINED TO BE SHOWN ON THIS PLAN.
5. ALL UTILITIES TO BE RELOCATED TO BE SHOWN ON THIS PLAN.
6. ALL UTILITIES TO BE DELETED TO BE SHOWN ON THIS PLAN.
7. ALL UTILITIES TO BE ADDED TO BE SHOWN ON THIS PLAN.
8. ALL UTILITIES TO BE MAINTAINED TO BE SHOWN ON THIS PLAN.
9. ALL UTILITIES TO BE RELOCATED TO BE SHOWN ON THIS PLAN.
10. ALL UTILITIES TO BE DELETED TO BE SHOWN ON THIS PLAN.

NOTES:

1. ALL UTILITIES TO BE SHOWN AS SHOWN ON THIS PLAN.
2. ALL UTILITIES TO BE DELETED OR CHANGED TO BE SHOWN ON THIS PLAN.
3. ALL UTILITIES TO BE ADDED TO BE SHOWN ON THIS PLAN.
4. ALL UTILITIES TO BE MAINTAINED TO BE SHOWN ON THIS PLAN.
5. ALL UTILITIES TO BE RELOCATED TO BE SHOWN ON THIS PLAN.
6. ALL UTILITIES TO BE DELETED TO BE SHOWN ON THIS PLAN.
7. ALL UTILITIES TO BE ADDED TO BE SHOWN ON THIS PLAN.
8. ALL UTILITIES TO BE MAINTAINED TO BE SHOWN ON THIS PLAN.
9. ALL UTILITIES TO BE RELOCATED TO BE SHOWN ON THIS PLAN.
10. ALL UTILITIES TO BE DELETED TO BE SHOWN ON THIS PLAN.

NOTES:

1. ALL UTILITIES TO BE SHOWN AS SHOWN ON THIS PLAN.
2. ALL UTILITIES TO BE DELETED OR CHANGED TO BE SHOWN ON THIS PLAN.
3. ALL UTILITIES TO BE ADDED TO BE SHOWN ON THIS PLAN.
4. ALL UTILITIES TO BE MAINTAINED TO BE SHOWN ON THIS PLAN.
5. ALL UTILITIES TO BE RELOCATED TO BE SHOWN ON THIS PLAN.
6. ALL UTILITIES TO BE DELETED TO BE SHOWN ON THIS PLAN.
7. ALL UTILITIES TO BE ADDED TO BE SHOWN ON THIS PLAN.
8. ALL UTILITIES TO BE MAINTAINED TO BE SHOWN ON THIS PLAN.
9. ALL UTILITIES TO BE RELOCATED TO BE SHOWN ON THIS PLAN.
10. ALL UTILITIES TO BE DELETED TO BE SHOWN ON THIS PLAN.



NOTES:

1. ALL UTILITIES TO BE SHOWN AS SHOWN ON THIS PLAN.
2. ALL UTILITIES TO BE DELETED OR CHANGED TO BE SHOWN ON THIS PLAN.
3. ALL UTILITIES TO BE ADDED TO BE SHOWN ON THIS PLAN.
4. ALL UTILITIES TO BE MAINTAINED TO BE SHOWN ON THIS PLAN.
5. ALL UTILITIES TO BE RELOCATED TO BE SHOWN ON THIS PLAN.
6. ALL UTILITIES TO BE DELETED TO BE SHOWN ON THIS PLAN.
7. ALL UTILITIES TO BE ADDED TO BE SHOWN ON THIS PLAN.
8. ALL UTILITIES TO BE MAINTAINED TO BE SHOWN ON THIS PLAN.
9. ALL UTILITIES TO BE RELOCATED TO BE SHOWN ON THIS PLAN.
10. ALL UTILITIES TO BE DELETED TO BE SHOWN ON THIS PLAN.