

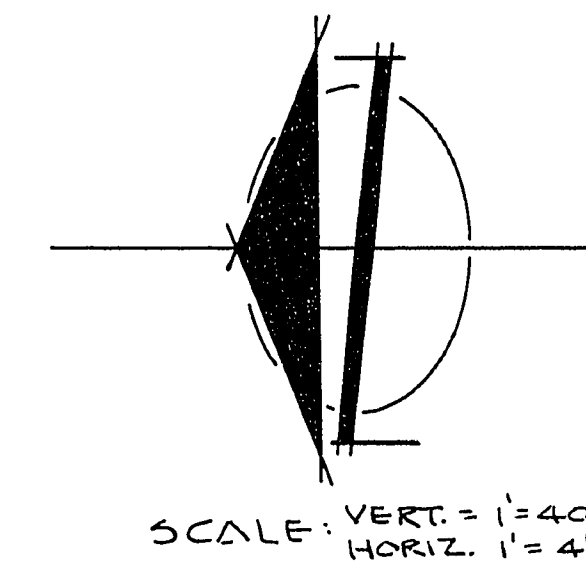
NO	Δ	B.C. RAD.	L	T
1	88°17'05"	30.00'	46.23'	29.12'
2	142°00'12"	63.00'	163.54'	200.96'
3	91°06'16"	30.00'	47.70'	30.58'
4	91°42'05"	30.00'	48.02'	30.91'
5	26°31'31"	30.00'	13.89'	7.07'

UTILITY NOTE

The location of underground utilities shown hereon has been determined from surface evidence of their existence or from information obtained from the utility companies. The Engineer accepts no liability for the existence or non-existence of utility lines. Contractors and others using this map must confirm the location of underground lines or structures with the utility companies prior to commencing any excavation. CALL BEFORE YOU DIG 1-800-227-2600

STREET LIGHT NOTE

All street lighting installation shall conform to the latest issue of the Standard Details and Specifications of the City of Las Vegas, and shall also conform to the Uniform Standard Specifications for Public Works Construction of Off-site Improvements, Clark County Area, 1978, unless otherwise noted. THIS PROJECT REQUIRES A SERVICE POINT PROVIDED BY CONTRACTOR AT LOCATION SHOWN



CONSTRUCTION NOTES

- All construction shall conform to the latest revised Uniform Standard Specifications and Drawings for Public Works Construction for Clark County Area, Nevada.
- Compliance with air pollution controls & regulations will be required at all times.
- Exact locations of all sawcut lines shall be determined in the field by a City of Las Vegas Inspector.
- All construction and materials shall be in accordance with the "Uniform Standard Specifications for Public Works Construction Off-Site Improvements, Clark County Area Nevada", issued 1978; the "Uniform Standard Drawings for Public Works Construction, Clark County Area"; any other applicable approved standards issued by the controlling agency; the Uniform Building Code; and all Local City Codes and Ordinances applicable.

NOTE - 1

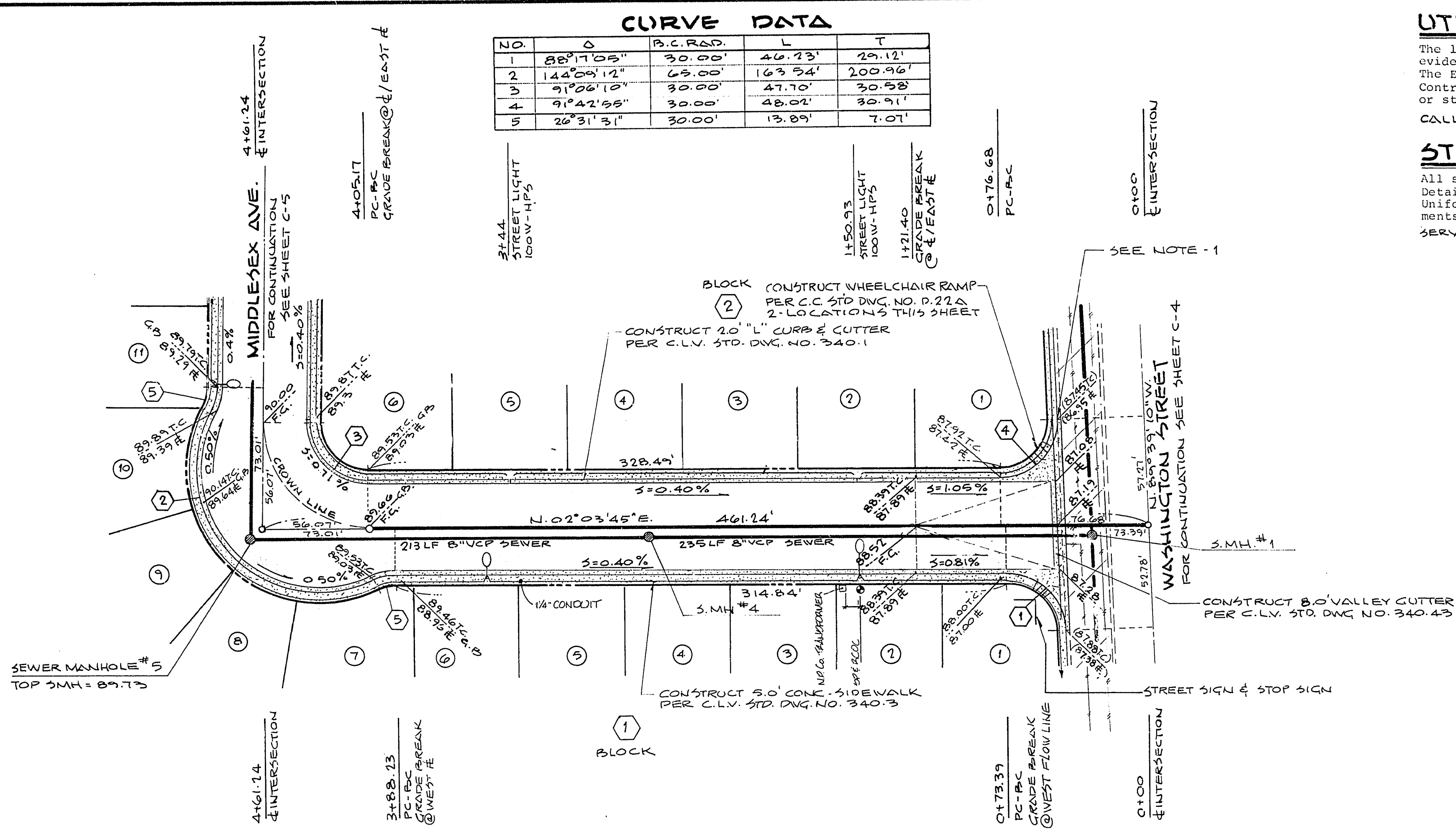
IT IS THE CONTRACTORS OPTION TO EITHER SAWCUT AT THE P.C. OF THE CURVE (BEGINNING) END OF VALLEY CUTTER OR REMOVE AND REPLACE "L" CURB & CUTTER FROM THE NEAREST CONSTRUCTION JOINT AS REQUIRED.

BENCH MARK

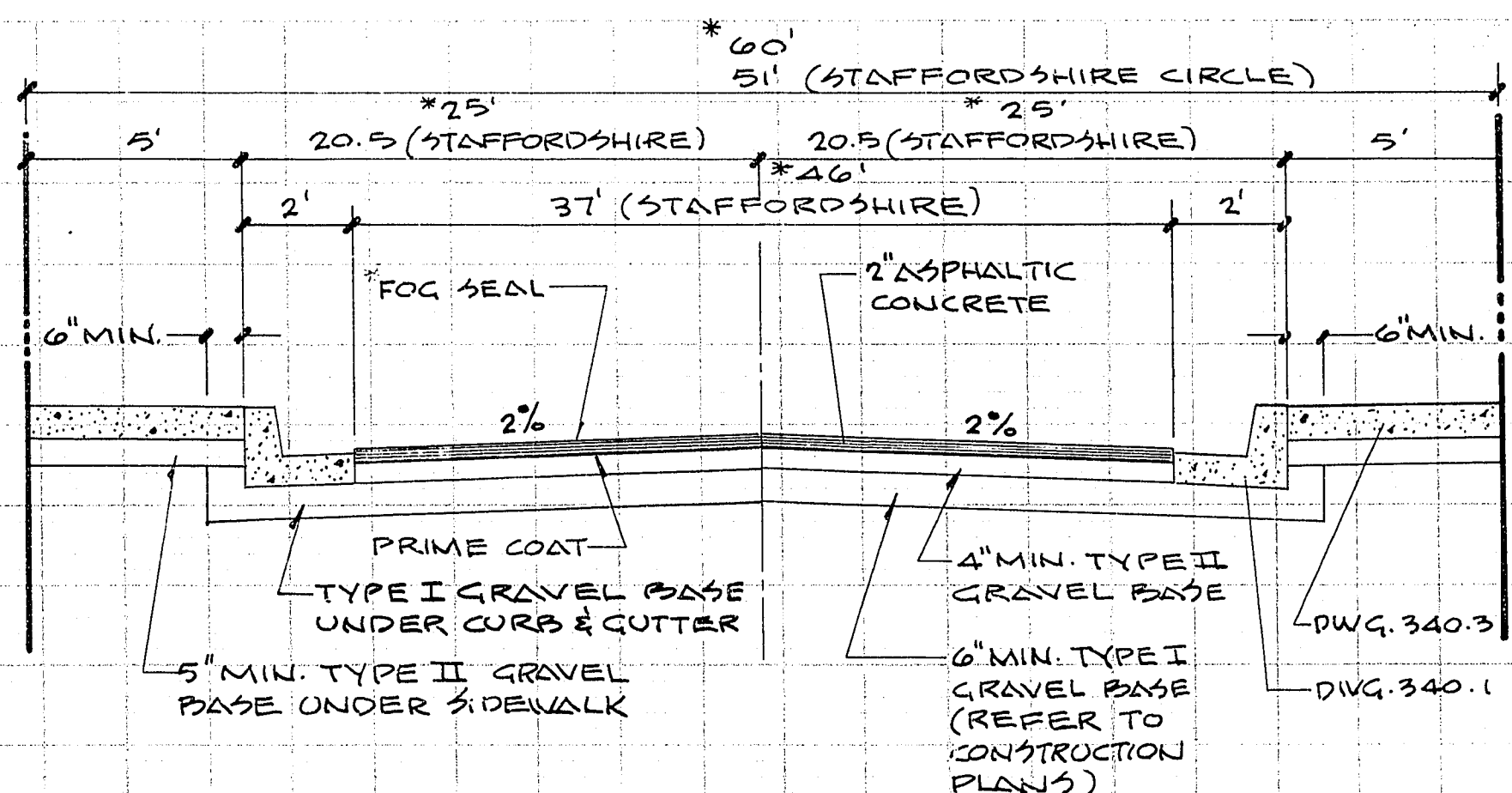
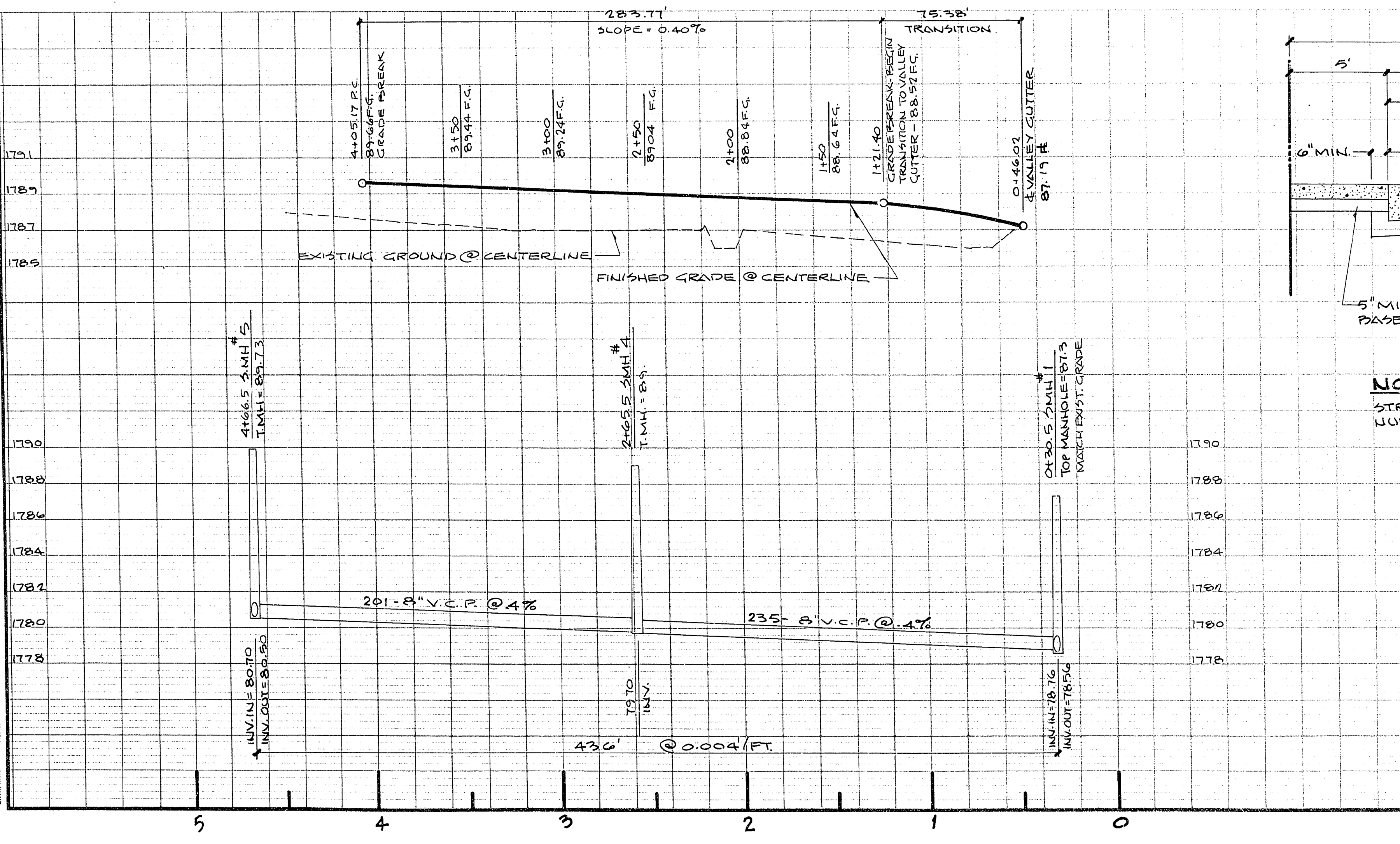
B.M. 0013001 - C.L.V. BOLT & PLATE IN TOP OF CURB ON THE NW CORNER OF WASHINGTON & LAMB. ELEVATION = 1783.39

LEGEND

- PROPERTY LINE
- STREET CENTERLINE
- EXISTING A.C. PAVEMENT
- NEW A.C. PAVEMENT
- SAWCUT LINE
- LOT LINE
- LOT NUMBER
- CURVE DATA
- BLOCK NUMBER
- EXISTING GRADE
- DESIGN GRADE



BRIDGEWATER STREET



NOTE: STREET SECTION TO CONFORM TO C.L.V. STANDARD DRAWING NUMBERS 5 & 6.0.

TYPICAL STREET SECTION

(FOR BRIDGEWATER ST, MIDDLESEX AVE, & HARBOR AVE. ONLY)

NOTE: APPLY FOG SEAL ONLY AFTER ALL CORRECTIONS AND ADJUSTMENTS HAVE BEEN MADE.

APPROVALS

- C.L.V. SUPERVISOR
- C.L.V. ELECTRICAL COORDINATOR
- C.L.V. QUALITY CONTROL ENGINEER
- C.L.V. SANITATION ENGINEER
- C.L.V. TRAFFIC ENGINEER
- C.L.V. FIRE MARSHALL
- C.L.V. CITY ENGINEER
- NEVADA POWER COMPANY

THE NOVA GROUP

DATE: FEBRUARY 1982 PREPARED FOR: DESIGN: CAS/ANNA DRAWN: L.T.T. CHECK: C.W.A. SCALE: VERT. 1"=40' HORIZ. 1"=4'

BAUGHMAN & TURNER MINING ENGINEERS LAND SURVEYORS 3235 WEST CHARLESTON BOULEVARD LAS VEGAS, NEVADA 89102 702-732-8771

STREET, ST. LIGHT & SEWER DESIGN SECTION: BRIDGEWATER STREET CITY OF LAS VEGAS NEVADA

SHEET NO. 3 PROJ. NO.

1-9-70 1072-3215