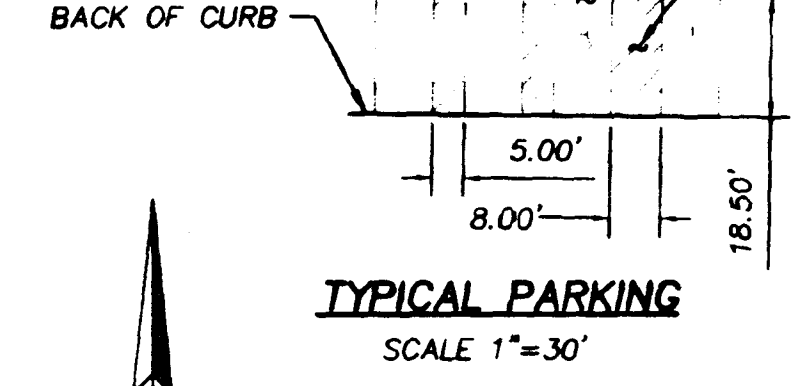
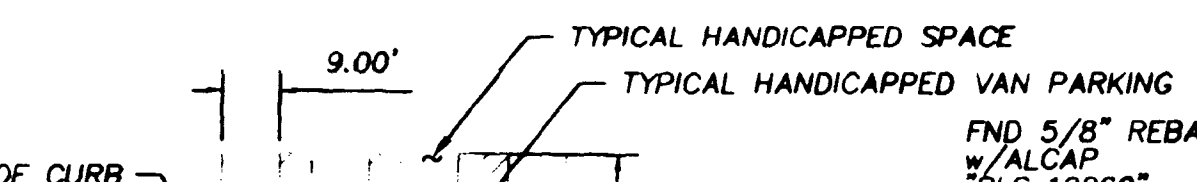
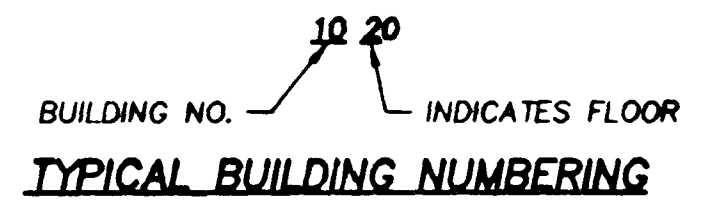


# FINAL MAP OF VEGAS STAR CONDOMINIUMS

## A CONDOMINIUM AND COMMON INTEREST COMMUNITY

BEING A SUBDIVISION OF PARCEL 2 OF MAP RECORDED IN FILE 94 OF PARCEL MAPS AT PAGE 08 THEREOF, CLARK COUNTY RECORDS, LOCATED IN SECTION 30, T20S, R62E, M.D.M., CITY OF LAS VEGAS, COUNTY OF CLARK, STATE OF NEVADA.

- LEGEND**
- MONUMENT FOUND AS NOTED
  - SET 5/8" REBAR w/ALCAP PLS 12069"
  - CENTERLINE
  - SETBACK LINE
  - BUILDING ENVELOPE
  - BUILDING TIE
  - PARCEL BOUNDARY
  - ADJACENT LOT LINE
  - SECTION LINE
  - AREA OF INGRESS, EGRESS EASEMENT (SEE SHEET 2)
  - PRIVATE SEWER, ACCESS AND DRAINAGE EASEMENT
  - P.U.E. PUBLIC UTILITY EASEMENT
  - P.D.E. PUBLIC DRAINAGE EASEMENT
  - SF INDICATES SQUARE FOOTAGE
  - PM 94/08 PARCEL MAP FILE/PAGE
  - T INDICATES TRASH ENCLOSURE
  - ⓪ INDICATES BUILDING NUMBER
  - ST INDICATES STREET
  - AVE INDICATES AVENUE



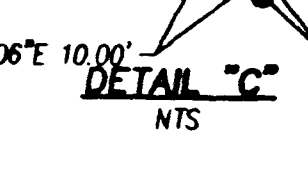
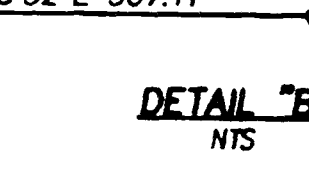
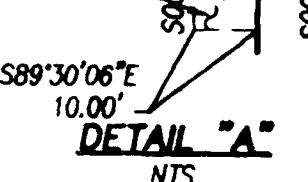
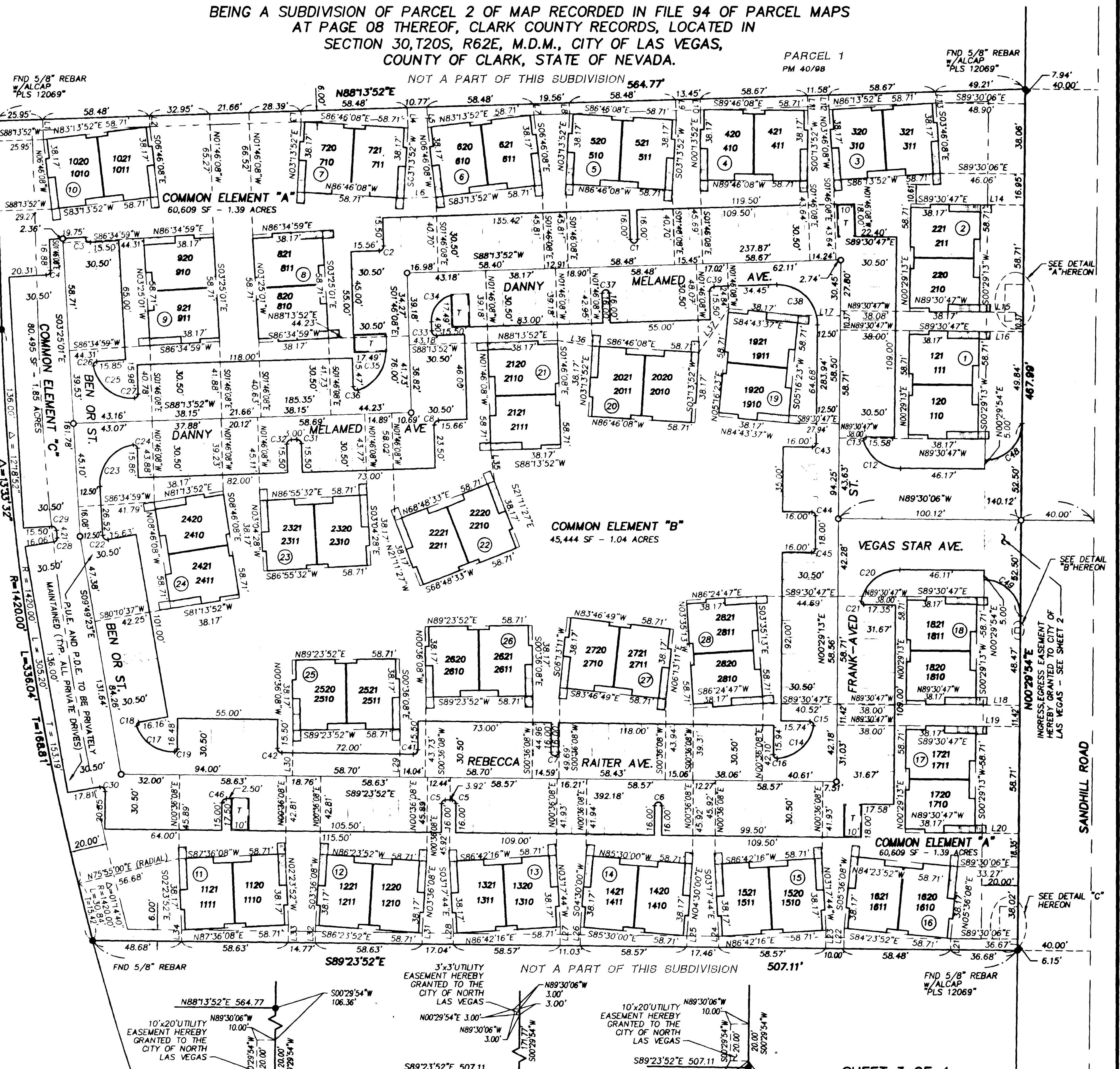
CURVE DATA TABLE

CURVE	DELTA	RADIUS	LENGTH	TANGENT
C1	180°00'00"	2.00	6.28	2.50
C2	90°00'00"	2.50	3.93	2.50
C3	101°32'13"	2.50	4.43	3.06
C4	88°21'07"	2.50	3.86	2.43
C5	90°00'00"	2.00	3.14	2.00
C6	180°00'00"	2.00	6.28	2.50
C7	180°00'00"	2.00	6.28	2.50
C8	90°00'00"	2.50	3.93	2.50
C9	---	---	---	---
C10	---	---	---	---
C11	---	---	---	---
C12	72°03'40"	21.50	27.04	15.64
C13	107°55'39"	1.50	2.83	2.06
C14	76°19'10"	21.50	28.64	16.89
C15	99°21'37"	2.00	3.47	2.36
C16	94°26'08"	2.00	3.30	2.16
C17	71°18'44"	21.50	26.76	15.42
C18	100°33'39"	1.50	2.63	1.81
C19	87°42'06"	1.50	2.30	1.44
C20	79°48'02"	21.50	29.94	17.98
C21	100°12'39"	1.50	2.62	1.79
C22	96°27'10"	2.50	4.21	2.80
C23	84°52'34"	21.50	31.85	19.66
C24	96°46'19"	2.00	3.38	2.25
C25	83°33'54"	21.50	31.36	19.21
C26	97°10'39"	2.00	3.39	2.27
C27	87°36'13"	2.00	3.06	1.92
C28	83°35'38"	2.00	2.92	1.79
C29	90°00'00"	2.50	3.93	2.50
C30	100°25'31"	2.50	4.38	3.00
C31	90°00'00"	2.50	3.93	2.50
C32	90°00'00"	2.50	3.93	2.50
C33	90°00'00"	2.50	3.93	2.50
C34	76°15'55"	14.50	19.30	11.38
C35	74°09'36"	21.50	27.83	16.25
C36	104°51'53"	2.00	3.66	2.60
C37	180°00'00"	2.00	6.28	2.50
C38	92°15'21"	21.50	34.62	22.36
C39	90°00'00"	2.50	3.93	2.50
C40	---	---	---	---
C41	90°00'00"	2.50	3.93	2.50
C42	90°00'00"	2.50	3.93	2.50
C43	90°00'00"	2.00	3.14	2.00
C44	90°00'00"	2.00	3.14	2.00
C45	90°00'00"	2.00	3.14	2.00
C46	90°00'00"	2.50	3.93	2.50
C47	---	---	---	---
C48	90°00'00"	20.00	31.42	20.00
C49	90°00'00"	20.00	31.42	20.00
C56	180°00'00"	2.50	7.85	---
C57	180°00'00"	2.50	7.85	---
C58	180°00'00"	2.50	7.85	---
C59	180°00'00"	2.50	7.85	---

LINE DATA TABLE

LINE	DIRECTION	DISTANCE
L1	N01°46'08"W	11.12'
L2	N01°46'08"W	6.00'
L3	N01°46'08"W	6.00'
L4	N01°46'08"W	11.12'
L5	N01°46'08"W	11.12'
L6	N88°12'26"E	17.50'
L7	N01°46'08"W	6.00'
L8	N01°46'08"W	6.00'
L9	N01°46'08"W	11.12'
L10	N01°46'08"W	6.00'
L11	N01°46'08"W	8.05'
L12	N01°46'08"W	8.05'
L13	N01°46'08"W	6.00'
L14	S89°30'06"E	23.91'
L15	S89°30'06"E	23.89'
L16	S89°30'06"E	23.97'
L17	S89°30'47"E	22.83'
L18	S89°30'06"E	23.93'
L19	S89°30'06"E	23.93'
L20	S89°30'06"E	23.92'
L21	S00°36'08"W	6.08'
L22	S00°36'08"W	11.21'
L23	S00°36'08"W	9.99'
L24	S00°36'08"W	6.00'
L25	S00°36'08"W	6.00'
L26	S00°36'08"W	9.99'
L27	S00°36'08"W	9.99'
L28	S00°36'08"W	6.00'
L29	S00°36'08"W	26.20'
L30	S00°36'08"W	24.97'
L31	S00°36'08"W	6.00'
L32	S00°36'08"W	9.07'
L33	S00°36'08"W	9.07'
L34	S00°36'08"W	6.00'
L35	N06°54'28"W	16.68'
L36	S80°29'18"E	19.27'
L37	N34°42'33"E	29.03'
L47	S89°30'47"E	22.32'
L48	N89°30'47"E	22.32'
L49	S89°30'47"E	28.57'
L50	N89°30'47"W	28.57'

NOTE: ALL ON-SITE SEWERS ARE PRIVATELY OWNED AND MAINTAINED.  
NO. OF UNITS = 112



SHEET 3 OF 4

**AGRA Infrastructure, Inc.**  
ENGINEERING GLOBAL SOLUTIONS

