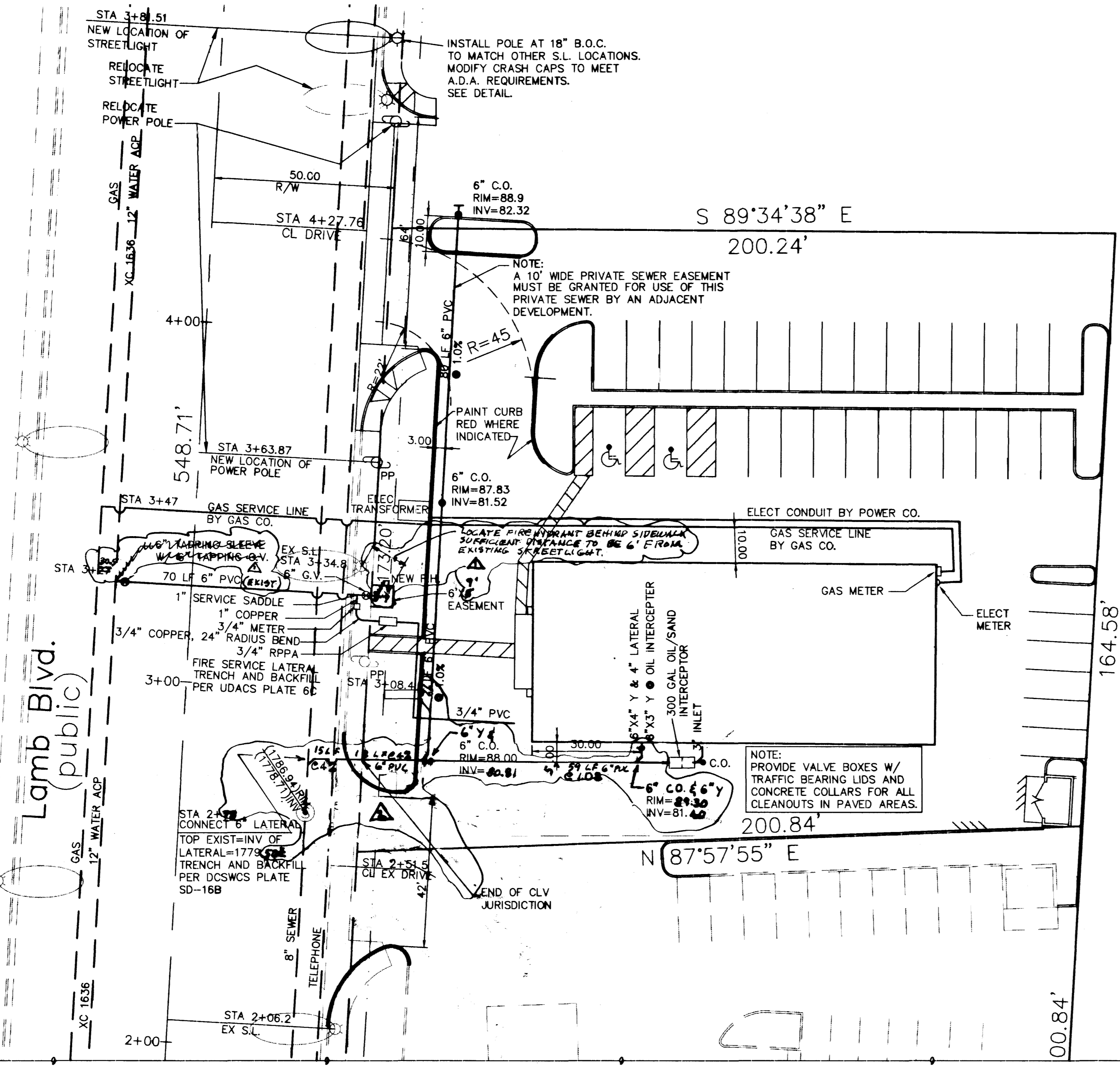


**LAS VEGAS VALLEY WATER DISTRICT STANDARD NOTES**

1. NO WORK SHALL BEGIN UNTIL THE WATER PLANS HAVE BEEN RELEASED FOR CONSTRUCTION BY THE LVVWD. FOLLOWING WATER PLAN APPROVAL, 48 HOUR NOTICE SHALL BE GIVEN TO THE LVVWD COMMUNICATIONS SUPPORT CENTER (258-7171) PRIOR TO THE START OF CONSTRUCTION. NOTICE MUST BE GIVEN BY 2:00 PM THE BUSINESS DAY PRIOR TO A LVVWD INSPECTION.
2. ALL WORK SHALL CONFORM TO LVVWD'S STANDARD PLATES, DRAWINGS, AND SPECIFICATIONS AND THE UNIFORM DESIGN AND CONSTRUCTION STANDARDS FOR WATER DISTRIBUTION SYSTEMS (UDACS), LATEST EDITION.
3. ALL WORK, EXCEPT AS MODIFIED BY THESE PLANS OR BY NOTE 2, SHALL BE DONE IN ACCORDANCE WITH THE MOST CURRENT DRAFT OR EDITION OF THE UNIFORM STANDARD SPECIFICATIONS FOR PUBLIC WORKS CONSTRUCTION OFFSITE IMPROVEMENT, CLARK COUNTY AREA.
4. A SINGLE PIPE MATERIAL SHALL BE USED THROUGHOUT THE PROJECT UNLESS OTHERWISE APPROVED BY THE LVVWD.
5. ALL SERVICE LATERALS TWO (2) INCHES IN DIAMETER AND SMALLER SHALL BE COPPER TUBING WITH LVVWD APPROVED SERVICE SADDLES.
6. ALL WATER METER BOXES SHALL BE LOCATED OUTSIDE OF DRIVEWAY AREAS.
7. ALL VALVES SHALL BE LOCATED OUTSIDE OF DRIVEWAYS, VALLEY AND CURB GUTTERS.
8. THE FOLLOWING REQUIREMENTS MUST BE MET IN THE EVENT A WATER LINE AND SANITARY OR STORM SEWER LINE CROSS:
  - A. A MINIMUM EIGHTEEN (18) INCH VERTICAL SEPARATION (OUTSIDE TO OUTSIDE) MUST BE MAINTAINED WHEN THE WATER LINE IS INSTALLED OVER THE SANITARY OR STORM SEWER LINE. IF THE VERTICAL SEPARATION CANNOT BE MAINTAINED OR THE WATER LINE MUST BE PLACED UNDER THE SANITARY OR STORM SEWER LINE, THE SANITARY OR STORM SEWER LINE MUST BE CONSTRUCTED WITH ONE OF THE FOLLOWING OR, AS SHOWN ON THESE PLANS:
    - A. POTABLE WATER SUPPLY QUALITY MATERIAL.
    - B. ENCASUREMENT WITH FOUR (4) INCH CONCRETE (MINIMUM) SLEEVING WITH POTABLE WATER SUPPLY QUALITY PIPE.
  - C. EACH PROVISION MUST EXTEND ALONG THE SANITARY OR STORM SEWER, ON EITHER SIDE OF THE MAIN, A MINIMUM 10 FOOT DISTANCE PERPENDICULAR TO THE WATER MAIN EXTERIOR.
9. WARNING TAPE SHALL BE REQUIRED OVER ALL MAINS, ALL SIX (6) INCH DIAMETER AND LARGER SERVICE LATERALS, AND ANY SERVICE LATERAL NOT INSTALLED PERPENDICULAR TO THE MAIN IN ACCORDANCE WITH STANDARD PLATE NO. 27.
10. ALL WATER FACILITIES SHALL BE FILLED, DISINFECTED, PRESSURE TESTED, FLUSHED, FILLED AND AN ACCEPTABLE WATER SAMPLE OBTAINED, PRIOR TO CONNECTION TO THE LVVWD'S DISTRIBUTION SYSTEM.
11. THE CONTRACTOR MUST OBTAIN ALL METERS TWO (2) INCHES AND SMALLER FROM LVVWD CENTRAL STORES. TELEPHONE 258-3152 FORTY-EIGHT (48) HOURS PRIOR TO PICKUP.
12. CONSTRUCTION MAY INTERRUPT SERVICE, WITH LVVWD APPROVAL AND PROPER NOTIFICATION, BETWEEN THE HOURS OF 10 PM AND 6 AM, SUNDAY THROUGH THURSDAY. CIRCUMSTANCES MAY REQUIRE TEMPORARY SERVICE FEEDS TO BE INSTALLED, WITHOUT LVVWD REIMBURSEMENT. ANY TEMPORARY SERVICE FEED MUST HAVE PRIOR LVVWD APPROVAL.
13. ALL WATER FACILITY CONSTRUCTION MATERIALS USED MUST BE AS LISTED ON THE LVVWD'S PRE-APPROVED MATERIALS AND MANUFACTURERS LISTING FOR NEW FACILITIES, LATEST REVISION, OR SPECIFICALLY APPROVED ON THESE PLANS.



**SEWER CONTRIBUTION**

0.00133 MGD AVE  
0.00452 MGD PEAK  
BASED UPON 0.76 ACRES COMMERCIAL

**SEWER QUANTITIES**

- PRIVATE**
- 252 LF 6" PVC
  - 1 6" 45° BEND
  - 2 6"X6" Y
  - 4 6" C.O.
  - 1 6"X4" Y
  - 1 6"X3" Y
  - 1 6" CAP
  - 1 300 GAL OIL SEPARATER
- PUBLIC**
- 15 LF 6" PVC

**WATER QUANTITIES**

- PUBLIC**
- 1 6" TAPPING SLEEVE
  - 1 6" TAPPING GATE VALVE
  - 70 LF 6" PVC FIRE LATERAL
  - 1 FIRE HYDRANT
  - 1 1" SERVICE SADDLE
  - 1 1" COPPER LATERAL
  - 1 3/4" METER
- PRIVATE**
- 1 3/4" RPPA
  - 58 LF 3/4" PVC

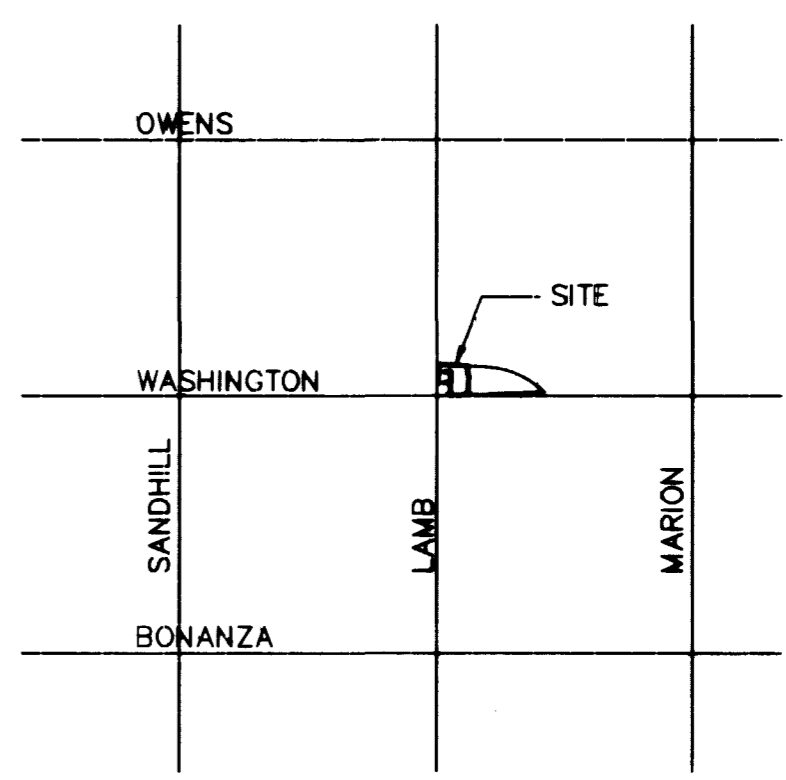
**FIRE FLOW CALCULATIONS**

FIRE FLOW REQUIREMENT = 2000 GPM  
AT 20 PSI RESIDUAL PRESSURE.

BASED ON:

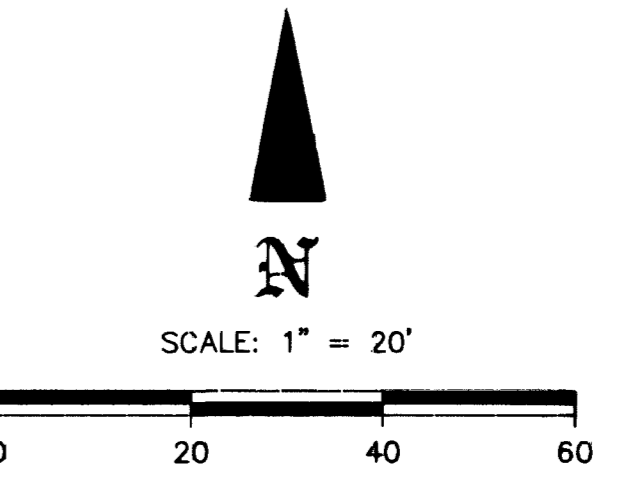
- SQUARE FOOTAGE = 5575 SQ.FT.
- LARGEST AREA BETWEEN 4-HOUR AREA SEPARATION WALLS = 5575 SQ.FT.
- BUILDING HEIGHT = 16 FT.
- NUMBER OF STORIES = 1 FLOORS
- TYPE OF CONSTRUCTION = V-N
- OCCUPANCY = M
- FULL AUTOMATIC FIRE SPRINKLER SYSTEM = NONE
- FIRE HYDRANTS REQUIRED = 2
- FIRE HYDRANTS PROVIDED = 1 EXISTING 1 NEW

REVIEWED BY: *[Signature]* 10-7-98



**VICINITY MAP**

NO SCALE



<p>CALL BEFORE YOU DIG</p> <p>Call before you Dig- 1-800-227-2600</p> <p>UNDERGROUND SERVICE ALERT (USA)</p>	<p>CALL BEFORE YOU OVERHEAD</p> <p>Call before you OVERHEAD 1-702-593-6111</p> <p>NEVADA POWER ENVIRONMENT AND SAFETY SERVICES DEPARTMENT</p>
--	---

THIS PROPERTY MAY HAVE STATIC WATER PRESSURE IN EXCESS OF 80 PSI. THE UNIFORM PLUMBING CODE REQUIRES THAT INDIVIDUAL ON-SITE (PRIVATE), PRESSURE REDUCING VALVES BE INSTALLED WHENEVER THE PRESSURE EXCEEDS 80 PSI. PRIVS ARE THE DEVELOPER'S RESPONSIBILITY AND WILL NOT BE INSPECTED OR INCLUDED IN THE ACCEPTANCE OF LVVWD FACILITIES.

**REDUCED PRESSURE PRINCIPLE ASSEMBLY**

APPROVED REDUCED PRESSURE PRINCIPLE ASSEMBLY(S) SHALL BE INSTALLED PER THE UDACS PLATE NO. 11A OR 11B. NO WATER SHALL BE TAKEN FROM A SERVICE REQUIRING BACKFLOW PREVENTION UNTIL THE REDUCED PRESSURE PRINCIPLE ASSEMBLY HAS BEEN SUCCESSFULLY TESTED BY THE LVVWD.

ANY BLOCK WALL OR OTHER FENCE MATERIAL SHALL BE DESIGNED AND CONSTRUCTED AROUND THE OUTSIDE OF THE EASEMENT(S) TO ALLOW THE DISTRICT DIRECT ACCESS FROM THE ADJACENT RIGHT-OF-WAY.

**FIRE HYDRANT INSTALLATION**

FIRE HYDRANT(S) TO BE INSTALLED IN ACCORDANCE WITH THE UDACS STANDARD PLATE NO. 7.

**PROJECT NAME: ULTIMATONE**

54487 C3  
This project water plan complies with the Las Vegas Valley Water District's technical requirements. However, this water plan is **NOT APPROVED FOR CONSTRUCTION** at this time and this signature does not provide or imply a water commitment.

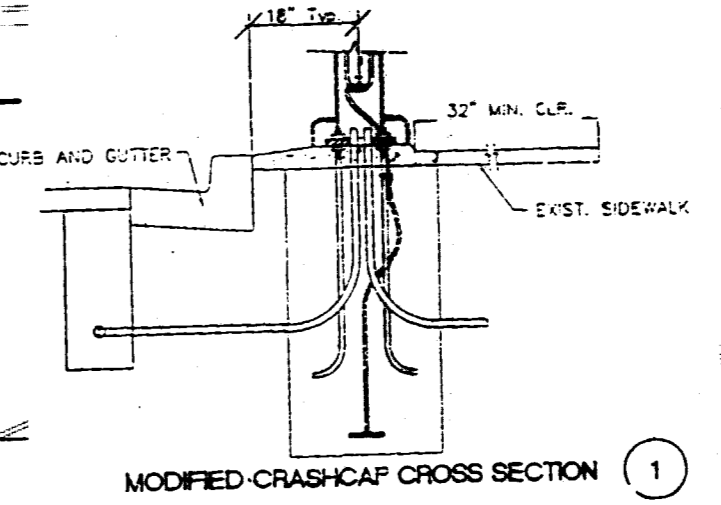
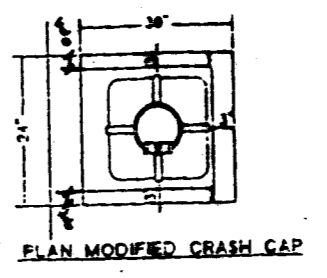
*[Signature]* 10-07-98  
LVVWD DATE

*[Signature]* 10-7-98  
CLV FIRE DEPARTMENT DATE

*[Signature]* 12/02/98  
LAS VEGAS VALLEY WATER DISTRICT DATE

*[Signature]* 10-7-98  
NEVADA POWER CO. DATE

*[Signature]* 10-8-98  
SOUTHWEST GAS DATE



<p>SAIM RANA 3230 E. FLAMINGO RD. LAS VEGAS, NV 89121</p>	<p>AFLECK ENTERPRISES 4887 IDAHO AVE. LAS VEGAS, NEVADA 89104 431-4827</p>
<p>UTILITY PLAN</p>	<p>ULTIMATE LAMB BLVD. AND WASHINGTON AVE. CITY OF LAS VEGAS, NEVADA</p>
<p>DATE: 6/26/98</p>	<p>DATE: 6/26/98</p>
<p>DATE: 6/26/98</p>	<p>DATE: 6/26/98</p>
<p>DATE: 10-7-98</p>	<p>DATE: 10-7-98</p>
<p>DATE: 10-7-98</p>	<p>DATE: 10-7-98</p>
<p>DATE: 10-8-98</p>	<p>DATE: 10-8-98</p>
<p>PROJECT NO: 97139</p>	<p>SCALE: 1" = 20' HOR.</p>
<p>SHEET C3</p>	<p>DRAWING NO. 107-V2933</p>

