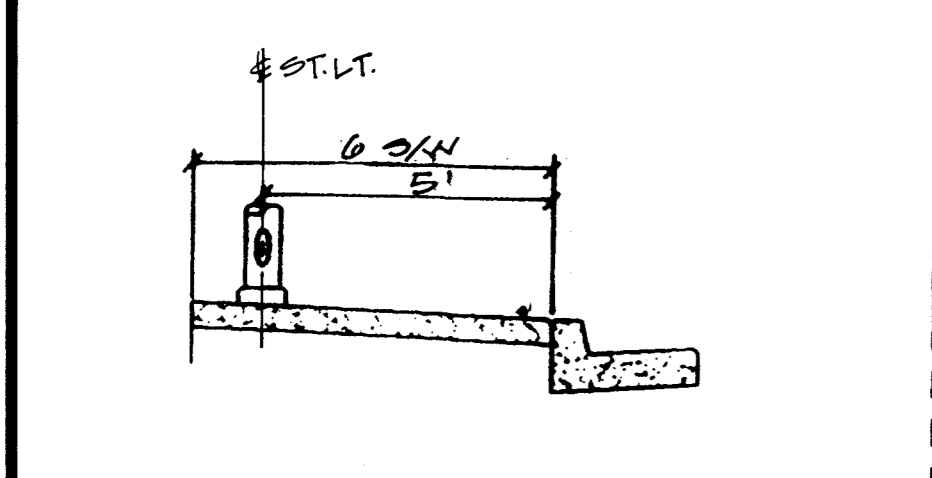


TYPICAL FIRE HYDRANT DETAIL



TYPICAL STREET LIGHT LOCATION

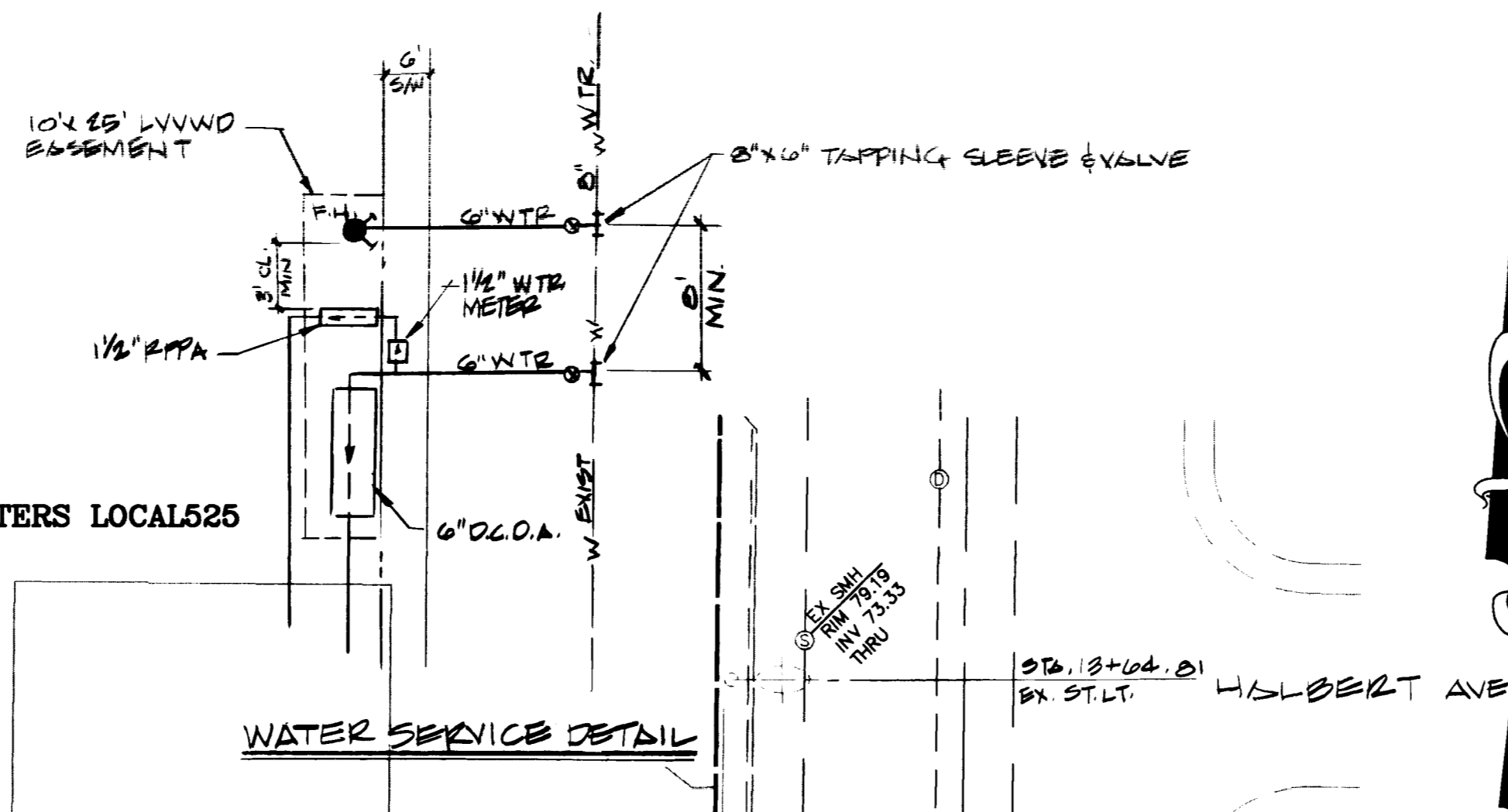
INSTALLATION OF DOUBLE CHECK DETECTOR ASSEMBLY
 The double check detector assemblies shall be installed in accordance with the UDACS Plate 208.
 Any block wall or other fence material shall be designed and constructed around the outside of the easement(s), so as to allow the District direct access from the adjacent right-of-way.

REDUCED PRESSURE PRINCIPLE ASSEMBLY
 Approved Reduced Pressure Principle Assembly(s) shall be installed per the UDACS Plate No. 11A. No water shall be taken from a service requiring backflow prevention until the reduced pressure principle assembly has been successfully tested by the LVVWD.
 Any block wall or other fence material shall be designed and constructed around the outside of the easement(s) to allow the District direct access from the adjacent right-of-way.

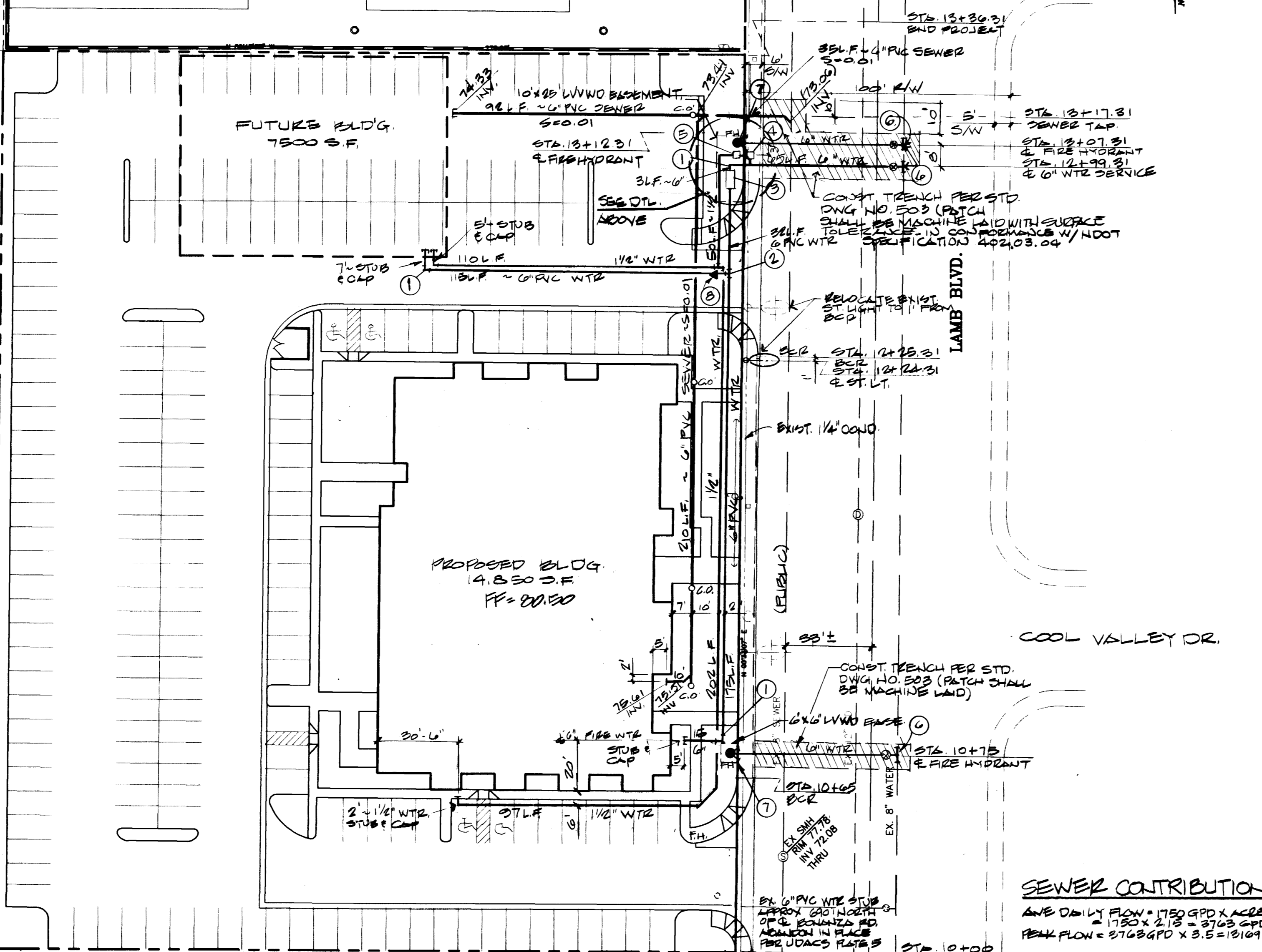
ABANDONED VALVE CUT AND CAP
 All valves to be abandoned in the closed position, unless shown otherwise, by removing a minimum of the top 12 inches of the valve box and then filling the remaining portion of the valve box with concrete having a compressive strength of at least 2,000 psi.
 The Contractor shall cut the existing pipe 3' + beyond the abandoned valve and install a cap. Where a joint or coupling in the existing pipe is uncovered at the cut and cap location, the installation of a plug may be permitted with District approval. The Contractor shall install a concrete thrust block in accordance with the provisions of the UDACS Plate No. 5 at all cap or plug locations.

This property may have static water pressure in excess of 80 psi. The Uniform Plumbing Code requires that individual, on-site (private), pressure reducing valves be installed whenever the pressure exceeds 80 psi. PRVs are the Developer's responsibility and will not be inspected or included in the acceptance of LVVWD facilities.

PLUMBERS & PIPEFITTERS LOCAL 525



WATER SERVICE DETAIL



WATER QUANTITIES

1	1\"/>
---	-------

SEWER QUANTITIES

1	1\"/>
---	-------

EXISTING UTILITY NOTE

EXISTING UTILITY LOCATIONS SHOWN HEREON ARE APPROXIMATE ONLY. IT SHALL BE THE CONTRACTOR'S RESPONSIBILITY TO DETERMINE THE EXACT VERTICAL AND HORIZONTAL LOCATION OF ALL EXISTING UNDERGROUND UTILITIES PRIOR TO COMMENCING CONSTRUCTION. NO REPRESENTATION IS MADE THAT ALL EXISTING UTILITIES ARE SHOWN HEREON. THE ENGINEER ASSUMES NO RESPONSIBILITY FOR UTILITIES NOT SHOWN OF UTILITIES NOT SHOWN IN THEIR PROPER LOCATION. CALL BEFORE YOU DIG: 1-800-227-2600.

CITY OF LAS VEGAS STREET LIGHT NOTE

ALL STREET LIGHT INSTALLATIONS SHALL CONFORM TO THE LATEST ISSUE OF THE STANDARD DETAIL, AND SPECIFICATIONS OF THE CITY OF LAS VEGAS, AND SHALL ALSO CONFORM TO THE UNIFORM STANDARD SPECIFICATIONS FOR PUBLIC WORKS CONSTRUCTION OF OFF-SITE IMPROVEMENTS, CLARK COUNTY AREA, LATEST EDITION, UNLESS OTHERWISE NOTED. ALL HAND HOLE COVERS MUST BE INSTALLED, POLE CAPS REQUIRED AND PULL BOX LIDS BOLTED DOWN PRIOR TO ENERGIZING CIRCUIT. ALL WIRE MUST HAVE THW INSULATIONS.

CITY OF LAS VEGAS FIRE DEPARTMENT NOTES

- ALL WORK SHALL BE DONE IN STRICT ACCORDANCE WITH THE CITY OF LAS VEGAS FIRE DEPARTMENT "HYDRANT SPECIFICATIONS", "HYDRANT INSTALLATION SPECIFICATIONS" AND ORDINANCE #3944.
- AUTHORIZED HYDRANTS FOR THIS PROJECT ARE:
 A. KENNEDY GUARDIAN
 B. MUELLER A-423 CENTURIAN
 C. CLOW MODEL 2545 MEDALLION
- ON ANY NEW HOME OR BUILDING INSTALLATION, ACCESSIBLE FIRE HYDRANTS SHALL BE INSTALLED BEFORE COMBUSTIBLE CONSTRUCTION COMMENCES AND SAID FIRE HYDRANTS SHALL BE IN GOOD WORKING ORDER WITH AN ADEQUATE WATER SUPPLY.
- CONTRACTOR SHALL PLACE A BLUE REFLECTIVE MARKER AT CENTERLINE OF STREET ADJACENT TO FIRE HYDRANT AS REQUIRED IN ORDINANCE #3944 TO IDENTIFY FIRE HYDRANT LOCATIONS.
- CALL THE LAS VEGAS BUILDING DEPARTMENT AT 229-2071 FOR UNDERGROUND INSPECTION, PRESSURE & FLUSH VERIFICATION OF ALL FIRE HYDRANTS & FIRE LINES BEFORE COVERING.
- PAINTING OF THE CURBS AND HYDRANTS AND ANY WORK NECESSARY FOR PROTECTION OF HYDRANTS FROM PHYSICAL DAMAGE PER ORDINANCE #3944 SHALL BE COMPLETED BEFORE APPROVAL BY THE CITY OF LAS VEGAS FIRE DEPARTMENT.
- A PERMIT IS REQUIRED FROM THE FIRE DEPARTMENT FOR ON-SITE WATER LINE AND FIRE HYDRANT. THE PERMIT AND CONTRACTORS MATERIALS AND TEST CERTIFICATE FOR UNDERGROUND PIPING FORM SHALL BE OBTAINED FROM THE FIRE PROTECTION ENGINEER BEFORE ANY WORK BEGINNING.
- PRIVATE FIRE HYDRANTS SHALL BE PAINTED RED.
- A FLOW TEST MUST BE WITNESSED BY THE FIRE DEPARTMENT PRIOR TO OCCUPANCY FOR VERIFICATION OF REQUIRED ON-SITE WATER SUPPLY.
- ALL ON-SITE FIRE MAIN MATERIALS MUST BE U.L. LISTED AND A.W.W.A. APPROVED.
- FIRE HYDRANT SPACING:
 RESIDENTIAL - 300 FEET UNSPRINKLERED, 600 FEET SPRINKLERED;
 COMMERCIAL, INCLUDING MULTI-FAMILY-300 FEET UNSPRINKLERED, 600 FEET SPRINKLERED.
- WHERE NEW WATER MAINS ARE EXTENDED ALONG STREETS, WHERE HYDRANTS ARE NOT NEEDED FOR PROTECTION OF STRUCTURES, FIRE HYDRANTS SHALL BE SPACED AT A MAXIMUM 1,000 FOOT SPACING TO PROVIDE FOR TRANSPORTATION HAZARDS.
- NO FIRE HYDRANT SHALL BE LOCATED WITHIN THE REQUIRED RADIUS OF A CUL-DE-SAC OR WITHIN 20 FEET OF THE PERIMETER OF THE RADIUS OF THE CUL-DE-SAC.
- NO FIRE HYDRANT SHALL BE LOCATED WITHIN 6 FEET OF ANY CURB RETURN, DRIVEWAY, POWER POLE, STREET LIGHT OR ANY OTHER OBSTRUCTION.
- TWO SOURCES OF SUPPLY ARE REQUIRED WHEREVER THERE ARE 4 OR MORE FIRE HYDRANTS INSTALLED ON A SINGLE SYSTEM.
- NO MORE THAN 2 HYDRANTS CAN BE OUT OF SERVICE DUE TO A SINGLE MAIN BREAK.
- FIRE APPARATUS ACCESS ROADS SHALL HAVE AN UNOBSTRUCTED WIDTH OF NOT LESS THAN 20 FEET PROVIDED NO PARKING IS ALLOWED, NOT LESS THAN 28 FEET IS PARALLEL PARKING IS ALLOWED ON ONE SIDE, AND NOT LESS THAN 36 FEET IF PARALLEL PARKING IS ALLOWED OF BOTH SIDES VERTICAL CLEARANCE SHALL BE NOT LESS THAN 13 FEET 6 INCHES.
- THE TURNING RADIUS FOR ANY FIRE APPARATUS ACCESS ROAD AND/OR FIRE LANE, PUBLIC OR PRIVATE SHALL BE NOT LESS THAN 45 FEET OUTSIDE RADIUS & 22 FEET INSIDE RADIUS.
- A FIRE APPARATUS ROAD SHALL BE REQUIRED WHEN ANY PORTION OF AN EXTERIOR WALL OF THE FIRST STORY IS LOCATED MORE THAN 150 FEET FROM A FIRE DEPARTMENT VEHICLE ACCESS (SEE EXCEPTION IN UPC 88, SECTION 10.207).
- ALL DEAD END FIRE APPARATUS ACCESS ROADS AND/OR FIRE LANES PUBLIC OR PRIVATE IN EXCESS OF 150 FEET IN LENGTH SHALL BE PROVIDED WITH AN APPROVED TURN AROUND AREA. SEE ORDINANCE #3944.
- ACCESS ROADS SHALL BE MARKED BY PLACING APPROVED SIGNS AT THE START OF THE DESIGNATED FIRE LANE. ONE SIGN AT THE END OF THE FIRE LANE AND WITH SIGNS AT INTERVALS OF 100 FEET ALONG ALL DESIGNATED FIRE LANES. SIGNS TO BE PLACED ON BOTH SIDES OF AN ACCESS ROADWAY IF NEEDED TO PREVENT PARKING ON EITHER SIDE. SIGNS TO BE INSTALLED NO HIGHER THAN 10 FEET OR LESS THAN 6 FEET FROM ROADWAY LEVEL. THE CURBS ALONG OR ON THE PAVEMENT OR CEMENT IF CURB IS NOT PRESENT, SHALL BE PAINTED WITH RED WEATHER RESISTANT PAINT IN ADDITION TO THE SIGNS.
- ELECTRICALLY CONTROLLED ACCESS GATES SHALL BE PROVIDED WITH AN APPROVED EMERGENCY VEHICLE DETECTOR/RECEIVER SYSTEM. SAID SYSTEM SHALL BE INSTALLED IN ACCORDANCE WITH THE CITY OF LAS VEGAS GUIDELINES FOR AUTOMATIC EMERGENCY VEHICLE ACCESS GATES.

FIRE FLOW CALCULATIONS

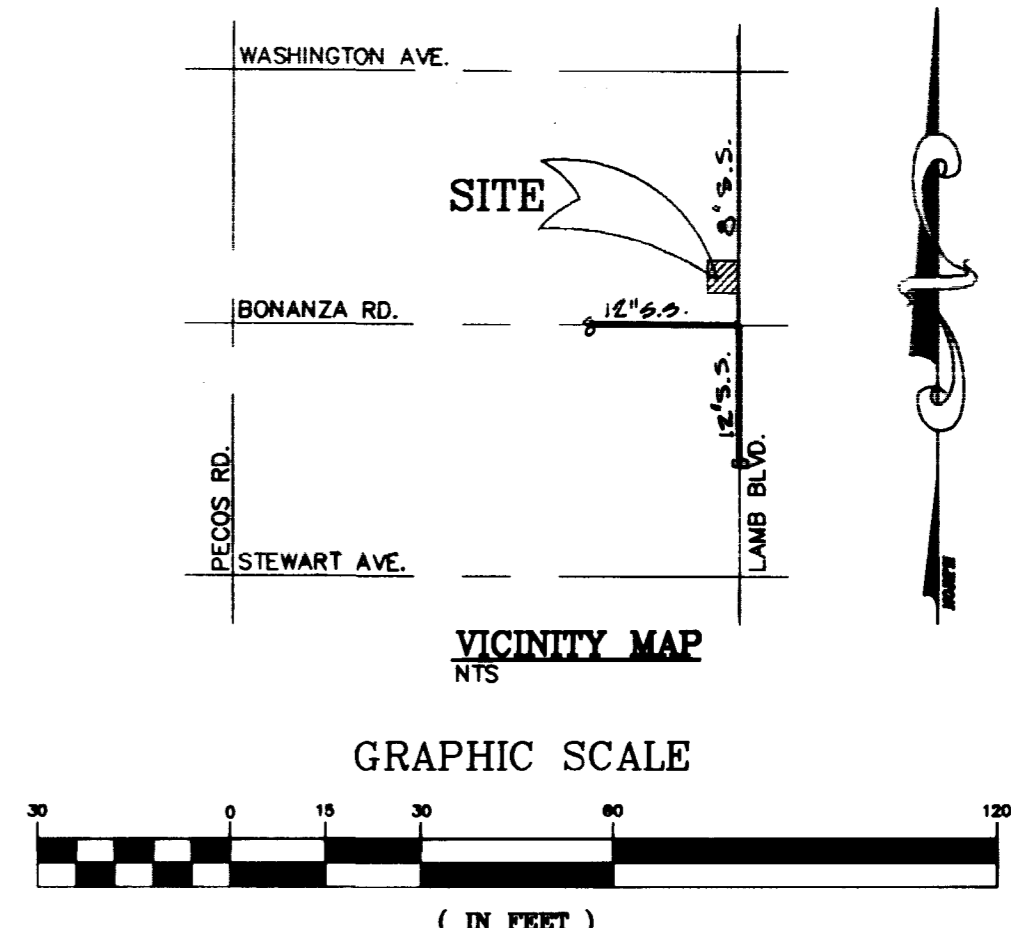
FIRE-FLOW-REQUIREMENT IS: 1625 GALLONS-PER-MINUTE AT-20-PSI-RESIDUAL-PRESSURE.

BASED-ON:	14,850	SQUARE-FOOT
LARGEST-AREA-BETWEEN-4-HOUR	14,850	SQUARE-FOOT
AREA-SEPARATION-WALLS:	14	FEET
BUILDING-HEIGHT:	1	FLOOR
NUMBER-OF-STORIES:	1	FLOOR
TYPICAL-CONSTRUCTION:	OFFICE	
OCCUPANCY:	OFFICE	
FULL-AUTOMATIC-FIRE	YES	
SPRINKLER-SYSTEM:	YES	

DATE: _____

CITY OF LAS VEGAS SEWER NOTES

- ALL CONSTRUCTION AND MATERIALS SHALL BE IN ACCORDANCE WITH THE LATEST EDITION OF THE DESIGN AND CONSTRUCTION STANDARDS FOR WASTEWATER COLLECTION SYSTEMS AND THE UNIFORM STANDARD SPECIFICATIONS FOR PUBLIC WORKS CONSTRUCTION OFF-SITE IMPROVEMENTS, CLARK COUNTY AREA, NEVADA, AS AMENDED. IN ALL CASES, THESE STANDARDS SHALL SUPERSEDE THE UNIFORM STANDARD SPECIFICATIONS. IT WILL BE THE RESPONSIBILITY OF THE CONTRACTOR TO BE AWARE OF THE CONTENTS OF THE ABOVE SPECIFICATION BOOKS.
- IT SHALL BE THE CONTRACTOR'S RESPONSIBILITY TO PERFORM CONSTRUCTION AS PER PLANS. ANY ADDITIONS, DELETIONS, OR CHANGES SHALL FIRST MEET WITH THE APPROVAL OF THE CONTROLLING AGENCY.
- CHISEL "S" OR "G" IN CURBS WHERE SEWER OR GAS LATERALS PASS UNDER THE CURB.
- POLYVINYL (PVC) SEWER PIPE SHALL MEET ASTM D-3034 SDR 35 SPECIFICATIONS, INSTALLED WITH SAND BEDDING AND BACKFILL OF TYPE GRAVEL.
- ALL MANHOLES IN PAVED STREETS 80' R/W AND LARGER, SHALL HAVE CONCRETE COLLARS.
- TEE SADDLES SHALL BE USED TO CONNECT SEWER LATERALS TO EXISTING MAIN LINES UP TO 12" DIA. SIZE CONNECTIONS TO 15" OR LARGER MAINS SHALL REQUIRE SPECIAL PROCEDURES.
- A SEWER MAIN CROSSING OVER A WATER MAIN OR LESS THAN 18" UNDER A WATER MAIN, MUST BE REINFORCED CONCRETE ENCASED FOR A DISTANCE NOT LESS THAN TEN FEET (10') TO EACH SIDE OF THE CENTERLINE OF THE WATER MAIN.
- ALL CONTRACTORS INSTALLING SEWER MAINS THAT WILL BE UNDER THE JURISDICTION OF THE CONTROLLING AGENCY MUST BE CLASS "A" CONTRACTORS.
- THE CITY OF LAS VEGAS WILL NOT ACCEPT ANY SEWER MAINS WHICH HAVE A VERTICAL DEFLECTION OF MORE THAN ONE TENTH (0.1) OF A FOOT FROM THE APPROVED CONSTRUCTION PLANS. SEWER MAINS FOUND TO EXCEED THIS TOLERANCE WILL HAVE TO BE REPAIRED OR REMOVED AND REPLACED TO THE SATISFACTION OF THE CITY ENGINEER PRIOR TO ACCEPTANCE BY THE CITY.



OWNER/DEVELOPER

TEAMSTERS LOCAL 631
 307 WALL ST.
 LAS VEGAS, NEVADA 89125
 PHONE 702-385-1455

BENCHMARK

CITY OF LAS VEGAS VERICAL DATUM, STA. 2LV02295WMB, ELEV. = 542.83 EQUIVALENT IN FEET 1780.94 (3.2808 FT/M) (NAD 83) RIVET & PLATE IN TOP CURB, NORTHEAST RETURN LAMB BLVD. AND HARRIS AVE. NEVADA.

BASIS OF BEARING

BEING N 00°37'07" E ALONG THE CENTERLINE OF LAMB BLVD. BEING THE EAST LINE OF THE SOUTHEAST QUARTER (SE 1/4) OF SECTION 30, T20S, R62E, M.D.M., COUNTY OF CLARK, STATE OF NEVADA.

LEGAL DESCRIPTION

BEING A PORTION OF THE NORTHEAST QUARTER (NE 1/4) OF THE SOUTHEAST QUARTER (SE 1/4) OF SECTION 30, T20S, R62E, M.D.M., COUNTY OF CLARK, STATE OF NEVADA.

LAS VEGAS VALLEY WATER DISTRICT STANDARD NOTES

- NO WORK SHALL BEGIN UNTIL THE WATER PLANS HAVE BEEN RELEASED FOR CONSTRUCTION BY LVVWD. FOLLOWING WATER PLAN APPROVAL, 48 HOUR NOTICE SHALL BE GIVEN TO THE LVVWD COMMUNICATION SUPPORT CENTER (258-7171) PRIOR TO THE START OF CONSTRUCTION. NOTICE MUST BE GIVEN BY 2:00 P.M. THE BUSINESS DAY PRIOR TO AN LVVWD INSPECTION.
- ALL WORK SHALL CONFORM TO LVVWD STANDARD PLATES, DRAWINGS, AND SPECIFICATIONS AND THE UNIFORM DESIGN AND CONSTRUCTION STANDARDS FOR WATER DISTRIBUTION SYSTEMS (UDACS), LATEST EDITION.
- ALL WORK, EXCEPT AS MODIFIED BY THESE PLANS OR BY NOTE 2, SHALL BE DONE IN ACCORDANCE WITH THE MOST CURRENT DRAFT OR EDITION OF THE UNIFORM STANDARD SPECIFICATIONS FOR PUBLIC WORKS CONSTRUCTION OFF-SITE IMPROVEMENT, CLARK COUNTY AREA.
- A SINGLE PIPE MATERIAL SHALL BE USED THROUGHOUT THE PROJECT UNLESS OTHERWISE APPROVED BY THE LVVWD.
- ALL SERVICE LATERALS TWO (2) INCHES IN DIAMETER AND SMALLER SHALL BE COPPER TUBING WITH LVVWD APPROVED SERVICE SADDLES.
- ALL WATER METER BOXES SHALL BE LOCATED OUTSIDE OF DRIVEWAY AREAS.
- ALL VALVES SHALL BE LOCATED OUTSIDE OF DRIVEWAYS, VALLEY AND CURB GUTTERS.
- THE FOLLOWING REQUIREMENTS MUST BE MET IN THE EVENT OF A WATERLINE AND SANITARY OR STORM SEWER LINE CROSS:
 A. A MINIMUM EIGHTEEN (18) INCH VERTICAL SEPARATION (OUTSIDE TO OUTSIDE) MUST BE MAINTAINED WHEN THE WATER LINE IS INSTALLED OVER THE SANITARY OR STORM SEWER LINE. IF THE VERTICAL SEPARATION CANNOT BE MAINTAINED OR THE WATER LINE MUST BE PLACED UNDER THE SANITARY OR STORM SEWER LINE, THE SANITARY OR STORM SEWER LINE MUST BE CONSTRUCTED WITH ONE OF THE FOLLOWING OR, AS SHOWN ON THESE PLANS:
 A. POTABLE WATER SUPPLY QUALITY MATERIAL
 B. ENCASEMENT, WITH FOUR (4) INCH CONCRETE (MINIMUM)
 C. SLEEPING WITH POTABLE WATER SUPPLY QUALITY PIPE
 EACH PROVISION MUST EXTEND ALONG THE SANITARY OR STORM SEWER, ON EITHER SIDE OF THE MAIN, A MINIMUM 10 FOOT DISTANCE PERPENDICULAR TO THE WATER MAIN EXTERIOR.
- WARNING TAPE SHALL BE REQUIRED OVER ALL MAINS, ALL SIX (6) INCH DIAMETER AND AN ACCEPTABLE WATER SAMPLE OBTAINED, PRIOR TO CONNECTION TO THE LVVWD'S DISTRIBUTION SYSTEM.
- ALL WATER FACILITIES SHALL BE FILLED, DISINFECTED, PRESSURE TESTED, FLUSHED, FILLED AND AN ACCEPTABLE WATER SAMPLE OBTAINED, PRIOR TO CONNECTION TO THE LVVWD'S DISTRIBUTION SYSTEM.
- THE CONTRACTOR MUST OBTAIN ALL METERS TWO (2) INCHES AND SMALLER FROM THE LVVWD CENTRAL STORES. TELEPHONE 258-3152 FORTY-EIGHT (48) HOURS PRIOR TO PICKUP.
- CONSTRUCTION MAY INTERRUPT SERVICE, WITH LVVWD APPROVAL AND PROPER NOTIFICATION, BETWEEN THE HOURS OF 10 P.M. AND 6 A.M., SUNDAY THROUGH THURSDAY. CIRCUMSTANCES MAY REQUIRE TEMPORARY SERVICE FEES BE INSTALLED, WITHOUT LVVWD REIMBURSEMENT. ANY TEMPORARY SERVICE FEE MUST HAVE PRIOR LVVWD APPROVAL.
- ALL WATER FACILITY CONSTRUCTION MATERIALS USED MUST BE AS LISTED ON THE LVVWD'S PRE-APPROVED MATERIALS AND MANUFACTURERS LISTING FOR NEW FACILITIES, LATEST REVISION, OR SPECIFICALLY APPROVED ON THESE PLANS.

APPROVALS

 DATE: 11/22/96

 DATE: 3/18/97

 DATE: 1/25/96
 CITY OF LAS VEGAS FIRE DEPARTMENT

PROJECT NAME: TEAMSTERS LOCAL 631

This project water plan complies with the Las Vegas Valley Water District's technical requirements. However, this water plan is NOT APPROVED FOR CONSTRUCTION at this time and this signature does not provide or imply a water commitment.

 DATE: 12/12/96

LVVWD

CALL BEFORE YOU DIG IT'S A LAW.
 1-800-227-2600

REVISIONS:

Standage & Truitt Engineering, Ltd.

CIVIL ENGINEERING AND SURVEYING
 6885 W. CHARLESTON BOULEVARD
 LAS VEGAS, NEVADA 89117
 PHONE: (702) 255-2950
 FAX: (702) 255-5090

TEAMSTERS LOCAL 631

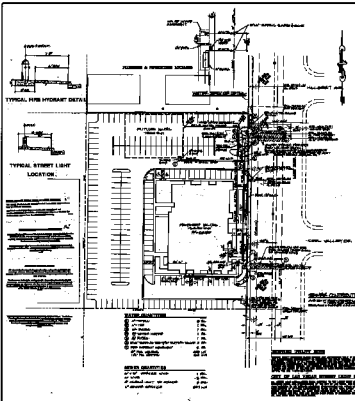
UTILITY PLAN

CITY OF LAS VEGAS

PROFESSIONAL ENGINEER
 MICHAEL J. CREHAN
 CIVIL
 NO. 10664
 11/22/96

96071903
 9719071
 FILE: _____
 DESIGNER: PAO
 DRAWN BY: PAO
 CHECKED BY: MC
 DATE: 9/9/96

SHEET NO.
 3 OF 3



NOTES:

1. ALL UTILITIES SHOWN ARE BASED ON RECORD DRAWINGS AND FIELD SURVEY.
2. THE LOCATION OF UTILITIES IS APPROXIMATE.
3. THE DEPTH OF UTILITIES IS NOT SHOWN.
4. THE LOCATION OF UTILITIES IS SUBJECT TO CHANGE.
5. THE LOCATION OF UTILITIES IS SUBJECT TO CHANGE.
6. THE LOCATION OF UTILITIES IS SUBJECT TO CHANGE.
7. THE LOCATION OF UTILITIES IS SUBJECT TO CHANGE.
8. THE LOCATION OF UTILITIES IS SUBJECT TO CHANGE.
9. THE LOCATION OF UTILITIES IS SUBJECT TO CHANGE.
10. THE LOCATION OF UTILITIES IS SUBJECT TO CHANGE.

WATER QUANTITIES

1" x 1/2" (1.5m)	1.5
2" x 1/2" (2.0m)	2.0
3" x 1/2" (3.0m)	3.0
4" x 1/2" (4.0m)	4.0
6" x 1/2" (6.0m)	6.0
8" x 1/2" (8.0m)	8.0
10" x 1/2" (10.0m)	10.0
12" x 1/2" (12.0m)	12.0
15" x 1/2" (15.0m)	15.0
20" x 1/2" (20.0m)	20.0
24" x 1/2" (24.0m)	24.0
30" x 1/2" (30.0m)	30.0
36" x 1/2" (36.0m)	36.0
42" x 1/2" (42.0m)	42.0
48" x 1/2" (48.0m)	48.0
54" x 1/2" (54.0m)	54.0
60" x 1/2" (60.0m)	60.0
66" x 1/2" (66.0m)	66.0
72" x 1/2" (72.0m)	72.0
78" x 1/2" (78.0m)	78.0
84" x 1/2" (84.0m)	84.0
90" x 1/2" (90.0m)	90.0
96" x 1/2" (96.0m)	96.0
102" x 1/2" (102.0m)	102.0
108" x 1/2" (108.0m)	108.0
114" x 1/2" (114.0m)	114.0
120" x 1/2" (120.0m)	120.0

CITY OF LAS VEGAS WATER MAIN

CITY OF LAS VEGAS SEWER MAIN

CITY OF LAS VEGAS GAS MAIN

CITY OF LAS VEGAS STORMWATER MAIN

CITY OF LAS VEGAS STREET LIGHT

CITY OF LAS VEGAS HYDRANT

CITY OF LAS VEGAS MANHOLE

CITY OF LAS VEGAS BUILDING

CITY OF LAS VEGAS PARKING LOT

CITY OF LAS VEGAS DRIVEWAY

CITY OF LAS VEGAS SIDEWALK

CITY OF LAS VEGAS CURB

CITY OF LAS VEGAS STREET

CITY OF LAS VEGAS ALLEY

CITY OF LAS VEGAS LOT

CITY OF LAS VEGAS TRACT

CITY OF LAS VEGAS BLOCK

CITY OF LAS VEGAS DISTRICT

CITY OF LAS VEGAS ZONE

CITY OF LAS VEGAS WARD

CITY OF LAS VEGAS COUNTY

CITY OF LAS VEGAS STATE

CITY OF LAS VEGAS FEDERAL

CITY OF LAS VEGAS INTERNATIONAL

CITY OF LAS VEGAS NATIONAL

CITY OF LAS VEGAS GLOBAL

CITY OF LAS VEGAS UNIVERSE



- LEGEND**
- 1. WATER MAIN
 - 2. SEWER MAIN
 - 3. GAS MAIN
 - 4. STORMWATER MAIN
 - 5. STREET LIGHT
 - 6. HYDRANT
 - 7. MANHOLE
 - 8. BUILDING
 - 9. PARKING LOT
 - 10. DRIVEWAY
 - 11. SIDEWALK
 - 12. CURB
 - 13. STREET
 - 14. ALLEY
 - 15. LOT
 - 16. TRACT
 - 17. BLOCK
 - 18. DISTRICT
 - 19. ZONE
 - 20. WARD
 - 21. COUNTY
 - 22. STATE
 - 23. FEDERAL
 - 24. INTERNATIONAL
 - 25. NATIONAL
 - 26. GLOBAL
 - 27. UNIVERSE

APPROVALS

 DATE: 10/10/2017

 DATE: 10/10/2017

 DATE: 10/10/2017

 DATE: 10/10/2017

TEAMSTERS LOCAL 831

UTILITY PLAN

Storage & Trill Engineering, LLC

3 OF 3

107-V-2010