

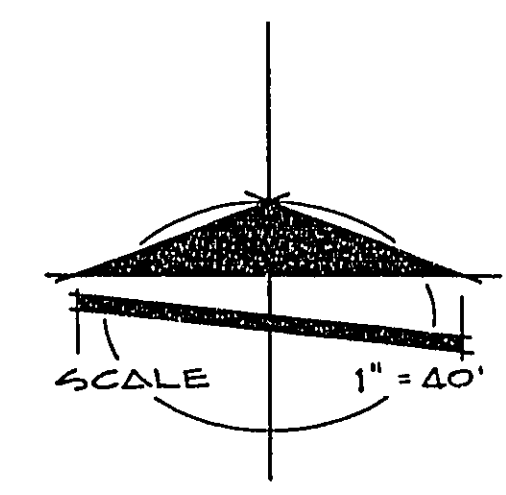
388 (MOBILE - 64)

708 (MOBILE 64)

BENCH MARK
 CIV BOLT & PLATE - BM# 0623 & 1 - LOCATED IN TOP OF CURB AT THE SW CORNER OF WASHINGTON AVE. & LAMB BLVD. CITY OF LAS VEGAS DATUM. ELEVATION 1723.33

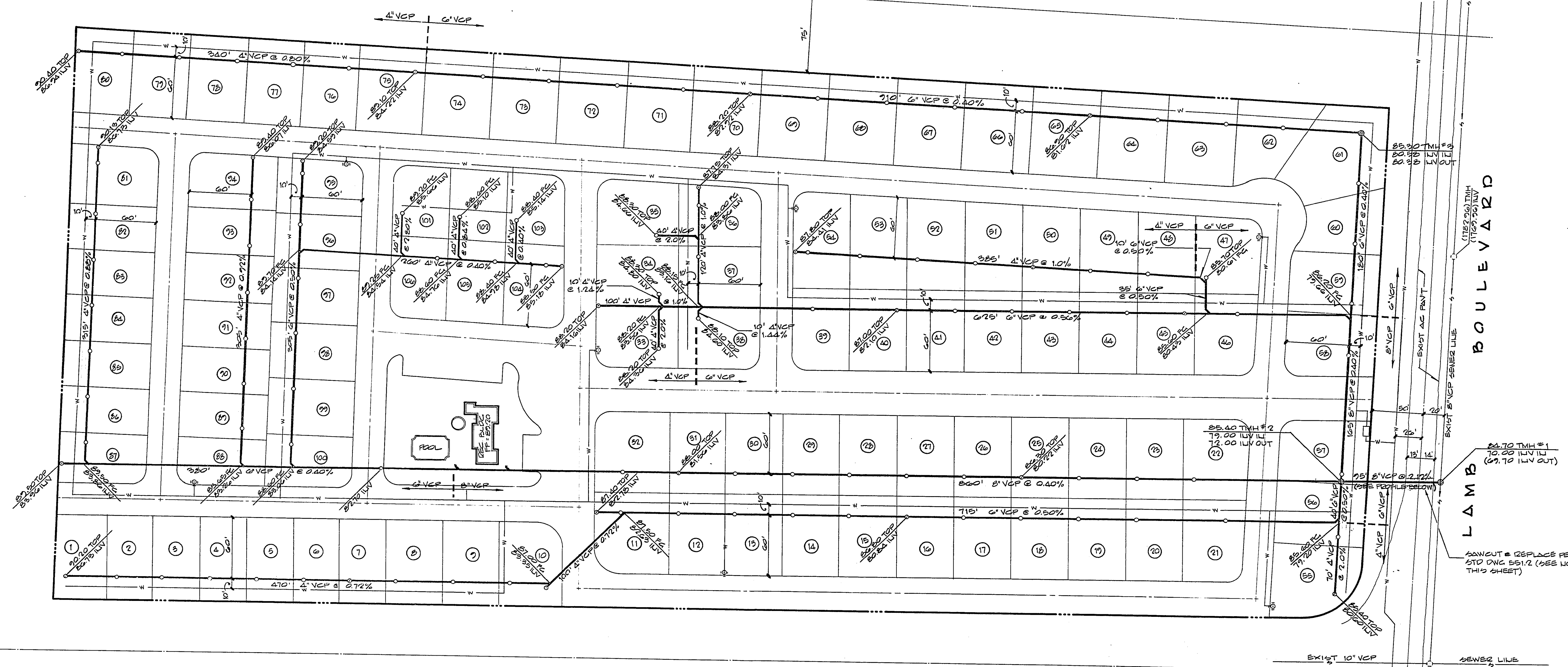
NOTES:
 ALL CONSTRUCTION SHALL CONFORM TO THE LATEST REVISED STANDARD SPECIFICATIONS AND DRAWINGS FOR PUBLIC WORKS CONSTRUCTION CLARK COUNTY, NEVADA

- LEGEND**
- 8" VCP SENEER SERVICE
 - 6" VCP SENEER SERVICE W/CLEANOUT
 - 4" VCP SENEER SERVICE W/CLEANOUT
 - SENEER MAINTHOLE
 - EXIST SENEER LINE
 - W PROPOSED WATER LINE



ADULT
 (SEE SHEET 10 OF)
 DRAINAGE UNIT

CHANNEL



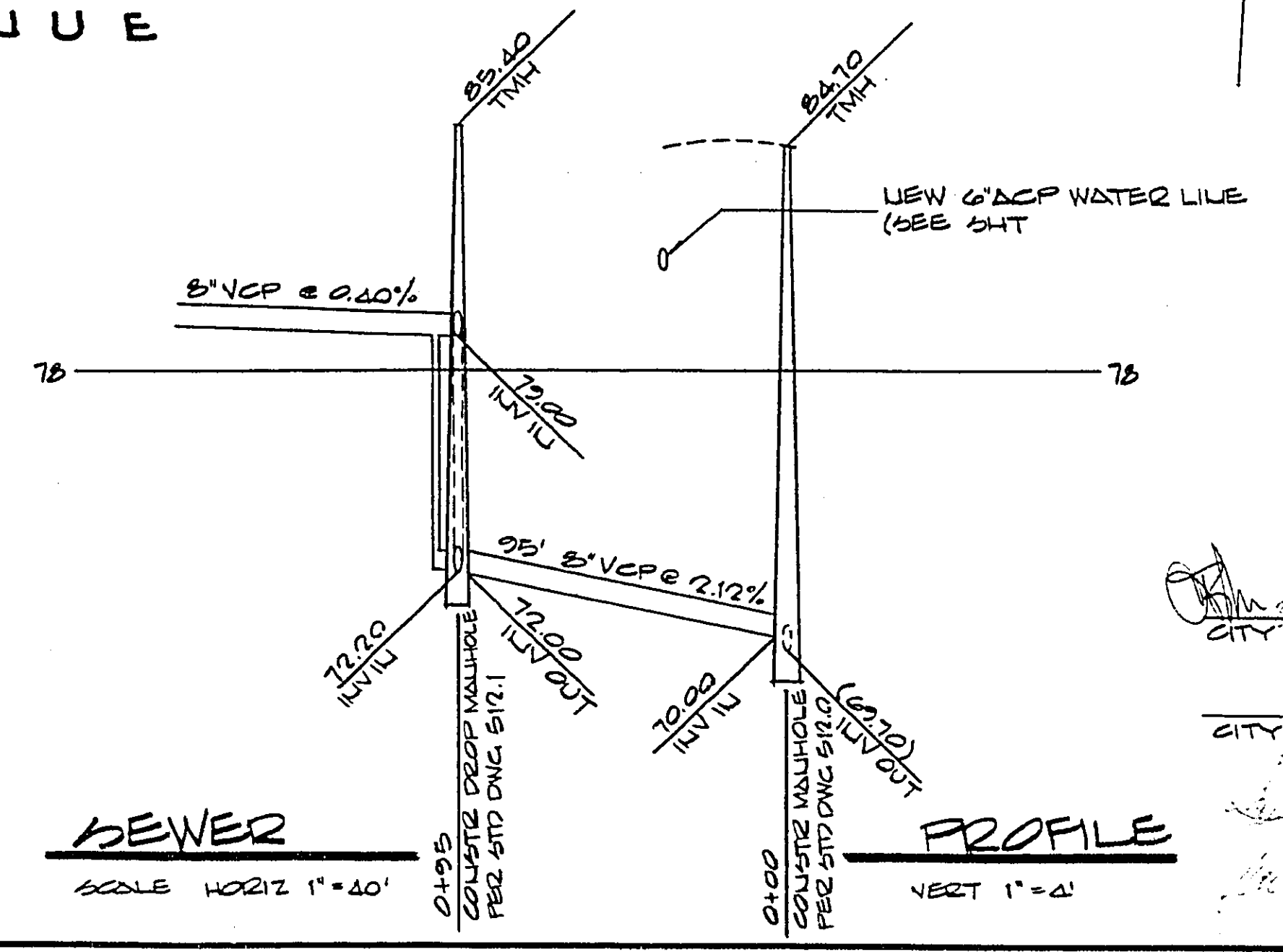
WASHINGTON AVENUE

AVENUE

LAMB BOULEVARD

ESTIMATED QUANTITIES (FAMILY UNIT ONLY)

8" VCP SENEER LINE	1120 LF
6" VCP SENEER LINE	3155 LF
4" VCP SENEER LINE	2710 LF
SENEER MAINTHOLE	3 EA
SENEER SERVICE W/CLEANOUT	12 EA
SENEER SERVICE	94 EA



APPROVALS

CITY OF LAS VEGAS ENGINEER

CITY OF LAS VEGAS SANITATION DEPT.

DATE

DESIGNED BY: BAUCHMAN & TIRNER
 CIVIL ENGINEERS
 3335 WEST CHARLTON BOULEVARD
 LAS VEGAS, NEVADA 89102
 (702) 870-3771

DRAWN BY: ANNI
 CHECKED BY: H.S.
 SCALE: 1" = 40'

DATE: JULY 1977

PREPARED FOR: UNITED PLUMBING

PROJECT: SUZUISE OAKS MOBILE HOME PARK FAMILY UNIT

SECTION 30, TOWNSHIP 20 SOUTH, RANGE 03 EAST, M.D.P.# 4, NEVADA
 CITY OF LAS VEGAS
 SUZUISE OAKS MOBILE HOME PARK

103-V1135

(708 Mobile Home)