

GENERAL NOTES

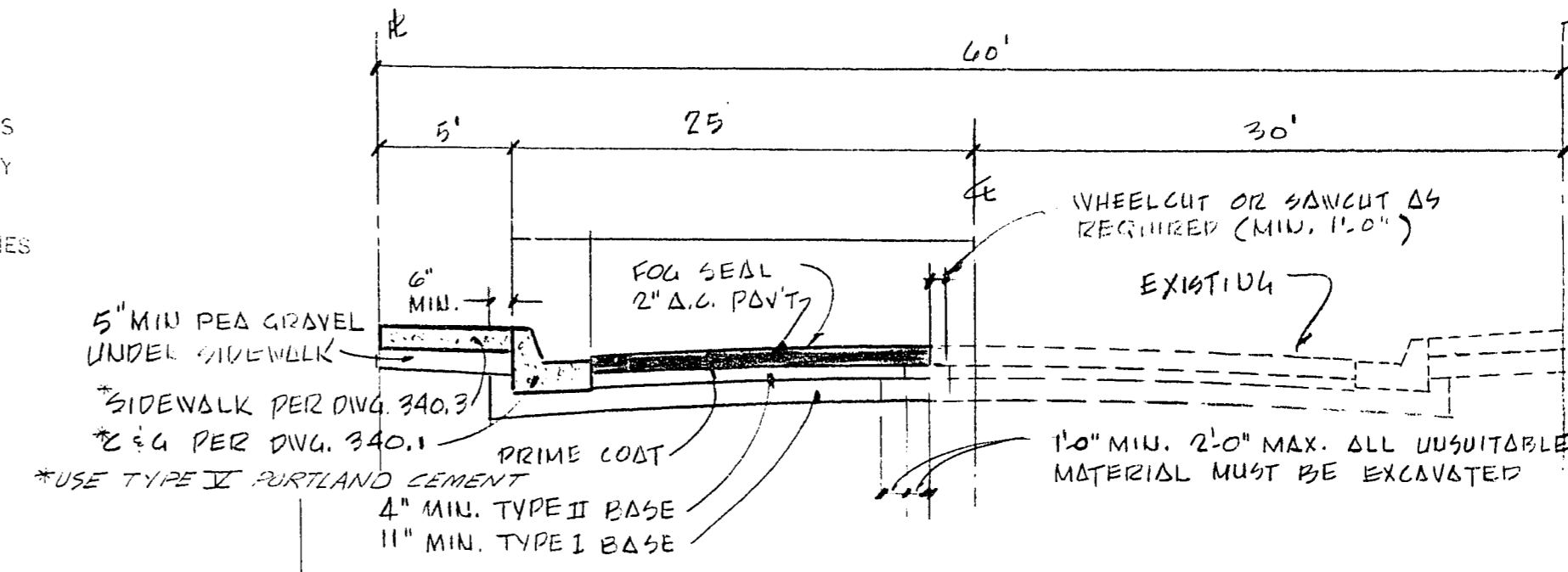
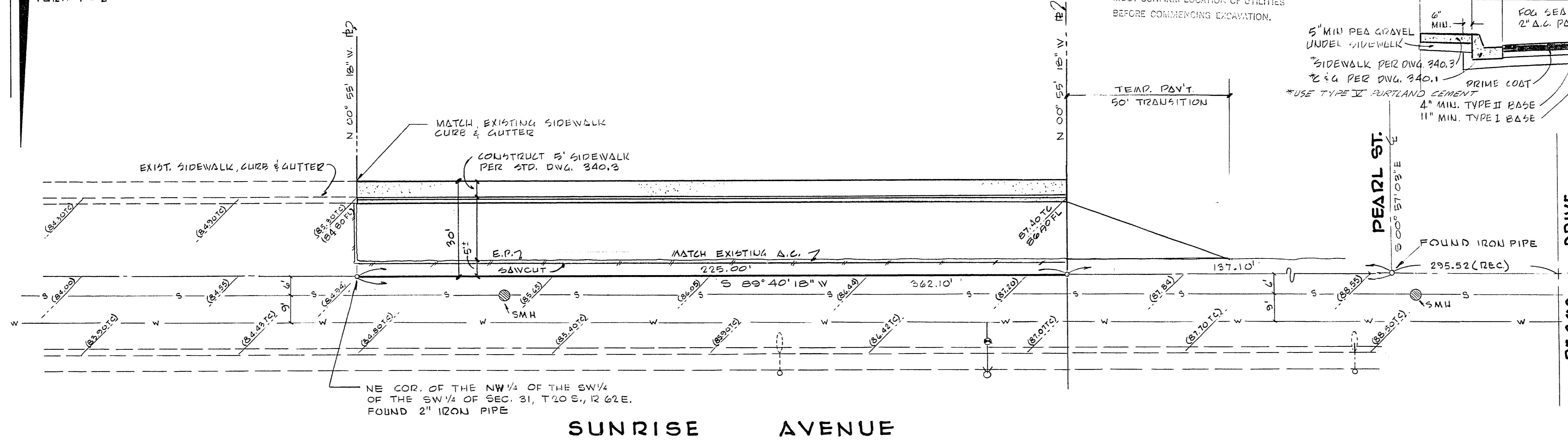
1. ALL CONSTRUCTION AND MATERIALS SHALL BE IN ACCORDANCE WITH CITY OF LAS VEGAS DEPT. OF PUBLIC WORKS STANDARDS AND SPECIFICATIONS.
2. A.C. PAVEMENT TO BE 1/2" ABOVE LIP OF GUTTERS AFTER COMPACTION.

BENCH MARK

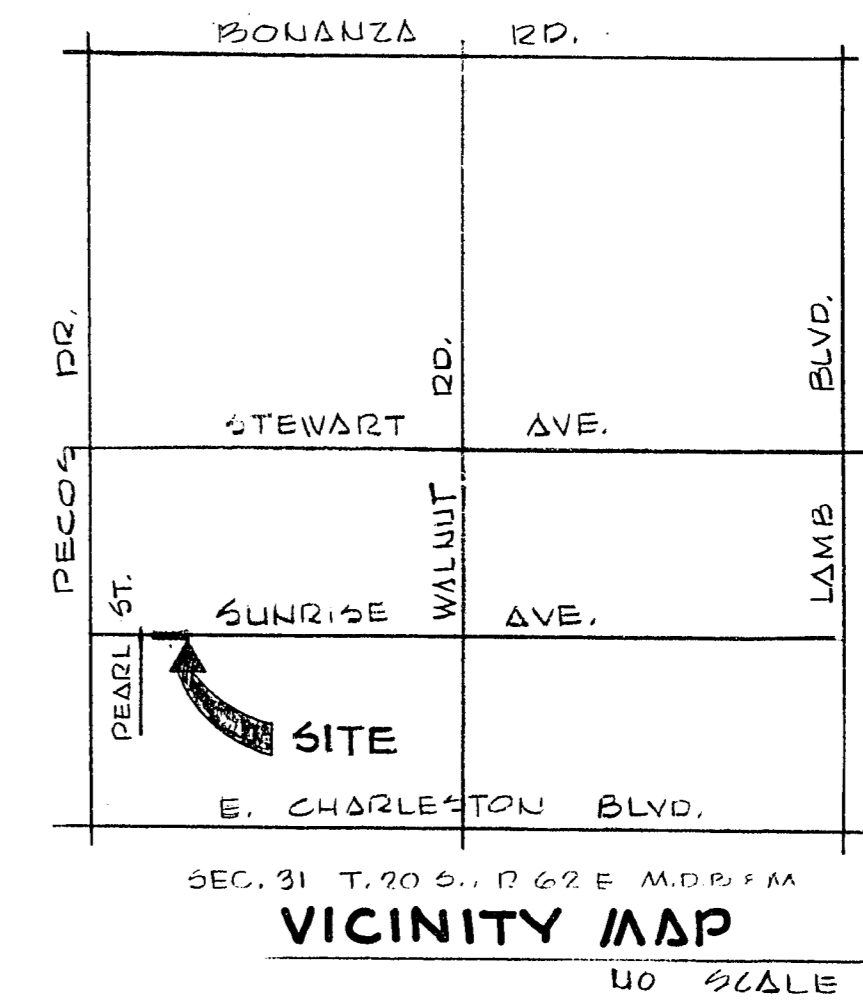
218' WEST OF WEST PROPERTY LINE CITY OF LAS VEGAS
BENCH MARK #06231C-5 IN TOP OF CURB
ELEVATION = 1793.16

NOTE! UTILITY INFORMATION WAS DERIVED FROM DATA FURNISHED BY UTILITY COMPANIES. CONTRACTOR MUST CONFIRM LOCATION OF UTILITIES BEFORE COMMENCING EXCAVATION.

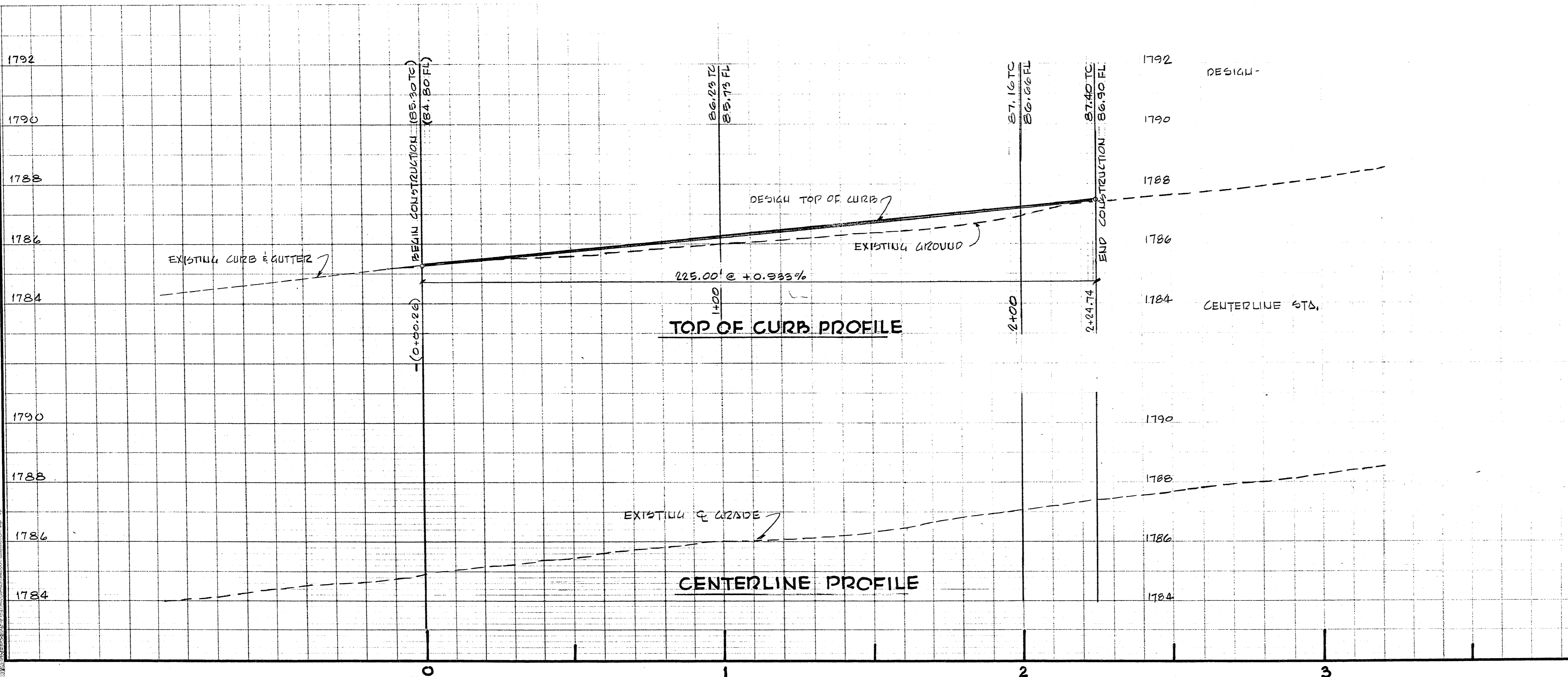
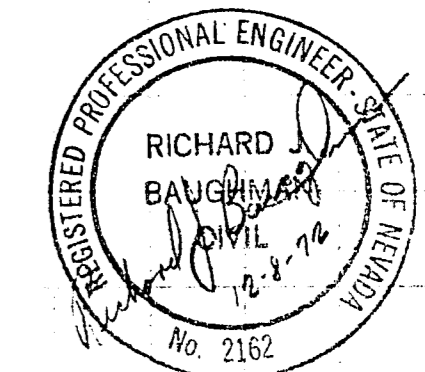
SCALE: HORIZ. 1" = 20'
VERT. 1" = 2'



STREET SECTION



REF. FLD. BK. 75 PP. 61-62



APPROVALS

[Signature]
CITY OF LAS VEGAS - DIRECTOR OF PUBLIC WORKS
DATE: 12-21-22

[Signature]
CITY OF LAS VEGAS - FIELD ENGINEER
DATE: 12-21-22

[Signature]
CITY OF LAS VEGAS - ELECTRICAL ENGINEER
DATE: 12-21-22

APP'D	REVISIONS	DATE	NO.
PREPARED BY: MR. BRUCE MEADE			
DATE: 5 DEC. 72	DESIGN: RJB	DRAWN: W.H.	
CHECK: RJB	SCALE: AS SHOWN		
BAUGHMAN, HAUGHT & TURNER MINING ENGINEERS LAND SURVEYORS LAS VEGAS, NEVADA 3335 WEST CHARLESTON BOULEVARD 702-730-8711			
STREET DESIGN SECTION 31, TOWNSHIP 20 S, RANGE 62 E, MD 6, CLARK CO., NEVADA SUNRISE AVENUE			
SHEET	1	PROJ. NO.	107-V889

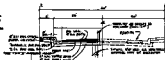
GENERAL NOTES

1. SEE GENERAL AND SPECIAL NOTES ON DRAWINGS
2. SEE SPECIFICATIONS FOR MATERIALS AND METHODS
3. SEE SPECIFICATIONS FOR CONSTRUCTION
4. SEE SPECIFICATIONS FOR FINISHES
5. SEE SPECIFICATIONS FOR UTILITIES
6. SEE SPECIFICATIONS FOR SIGNAGE
7. SEE SPECIFICATIONS FOR LIGHTING
8. SEE SPECIFICATIONS FOR FURNITURE
9. SEE SPECIFICATIONS FOR LANDSCAPE ARCHITECTURE
10. SEE SPECIFICATIONS FOR PUBLIC WORKS
11. SEE SPECIFICATIONS FOR TRANSPORTATION
12. SEE SPECIFICATIONS FOR WATER SUPPLY
13. SEE SPECIFICATIONS FOR SEWERAGE
14. SEE SPECIFICATIONS FOR GAS
15. SEE SPECIFICATIONS FOR TELEPHONE
16. SEE SPECIFICATIONS FOR CABLE TELEVISION
17. SEE SPECIFICATIONS FOR RAILROADS
18. SEE SPECIFICATIONS FOR AIRCRAFT
19. SEE SPECIFICATIONS FOR MARINE
20. SEE SPECIFICATIONS FOR MINING
21. SEE SPECIFICATIONS FOR POWER
22. SEE SPECIFICATIONS FOR PETROLEUM
23. SEE SPECIFICATIONS FOR CHEMICALS
24. SEE SPECIFICATIONS FOR METALS
25. SEE SPECIFICATIONS FOR NON-METALS
26. SEE SPECIFICATIONS FOR CERAMICS
27. SEE SPECIFICATIONS FOR GLASS
28. SEE SPECIFICATIONS FOR PLASTICS
29. SEE SPECIFICATIONS FOR RUBBER
30. SEE SPECIFICATIONS FOR LEADERSHIP
31. SEE SPECIFICATIONS FOR MANAGEMENT
32. SEE SPECIFICATIONS FOR COMMUNICATIONS
33. SEE SPECIFICATIONS FOR INFORMATION TECHNOLOGY
34. SEE SPECIFICATIONS FOR BUSINESS
35. SEE SPECIFICATIONS FOR EDUCATION
36. SEE SPECIFICATIONS FOR HEALTHCARE
37. SEE SPECIFICATIONS FOR SOCIAL SERVICES
38. SEE SPECIFICATIONS FOR ARTS AND CULTURE
39. SEE SPECIFICATIONS FOR RECREATION
40. SEE SPECIFICATIONS FOR ENVIRONMENTAL SERVICES
41. SEE SPECIFICATIONS FOR PUBLIC SAFETY
42. SEE SPECIFICATIONS FOR DEFENSE
43. SEE SPECIFICATIONS FOR SPACE
44. SEE SPECIFICATIONS FOR NUCLEAR
45. SEE SPECIFICATIONS FOR AEROSPACE
46. SEE SPECIFICATIONS FOR MARINE ENGINEERING
47. SEE SPECIFICATIONS FOR AERONAUTICAL ENGINEERING
48. SEE SPECIFICATIONS FOR MECHANICAL ENGINEERING
49. SEE SPECIFICATIONS FOR ELECTRICAL ENGINEERING
50. SEE SPECIFICATIONS FOR CIVIL ENGINEERING
51. SEE SPECIFICATIONS FOR CHEMICAL ENGINEERING
52. SEE SPECIFICATIONS FOR METALLURGICAL ENGINEERING
53. SEE SPECIFICATIONS FOR INDUSTRIAL ENGINEERING
54. SEE SPECIFICATIONS FOR AGRICULTURAL ENGINEERING
55. SEE SPECIFICATIONS FOR BIOMEDICAL ENGINEERING
56. SEE SPECIFICATIONS FOR ENVIRONMENTAL ENGINEERING
57. SEE SPECIFICATIONS FOR FOOD ENGINEERING
58. SEE SPECIFICATIONS FOR TEXTILE ENGINEERING
59. SEE SPECIFICATIONS FOR FIBER ENGINEERING
60. SEE SPECIFICATIONS FOR PAPER ENGINEERING
61. SEE SPECIFICATIONS FOR POLYMER ENGINEERING
62. SEE SPECIFICATIONS FOR CERAMIC ENGINEERING
63. SEE SPECIFICATIONS FOR GLASS ENGINEERING
64. SEE SPECIFICATIONS FOR PLASTIC ENGINEERING
65. SEE SPECIFICATIONS FOR RUBBER ENGINEERING
66. SEE SPECIFICATIONS FOR LEADERSHIP ENGINEERING
67. SEE SPECIFICATIONS FOR MANAGEMENT ENGINEERING
68. SEE SPECIFICATIONS FOR COMMUNICATIONS ENGINEERING
69. SEE SPECIFICATIONS FOR INFORMATION TECHNOLOGY ENGINEERING
70. SEE SPECIFICATIONS FOR BUSINESS ENGINEERING
71. SEE SPECIFICATIONS FOR EDUCATION ENGINEERING
72. SEE SPECIFICATIONS FOR HEALTHCARE ENGINEERING
73. SEE SPECIFICATIONS FOR SOCIAL SERVICES ENGINEERING
74. SEE SPECIFICATIONS FOR ARTS AND CULTURE ENGINEERING
75. SEE SPECIFICATIONS FOR RECREATION ENGINEERING
76. SEE SPECIFICATIONS FOR ENVIRONMENTAL SERVICES ENGINEERING
77. SEE SPECIFICATIONS FOR PUBLIC SAFETY ENGINEERING
78. SEE SPECIFICATIONS FOR DEFENSE ENGINEERING
79. SEE SPECIFICATIONS FOR SPACE ENGINEERING
80. SEE SPECIFICATIONS FOR NUCLEAR ENGINEERING
81. SEE SPECIFICATIONS FOR AEROSPACE ENGINEERING
82. SEE SPECIFICATIONS FOR MARINE ENGINEERING
83. SEE SPECIFICATIONS FOR AERONAUTICAL ENGINEERING
84. SEE SPECIFICATIONS FOR MECHANICAL ENGINEERING
85. SEE SPECIFICATIONS FOR ELECTRICAL ENGINEERING
86. SEE SPECIFICATIONS FOR CIVIL ENGINEERING
87. SEE SPECIFICATIONS FOR CHEMICAL ENGINEERING
88. SEE SPECIFICATIONS FOR METALLURGICAL ENGINEERING
89. SEE SPECIFICATIONS FOR INDUSTRIAL ENGINEERING
90. SEE SPECIFICATIONS FOR AGRICULTURAL ENGINEERING
91. SEE SPECIFICATIONS FOR BIOMEDICAL ENGINEERING
92. SEE SPECIFICATIONS FOR ENVIRONMENTAL ENGINEERING
93. SEE SPECIFICATIONS FOR FOOD ENGINEERING
94. SEE SPECIFICATIONS FOR TEXTILE ENGINEERING
95. SEE SPECIFICATIONS FOR FIBER ENGINEERING
96. SEE SPECIFICATIONS FOR PAPER ENGINEERING
97. SEE SPECIFICATIONS FOR POLYMER ENGINEERING
98. SEE SPECIFICATIONS FOR CERAMIC ENGINEERING
99. SEE SPECIFICATIONS FOR GLASS ENGINEERING
100. SEE SPECIFICATIONS FOR PLASTIC ENGINEERING

SECTION A-A'

SECTION A-A' THROUGH THE CENTERLINE OF THE ROADWAY AND THE CENTERLINE OF THE SIDEWALK.

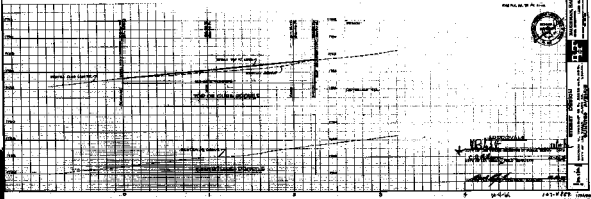
NOTE: THIS SECTION IS FOR THE CENTERLINE OF THE ROADWAY AND THE CENTERLINE OF THE SIDEWALK. SEE SECTION B-B' FOR THE CENTERLINE OF THE SIDEWALK AND THE CENTERLINE OF THE ROADWAY.



STREET SECTION



SUNRISS AVENUE



APPROVED
 [Signature]
 CIVIL ENGINEER
 STATE OF CALIFORNIA
 No. 12345

PROJECT NO. 12345
 SHEET NO. 1 OF 1
 DATE: 1964
 DRAWN BY: [Name]
 CHECKED BY: [Name]
 APPROVED BY: [Name]
 CIVIL ENGINEER
 STATE OF CALIFORNIA
 No. 12345