


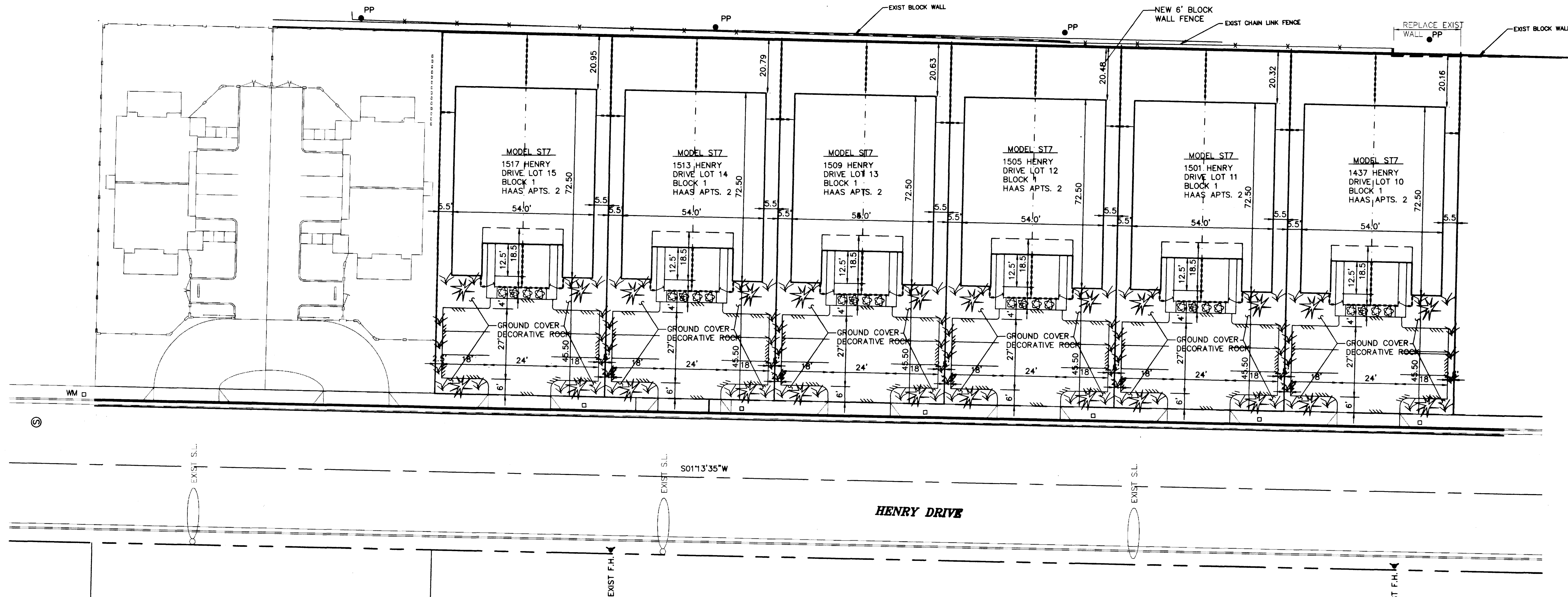


LANDSCAPING LEGEND

-  24" BOX PINE TREE
-  5 GAL PINK LADY
-  5 GAL TEXAS RANGER

CODE ANALYSIS

| CODE CATEGORY | ALLOWED/REQUIRED | PROVIDED |
|----------------------|----------------------|----------------------|
| R2 EXISTING ZONING | 2 SINGLE FAMILY RES. | 2 SINGLE FAMILY RES. |
| APPLICABLE CODE | UBC 1997 | UBC 1997 |
| OCCUPANCY | R-3 | R-3 |
| TYPE OF CONSTRUCTION | TYPE-V | TYPE-V |
| LOT SIZE | 6500 SQ FT | 9100 SQ FT |
| LOT WIDTH | 60 FT | 65 FT |
| LOT COVERAGE | N/A | 3400 SQ FT (37%) |
| BUILDING HEIGHT | 35 FT | 16 FT |
| PARKING | 4 | 6 |



PHASE 1

COMPLETED 12/97

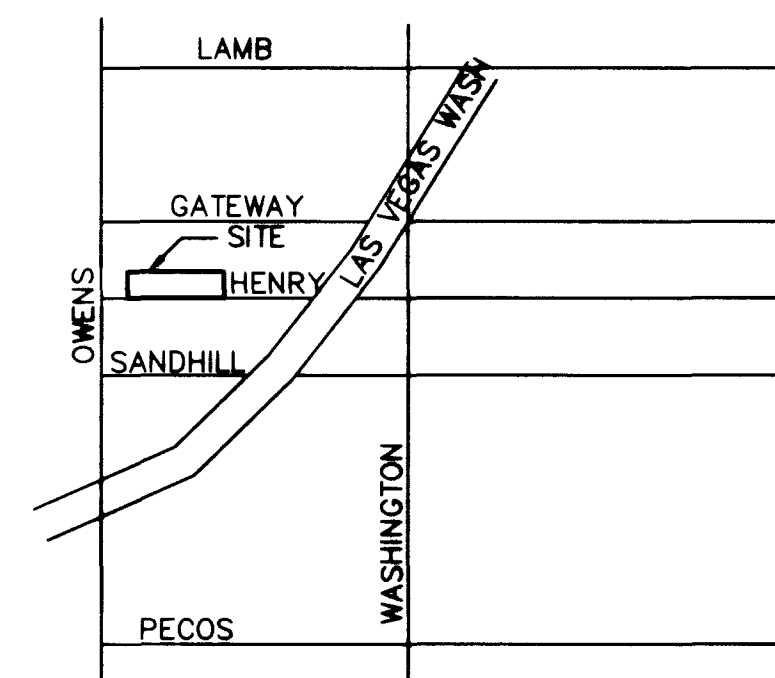
PHASE 2

STERLING HARBOR 1

CITY OF LAS VEGAS



SCALE: 1" = 20'



VICINITY MAP
NO SCALE

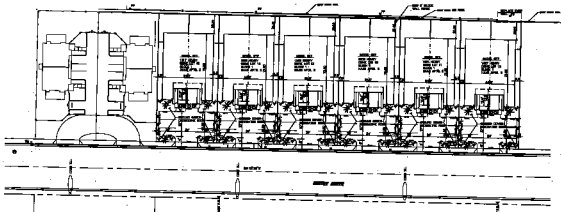
| | |
|--|---|
| <p>PREPARED FOR: STERLING TAYLOR CO. 4093 EAST OWENS LAS VEGAS, NV 89110 (702) 459-7449</p> | <p>BY: AFLECK ENTERPRISES 1087 TRAVIS AVE LAS VEGAS, NEVADA 89104 (702) 431-4827</p> |
| <p>SHEET TITLE: SITE & LANDSCAPING PLAN TITLE: STERLING HARBOR 1 PHASE 2 HENRY DRIVE NEAR OWENS CITY OF LAS VEGAS, NEVADA</p> | |
| <p>DRAWN BY: L.H. AFLECK 6/12/98 DESIGNED BY: L.H. AFLECK 6/12/98 CHECKED BY: L.H. AFLECK 6/12/98 PROJECT NO: 97109</p> | <p>SCALE: 1" = 20' SHEET: C3 3 OF 4 SHEETS DRAWING NO: 107Y-4608-2</p> |
| | |

LANDSCAPE LEGEND

- ☼ 10' 0" PALM TREE
- ☼ 8' 0" PALM TREE
- ☼ 6' 0" PALM TREE
- ☼ 4' 0" PALM TREE

NOTE ANALYSIS

| NO. | DESCRIPTION | DATE |
|-----|--------------|----------|
| 1 | REVISED PLAN | 12/15/97 |
| 2 | REVISED PLAN | 12/15/97 |
| 3 | REVISED PLAN | 12/15/97 |
| 4 | REVISED PLAN | 12/15/97 |
| 5 | REVISED PLAN | 12/15/97 |
| 6 | REVISED PLAN | 12/15/97 |
| 7 | REVISED PLAN | 12/15/97 |
| 8 | REVISED PLAN | 12/15/97 |
| 9 | REVISED PLAN | 12/15/97 |
| 10 | REVISED PLAN | 12/15/97 |



PHASE 1

COMPLETED 12/97

PHASE 2

STERLING HARBOR 1

CITY OF LAS VEGAS



SITE & LANDSCAPE PLAN
 STERLING HARBOR 1 PHASE 2
 KENNETH DAVIS NEAR DRIVE
 CITY OF LAS VEGAS, NEVADA

