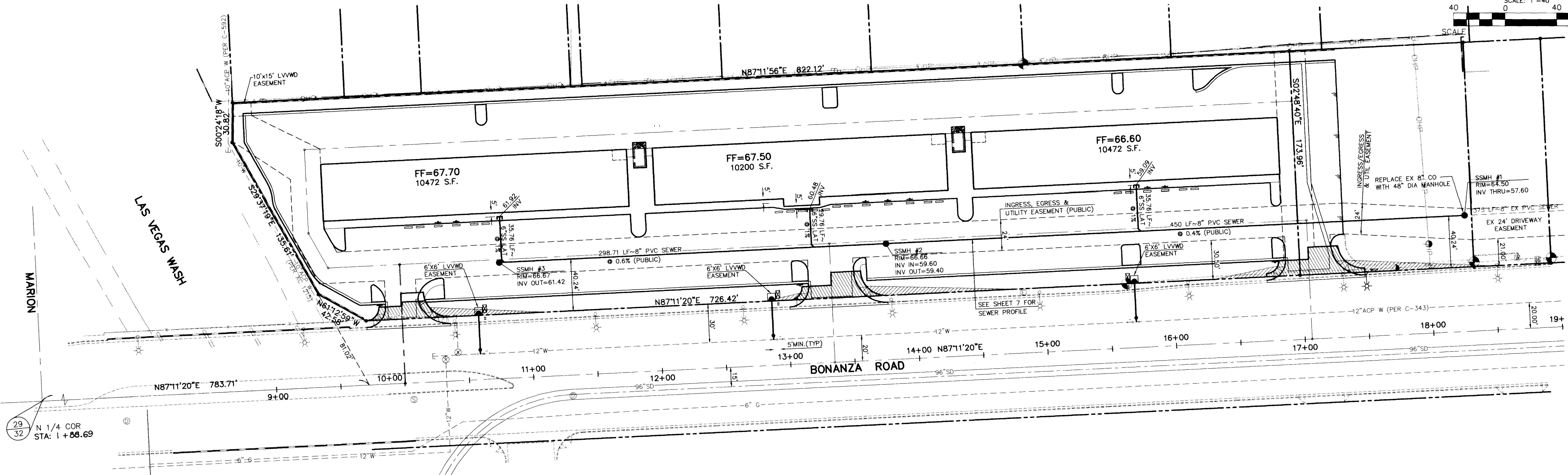
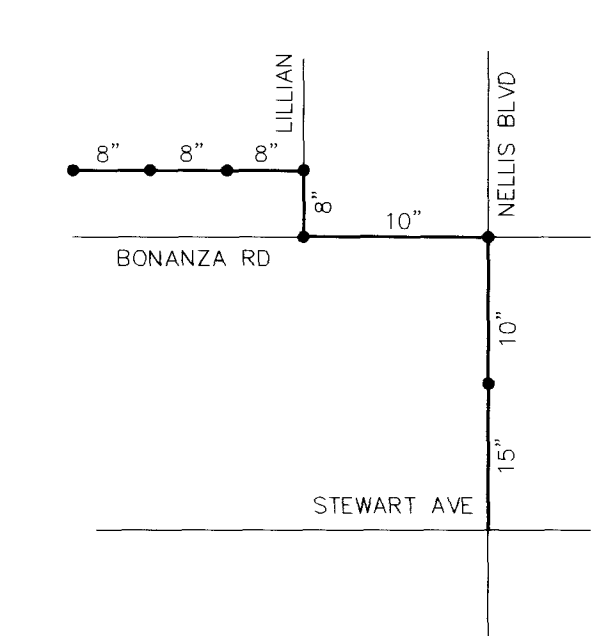


SCALE: 1"=40'  
0 40 80  
FEET

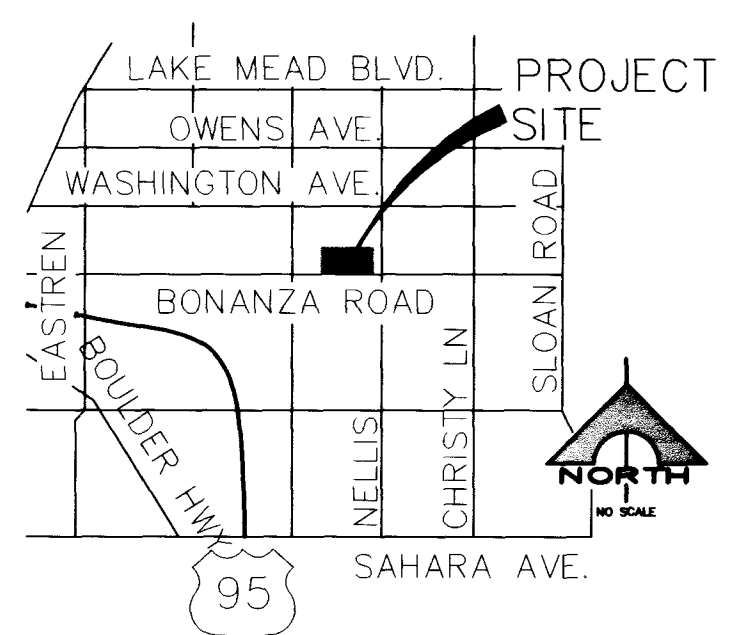


29  
32  
N 1/4 COR  
STA: 1+58.69



LOCATION MAP

8" SEWER IN LILLIAN RUNS SOUTH AND DISCHARGES INTO A 10" IN BONANZA ROAD. THIS 10" RUNS EAST AND DISCHARGES INTO A 10" IN NELLIS BLVD WHICH RUNS SOUTH AND DISCHARGES INTO A 15" APPROX 700' NORTH OF STEWART AVE.



VICINITY MAP

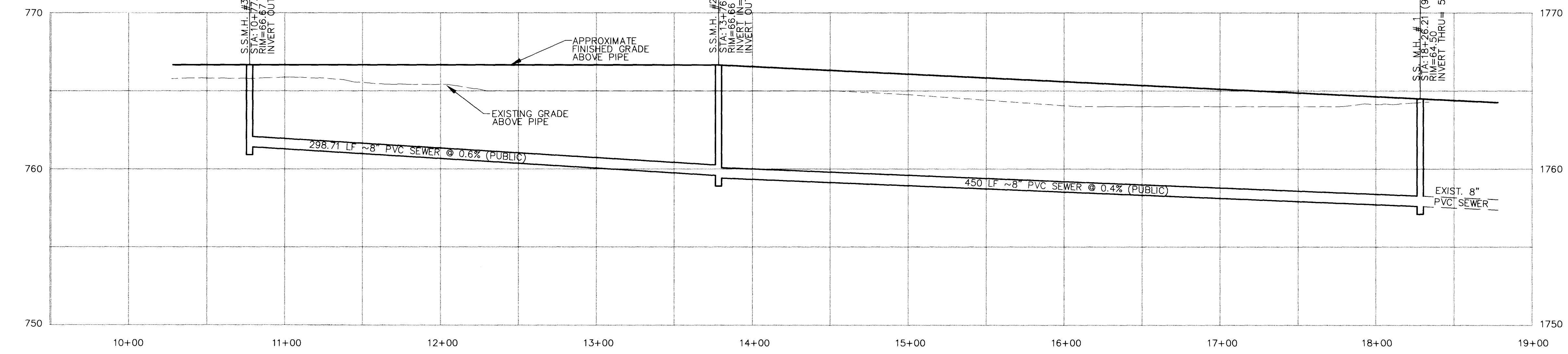
- LEGEND**
- 12"W— EXISTING WATER LINE
  - 8"S5— EXISTING SEWER LINE
  - G— EXISTING GAS LINE
  - 12"SD— EXISTING STORM DRAIN
  - OH— EXISTING OVERHEAD POWER
  - ⊙ EXISTING FIRE HYDRANT
  - ⊙ EXISTING WATER VALVE
  - ⊙ EXISTING MANHOLE
  - PROPOSED WATER LINE
  - PROPOSED SEWER LINE
  - PROPOSED FIRE HYDRANT
  - PROPOSED WATER VALVE
  - PROPOSED MANHOLE
  - PROPOSED CLEANOUT

**CONSTRUCTION NOTES AND ESTIMATE OF QUANTITIES**

SEWER	
48" STANDARD MANHOLE (PUBLIC)	3 EA
8" PVC SEWER (PUBLIC)	749 LF
6" PVC SEWER	101 LF

**SEWER CONTRIBUTION**

AVERAGE FLOW = 0.0112 MGD  
PEAK FLOW = 0.0390 MGD



**BENCHMARK**

BW #32, 2LV02 2954, BEING A RIVET AND PLATE IN TOP OF CURB, NE RETURN MARION DRIVE AND BONANZA ROAD.  
ELEV: 1766.98' NAVD88

**BASIS OF BEARINGS**

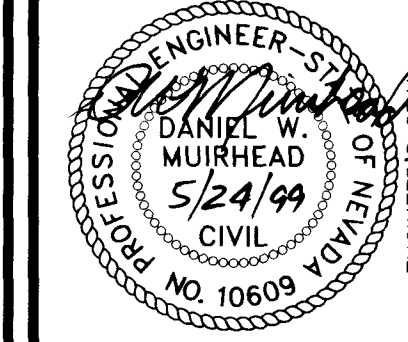
N 87°11'20" E BEING THE SOUTH LINE OF THE SOUTHEAST QUARTER (SE 1/4) OF SECTION 29, TOWNSHIP 20 SOUTH, RANGE 62 EAST, M.D.M., CITY OF LAS VEGAS, NEVADA., AS PER PARCEL MAP 48, PAGE 97 OF CLARK COUNTY OFFICIAL RECORDS, SAID LINE ALSO BEING THE CENTERLINE OF BONANZA ROAD.

**DISCLAIMER NOTE**

UTILITY LOCATIONS SHOWN HEREON ARE APPROXIMATE ONLY. IT SHALL BE THE CONTRACTOR'S RESPONSIBILITY TO DETERMINE THE EXACT HORIZONTAL AND VERTICAL LOCATION OF ALL EXISTING UNDERGROUND AND OVERHEAD UTILITIES PRIOR TO COMMENCING CONSTRUCTION. NO REPRESENTATION IS MADE THAT ALL EXISTING UTILITIES ARE SHOWN HEREON. THE ENGINEER ASSUMES NO RESPONSIBILITY FOR UTILITIES NOT SHOWN OR UTILITIES NOT SHOWN IN THEIR PROPER LOCATION.



SEAGULL PARK  
BONANZA EAST PLAZA  
SEWER PLAN & PROFILE



**SHEET**  
**C6**  
6 of 7 SHEETS

**JOB# 99007**  
107-V3097

**TETRA**  
Southwest  
3081 South Valley View - Las Vegas, Nevada 89012  
Phone: (702) 889-6010 • Fax: (702) 889-6020

SCALE (H)	SCALE (V)	DESIGN BY	DRAWN BY	REV. #	BY	DATE	DESCRIPTION	APPROVAL
1"=40'	1"=4'							

