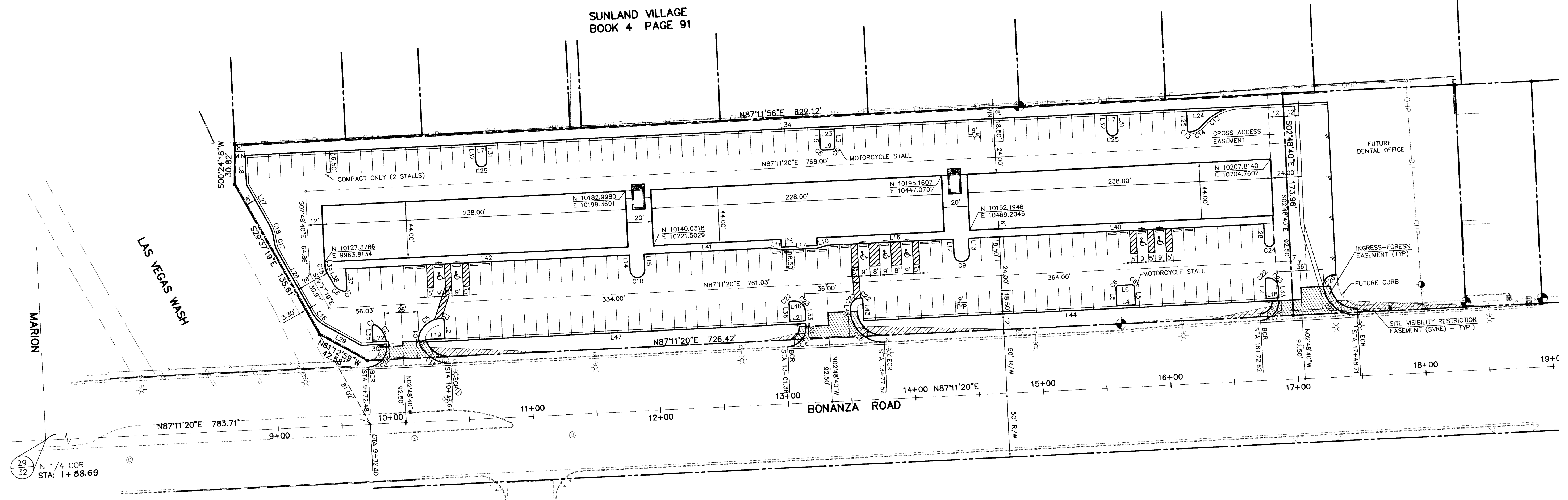


SUNLAND VILLAGE
BOOK 4 PAGE 91



29
32
N 1/4 COR
STA: 1+88.69

No.	Bearing	Distance
L1	S02°48'40"E	1.89
L2	S02°48'40"E	14.00
L3	N02°48'40"W	13.50
L4	N87°11'20"E	14.00
L5	S02°48'40"E	13.50
L6	N87°11'20"E	10.00
L7	N87°11'20"E	8.00
L8	S02°48'40"E	22.75
L9	S87°11'20"W	7.00
L10	N74°39'36"E	9.22
L11	N80°16'56"W	9.22
L12	N02°48'40"W	12.25
L13	S02°48'40"E	12.25
L14	N02°48'40"W	12.50
L15	S02°48'40"E	12.50
L16	N87°11'20"E	98.55
L17	N87°11'20"E	26.89
L18	N87°11'20"E	9.50
L19	S87°11'20"W	14.98
L20	S02°48'40"E	2.03
L21	N87°11'20"E	12.00
L22	N87°11'20"E	9.93
L23	N87°11'20"E	11.00
L24	N87°11'20"E	27.27
L25	S02°48'40"E	13.96
L26	S29°37'19"E	55.43
L27	N29°37'19"W	36.26
L28	S02°48'40"E	14.50
L29	N61°12'59"W	32.31
L30	S87°11'20"W	19.62
L31	N02°48'40"W	11.50
L32	S02°48'40"E	11.50
L33	S02°48'40"E	7.50
L34	N87°11'20"E	849.59
L35	S02°48'40"E	11.46
L36	N02°48'40"W	14.00
L37	S02°48'40"E	16.19
L38	S29°37'19"E	11.73
L39	S02°48'40"E	4.69
L40	N87°11'20"E	232.00
L41	N87°11'20"E	99.55
L42	N87°11'20"E	223.00
L43	S02°48'40"E	16.50
L44	N87°11'20"E	325.49
L45	N02°48'40"W	2.04
L46	N87°11'20"E	2.50
L47	N87°11'20"E	297.22

No.	Radius	Delta	Length	Tangent
C1	1.50	123°15'23"	3.23	2.78
C2	17.00	51°40'53"	15.33	8.23
C3	1.50	88°43'04"	2.32	1.47
C4	10.00	45°34'23"	7.95	4.20
C5	19.00	65°33'48"	21.74	12.24
C6	2.00	90°00'00"	3.14	2.00
C7	1.50	103°59'13"	2.72	1.92
C8	12.00	49°12'08"	10.30	5.49
C9	3.75	180°00'00"	18.06	0.00
C10	5.50	180°00'00"	17.28	0.00
C11	25.00	70°08'45"	30.61	17.55
C12	40.00	27°21'29"	19.10	9.74
C13	1.50	94°14'53"	2.47	1.62
C14	15.00	43°28'27"	11.38	5.98
C15	5.00	26°48'39"	2.34	1.19
C16	25.00	31°35'40"	13.79	7.07
C17	25.00	23°51'31"	10.41	5.28
C18	30.00	23°51'31"	12.49	6.34
C19	15.00	87°30'37"	22.91	14.36
C20	8.00	106°28'18"	14.87	10.71
C21	25.00	86°35'33"	37.78	23.56
C22	1.50	90°00'00"	2.36	1.50
C23	8.00	90°00'00"	12.57	8.00
C24	3.50	180°00'00"	11.00	0.00
C25	4.00	180°00'00"	12.57	0.00
C26	25.00	90°02'19"	39.29	25.02
C27	15.00	90°03'24"	23.58	15.01
C28	15.00	90°05'01"	23.58	15.02

BASIS OF BEARINGS

N 87°11'20" E BEING THE SOUTH LINE OF THE SOUTHEAST QUARTER (SE 1/4) OF SECTION 29, TOWNSHIP 20 SOUTH, RANGE 62 EAST, M.D.M., CITY OF LAS VEGAS, NEVADA, AS PER PARCEL MAP 48, PAGE 97 OF CLARK COUNTY OFFICIAL RECORDS, SAID LINE ALSO BEING THE CENTERLINE OF BONANZA ROAD.

BENCHMARK

BM #32, 2LV02 2954, BEING A RIVET AND PLATE IN TOP OF CURB, NE RETURN MARION DRIVE AND BONANZA ROAD.
ELEV: 1766.98' NAVD88

DISCLAIMER NOTE

UTILITY LOCATIONS SHOWN HEREON ARE APPROXIMATE ONLY. IT SHALL BE THE CONTRACTOR'S RESPONSIBILITY TO DETERMINE THE EXACT HORIZONTAL AND VERTICAL LOCATION OF ALL EXISTING UNDERGROUND AND OVERHEAD UTILITIES PRIOR TO COMMENCING CONSTRUCTION. NO REPRESENTATION IS MADE THAT ALL EXISTING UTILITIES ARE SHOWN HEREON. THE ENGINEER ASSUMES NO RESPONSIBILITY FOR UTILITIES NOT SHOWN OR UTILITIES NOT SHOWN IN THEIR PROPER LOCATION.

Avoid cutting underground utility lines. It's costly.

Call before you Dig.

1-800-227-2600

UNDERGROUND SERVICE (USA)

Avoid hitting overhead power lines. It's costly.

CALL BEFORE YOU DO OVERHEAD.

1-702-593-6111

TETRA Southwest
3081 South Valley View • Las Vegas, Nevada 89012
Phone: (702) 889-6010 • Fax: (702) 889-6020

SCALE (H) 1"=40'
SCALE (V) NONE
DESIGN BY PA
DRAWN BY FA

REV. # BY DATE DESCRIPTION APPROVAL

SEAGULL PARK
BONANZA EAST PLAZA
HORIZONTAL CONTROL

PROFESSIONAL ENGINEER
DANIEL W. MUIRHEAD
5/24/99
CIVIL
106605
NORTH LAS VEGAS, NV

SHEET C3
3 of 7 SHEETS
JOB# 99007
107-V3097

