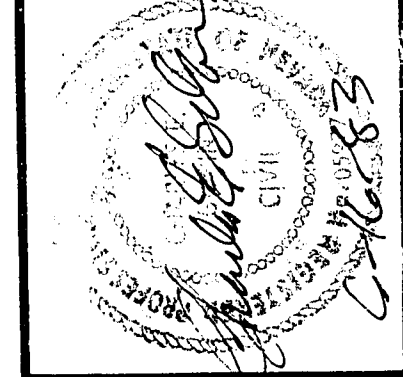


APPROXIMATE QUANTITIES — THIS SHEET			
ITEM	DESCRIPTION	UNIT	QUANTITY
630.00.01	4" LATERAL (EXTENSION) (1)	L.F.	16
630.00.02	6" LATERAL (6)	L.F.	451
630.00.03	8" LATERAL (EXTENSION) (2)	L.F.	20

NOTE: ALL SEWER LATERALS IN THIS SHEET ARE S.I.D. FUNDED ITEMS.

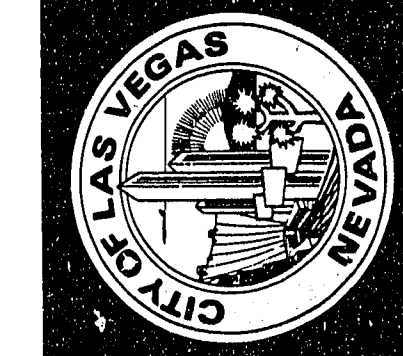
Revisions	Date

Scale (H) 1" = 100'
 Scale (V) 1" = 20'
 Date 1-27-83
 Design by DAVID MCGONEGLE
 Drawn by JOHNNY McDONNELL
 Approved by *David M. McGonegle*
 Date 6/16/83



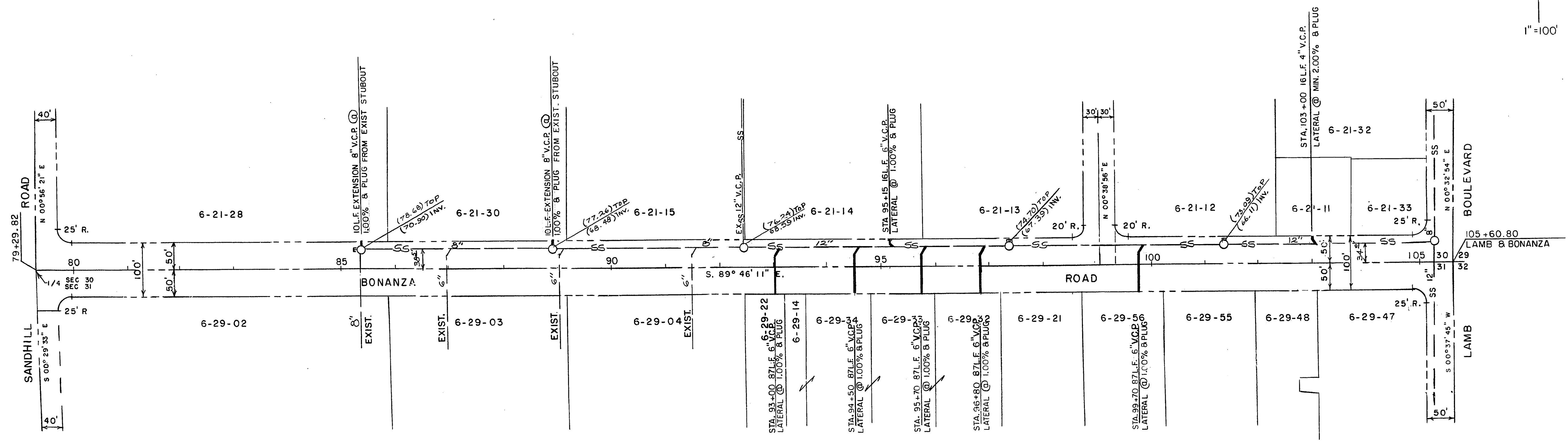
Department of Public Services
 Engineering Design Division
 SANITARY SEWER LATERALS
 EAST BONANZA ROAD
 SANDHILL RD. TO LAMB BLVD.

SPECIAL IMPROVEMENT DISTRICT 449



Drawing no. 107-V849B 1/1

CLV BENCH MARK S.W. HONOLULU & BONANZA ELEV. 1784.59 - B.M. 06231 A.I.P. 4200 E. BONANZA ELEV. 1777.42



NOTE: FOR SEWER LATERALS DETAILS SEE CLV STANDARD DRAWINGS 512.5, 512.6 & 512.7.

EXISTING UTILITIES ARE LOCATED ON THE PLANS FOR THE CONVENIENCE OF THE CONTRACTOR ONLY. THE CONTRACTOR SHALL BE RESPONSIBLE FOR THE LOCATION OF UTILITIES AND THE CITY BEARS NO RESPONSIBILITY FOR UTILITIES NOT SHOWN ON THE PLANS OR NOT IN THE LOCATION SHOWN ON THE PLANS.

