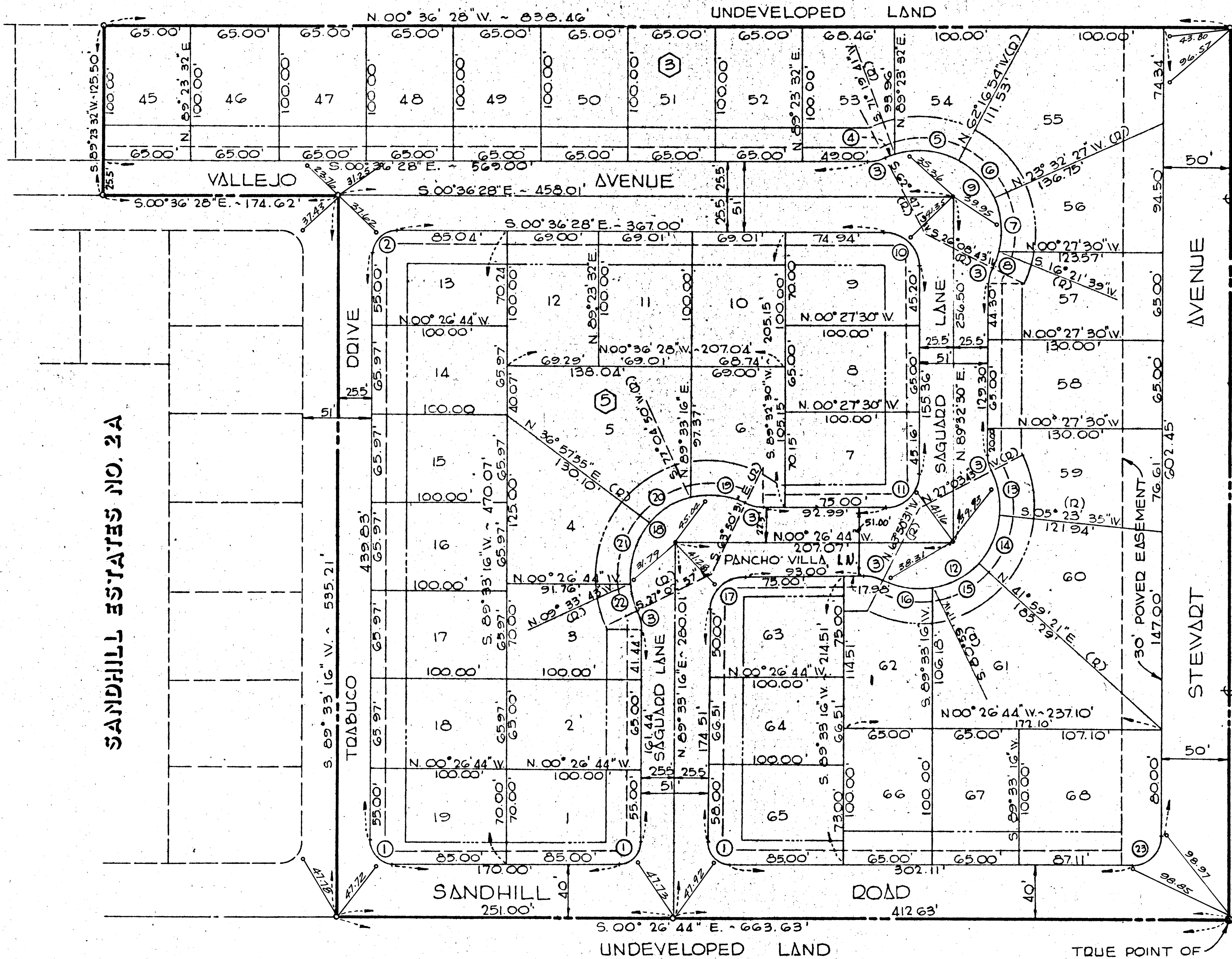


SANDHILL ESTATES UNIT NO. 2 B

A PORTION OF THE E 1/2 OF THE S.W. 1/4 OF SECTION 31, T. 20 S., R. 62 E. M.D.M.
CITY OF LAS VEGAS COUNTY OF CLARK STATE OF NEVADA

SCALE: 1" = 50'



SURVEYOR'S CERTIFICATE

I, KAY L. ADAMS, A DULY REGISTERED LAND SURVEYOR IN THE STATE OF NEVADA, DO HEREBY CERTIFY THAT THIS MAP IS A TRUE AND ACCURATE PLAT OF THE LAND SURVEYED UNDER MY DIRECT SUPERVISION AT THE INSTANCE OF P.B.S. CORPORATION, A CALIFORNIA CORPORATION AND LAID OUT INTO LOTS, BLOCKS, STREETS AND EASEMENTS AND SAID LOTS, BLOCKS, STREETS AND EASEMENTS HAVE BEEN DEFINITELY ESTABLISHED AND PERPETUATED IN STRICT ACCORDANCE WITH THE LAW AS SHOWN HEREON; THAT SAID LOTS, BLOCKS, STREETS AND EASEMENTS ARE SITUATED WHOLLY WITHIN THAT PORTION OF THE E 1/2 OF THE S.W. 1/4 OF SEC. 31, T. 20 S., R. 62 E., M.D.M., WHOLLY WITHIN THE CITY OF LAS VEGAS, COUNTY OF CLARK, STATE OF NEVADA DESCRIBED AS FOLLOWS: BEGINNING AT THE CENTER 1/4 CORNER OF SAID SECTION 31, THENCE S. 00° 26' 44" E. 663.63 FEET TO A POINT AT THE N.E. CORNER OF SANDHILL ESTATES UNIT NO. 2A SUBDIVISION, AS RECORDED IN BOOK 17 OF PLATS, PAGE 24, CLARK COUNTY NEVADA OFFICIAL RECORDS; THENCE ALONG THE NORTHERLY BNDRY. OF SAID SUBDIVISION S. 89° 33' 16" W. 535.21 FEET; THENCE S. 00° 36' 28" E. 174.62 FEET; THENCE S. 89° 23' 32" W. 125.50 FEET TO THE N.W. CORNER OF SAID SUBDIVISION; THENCE DEPARTING N00° 36' 28" W. 638.46 FEET TO A POINT ON THE EAST-WEST CENTERED SECTION LINE OF SAID SECTION 31; THENCE ALONG THE SAID EAST-WEST CENTERED SECTION LINE N. 89° 32' 30" E. 662.59 FEET TO THE POINT OF BEGINNING. THAT THIS SURVEY WAS COMPLETED ON FEBRUARY 20, 1970 CONTAINING 10.5826 ACRES MORE OR LESS.

Kay L. Adams
KAY L. ADAMS
REG. LAND SURVEYOR
NEV. CERT. NO. 2050



CURVE DATA

NO.	Δ	D	L	T	CH.
1	90°00'00"	15.00'	23.56	15.00	21.21
2	89°50'16"	15.00'	23.52	14.96	21.18
3	26°36'13"	25.00'	11.61	5.91	11.50
4	06°52'22"	60.00'	8.94	4.48	8.93
5	46°23'25"	60.00'	48.58	25.71	47.76
6	38°44'27"	60.00'	40.87	21.10	39.80
7	39°54'06"	60.00'	41.78	21.78	40.95
8	09°47'04"	60.00'	10.25	5.14	10.23
9	143°21'24"	60.00'	150.12	101.16	113.92
10	20°08'58"	25.00'	39.34	25.07	35.40
11	90°00'46"	25.00'	39.28	25.01	35.36
12	143°13'12"	60.00'	149.98	100.47	113.87
13	32°27'18"	60.00'	35.99	17.46	35.53
14	36°35'46"	60.00'	38.32	19.84	37.68
15	38°59'50"	60.00'	40.84	21.25	40.05
16	35°10'18"	60.00'	36.83	19.02	36.26
17	90°00'00"	25.00'	39.27	25.00	35.36
18	143°12'26"	60.00'	149.97	100.41	113.87
19	39°04'39"	60.00'	40.92	21.29	40.13
20	40°06'55"	60.00'	42.01	21.31	41.16
21	46°31'35"	60.00'	48.72	25.80	47.40
22	17°29'14"	60.00'	18.51	9.23	18.24
23	90°00'46"	20.00'	31.42	20.00	28.29

LEGEND

- MON. FND.
- MON. SET
- 13 LOT NUMBER
- ③ BLOCK NUMBER
- 25' FRONT YARD SETBACK
- - - 15' SIDE YARD SETBACK
- PUBLIC UTILITY EASEMENT

OWNER'S CERTIFICATE

P.B.S. CORPORATION, A CALIFORNIA CORPORATION DOES HEREBY CERTIFY THAT IT IS THE OWNER OF THE PARCEL OF LAND IS SHOWN UPON THE PLAT OF SANDHILL ESTATES UNIT NO. 2B AND DOES HEREBY CONSENT TO THE PREPARATION AND RECORDATION OF THIS PLAT AND DOES HEREBY OFFER AND DEDICATE ALL STREETS AND EASEMENTS AS INDICATED AND OUTLINED HEREON FOR THE USE OF THE PUBLIC, FURTHER DO HEREBY GRANT AND CONVEY TO NEVADA POWER CO. AND CENTRAL TELEPHONE CO., THEIR SUCCESSORS AND ASSIGNS A PERMANENT EASEMENT AND RIGHT-OF-WAY, AS SHOWN BY THE IDEAS MARKED "UTILITY EASEMENT" ON THE WITHIN PLAT FOR THE CONSTRUCTION AND MAINTENANCE OF ELECTRICAL AND TELEPHONE POLES, LINES AND APPURTENANCES, TOGETHER WITH THE RIGHT OF ACCESS THEREON, AND THIS INCLUDES 3 FOOT EASEMENT ON ALL SIDE PROPERTY LINES FOR INGRESS AND EGRESS TO MAINTAIN SERVICES ON ANY LOT WITHIN THE TRACT. NO VEHICULAR ACCESS SHALL BE PERMITTED ALONG THE WEST BOUNDARY OF BLK. 3 FROM LOT 45 THRU AND INCLUDING LOT 55 AND ALONG THE NORTHERLY BOUNDARY OF BLK. 3 FROM LOT 55 THRU 61 AND LOT 68. DATED THIS 26TH DAY OF JANUARY 1970 P.B.S. CORPORATION.

John Parker
JOHN PARKER, PRESIDENT

Glen Brangle
GLEN BRANGLE, ASST. SECRETARY

BASIS OF BEARING

N. 00° 26' 44" W. BEING THE CENTERED SECTION LINE OF SECTION 31, T. 20 S., R. 62 E. M.D.M. NEVADA AS SHOWN BY A MAP ON FILE IN THE OFFICE OF THE CLARK COUNTY, RECORDED AS PAGE 5, BOOK 7 OF PLATS, CLARK COUNTY NEVADA OFFICIAL RECORDS.

ACKNOWLEDGEMENT

STATE OF CALIFORNIA
COUNTY OF ORANGE
ON THIS 26TH DAY OF JANUARY 1970, PERSONALLY APPEARED BEFORE ME *June P. Huff*, A NOTARY PUBLIC IN AND FOR SAID COUNTY AND STATE JOHN PARKER, PRESIDENT, AND GLEN BRANGLE, ASST. SECRETARY, OF P.B.S. CORPORATION KNOWN TO ME TO BE THE AUTHORIZED AGENTS OF P.B.S. CORPORATION, A CALIFORNIA CORPORATION THAT EXECUTED THE WITHIN INSTRUMENT AND KNOWN TO ME TO BE THE PERSONS WHO AFFIXED THEIR NAMES THERETO AS SUCH AGENTS AND THAT THEY ACKNOWLEDGED TO ME THAT THEY EXECUTED THE SAME FOR AND ON BEHALF OF SUCH CORPORATION AND UPON OATH THEY DID DEPOSE AND SAY THAT THEY ARE THE AGENTS OF SAID CORPORATION AND THAT THEIR SIGNATURES TO SAID INSTRUMENT WAS MADE BY THEM AS SUCH AGENTS AND THAT SAID CORPORATION EXECUTED THE SAID INSTRUMENT AND THAT EACH, ALL AND EVERYONE OF SAID ACTS OF EXECUTION WERE FREELY AND VOLUNTARILY DONE FOR THE USES AND PURPOSES THEREIN MENTIONED, AND THAT THE SEAL AFFIXED TO SAID INSTRUMENT IS THE CORPORATE SEAL OF SAID CORPORATION.

NOTARY PUBLIC IN AND FOR SAID COUNTY AND STATE
MY COMMISSION EXPIRES AUGUST 24, 1972
June P. Huff
JUNE P. HUFF

APPROVAL
IN CONFORMITY WITH THE TENTATIVE MAP APPROVED THIS 25TH DAY OF NOVEMBER 1968, BY THE PLANNING COMMISSION, CITY OF LAS VEGAS, COUNTY OF CLARK, STATE OF NEVADA.
Don J. Saylog
DON J. SAYLOG, SECRETARY

CITY ENGINEER'S CERTIFICATE

I, D.P. SAUER, CITY ENGINEER OF THE CITY OF LAS VEGAS, COUNTY OF CLARK, STATE OF NEVADA DO HEREBY CERTIFY THAT I HAVE EXAMINED THE FINAL MAP OF SANDHILL ESTATES UNIT NO. 2B THAT THE SUBDIVISION SHOWN HEREON IS SUBSTANTIALLY THE SAME AS IT APPEARED ON THE TENTATIVE MAP AND ANY APPROVED ALTERATIONS THEREOF THAT ALL PROVISIONS OF THE PLANNING AND ZONING ACT OF THE STATE OF NEVADA AND ANY LOCAL ORDINANCES APPLICABLE AT THE TIME OF APPROVAL OF THE TENTATIVE MAP HAS BEEN COMPLIED WITH AND THAT I AM SATISFIED THIS MAP IS TECHNICALLY CORRECT.
DATED THIS 4TH DAY OF February, 1970
D.P. Sauer
D.P. SAUER
DPE. NO. 396

MONUMENT TIE MAP

Note: All ties are lead and tack in top of curb.

NO. 11851
RECORDED AT THE REQUEST OF
OF
P.B.S. CORPORATION
DATE 3-17-70 AT 9:01 A.M.
BOOK 12 PAGE 27
OF PLATS
OFFICIAL RECORDS BLK. NO. 15
CLARK COUNTY NEV. RECORDS
RAUL E. HORN, RECORDER
FEE 11.25 G.I. DEPUTY E.M.