

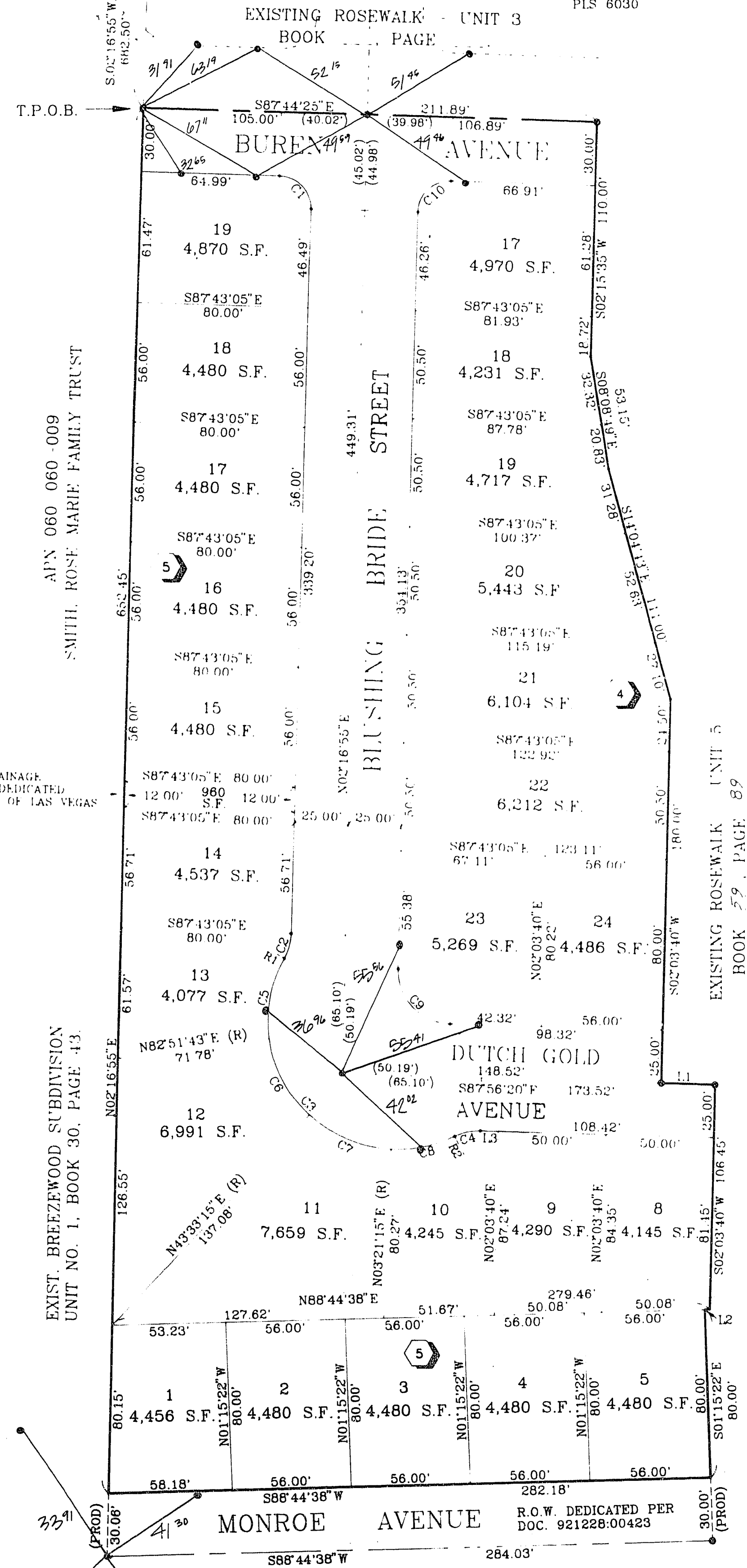
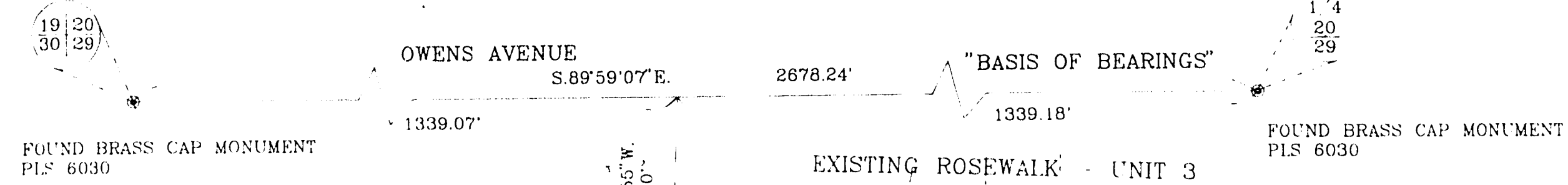
940203

11322

ROSEWALK - UNIT 6

MONUMENT TIE MAP

A PORTION OF THE NE1/4 OF THE NW1/4 OF SECTION 29, T.20S., R.62E., M.D.M.,
CITY OF LAS VEGAS, CLARK COUNTY, NEVADA.



I, STEPHEN P. GURLIDES, A PROFESSIONAL LAND SURVEYOR IN THE STATE OF NEVADA, DO HEREBY CERTIFY THAT THE MONUMENTS HAVE BEEN SET AND THE TIE DISTANCE ESTABLISHED AS SHOWN HEREON. THIS SURVEY WAS COMPLETED ON

Stephen P. Gurlides
STEPHEN P. GURLIDES
NEVADA CERTIFICATION NO. 9105

8/3/94

COURSE TABLE

LINE	DIRECTION	DISTANCE
L1	S87°56'20\"/>	

RADIAL LINE TABLE

LINE	DIRECTION
R1 PKC	N59°38'45\"/>

CURVE TABLE

CURVE	RADIUS	LENGTH	TANGENT	DELTA
C1	15.00'	23.57'	15.01'	90°01'19\"/>

NOTE
PURSUANT TO NRS 278.371 ALL REAR LOT CORNERS SHALL BE SET WITH A NAIL AND TAG "PLS 9105" ON BLOCK WALLS AND ALL FRONT OR SIDE LOT CORNERS ADJOINING RIGHT OF WAY SHALL BE MARKED BY THE SAWCUTTING OF THE BACK OF CURBS ON THE PROLONGATION OF THE PROPERTY LINES.

1" = 40'

LEGEND

- T.P.O.B. TRUE POINT OF BEGINNING
- 2 LOT NUMBER / TOTAL LOTS = 25
- Ⓛ BLOCK NUMBER
- L4 COURSE NUMBER
- C5 CURVE NUMBER
- FOUND TYPE III MONUMENT, PLS 9105 (UNLESS OTHERWISE INDICATED)
- SET TYPE III MONUMENT, PLS 9105
- (R) RADIAL LINE
- R2 RADIAL BEARING NUMBER

ACT	DATE	BY	REVISION

APN 060-130-001
(EXIST. VILLA BOREGA MOBILE HOME PARK)

W.O. 4417-II-8
SHEET 2 OF 2

BOOK 60 PAGE 26
11-6-83 058-4276-6