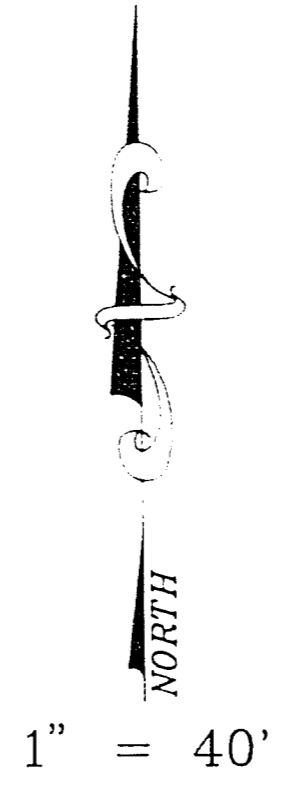
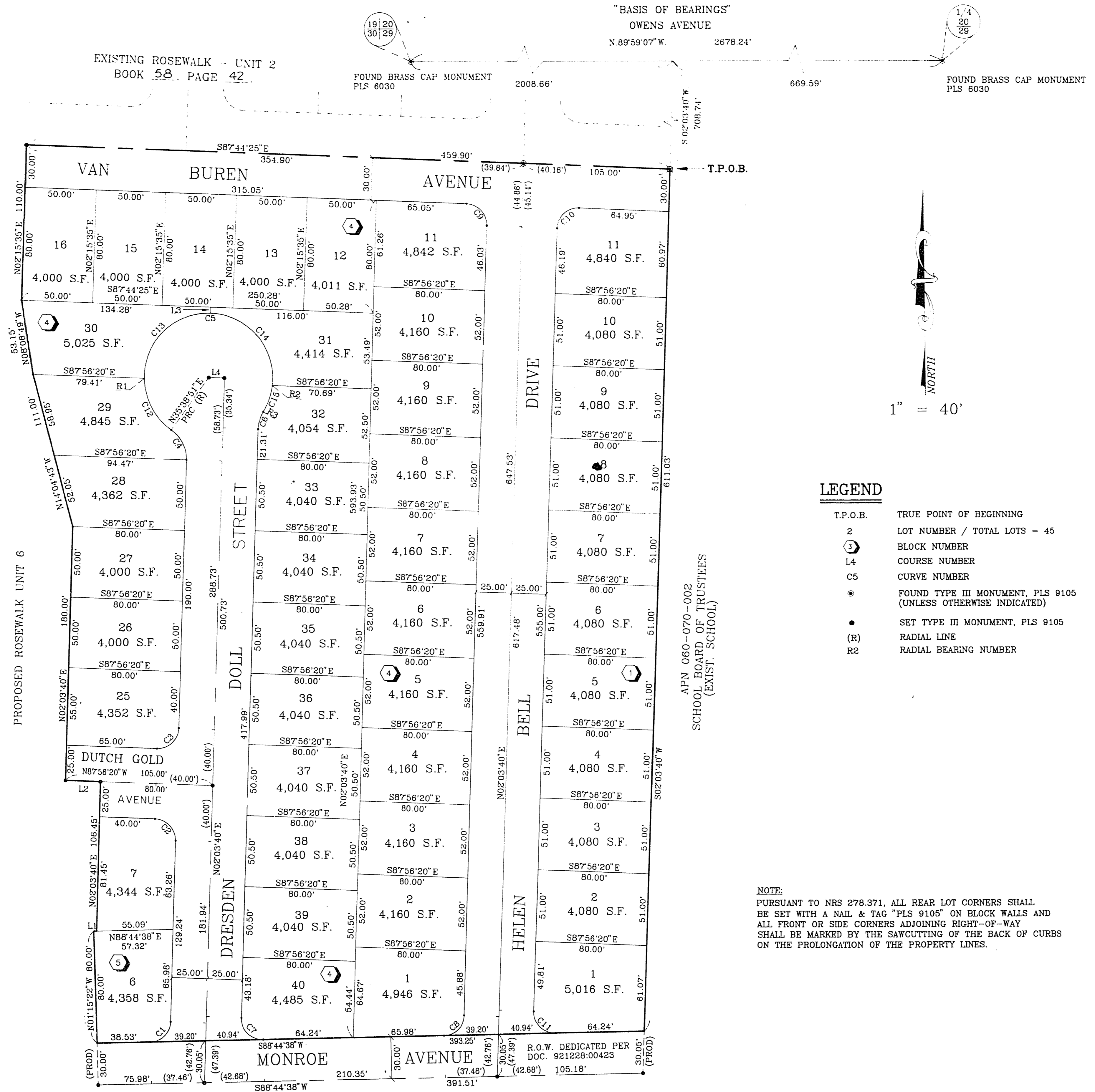


940112

00829

16-17-82

**ROSEWALK - UNIT 5**  
 A PORTION OF THE NE1/4 OF THE NW1/4 OF SECTION 29, T.20 S., R.62 E., M.D.M.,  
 CITY OF LAS VEGAS, CLARK COUNTY, NEVADA.



**COURSE TABLE**

LINE	DIRECTION	DISTANCE
L1	N88°44'38" E	2.23'
L2	N87°56'20" W	25.00'
L3 (R)	N02°03'40" E	4.24'
L4	S87°56'20" E	11.00'

**RADIAL LINE TABLE**

LINE	DIRECTION
R1	S89°24'45" W
R2	S82°42'02" E
R3 PRC	S57°51'00" E

**CURVE TABLE**

CURVE	RADIUS	LENGTH	TANGENT	DELTA
C1	15.00'	22.69'	14.16'	86°40'58"
C2	15.00'	23.56'	15.00'	90°00'00"
C3	15.00'	23.56'	15.00'	90°00'00"
C4	25.00'	24.62'	13.41'	56°24'50"
C5	45.50'	211.84'	48.37'	266°30'10"
C6	25.00'	13.13'	6.72'	30°05'20"
C7	15.00'	24.43'	15.89'	93°19'02"
C8	15.00'	22.69'	14.16'	86°40'58"
C9	15.00'	23.51'	14.95'	89°48'05"
C10	15.00'	23.61'	15.05'	90°11'55"
C11	15.00'	24.43'	15.89'	93°19'02"
C12	45.50'	42.70'	23.07'	53°45'54"
C13	45.50'	73.57'	47.05'	92°38'55"
C14	45.50'	75.63'	49.86'	95°14'18"
C15	45.50'	19.73'	10.02'	24°51'02"

**LEGEND**

- T.P.O.B. TRUE POINT OF BEGINNING
- 2 LOT NUMBER / TOTAL LOTS = 45
- 3 BLOCK NUMBER
- L4 COURSE NUMBER
- C5 CURVE NUMBER
- FOUND TYPE III MONUMENT, PLS 9105 (UNLESS OTHERWISE INDICATED)
- SET TYPE III MONUMENT, PLS 9105
- (R) RADIAL LINE
- R2 RADIAL BEARING NUMBER

**NOTE:**  
 PURSUANT TO NRS 278.371, ALL REAR LOT CORNERS SHALL BE SET WITH A NAIL & TAG "PLS 9105" ON BLOCK WALLS AND ALL FRONT OR SIDE CORNERS ADJOINING RIGHT-OF-WAY SHALL BE MARKED BY THE SAWCUTTING OF THE BACK OF CURBS ON THE PROLONGATION OF THE PROPERTY LINES.

ACT	DATE	BY	REVISION

APN 060-130-001  
 (EXIST. VILLA BOREGA MOBILE HOME PARK)

W.O. 4417-II-5  
 SHEET 2 OF 2

T.Z.

BOOK 59 PAGE 89  
 4276-5