

94012

00829

MONUMENT TIE MAP

ROSEWALK - UNIT 5

A PORTION OF THE NE1/4 OF THE NW1/4 OF SECTION 29, T.20 S., R.62 E., M.D.M., CITY OF LAS VEGAS, CLARK COUNTY, NEVADA.

I, STEPHEN P. GURLIDES, A PROFESSIONAL LAND SURVEYOR IN THE STATE OF NEVADA, DO HEREBY CERTIFY THAT THE MONUMENTS HAVE BEEN SET AND THE TIE DISTANCE ESTABLISHED AS SHOWN HEREON. THIS SURVEY WAS COMPLETED ON

*Stephen P. Gurlides*

STEPHEN P. GURLIDES  
NEVADA CERTIFICATION NO. 9105

8/3/94

COURSE TABLE

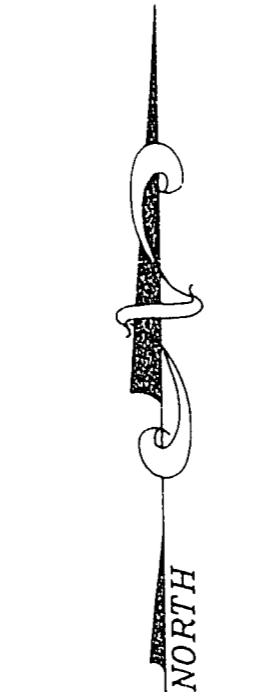
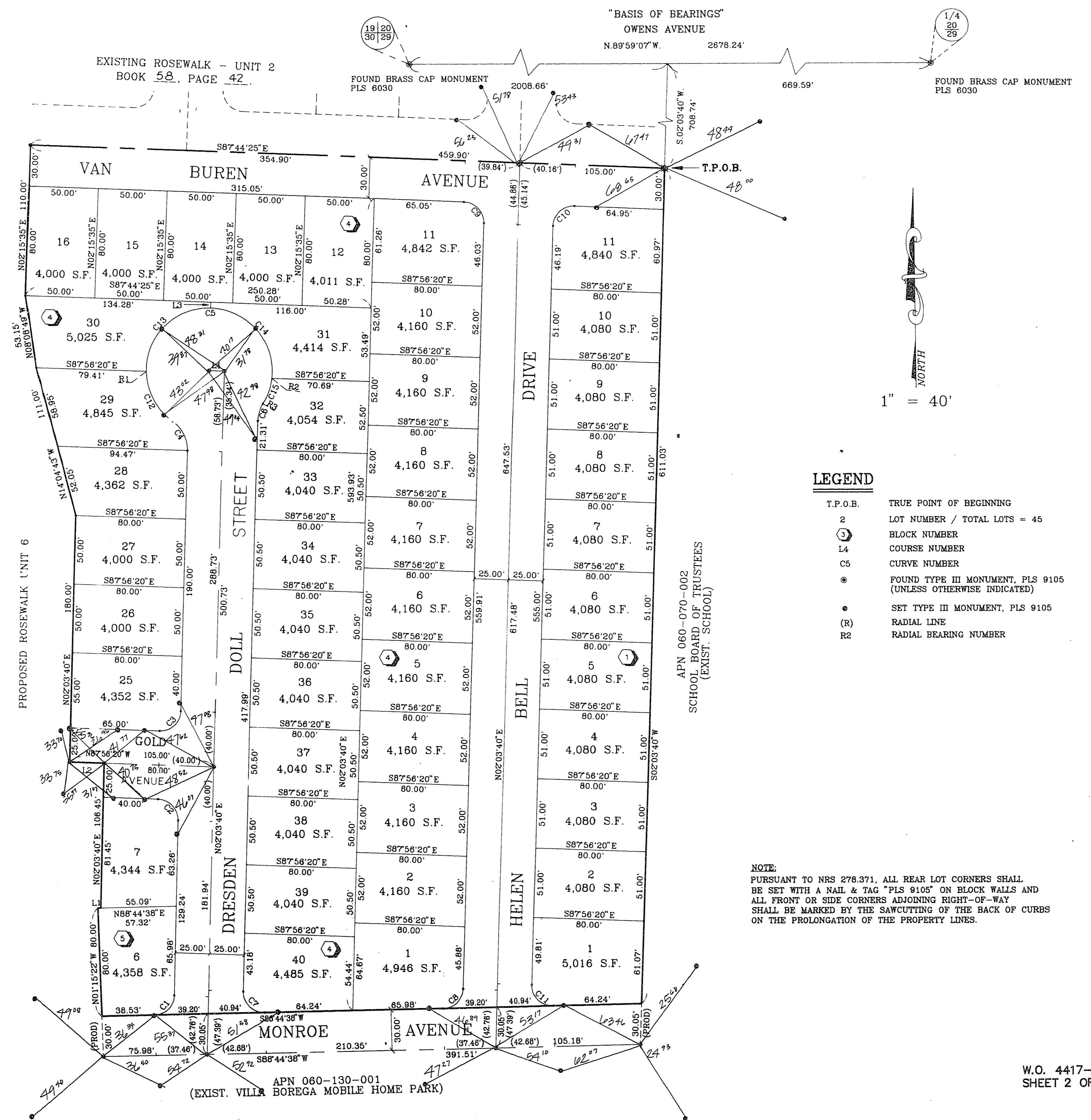
LINE	DIRECTION	DISTANCE
L1	N89°44'38"E	2.23'
L2	N87°56'20"W	25.00'
L3 (R)	N02°03'40"E	4.24'
L4	S87°56'20"E	11.00'

RADIAL LINE TABLE

LINE	DIRECTION
R1	S89°24'45"W
R2	S82°42'02"E
R3 PRC	S57°51'00"E

CURVE TABLE

CURVE	RADIUS	LENGTH	TANGENT	DELTA
C1	15.00'	22.69'	14.18'	86°40'58"
C2	15.00'	23.56'	15.00'	90°00'00"
C3	15.00'	23.56'	15.00'	90°00'00"
C4	25.00'	24.82'	13.41'	58°24'50"
C5	45.50'	211.84'	48.37'	266°30'10"
C6	25.00'	13.13'	8.72'	30°05'20"
C7	15.00'	24.43'	15.89'	93°19'02"
C8	15.00'	22.89'	14.18'	86°40'58"
C9	15.00'	23.51'	14.95'	89°48'05"
C10	15.00'	23.81'	15.05'	90°11'55"
C11	15.00'	24.43'	15.89'	93°19'02"
C12	45.50'	42.70'	23.07'	53°45'54"
C13	45.50'	73.57'	47.65'	92°38'55"
C14	45.50'	75.83'	49.86'	95°14'18"
C15	45.50'	19.73'	10.02'	24°51'02"



1" = 40'

LEGEND

- T.P.O.B. TRUE POINT OF BEGINNING
- 2 LOT NUMBER / TOTAL LOTS = 45
- 5 BLOCK NUMBER
- L4 COURSE NUMBER
- C5 CURVE NUMBER
- FOUND TYPE III MONUMENT, PLS 9105 (UNLESS OTHERWISE INDICATED)
- SET TYPE III MONUMENT, PLS 9105
- (R) RADIAL LINE
- R2 RADIAL BEARING NUMBER

NOTE:  
PURSUANT TO NRS 278.371, ALL REAR LOT CORNERS SHALL BE SET WITH A NAIL & TAG "PLS 9105" ON BLOCK WALLS AND ALL FRONT OR SIDE CORNERS ADJOINING RIGHT-OF-WAY SHALL BE MARKED BY THE SAWCUTTING OF THE BACK OF CURBS ON THE PROLONGATION OF THE PROPERTY LINES.

ACT	DATE	BY	REVISION

APN 060-130-001  
(EXIST. VILLA BOREGA MOBILE HOME PARK)

W.O. 4417-II-5  
SHEET 2 OF 2

T.Z.

BOOK 59 PAGE 89  
11-6-84  
058-4276-5