

940203

16-17-84

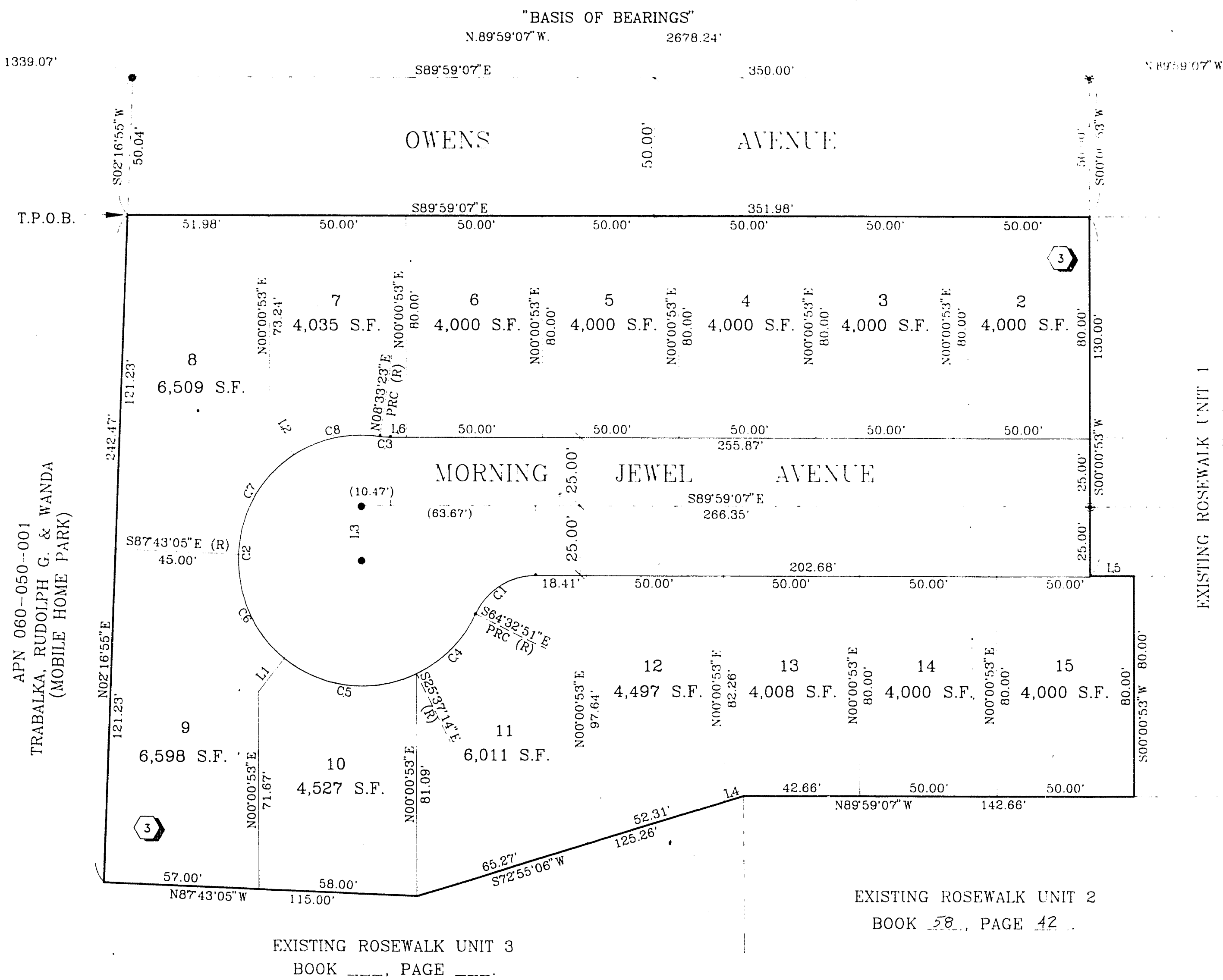
01331

# ROSEWALK - UNIT 4

A PORTION OF THE NE1/4 OF THE NW1/4 OF SECTION 29 T.20 S., R.62 E., M.D.M.,  
CITY OF LAS VEGAS, CLARK COUNTY, NEVADA.

19.20'  
30.29'  
N 89°59'07"W  
1339.07'  
FOUND BRASS CAP MONUMENT  
PLS 6030

1.4  
20  
29  
FOUND BRASS CAP MONUMENT  
PLS 6030



COURSE TABLE

LINE	DIRECTION	DISTANCE
L1 (R)	N38°29'48"E	16.00'
L2 (R)	N37°09'42"W	16.00'
L3	N00°00'53"E	19.72'
L4	S72°55'06"W	7.68'
L5	S89°59'07"E	15.73'
L6	S89°59'07"E	5.87'

CURVE TABLE

CURVE	RADIUS	LENGTH	TANGENT	DELTA
C1	25.00'	28.17'	15.79'	84°33'44"
C2	45.50'	201.00'	61.37'	253°06'14"
C3	25.00'	3.73'	1.87'	08°32'30"
C4	45.50'	30.91'	16.08'	38°55'37"
C5	45.50'	50.92'	28.50'	64°07'02"
C6	45.50'	42.71'	23.08'	53°47'06"
C7	45.50'	43.32'	23.46'	54°33'23"
C8	45.50'	33.13'	17.34'	41°43'05"

1" = 30'

### LEGEND

- T.P.O.B. TRUE POINT OF BEGINNING
- 2 LOT NUMBER / TOTAL LOTS = 14
- ③ BLOCK NUMBER
- L4 COURSE NUMBER
- C5 CURVE NUMBER
- FOUND TYPE III MONUMENT, PLS 9105 (UNLESS OTHERWISE INDICATED)
- SET TYPE III MONUMENT, PLS 9105
- (R) RADIAL LINE

ACT	DATE	BY	REVISION

NOTE:  
PURSUANT TO NRS 278.371 ALL REAR LOT CORNERS SHALL BE SET WITH A NAIL AND TAG "PLS 9105" ON BLOCK WALLS AND ALL FRONT OR SIDE LOT CORNERS ADJOINING RIGHT-OF-WAY SHALL BE MARKED BY THE SAWCUTTING OF THE BACK OF CURBS ON THE PROLONGATION OF THE PROPERTY LINES.

NOTE:  
DIRECT VEHICULAR ACCESS TO OWENS AVENUE FROM THE ABUTTING LOTS IS PROHIBITED.

W.O. 4417-1-4  
SHEET 2 OF 2

BOOK 60 PAGE 25  
4276-4

T.Z.