

940203

01331

# MONUMENT TIE MAP

## ROSEWALK - UNIT 4

A PORTION OF THE NE1/4 OF THE NW1/4 OF SECTION 29 T.20 S., R.62 E., M.D.M.,  
CITY OF LAS VEGAS, CLARK COUNTY, NEVADA.

19  
30  
29  
FOUND BRASS CAP MONUMENT  
PLS 6030

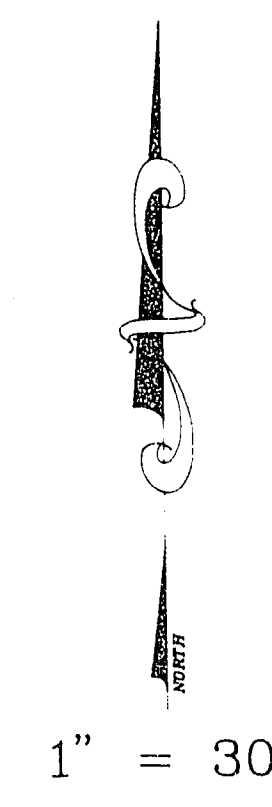
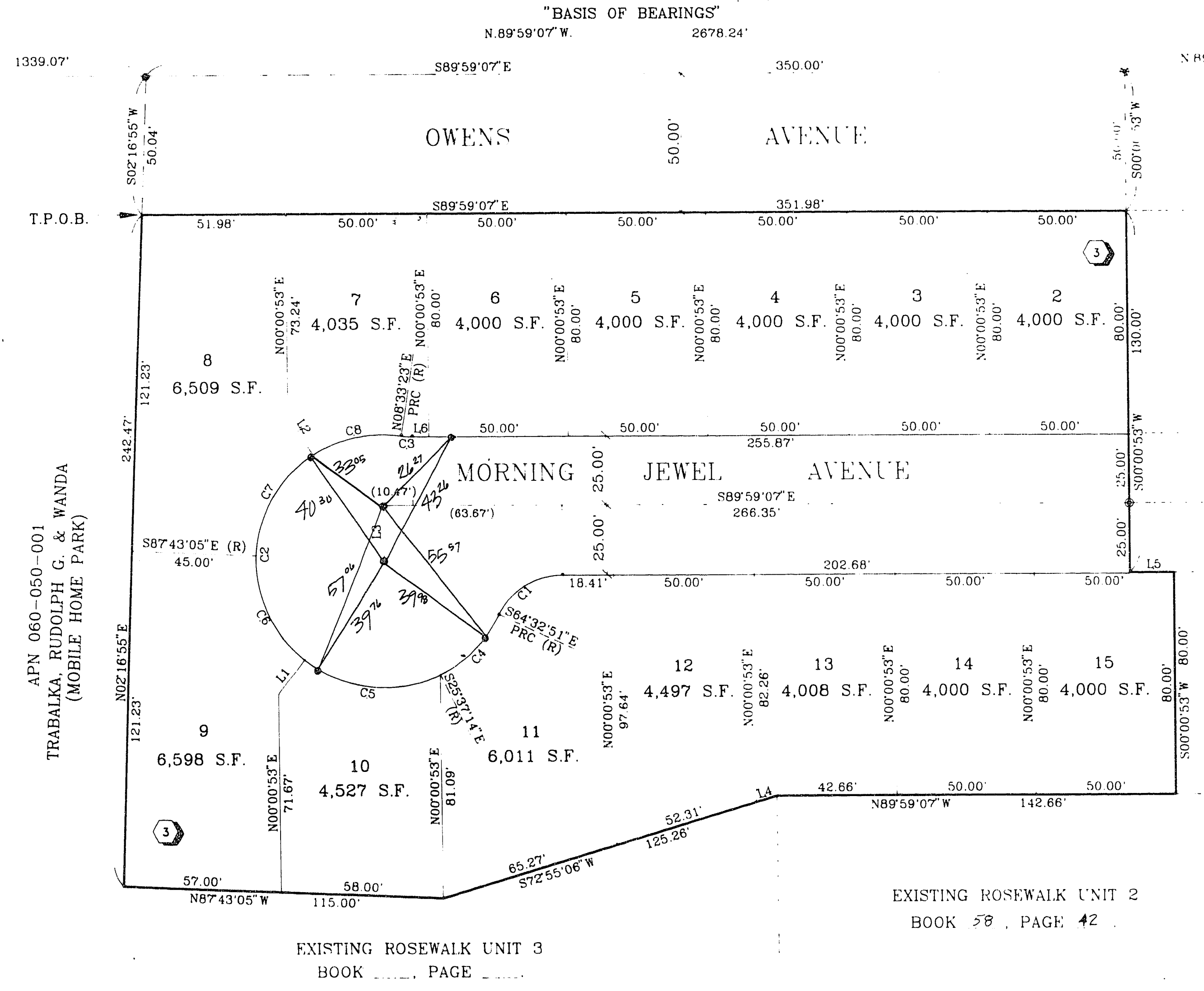
174  
20  
29  
FOUND BRASS CAP MONUMENT  
PLS 6030

COURSE TABLE

LINE	DIRECTION	DISTANCE
L1 (R)	N38°29'48"E	16.00'
L2 (R)	N33°09'42"W	16.00'
L3	N00°00'53"E	19.72'
L4	S72°55'06"W	7.68'
L5	S89°59'07"E	15.73'
L6	S89°59'07"E	5.87'

CURVE TABLE

CURVE	RADIUS	LENGTH	TANGENT	DELTA
C1	25.00'	28.17'	15.79'	64°33'44"
C2	45.50'	201.00'	61.37'	253°06'14"
C3	25.00'	3.73'	1.87'	08°32'30"
C4	45.50'	30.91'	16.08'	38°55'37"
C5	45.50'	50.92'	28.50'	64°07'02"
C6	45.50'	42.71'	23.08'	53°47'06"
C7	45.50'	43.32'	23.46'	54°33'23"
C8	45.50'	33.13'	17.34'	41°43'05"



LEGEND

T.P.O.B.	TRUE POINT OF BEGINNING
2	LOT NUMBER / TOTAL LOTS = 14
3	BLOCK NUMBER
L4	COURSE NUMBER
C5	CURVE NUMBER
⊙	FOUND TYPE III MONUMENT, PLS 9105 (UNLESS OTHERWISE INDICATED)
•	SET TYPE III MONUMENT, PLS 9105
(R)	RADIAL LINE

I, STEPHEN P. GURLIDES, A PROFESSIONAL LAND SURVEYOR IN THE STATE OF NEVADA, DO HEREBY CERTIFY THAT THE MONUMENTS HAVE BEEN SET AND THE TIE DISTANCE ESTABLISHED AS SHOWN HEREON. THIS SURVEY WAS COMPLETED ON \_\_\_\_\_

STEPHEN P. GURLIDES  
NEVADA CERTIFICATION NO. 9105

NOTE:  
DIRECT VEHICULAR ACCESS TO OWENS AVENUE FROM THE ADJUTING LOTS IS PROHIBITED.

NOTE:  
PURSUANT TO NRS 278.371 ALL REAR LOT CORNERS SHALL BE SET WITH A NAIL AND TAG "PLS 9105" ON BLOCK WALLS AND ALL FRONT OR SIDE LOT CORNERS ADJOINING RIGHT-OF-WAY SHALL BE MARKED BY THE SAWCUTTING OF THE BACK OF CURBS ON THE PROLONGATION OF THE PROPERTY LINES.

ACT	DATE	BY	REVISION

W.O. 4417-1-4  
SHEET 2 OF 2

BOOK 60 PAGE 25  
11-6-41 058-4276-4

T.Z.