

940203

01331

ROSEWALK - UNIT 4

A PORTION OF THE NE1/4 OF THE NW1/4 OF SECTION 29 T.20 S., R.62 E., M.D.M.,
CITY OF LAS VEGAS, CLARK COUNTY, NEVADA.

MONUMENTATION TIE MAP

19 20
30 29
FOUND BRASS CAP MONUMENT
PLS 6030

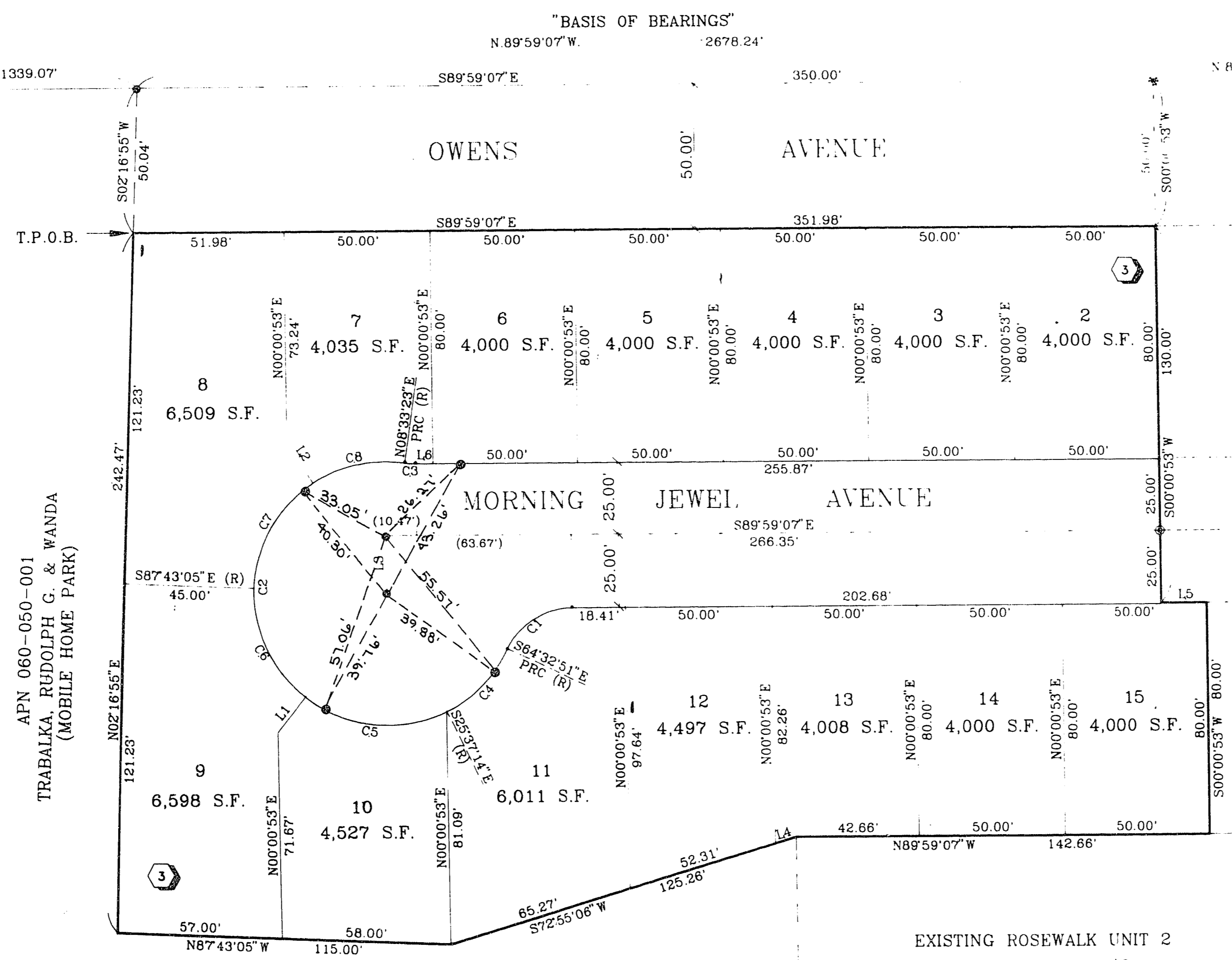
1 4
20
29
FOUND BRASS CAP MONUMENT
PLS 6030

COURSE TABLE

LINE	DIRECTION	DISTANCE
L1 (R)	N38°29'48"E	16.00'
L2 (R)	N33°09'42"W	16.00'
L3	N00°00'53"E	19.72'
L4	S72°55'06"W	7.68'
L5	S89°59'07"E	15.73'
L6	S89°59'07"E	5.87'

CURVE TABLE

CURVE	RADIUS	LENGTH	TANGENT	DELTA
C1	25.00'	28.17'	15.79'	64°33'44"
C2	45.50'	201.00'	61.37'	253°06'14"
C3	25.00'	3.73'	1.87'	08°32'30"
C4	45.50'	30.91'	16.08'	38°55'37"
C5	45.50'	50.92'	28.50'	64°07'02"
C6	45.50'	42.71'	23.08'	53°47'06"
C7	45.50'	43.32'	23.48'	54°33'23"
C8	45.50'	33.13'	17.34'	41°43'05"



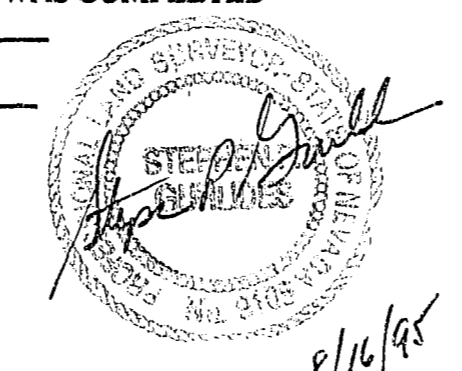
EXISTING ROSEWALK UNIT 1
BOOK 57, PAGE 70

EXISTING ROSEWALK UNIT 2
BOOK 58, PAGE 42

EXISTING ROSEWALK UNIT 3
BOOK 58, PAGE 42

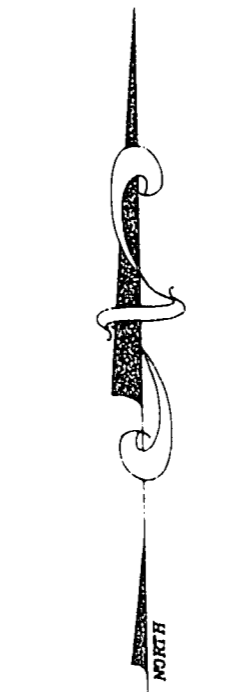
I, STEPHEN P. GURLIDES, A PROFESSIONAL LAND SURVEYOR IN THE STATE OF NEVADA, DO HEREBY CERTIFY THAT THE MONUMENTS HAVE BEEN SET AND THE TIE DISTANCE ESTABLISHED AS SHOWN HEREON. THIS SURVEY WAS COMPLETED ON August 03, 1994

STEPHEN P. GURLIDES
NEVADA CERTIFICATION NO. 9105



NOTE:
PURSUANT TO NRS 278.371 ALL REAR LOT CORNERS SHALL BE SET WITH A NAIL AND TAG "PLS 9105" ON BLOCK WALLS AND ALL FRONT OR SIDE LOT CORNERS ADJOINING RIGHT-OF-WAY SHALL BE MARKED BY THE SAWCUTTING OF THE BACK OF CURBS ON THE PROLONGATION OF THE PROPERTY LINES.

NOTE:
DIRECT VEHICULAR ACCESS TO OWENS AVENUE FROM THE ABUTTING LOTS IS PROHIBITED.



1" = 30'

LEGEND

- T.P.O.B. TRUE POINT OF BEGINNING
- 2 LOT NUMBER / TOTAL LOTS = 14
- Ⓜ BLOCK NUMBER
- L4 COURSE NUMBER
- C5 CURVE NUMBER
- FOUND TYPE III MONUMENT, PLS 9105 (UNLESS OTHERWISE INDICATED)
- SET TYPE III MONUMENT, PLS 9105
- (R) RADIAL LINE

ACT	DATE	BY	REVISION

W.O. 4417-1-4
SHEET 2 OF 2

BOOK 60 PAGE 25
11-6-86 058-4276-4

T.Z.