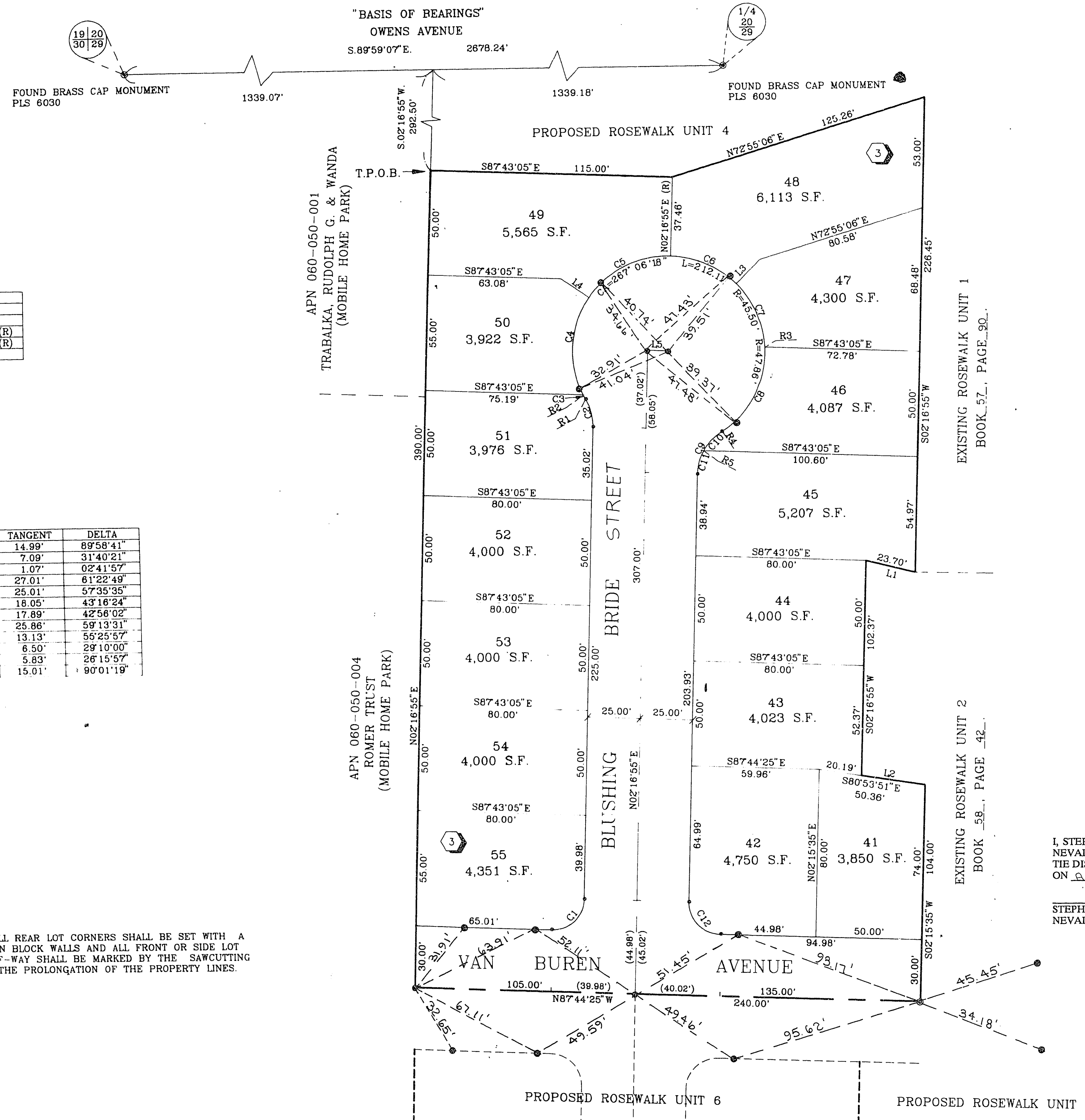


940120

01737

ROSEWALK - UNIT 3
 A PORTION OF THE NE 1/4 OF THE NW 1/4 OF SECTION 29, T.20 S., R.62 E., M.D.M.,
 CITY OF LAS VEGAS, CLARK COUNTY, NEVADA.
MONUMENTATION TIE MAP



COURSE TABLE

LINE	DIRECTION	DISTANCE
L1	N75°37'02" W	23.70'
L2	S80°53'51" E	30.17'
L3	N45°33'19" E	16.00' (R)
L4	N55°18'40" W	16.00' (R)
L5	N87°43'05" W	10.00'

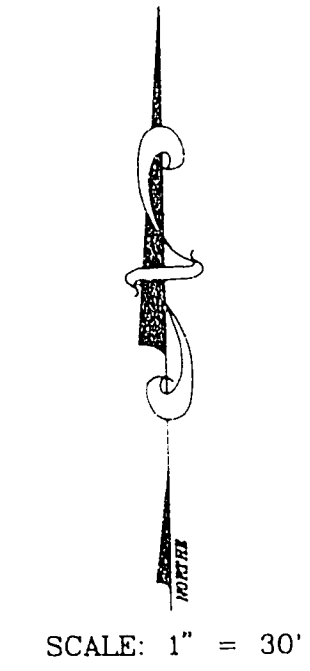
RADIAL LINE TABLE

LINE	DIRECTION
R1	S80°36'34" W PRC
R2	S63°18'31" W
R3	N86°29'21" E
R4	S32°17'08" E PRC
R5	N61°27'08" W

CURVE TABLE

CURVE	RADIUS	LENGTH	TANGENT	DELTA
C1	15.00'	23.56'	14.99'	89°58'41"
C2	25.00'	13.82'	7.09'	31°40'21"
C3	45.50'	2.14'	1.07'	02°41'59"
C4	45.50'	48.74'	27.01'	61°22'49"
C5	45.50'	45.74'	25.01'	57°35'35"
C6	45.50'	34.38'	18.05'	43°16'24"
C7	45.50'	34.09'	17.89'	42°58'02"
C8	45.50'	47.03'	25.86'	59°13'31"
C9	25.00'	24.19'	13.13'	55°25'57"
C10	25.00'	12.73'	6.50'	29°10'00"
C11	25.00'	11.46'	5.83'	26°15'57"
C12	15.00'	23.57'	15.01'	90°01'19"

NOTE:
 PURSUANT TO NRS 278.371 ALL REAR LOT CORNERS SHALL BE SET WITH A NAIL AND TAG "PLS 9105" ON BLOCK WALLS AND ALL FRONT OR SIDE LOT CORNERS ADJOINING RIGHT-OF-WAY SHALL BE MARKED BY THE SAWCUTTING OF THE BACK OF CURBS ON THE PROLONGATION OF THE PROPERTY LINES.



LEGEND

- T.P.O.B. TRUE POINT OF BEGINNING
- 2 LOT NUMBER / TOTAL LOTS = 15
- 3 BLOCK NUMBER
- L4 COURSE NUMBER
- C5 CURVE NUMBER
- FOUND TYPE III MONUMENT, PLS 9105 (UNLESS OTHERWISE INDICATED)
- SET TYPE III MONUMENT, PLS 9105
- (R) RADIAL LINE
- R2 RADIAL BEARING NUMBER

I, STEPHEN P. GURLIDES, A PROFESSIONAL LAND SURVEYOR IN THE STATE OF NEVADA, DO HEREBY CERTIFY THAT THE MONUMENTS HAVE BEEN SET AND THE TIE DISTANCE ESTABLISHED AS SHOWN HEREON. THIS SURVEY WAS COMPLETED ON August 02, 1994.

STEPHEN P. GURLIDES
 NEVADA CERTIFICATION NO. 9105

Stephen P. Gurlides
 8/16/95

ACT	DATE	BY	REVISION

11-648 BOOK 60 Page 4
 058-4276-3