

930914

00749 16-17-88

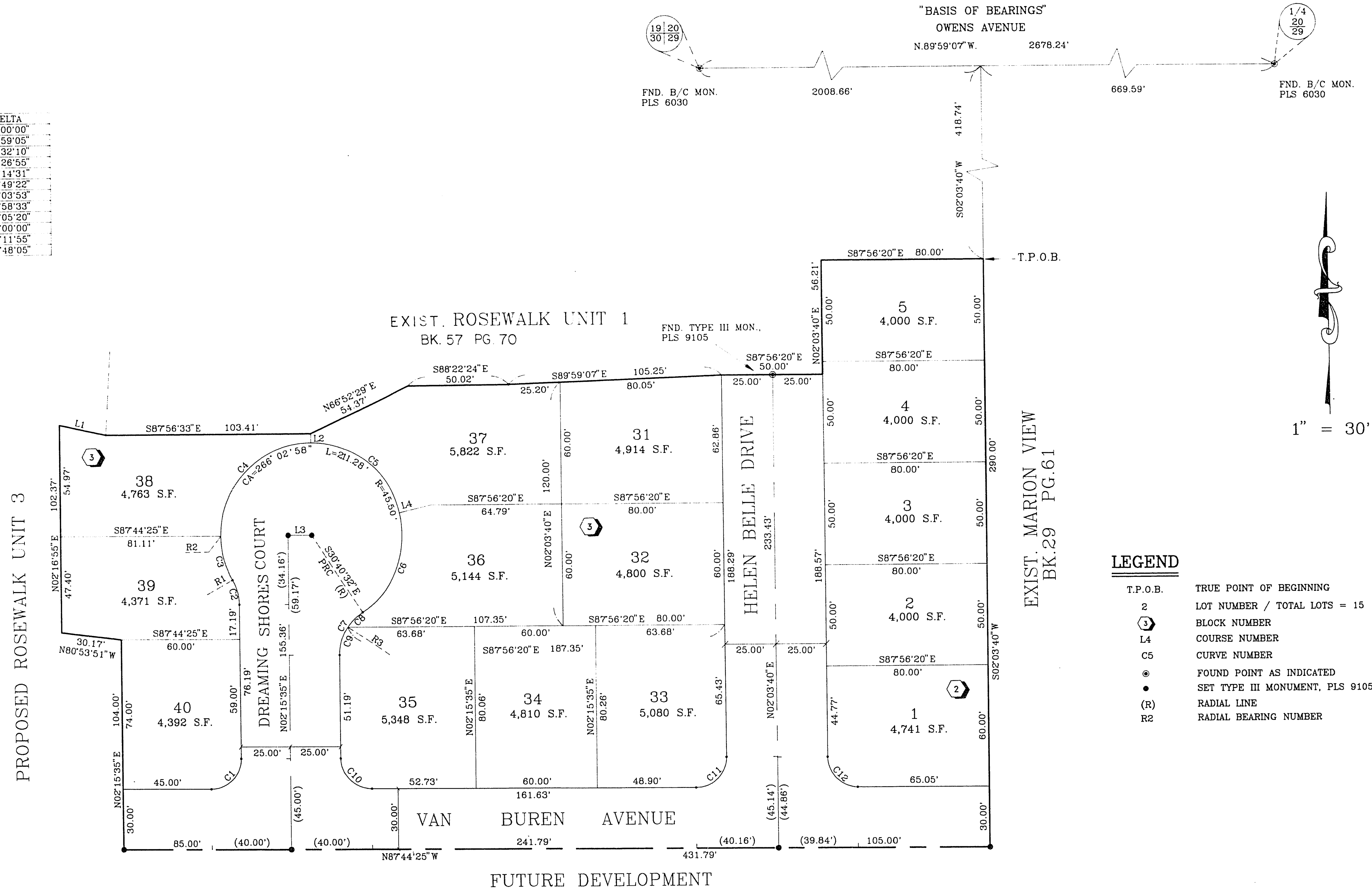
ROSEWALK - UNIT 2

A PORTION OF THE NE 1/4 OF THE NW1/4 OF SECTION 29, T.20 S., R.62 E., M.D.M.,
CITY OF LAS VEGAS, CLARK COUNTY, NEVADA.

LINE	DIRECTION	DISTANCE
L1	S75°37'02" E	23.70'
L2	N02°15'35" E (R)	4.50'
L3	S87°44'25" E	11.67'
L4	N78°30'06" E (R)	16.00'

CURVE	RADIUS	LENGTH	TANGENT	DELTA
C1	15.00'	23.56'	15.00'	90°00'00"
C2	25.00'	12.65'	6.46'	28°59'05"
C3	45.50'	22.66'	11.57'	28°32'10"
C4	45.50'	71.83'	45.86'	90°26'55"
C5	45.50'	60.55'	35.70'	76°14'31"
C6	45.50'	56.24'	32.35'	70°49'22"
C7	25.00'	24.90'	13.59'	57°03'53"
C8	25.00'	10.46'	5.31'	23°58'33"
C9	25.00'	14.44'	7.43'	33°05'20"
C10	15.00'	23.56'	15.00'	90°00'00"
C11	15.00'	23.61'	15.05'	90°11'55"
C12	15.00'	23.51'	14.95'	89°48'05"

RADIAL LINE TABLE
R1 S63°16'30" W PRC
R2 N88°11'20" W
R3 N54°39'04" W



LEGEND

T.P.O.B.	TRUE POINT OF BEGINNING
2	LOT NUMBER / TOTAL LOTS = 15
3	BLOCK NUMBER
L4	COURSE NUMBER
C5	CURVE NUMBER
●	FOUND POINT AS INDICATED
●	SET TYPE III MONUMENT, PLS 9105
(R)	RADIAL LINE
R2	RADIAL BEARING NUMBER

ACT	DATE	BY	REVISION

NOTE: PURSUANT TO NRS 278.371, ALL REAR LOT CORNERS SHALL BE SET WITH A NAIL & TAG "PLS 9105" ON BLOCK WALLS AND ALL FRONT OR SIDE CORNERS ADJOINING RIGHT-OF-WAY SHALL BE MARKED BY THE SAWCUTTING OF THE BACK OF CURBS ON THE PROLONGATION OF THE PROPERTY LINES.

W.O. 4417-2
SHEET 2 OF 2

BOOK 58 Page 42
4276-2

T.Z.