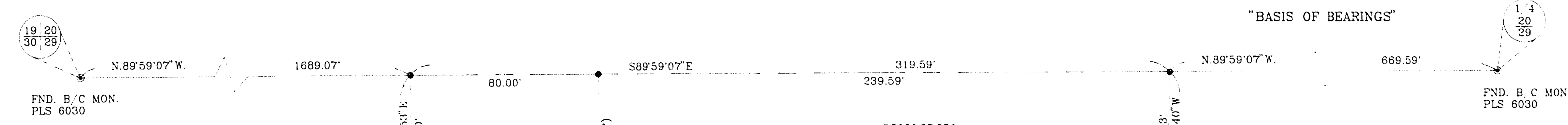


9.30730

16-17-70
01519

ROSEWALK - UNIT 1

A PORTION OF THE NE 1/4 OF THE NW1/4 OF SECTION 29, T.20 S., R.62 E., M.D.M.,
CITY OF LAS VEGAS, CLARK COUNTY, NEVADA.



COURSE TABLE

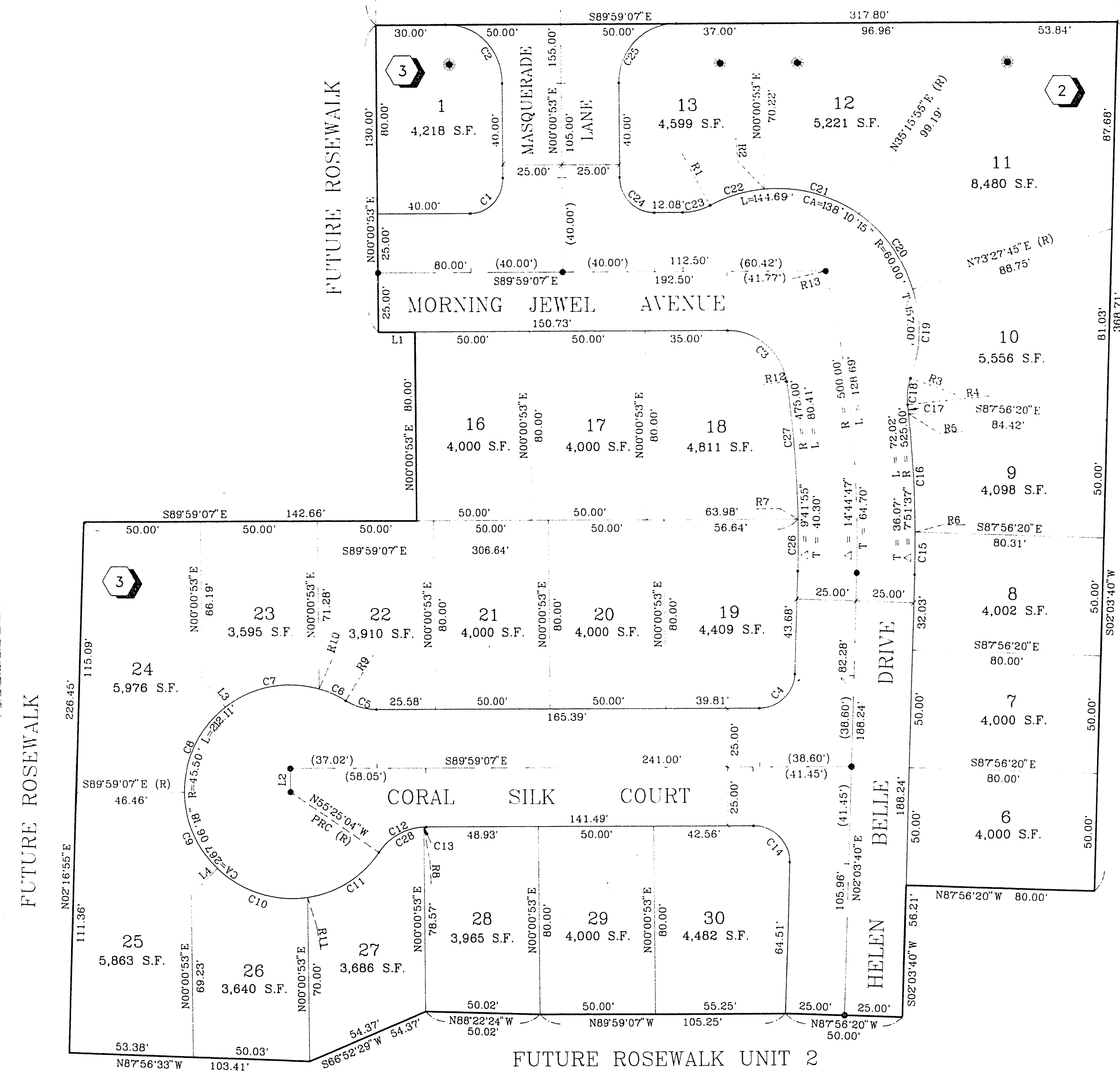
LINE	DIRECTION	DISTANCE
L1	N89°59'07"W	15.73'
L2	N00°00'53"E	10.00'
L3	N37°26'57"W (R)	16.00'
L4	N44°24'00"E (R)	16.00'

RADIAL LINE TABLE

R	BEARING	TYPE
R1	N28°03'28"W	PRC
R2	N04°50'30"W	
R3	S89°53'13"E	PRC
R4	S84°12'03"W	PRC
R5	N84°37'21"E	
R6	S89°54'01"E	
R7	N89°25'16"E	
R8	N02°26'32"W	
R9	S31°41'14"W	PRC
R10	N16°04'51"E	
R11	S08°48'44"E	
R12	N82°21'45"E	PCC
R13	N77°18'54"E	

CURVE TABLE

CURVE	RADIUS	LENGTH	TANGENT	DELTA
C1	15.00'	23.56'	15.00'	90°00'00"
C2	25.00'	39.27'	25.00'	90°00'00"
C3	25.00'	35.93'	21.87'	82°20'52"
C4	15.00'	23.03'	14.47'	87°57'13"
C5	25.00'	13.82'	7.09'	31°40'21"
C6	45.50'	12.39'	6.24'	15°36'22"
C7	45.50'	42.51'	22.95'	53°31'48"
C8	45.50'	41.72'	22.46'	52°32'10"
C9	45.50'	36.22'	19.13'	45°36'53"
C10	45.50'	42.26'	22.79'	53°12'44"
C11	45.50'	37.01'	19.60'	46°38'20"
C12	25.00'	24.19'	13.13'	52°25'57"
C13	25.00'	1.07'	0.54'	02°27'25"
C14	15.00'	24.10'	15.55'	92°02'47"
C15	525.00'	17.97'	8.99'	01°57'41"
C16	525.00'	50.19'	25.11'	05°28'38"
C17	525.00'	3.86'	1.93'	00°25'18"
C18	25.00'	11.31'	5.75'	25°54'44"
C19	60.00'	38.38'	19.87'	36°39'02"
C20	60.00'	40.00'	20.78'	38°11'50"
C21	60.00'	42.00'	21.90'	40°06'25"
C22	60.00'	24.31'	12.33'	23°12'58"
C23	25.00'	12.25'	6.25'	28°04'21"
C24	15.00'	23.56'	15.00'	90°00'00"
C25	25.00'	39.27'	25.00'	90°00'00"
C26	475.00'	21.89'	10.95'	02°38'25"
C27	475.00'	58.52'	29.30'	07°03'31"
C28	25.00'	23.11'	12.46'	52°58'32"



EXISTING MARION VIEW
BOOK 29, PAGE 61

LEGEND

T.P.O.B.	TRUE POINT OF BEGINNING
2	LOT NUMBER / TOTAL LOTS = 24
⊙	BLOCK NUMBER
L4	COURSE NUMBER
C5	CURVE NUMBER
•	FOUND POINT AS INDICATED
•	SET TYPE III MONUMENT, PLS 9105
R9	RADIAL BEARING NUMBER
(R)	RADIAL LINE

1" = 30'

ACT	DATE	BY	REVISION

NOTE: PURSUANT TO NRS 278.371, ALL REAR LOT CORNERS SHALL BE SET WITH A NAIL & TAG "PLS 9105" ON BLOCK WALLS AND ALL FRONT OR SIDE CORNERS ADJOINING RIGHT-OF-WAY SHALL BE MARKED BY THE SAWCUTTING OF THE BACK OF CURBS ON THE PROLONGATION OF THE PROPERTY LINES.

NOTE: DIRECT VEHICULAR ACCESS FROM OWENS AVENUE TO ABUTTING LOTS IS PROHIBITED

W.O. 4417-1
SHEET 2 OF 2
T.Z.

BOOK 57 PAGE 70
4276-1