

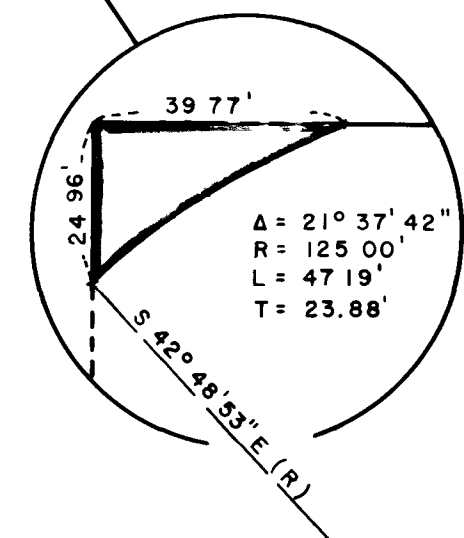
PORTION, NORTHWEST QUARTER, SECTION 31,  
TOWNSHIP 20 SOUTH, RANGE 62 EAST,  
MOUNT DIABLO MERIDIAN

J.E. KENNEY, JR.  
6-29-01  
TOTAL AREA 37.243 ACRES  
TAKE AREA 1.013 ACRES X  
REMAINDER 36.230 ACRES  
(INCLUDES 0.582 AC. IN PROPOSED ROAD)  
X INCLUDES 580 S.F. IN PROPOSED ROAD

J.E. KENNEY, JR.  
6-29-25  
TOTAL AREA 11.083 ACRES  
TAKE AREA 0.648 ACRES  
REMAINDER 10.434 ACRES

MOBILE HOME COMMUNITIES  
6-29-27  
TOTAL AREA 21.937 ACRES  
TAKE AREA 0.010 ACRES X  
REMAINDER 21.927 ACRES  
X 0.010 AC = 426.77 S.F.

PARK BONANZA EAST UNIT 2  
BOOK 15 OF PLATS PAGE 45



\* 709 668203 (1977), BK 19, PG. 55 OF PLATS  
788 747212 (1977), BK 20, PG. 72 OF PLATS  
868 827281 (1978), BK. 21, PG. 71 OF PLATS  
† 480 439559 (1974), BK 17, PG 31 OF PLATS  
563 522133 (1975), BK 17, PG 91 OF PLATS

APPROVED	DATE
<i>[Signature]</i>	8/30/82

NO.	DESCRIPTION	BY	DATE	APPROVAL
2	REVISE PROPERTY SCHEDULE	mwb	3 SEPT 82	
△	R/W FOR DRAINAGE PIPE	b b	7 NOV 73	<i>[Signature]</i>

REVISIONS  
**CITY OF LAS VEGAS NEVADA**  
DEPARTMENT OF PUBLIC WORKS  
SERVICES DIVISION

CEDAR AVENUE DRAINAGE CHANNEL  
MOJAVE ROAD TO VEGAS WASH

PARCEL NO.	GRANTOR	AREA	DOC./DATE	REMARKS
6-29-01	J.E. KENNEY, JR.	1.013 AC.	* SEE ABOVE	DEDICATED BY PLAT
6-29-25	J.E. KENNEY, JR.	0.648 AC.	† SEE ABOVE	DEDICATED BY PLAT
6-29-27	MOBILE HOME COMMUNITIES	0.010 AC.	387 346621 (1973)	426.77 S.F.

W.O. NO 6670	F BK NO	DATE	DRAWING NO
SC (H) 1" = 100'	SC (V)		115-354
DR bill burke		29 June 73	FILE NO.
APPROVED BY DIRECTOR OF PUBLIC WORKS			
<i>[Signature]</i>			
SHEET 3 OF 7			

