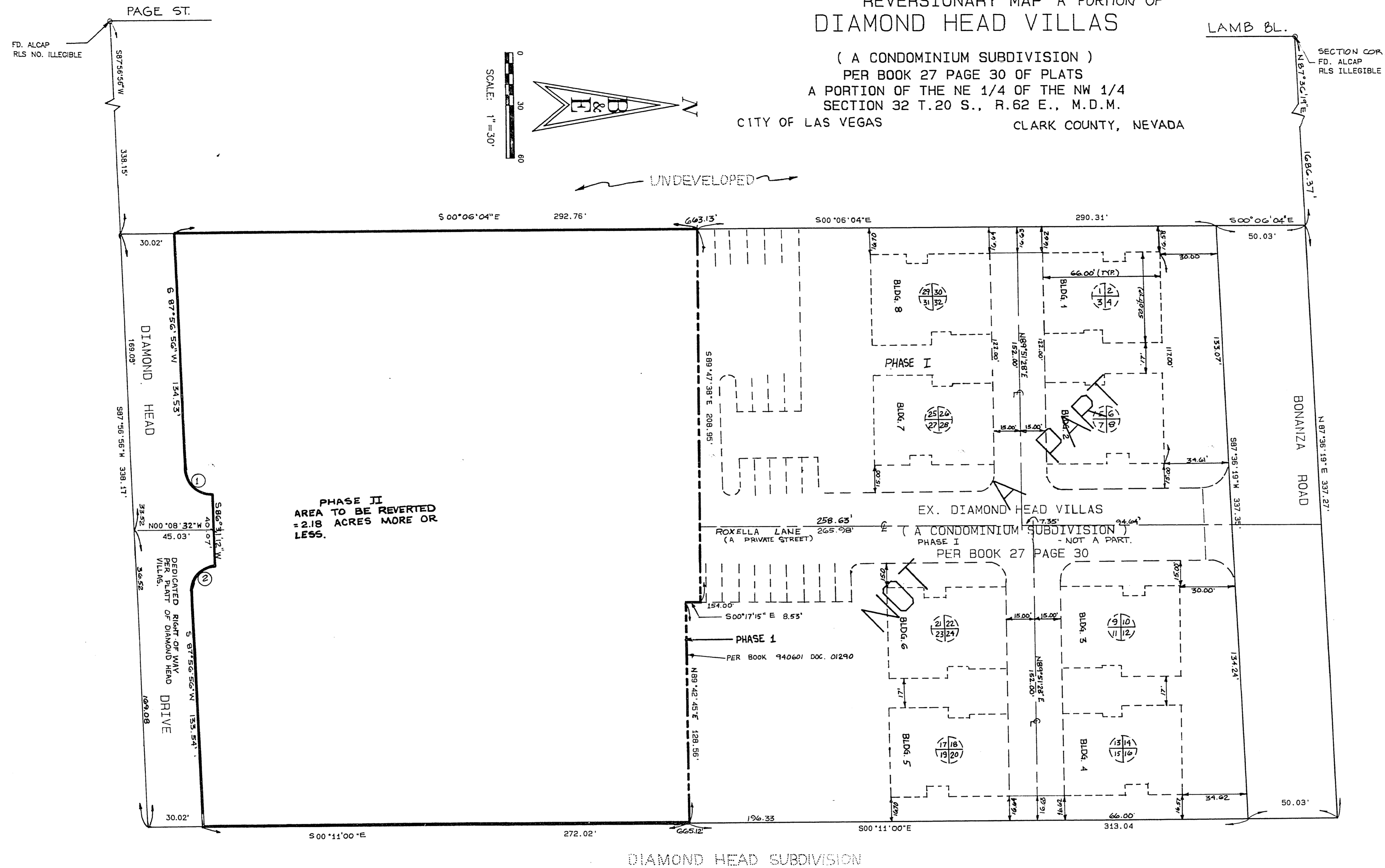


# REVERSIONARY MAP A PORTION OF DIAMOND HEAD VILLAS

( A CONDOMINIUM SUBDIVISION )  
PER BOOK 27 PAGE 30 OF PLATS  
A PORTION OF THE NE 1/4 OF THE NW 1/4  
SECTION 32 T.20 S., R.62 E., M.D.M.

CITY OF LAS VEGAS CLARK COUNTY, NEVADA



C	DELTA	RADIUS	ARC	TANGENT
①	88°05'28"	15.00'	23.05'	14.51'
②	91°54'32"	15.00'	24.06'	15.91'

NOTE:  
PHASE I SHOWN FOR  
INFORMATIONAL PURPOSES  
ONLY.

**BASIS OF BEARING**  
N 87° 36' 10" E, BEING THE BEARING OF  
THE NORTHLINE OF THE NW 1/4, AS SHOWN  
ON BOOK 27, PAGE 30 OF PLATS  
CLARK COUNTY, RECORDS.

**RECORDER'S NOTE**  
ANY SUBSEQUENT CHANGES TO THIS MAP SHOULD BE EXAMINED  
AND MAY BE DETERMINED BY REFERENCE TO THE COUNTY  
RECORDER'S CUMULATIVE MAP INDEX NRS. 278.5695

**LEGEND**

- POINTS FOUND AS SHOWN
- PHASE LINE
- - - BOUNDARY LINE
- CENTERLINE
- R/W RIGHT OF WAY
- ④⑤ UNIT NUMBERS

*Patricia D. Bull*  
14 June 14

REVERSIONARY MAP A PORTION OF DIAMOND HEAD VILLAS			
<b>B &amp; E</b> ENGINEERING CORPORATION 71 NORTH PECOS ROAD, SUITE 107 LAS VEGAS, NEVADA 89101 (702) 438-0313			
2			
1			
NO.	REVISION	BY	DATE
DES. BY	DWG. BY MJP	CHKD. BY	
SCALE 1"=30'	DATE		
JOB NO. 94010	SHT. 2	OF 2	

Book 16, Page 36 1255 Reversionary