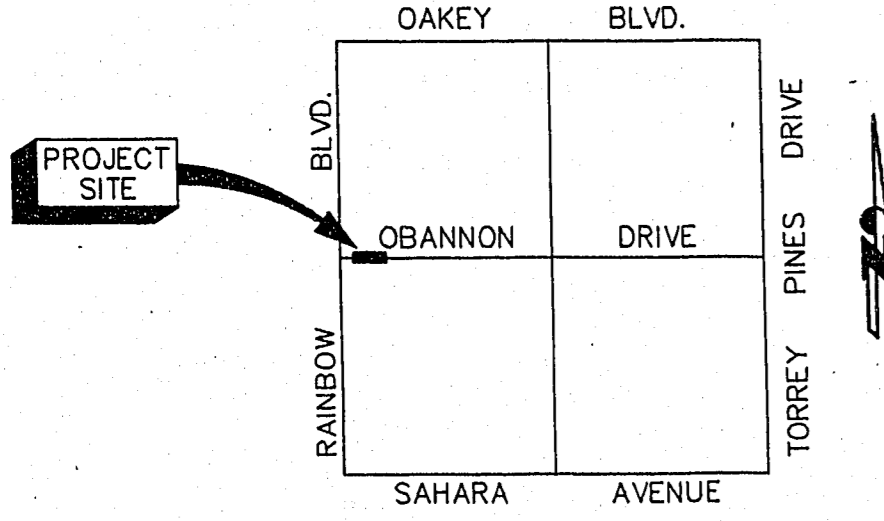
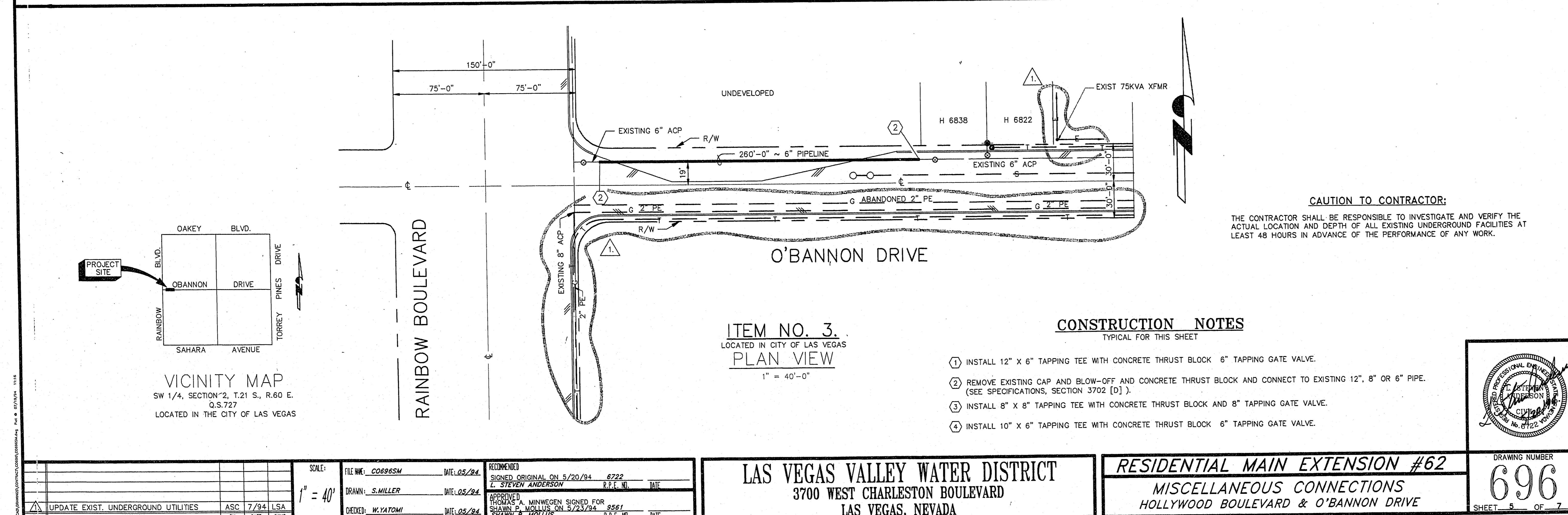


VICINITY MAP
 NW 1/4, SECTION 26, T.20 S., R.62 E.
 Q.S.534
 LOCATED IN CLARK COUNTY

ITEM NO. 5.
 LOCATED IN CLARK COUNTY
PLAN VIEW
 1" = 40'-0"



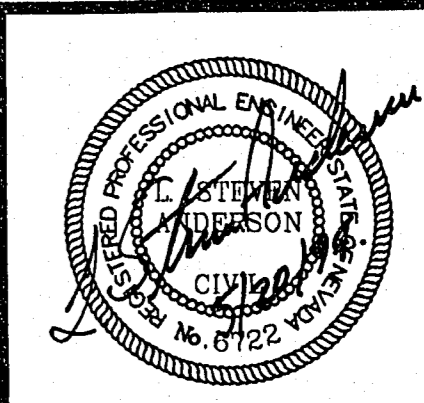
VICINITY MAP
 SW 1/4, SECTION 2, T.21 S., R.60 E.
 Q.S.727
 LOCATED IN THE CITY OF LAS VEGAS

ITEM NO. 3.
 LOCATED IN CITY OF LAS VEGAS
PLAN VIEW
 1" = 40'-0"

CAUTION TO CONTRACTOR:
 THE CONTRACTOR SHALL BE RESPONSIBLE TO INVESTIGATE AND VERIFY THE ACTUAL LOCATION AND DEPTH OF ALL EXISTING UNDERGROUND FACILITIES AT LEAST 48 HOURS IN ADVANCE OF THE PERFORMANCE OF ANY WORK.

CONSTRUCTION NOTES
 TYPICAL FOR THIS SHEET

- ① INSTALL 12" X 6" TAPPING TEE WITH CONCRETE THRUST BLOCK 6" TAPPING GATE VALVE.
- ② REMOVE EXISTING CAP AND BLOW-OFF AND CONCRETE THRUST BLOCK AND CONNECT TO EXISTING 12", 8" OR 6" PIPE. (SEE SPECIFICATIONS, SECTION 3702 [D]).
- ③ INSTALL 8" X 8" TAPPING TEE WITH CONCRETE THRUST BLOCK AND 8" TAPPING GATE VALVE.
- ④ INSTALL 10" X 6" TAPPING TEE WITH CONCRETE THRUST BLOCK 6" TAPPING GATE VALVE.



| | | | |
|-------------------------------------|------|-----|-------|
| REVISION | DATE | BY | CHK'D |
| UPDATE EXIST. UNDERGROUND UTILITIES | 7/94 | ASC | LSA |

LAS VEGAS VALLEY WATER DISTRICT
 3700 WEST CHARLESTON BOULEVARD
 LAS VEGAS, NEVADA

RESIDENTIAL MAIN EXTENSION #62
 MISCELLANEOUS CONNECTIONS
 HOLLYWOOD BOULEVARD & O'BANNON DRIVE

DRAWING NUMBER
696
 SHEET 5 OF 7

26-77

565-238