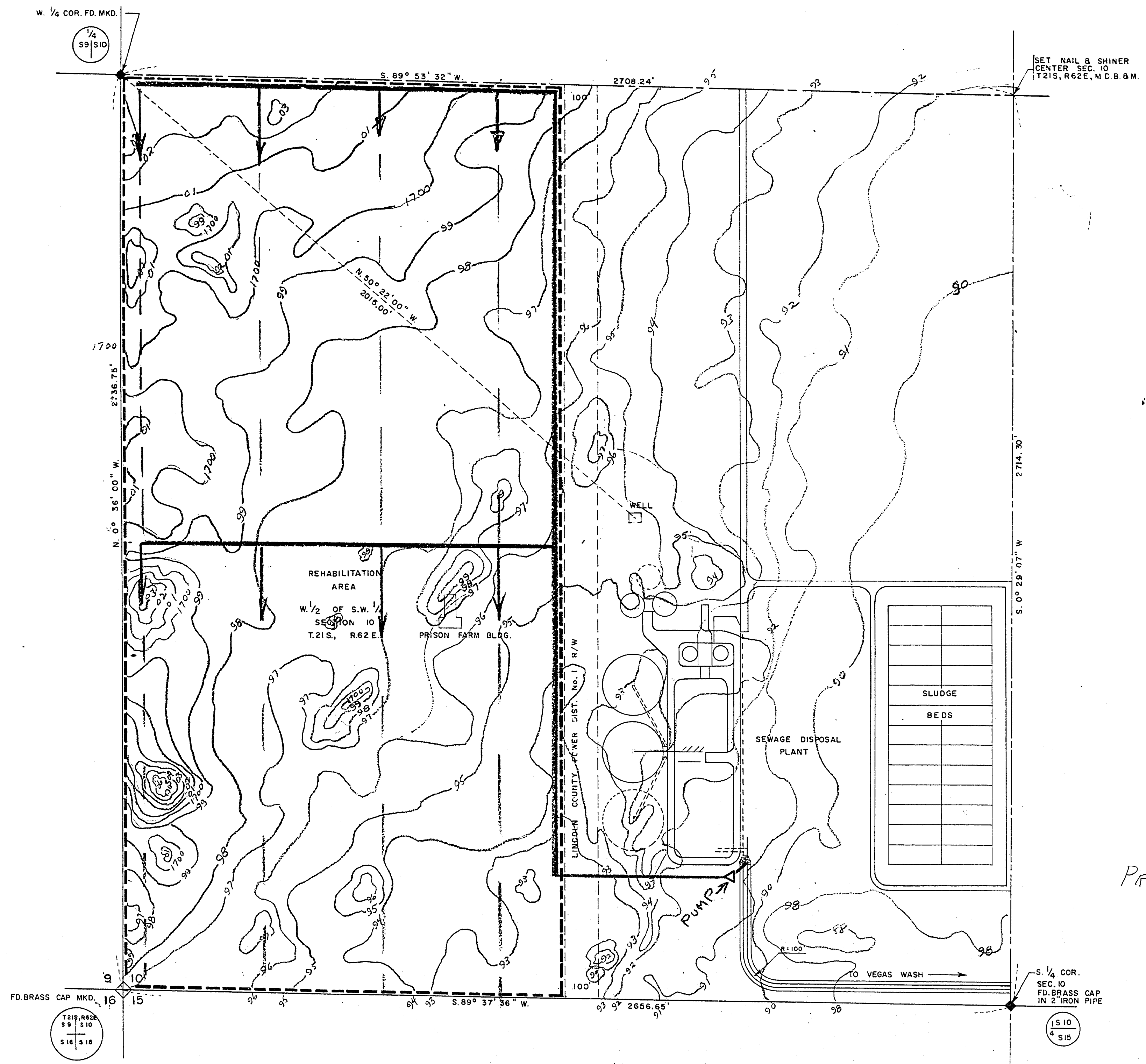


① 42.1 ACRES EACH

② 3 3/4 C INCHES EVERY 7 DAYS



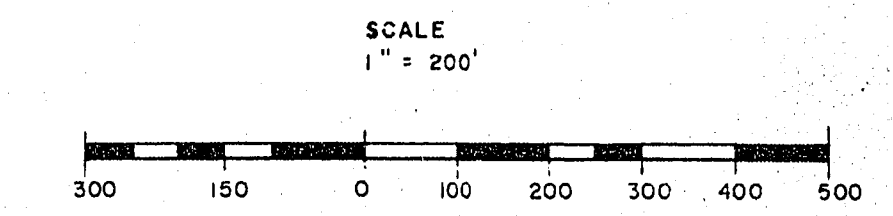
STATE OF NEVADA SS.  
 COUNTY OF CLARK

I, L. A. HARRIS, being first duly sworn, depose and say that this map, consisting of two sheets has been correctly



PROPOSED POINT OF DI BEAR

BASIS OF BEARING, the WEST LINE of the S.W. 1/4 SEC. 10, T 21 S., R 62 E., M.D.B. & M., DEPENDENT RESURVEY UNITED STATES DEPT. of INTERIOR, BUREAU of LAND MANAGEMENT. N. 0° 36' 00" W.



CITY OF LAS VEGAS, NEVADA  
 ENGINEERING DEPT.

*to be completed* 642-525

DRAWN BY: L. HARPER	CHK. BY:	APPROVED:	FIELD BOOK REF.
DATE 9-26-56	DATE	DATE	55-26

5-52