

236

# STEWART AVE.

6-33-1

6-41-1

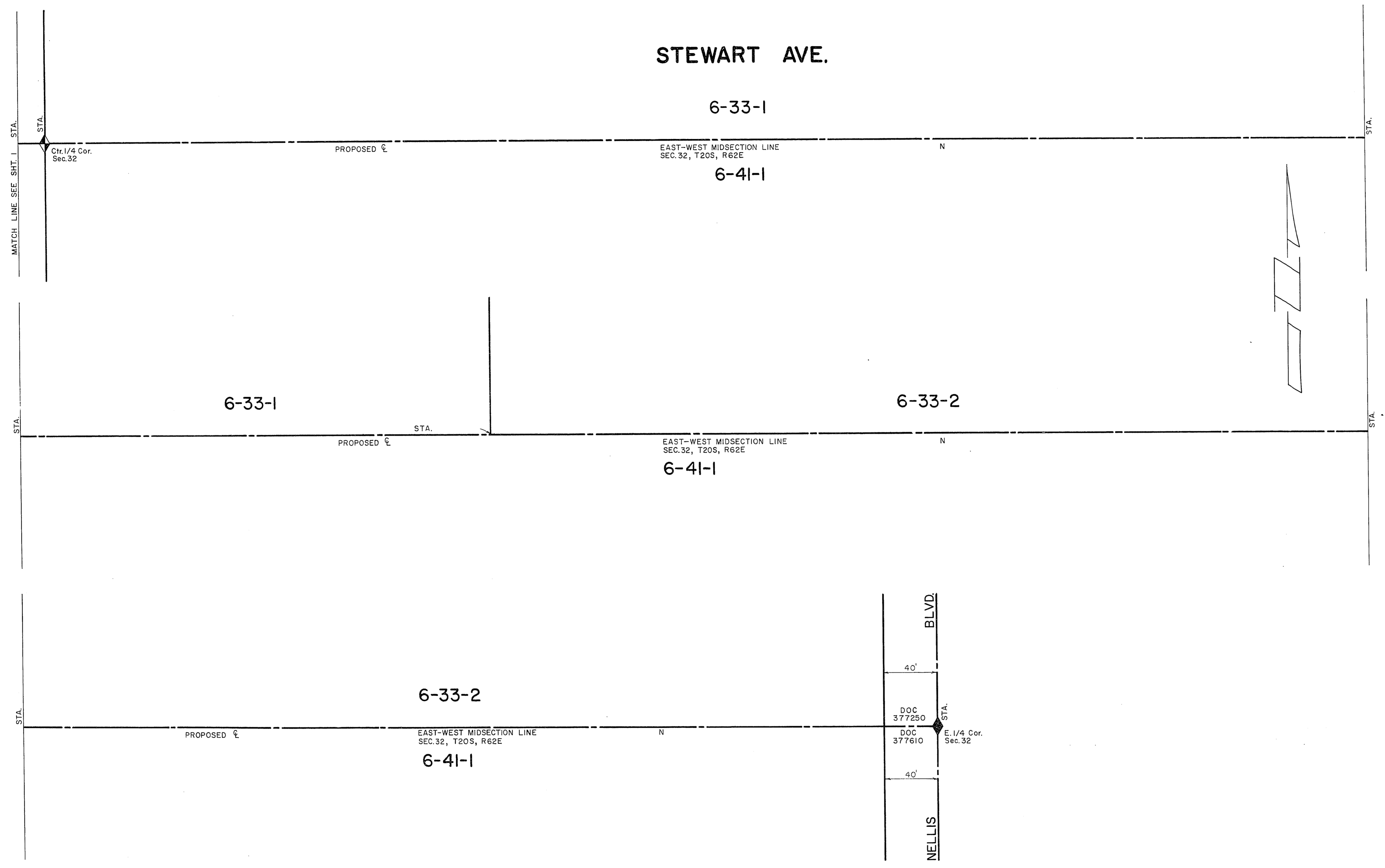
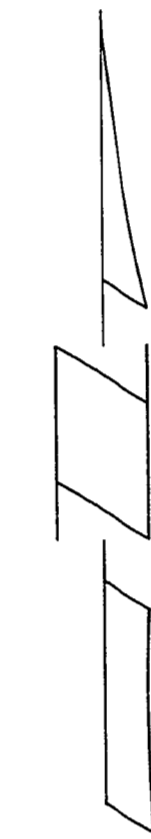
6-33-1

6-33-2

6-41-1

6-33-2

6-41-1



**CITY OF LAS VEGAS NEVADA**  
 DEPARTMENT OF PUBLIC WORKS  
 SERVICES DIVISION

R/W REQUIREMENTS  
 STEWART AVE.  
 LAMB BLVD. TO NELLIS BLVD.

W.O. NO. 3077	F.BK. NO.	DATE	DRAWING NO.
SC. (H) 1" = 40'	SC. (V)		
DR. R.M.		FILE NO.	
APPROVED BY DIRECTOR OF PUBLIC WORKS		115-301A	
SHEET 2 OF 2			