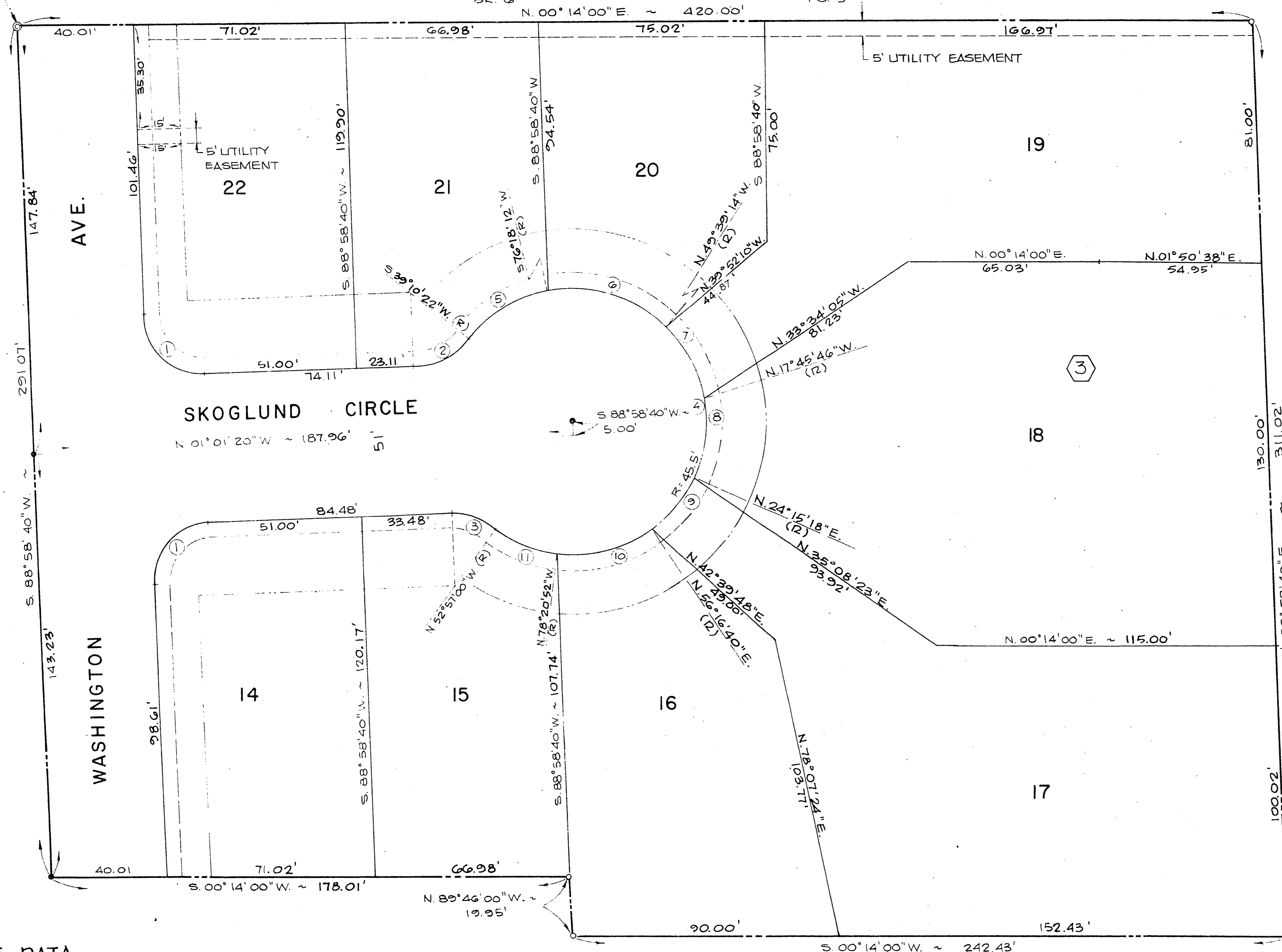
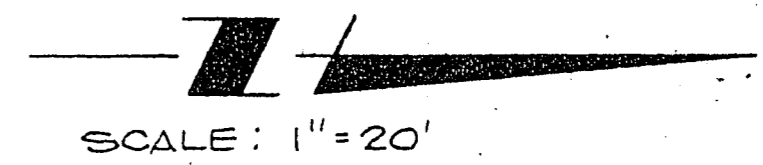


# WOODLAND HILLS ~ UNIT NO. 3

S.W. COR., SE 1/4, NE 1/4, SEC. 30,  
T 20 S., R. 61 E., MDM. - FND. PK.  
NAIL # + TIES (CK'D. # ACCEPTED)

TWIN LAKES COUNTRY CLUB ESTATES NA1  
BK. C PG. 3



WOODLAND HILLS UNIT NO. 2  
BK. 20 PG. 12

**CURVE DATA**

NO.	Δ	R.	L.	T.
1.	30° 00' 00"	20.00'	31.42'	20.00'
2.	49° 48' 18"	25.00'	21.73'	11.61'
3.	38° 04' 20"	25.00'	16.61'	8.63'
4.	267° 52' 38"	45.50'	212.73'	—
5.	37° 07' 50"	45.50'	29.49'	15.28'
6.	54° 02' 34"	45.50'	42.92'	23.20'
7.	31° 53' 28"	45.50'	25.33'	13.00'
8.	42° 01' 04"	45.50'	33.37'	17.41'
9.	32° 01' 22"	45.50'	25.43'	13.06'
10.	45° 22' 28"	45.50'	36.03'	19.02'
11.	25° 23' 52"	45.50'	20.17'	10.25'

UNDEVELOPED

**LEGEND**

- 19 LOT NUMBER
- ③ BLOCK NUMBER
- ⑩ CURVE NUMBER
- 5' UTILITY EASEMENT
- SETBACK:  
20' KNUCKLE,  
25' FRONT YARD,  
15' SIDE YARD CORNER
- SET A SURFACE CONC. MON. PER C.I.V. STANDARD
- SET 5/8" REBAR # ALUM. CAP