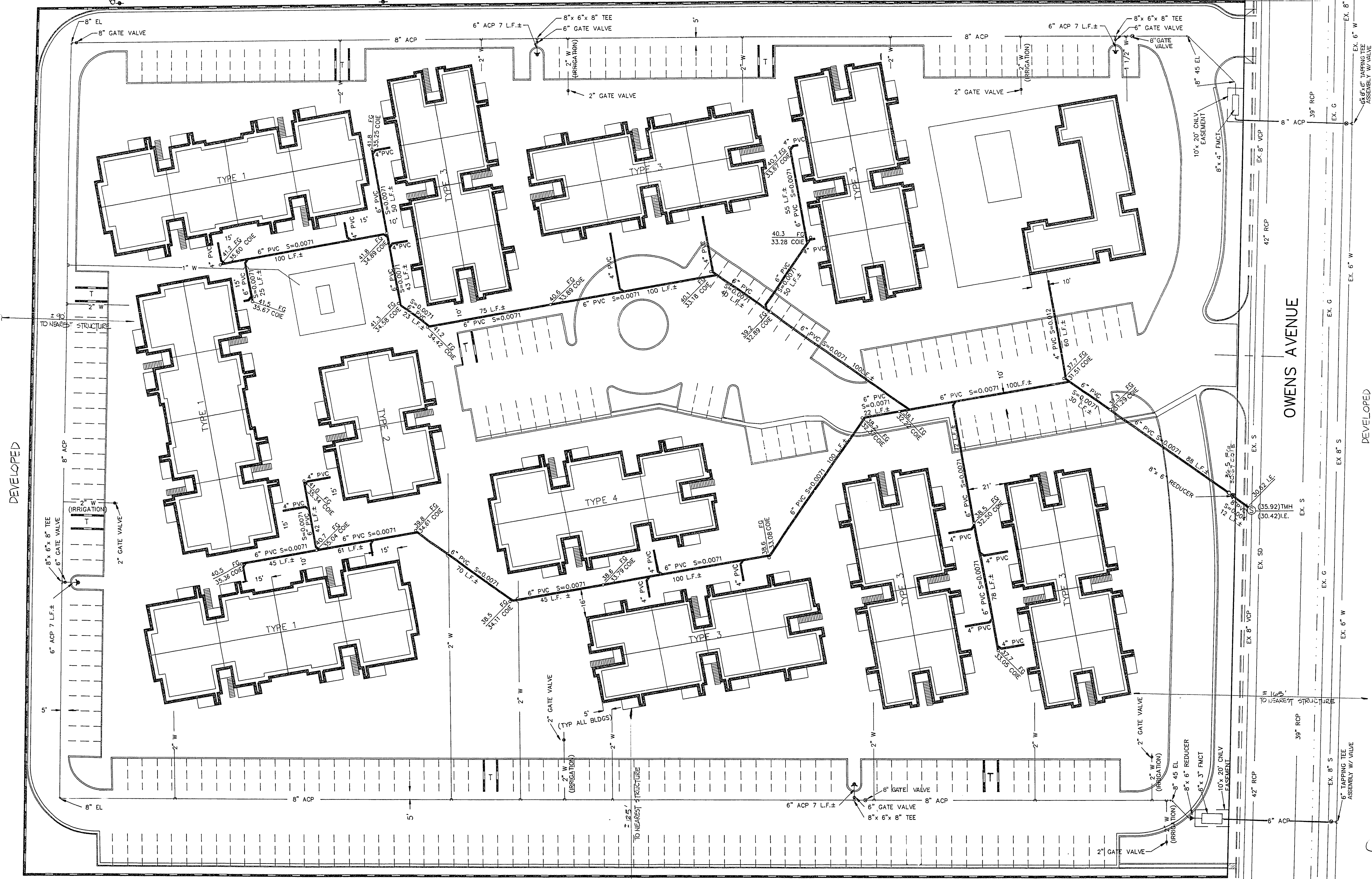


SCALE 1" = 30'

DEVELOPED



**ESTIMATE OF QUANTITIES**

SEWER	
4" PVC	349 L.F.
6" PVC	1,514 L.F.
8" PVC	12 L.F.
CLEANOUT	25 EA.
8" x 6" REDUCER	1 EA.

WATER	
1" PVC	144 L.F.
1 1/2" PVC	39 L.F.
2" PVC	884 L.F.
6" ACP	106 L.F.
8" ACP	1800 L.F.
6" TAPPING TEE	1 EA.
8" x 6" x 8" TEE	4 EA.
6" x 3" x 6" TEE	1 EA.
2" TAPPING TEE	1 EA.
2" GATE VALVE	6 EA.
6" GATE VALVE	3 EA.
8" GATE VALVE	4 EA.
FIRE HYDRANT	4 EA.
8" EL	3 EA.
8" x 4" FMCT	4 EA.
8" x 6" REDUCER	1 EA.
8" x 4" FMCT	1 EA.
6" x 3" FMCT	1 EA.

ESTIMATE OF QUANTITIES ARE APPROXIMATE ONLY. IT IS THE RESPONSIBILITY OF THE CONTRACTOR TO VERIFY ALL QUANTITIES.

**LEGEND**

— EX. S —	EXISTING SEWER
— EX. W —	EXISTING WATER
— SECTION LINE	
— CENTER LINE	
—	EXISTING CURB
— T —	EXISTING TELEPHONE LINE
— O —	EXISTING POWER TRANSMISSION MAIN W/ GUT
—	PROPOSED 6" CMU WALL
— 6" PVC —	PROPOSED FIRE HYDRANT
— 6" PVC —	PROPOSED SEWER LINE
— 2" W —	PROPOSED WATER LINE
—	EXISTING CONTOUR LINE

**NOTE**

APPROVAL OF THESE PLANS SHALL NOT BE CONSTRUED TO BE A PERMIT FOR, OR BE AN APPROVAL OF, ANY VIOLATION OF ANY OF THE PROVISIONS OF THE STATE, COUNTY, OR CITY LAWS.

FIRE FLOW 3000 GPM AT 20 P.S.I. RESIDUAL

- BUILDING INFORMATION**
- TYPE OF CONSTRUCTION - TYPE V-N
  - OCCUPANCY GROUP - R-1
  - INTENDED USE - RESIDENTIAL APARTMENTS
  - NO. OF STORIES - 2 STORIES
  - SQUARE FOOTAGE -  
 BLDG. TYPE 1 - 17,936 s.f.  
 BLDG. TYPE 2 - 9,872 s.f.  
 BLDG. TYPE 3 - 13,536 s.f.  
 BLDG. TYPE 4 - 14,384 s.f.
  - FIRE RESISTIVE RATING - ONE HOUR
  - NON SPRINKLED

**APPROVAL**

*[Signature]* 8-8-88  
 CITY OF LAS VEGAS CITY ENGINEER DATE

*[Signature]* 7/20/88  
 CLV FIRE PROTECTION ENGINEER DATE

*[Signature]* DATE  
 SOUTHWEST GAS

*[Signature]* 6/21/88  
 NEVADA POWER COMPANY DATE

*[Signature]* 6-21-88  
 CENTER DATE

*[Signature]* 7-12-88  
 CNCLY WATER DEPARTMENT DATE

**BASIS OF BEARING**

THE NORTHERLY SECTION LINE OF SECTION 25, TOWNSHIP 20 SOUTH, RANGE 61 EAST BEARING S 88 20' 04" E AS RECORDED IN BOOK 926 DOCUMENT No. 743964 IN THE OFFICE OF THE CLARK COUNTY RECORDER, NEVADA.

**BENCHMARK**

CITY OF LAS VEGAS BENCHMARK No. 06126A6 AT THE SOUTHWEST CORNER OF 23rd STREET AND OWENS AVENUE. 1 1/2" ALUM. PLATE ELEVATION 1849.098

REVISIONS		
No.	DATE	DESCRIPTION

PREPARED FOR: **COMMERCIAL BROKERS**

DATE: **DESIGNED:**  
 DRAWN: **1500 EAST TROPICANA AVENUE**  
 SUITE 125  
 LAS VEGAS, NEVADA 89119

CHECKED: **7-22-88**  
 SCALE:

**NEA CONSULTING ENGINEERS**

**WOODRIDGE APARTMENTS**  
 UTILITY PLAN

SHEET **C-5**  
 OF **8**

107-V1577

17-362