

13-17-2
01371

921221

FINAL MAP OF

WINDCHIME PHASE 3

(A PORTION OF LOT 3, PARCEL MAP - F. 57, PG. 90)
A PORTION OF THE SOUTHWEST QUARTER (SE 1/4) OF THE SOUTHWEST QUARTER (SW 1/4)
OF SECTION 20, TOWNSHIP 20 SOUTH, RANGE 61 EAST, M.D.M.,
CITY OF LAS VEGAS, CLARK COUNTY, NEVADA



LEGEND

- BOUNDARY LINE
- SET TYPE III MONUMENT
PLS # 8431
- ⊙ FOUND POINT AS NOTED
- (R) RADIAL BEARING
- 27 LOT NUMBER
- C1 CURVE NUMBER
- L1 LINE NUMBER
- S.F. SQUARE FEET
- BUILDING SETBACK LINE
- ④ BLOCK NUMBER

NOTES

ACREAGE: 4.62 ACRES ±
TOTAL LOTS: 36
BUILDING SETBACKS
18' FRONT/16' CUL-DE-SAC
10' SIDE ON CORNER
5' SIDE
10' REAR
REFERENCES
PM - F. 57, PG. 90
PLAT - B. 52, PG. 98

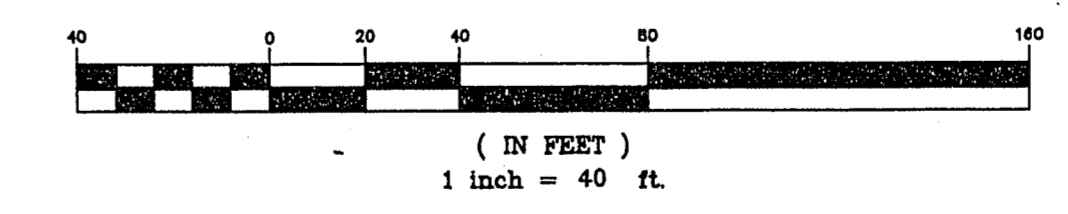
CURVE TABLE

No.	RADIUS	DELTA	LENGTH	TANGENT
C1	325.00'	18°01'46"	102.27'	51.56'
C2	15.00'	90°17'52"	23.64'	15.08'
C3	325.00'	06°49'18"	38.69'	19.37'
C4	325.00'	08°55'23"	50.61'	25.36'
C5	325.00'	02°17'05"	12.96'	6.48'
C6	30.00'	89°42'08"	46.97'	29.84'
C7	15.00'	89°42'08"	23.48'	14.92'
C8	60.00'	07°27'59"	7.82'	3.91'
C9	60.00'	42°44'43"	44.76'	23.48'
C10	60.00'	36°57'27"	38.70'	20.05'
C11	60.00'	38°21'52"	40.18'	20.87'
C12	60.00'	23°37'02"	24.73'	12.54'
C13	60.00'	149°09'03"	156.19'	217.46'
C14	16.00'	29°43'28"	8.30'	4.25'
C15	300.00'	18°01'46"	94.40'	47.59'
C16	300.00'	17°58'05"	94.08'	47.43'

LINE TABLE

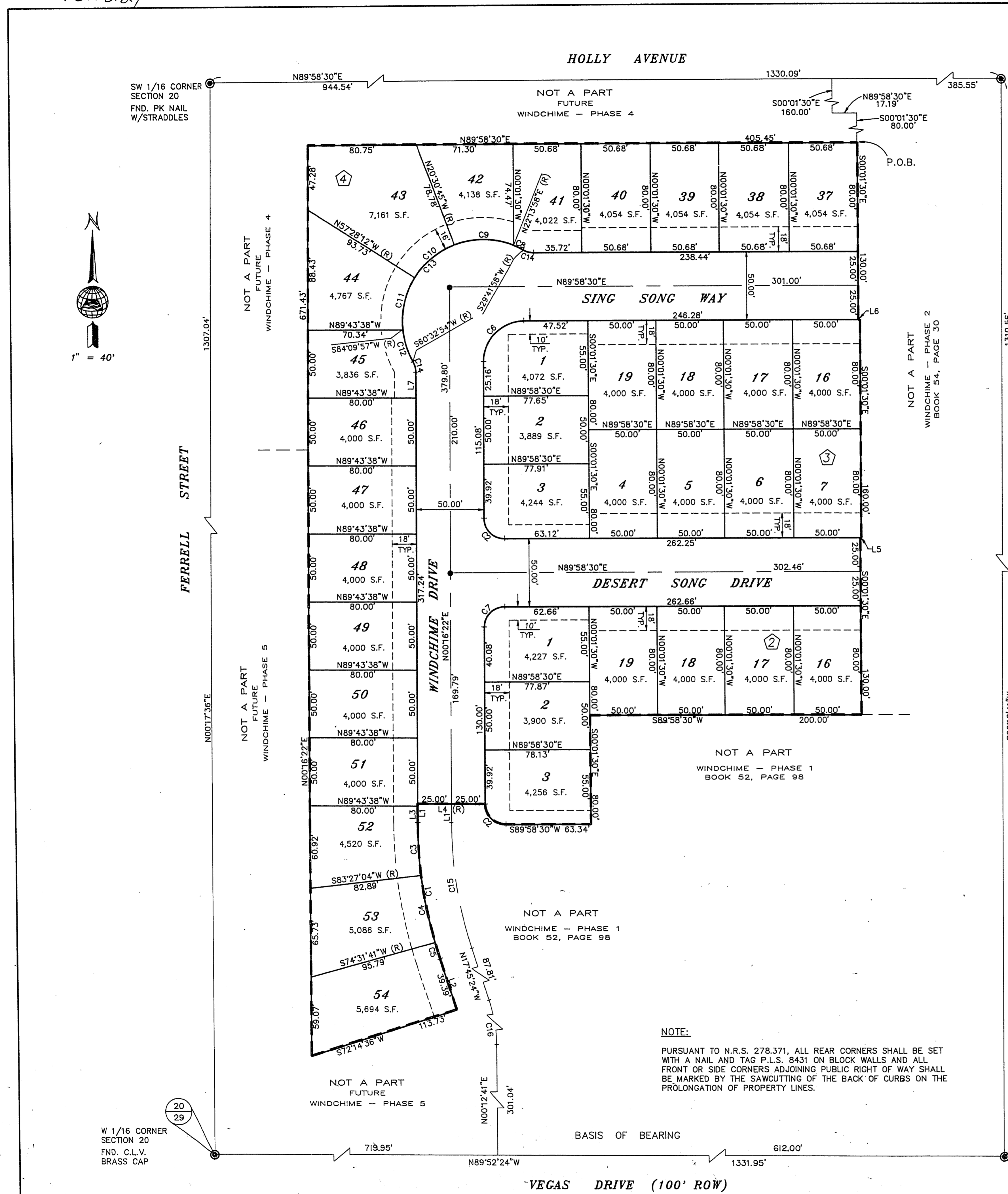
No.	BEARING	DISTANCE
L1	S00°16'22"W	13.93'
L2	S17°45'24"E	39.39'
L3	N00°16'22"E	12.47'
L4	N89°43'38"W	50.00'
L5	S89°58'30"W	0.87'
L6	N89°58'30"E	1.24'
L7	N00°16'22"E	18.70'

GRAPHIC SCALE



NOTE:

PURSUANT TO N.R.S. 278.371, ALL REAR CORNERS SHALL BE SET WITH A NAIL AND TAG P.L.S. 8431 ON BLOCK WALLS AND ALL FRONT OR SIDE CORNERS ADJOINING PUBLIC RIGHT OF WAY SHALL BE MARKED BY THE SAWCUTTING OF THE BACK OF CURBS ON THE PROLONGATION OF PROPERTY LINES.



S 1/16 CORNER SECTION 20 FND. NAIL & TAG

NOT A PART WINDCHIME - PHASE 2 BOOK 54, PAGE 30

NOT A PART FUTURE WINDCHIME - PHASE 4

NOT A PART FUTURE WINDCHIME - PHASE 5

NOT A PART WINDCHIME - PHASE 1 BOOK 52, PAGE 98

NOT A PART WINDCHIME - PHASE 1 BOOK 52, PAGE 98

NOT A PART FUTURE WINDCHIME - PHASE 5

W 1/16 CORNER SECTION 20 FND. C.L.V. BRASS CAP

S 1/4 CORNER SECTION 20 FND. C.L.V. BRASS CAP

SHEET 2 of 2

Church Engineering of Nevada, Inc.
Consulting Engineers 6800 W. Charleston Blvd.
Planners Suite 140
Surveyors Las Vegas, Nv. 89102
(702) 878-6244

BOOK 55 PAGE 8
4219-3