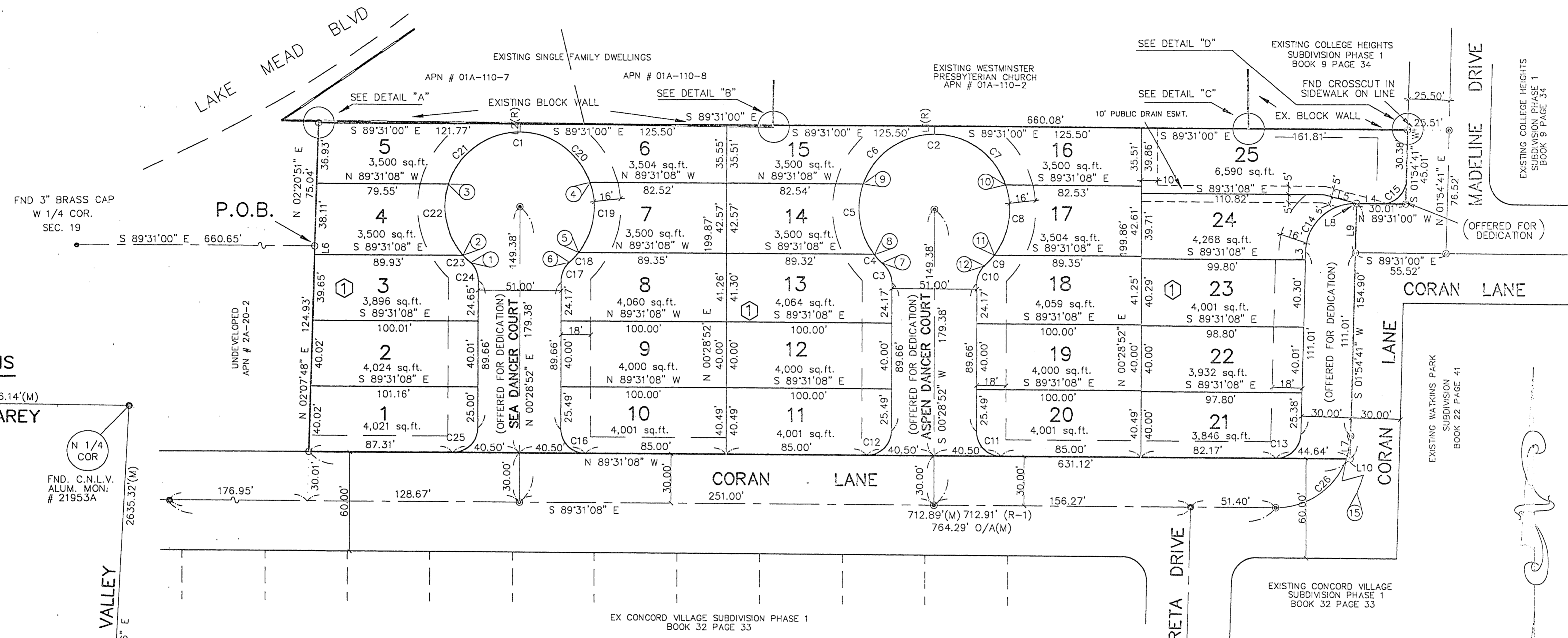
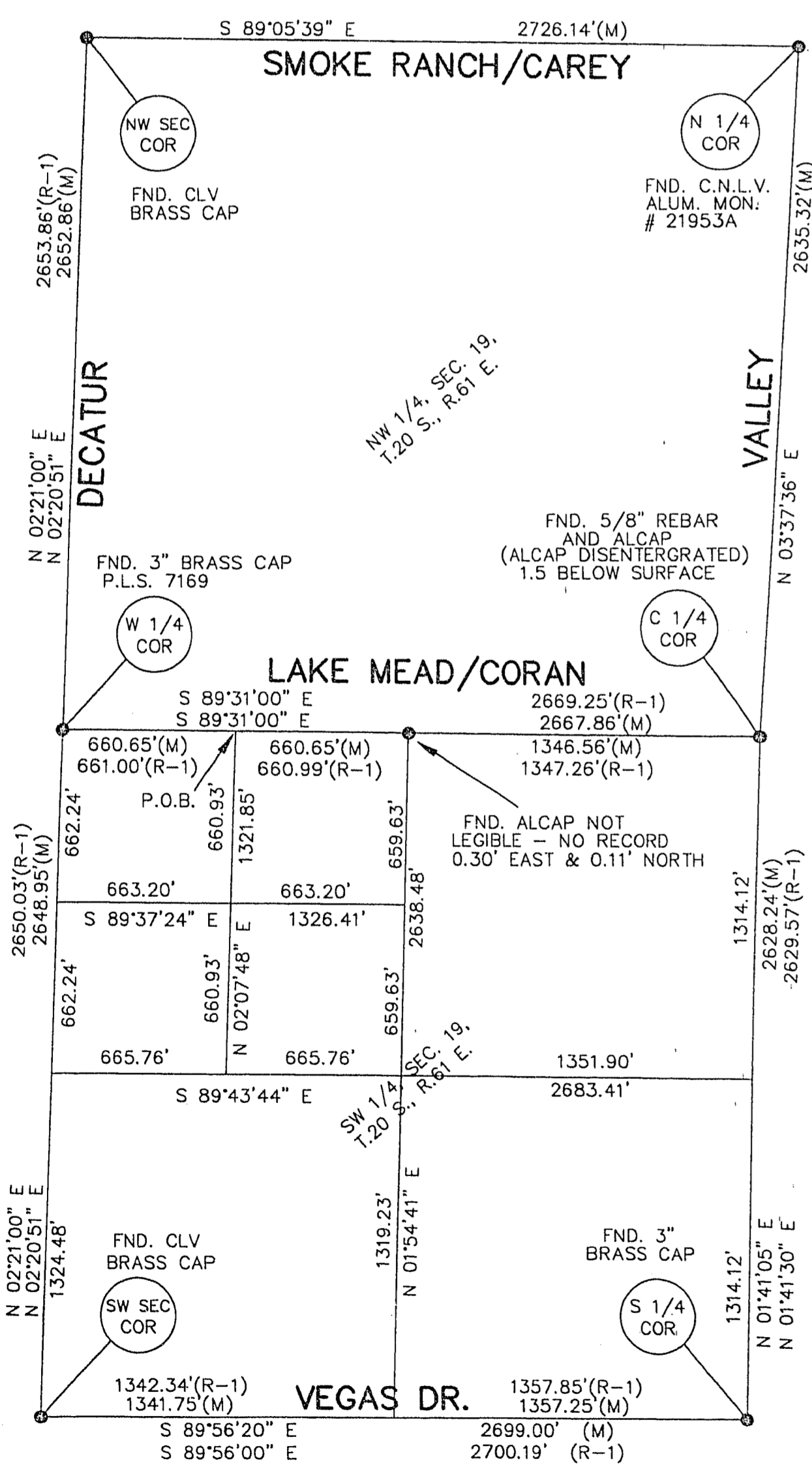


# WIND DANCER

A PORTION OF THE WEST HALF (W 1/2) OF SECTION 19,  
TOWNSHIP 20 SOUTH, RANGE 61 EAST, M.D.B. & M., CITY OF LAS VEGAS, NEVADA



### SURVEY ANALYSIS



### CURVE TABLE

CURVE	RADIUS	LENGTH	TANGENT	DELTA
C1	45.50'	219.48'	40.70'	276°22'46"
C2	45.50'	219.48'	40.70'	276°22'46"
C3	14.50'	12.20'	6.48'	48°11'23"
C4	45.50'	8.63'	4.33'	10°52'02"
C5	45.50'	44.91'	24.47'	56°32'56"
C6	45.50'	56.20'	32.32'	70°46'24"
C7	45.50'	56.21'	32.32'	70°47'12"
C8	45.50'	44.96'	24.51'	56°36'54"
C9	45.50'	8.57'	4.30'	10°47'18"
C10	14.50'	12.20'	6.48'	48°11'23"
C11	15.00'	23.56'	15.00'	90°00'00"
C12	15.00'	23.56'	15.00'	90°00'00"
C13	15.00'	23.19'	14.63'	88°34'11"
C14	30.00'	46.38'	29.26'	88°34'19"
C15	15.00'	23.19'	14.63'	88°34'19"
C16	15.00'	23.56'	15.00'	90°00'00"
C17	14.50'	12.20'	6.48'	48°11'23"
C18	45.50'	8.58'	4.30'	10°48'14"
C19	45.50'	44.91'	24.48'	56°33'33"
C20	45.50'	56.25'	32.35'	70°49'36"
C21	45.50'	57.67'	33.44'	72°37'16"
C22	45.50'	46.21'	25.32'	58°11'20"
C23	45.50'	5.86'	2.93'	07°22'47"
C24	14.50'	12.20'	6.48'	48°11'23"
C25	15.00'	23.56'	15.00'	90°00'00"
C26	45.00'	69.56'	43.89'	88°34'11"

### RADIAL LINE TABLE

- S42°17'29"W (R)
- S49°40'16"W (R)
- N72°08'24"W (R)
- N71°18'28"E (R)
- S52°07'59"E (R)
- S41°19'45"E (R)
- S42°17'29"W (R)
- S53°09'31"W (R)
- N70°17'32"W (R)
- N71°16'04"E (R)
- S52°07'02"E (R)
- S41°19'45"E (R)
- N88°05'19"W (R)
- N00°29'00"E (R)
- S70°02'52"E (R)

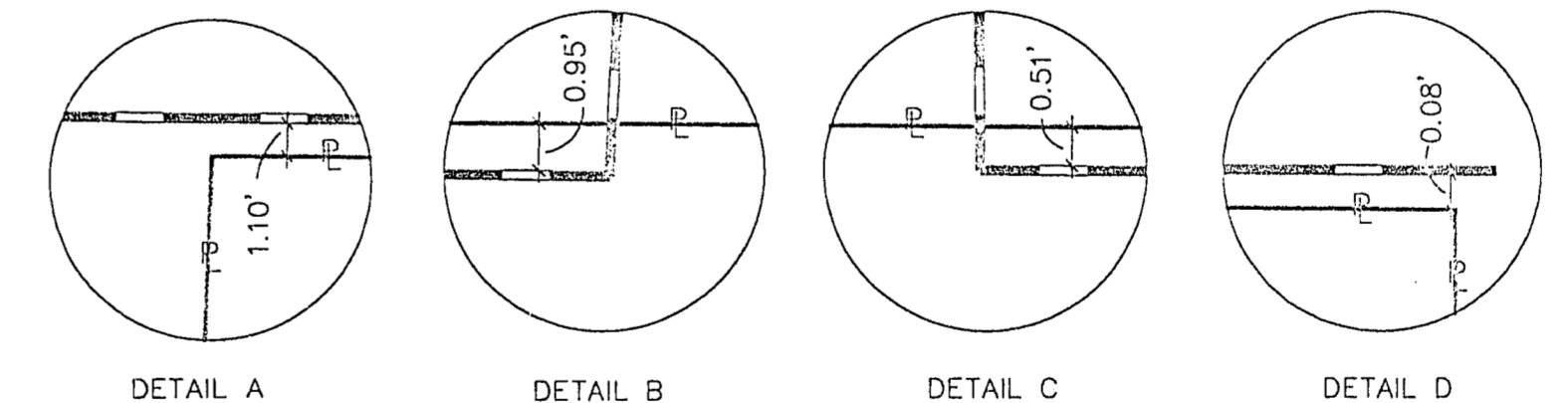
### LEGEND

- SET REBAR AND ALCAP PLS #9890 WITH BRASS TIES
- FOUND REBAR AND ALCAP PLS #6495 UNLESS OTHERWISE NOTED.
- SET REBAR AND PLASTIC CAP PLS #9890
- ④ RADIAL BEARING LINE
- ① BLOCK NUMBER
- (R-1) RECORD OF SURVEY FILE 1 PAGE 3

### 17 LOT NUMBER

THERE ARE 25 LOTS IN THIS SUBDIVISION  
TOTAL AREA = 2.92 ACRES.±  
O/A = OVERALL DISTANCE ALONG LINE OR CURVE

— BUILDING SETBACK LINE  
FRONT: 16' - 18', SIDE: 5'  
CORNER SIDE: 10' REAR: 10'



### NOTES

- PURSUANT TO N.R.S. 278.371 ALL REAR LOT CORNERS SHALL BE SET WITH A NAIL AND TAG P.L.S. 9890 ON BLOCK WALLS AND ALL FRONT OR SIDE CORNERS ADJOINING PUBLIC RIGHT OF WAYS SHALL BE MARKED BY SAWCUTTING OF THE BACK OF CURBS ON THE PROLOGATION OF PROPERTY LINES.
- ANY SUBSEQUENT CHANGES TO THIS MAP SHOULD BE EXAMINED AND MAY BE DETERMINED BY REFERENCE TO THE COUNTY RECORDER'S CUMULATIVE MAP INDEX. N.R.S. 278.5695
- EASEMENTS MENTIONED IN BOOK 71 PAGE 261 OF DEEDS AS DOCUMENT #410145 & BOOK 71 PAGE 357 OF DEEDS AS DOCUMENT #411352 BOTH ON RECORD AT THE CLARK COUNTY RECORDERS OFFICE ARE NOT SHOWN GRAPHICALLY ON THIS MAP. THESE PRIVATE EASEMENTS ARE NO LONGER REQUIRED BECAUSE ALL ABUTTING PROPERTIES AND THIS PROPERTY ARE TO BE SERVICED BY THE LAS VEGAS VALLEY WATER DISTRICT.