

**MAIN AREA**  
 TOTAL BLDG. AREA 15,600'  
 14'-0" MIN. CLR. HEIGHT  
 4" CONC. FLOOR SLAB W/  
 6" X 6" #10X#10 W.W.M.  
 @ FIN. FLR. ELEV. 1910.00

**LEGAL DESCRIPTION**  
 SURVEY MAP  
 ADDITION OF THE NE 1/4, NE 1/4, SECTION 27  
 TOWNSHIP 20 SOUTH, RANGE 61 EAST  
 M.D.B. & M.  
 CLARK COUNTY, NEVADA

**LEGEND**  
 [Symbol] PRE-CAST CONC. TILT UP PANELS  
 W/Poured IN PLACE COLUMNS  
 [Symbol] EX-4 W.D. STUD PARTITION, OR  
 AS NOTED OTHERWISE W/4" ROCKWOOL  
 INSULATION  
 [Symbol] 8X8X16 CONC. BLOCK WALL

[Symbol] 1910/10 FIN. GRADE  
 [Symbol] 1910/20/21 TOP OF CURB  
 [Symbol] --- EXIST. CONTOURS

**PLOT AND FLOOR PLAN**  
 SCALE 1/8" = 1'-0"

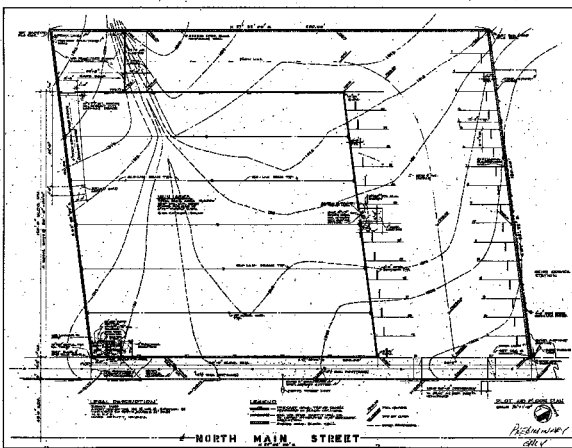
**NORTH MAIN STREET**  
 N 27° 53' 00" E

NO.		REVISION	CHECKED	APPROVED	DATE	BY
1					1/19/70	
2					1/19/70	

WHOLESALE RETAIL DISTRIBUTION CENTER  
 FOR  
**SMART AIR FINAL TRIS CO.**  
 NORTH MAIN ST. LAS VEGAS, NEVADA

**JACK H. MACDONALD**  
 ARCHITECTS AND ENGINEERS  
 321 S. SAN VICENTE BLVD. LOS ANGELES 90048 272-3131

SHEET NO. 1



PROFESSIONAL ENGINEER  
**JACK H. MACDONALD**  
 ARCHITECT AND ENGINEER  
 222 S. MAIN STREET, LOS ANGELES, CALIF.

APPROVED  
 [Signature]  
 1917