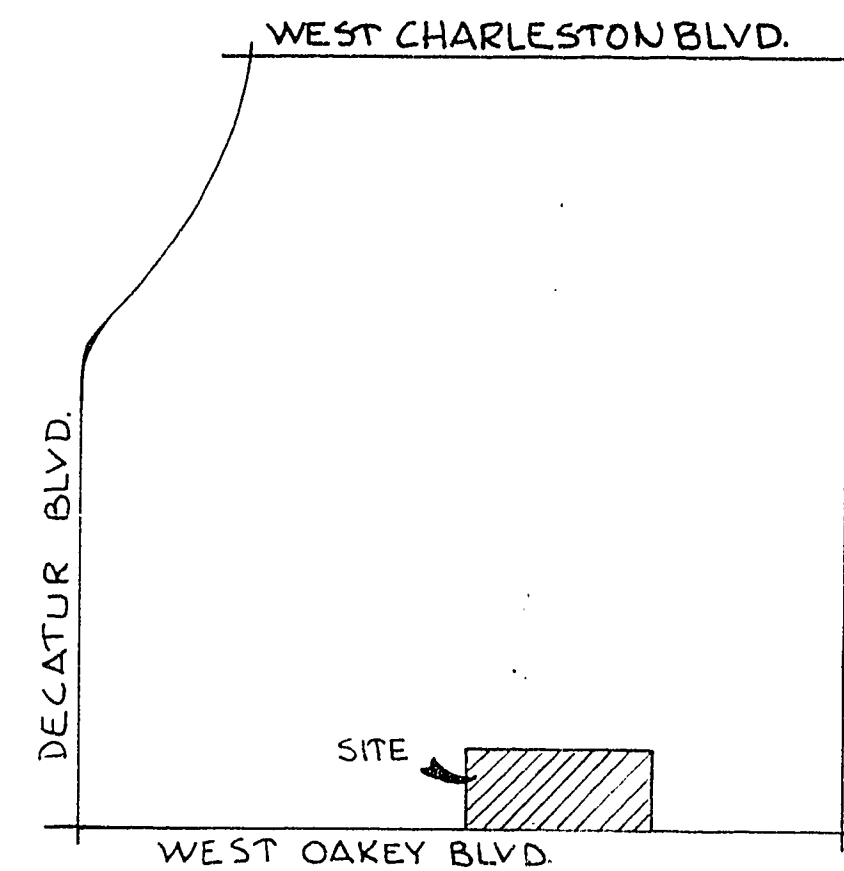
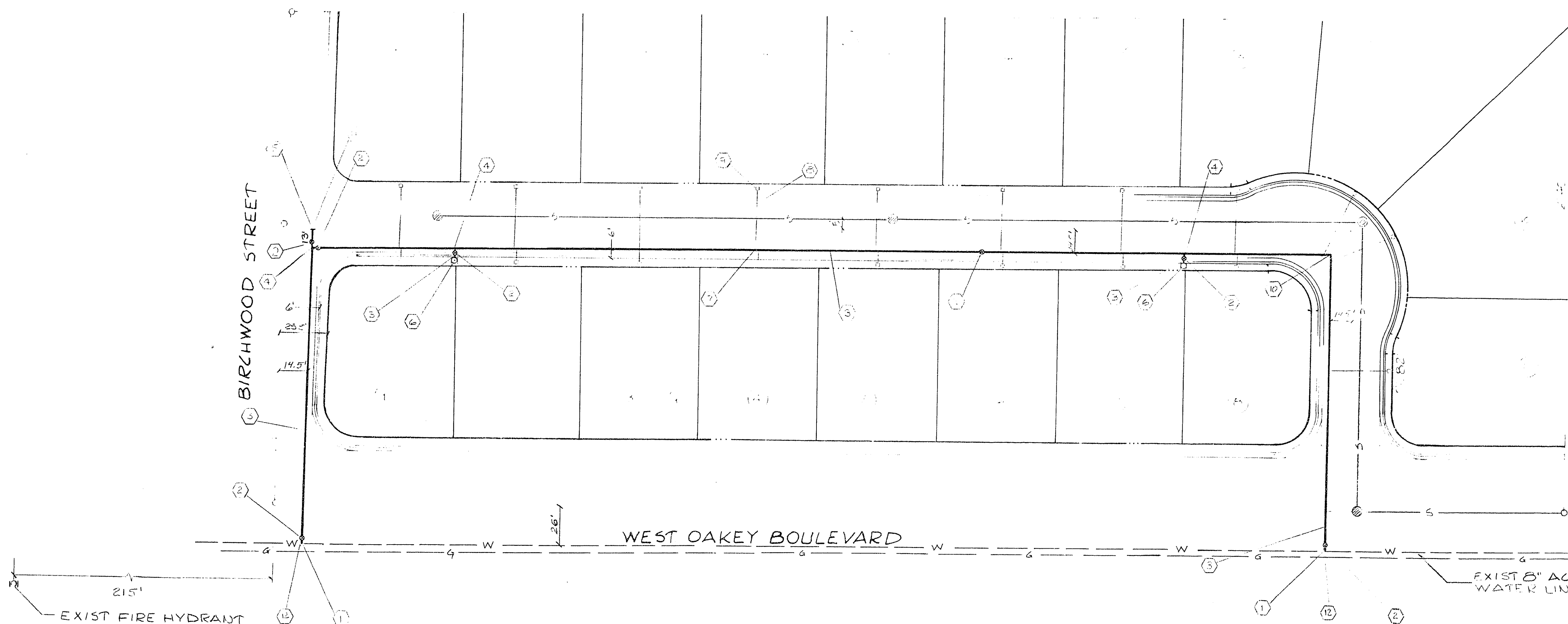
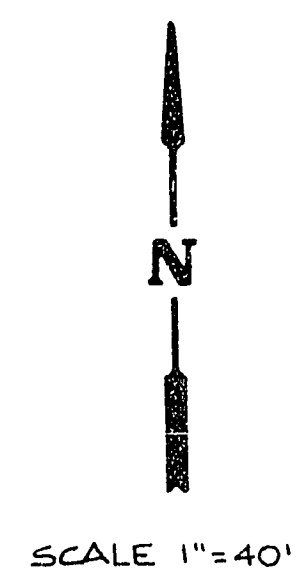


**ESTIMATED QUANTITIES**

① 8"X8"X6" TAPPING TEE	2EA
② 6" NRS GATE VALVE W/VALVE COVER & VALVE BOX	7EA
③ 6" ACP WATER LINE	1010LF
④ 6"X6"X6" TEE	1EA
⑤ 6" PLUG W/THRUST BLOCK	1EA
⑥ FIRE HYDRANT	2EA
⑦ 3/4" SERVICE CONNECTION	19EA
⑧ 3/4" SERVICE LINE (PE)	480LF
⑨ 3/4" WATER METER BY LVV.WD.	19EA
⑩ 6" 90° ELBOW W/THRUST BLOCK	1EA
⑪ 2" BLOW OFF	1EA
⑫ WET TAP	2EA



VICINITY MAP  
SEC. 6, T.21S, R.61E, M.D.B&M



**WATER LINE NOTES**

- All work to conform to Las Vegas Valley Water District Standard plates.
- All work, except as modified hereon or by Note No. 1 shall be done in accordance with the most current draft of edition of Uniform Standard Specifications for Public Works Construction Offsite Improvements Clark County Area.
- Notice to be given Engineering Department of the Las Vegas Valley Water District 45 days prior to actual construction.
- Service saddles or tapped collars will be required on all services, double tap collars are not permitted.
- All lines to be pressure tested to 200 psi.
- All valve boxes shall have concrete collars at surface of paved areas.
- Deflection angle shall not exceed 2 1/2 degrees per 13 foot section of pipe for pipe sizes smaller than 14 inches and shall not exceed 2 degrees for pipe sizes between 14" and 16".
- All meters shall be located outside of driveways.
- Detector taps required in accordance with Standard Plate No. 27 where indicated and as follows:
  - Over all mains not installed at 6 feet from back of curb.
  - Over all service laterals not installed at right angles to mains.

**APPROVALS**

*Stephen Hampton* 1-4-79  
CLV FIRE MARSHAL DATE

*E. J. Wilkin* 1-9-79  
CLV QUALITY CONTROL ENGINEER DATE

*Neil Lusk* 1-7-79  
CLV FIELD OPERATIONS ENGINEER DATE

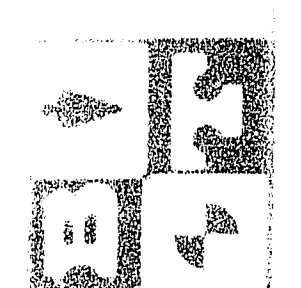
*[Signature]* 1/10/79  
LAS VEGAS VALLEY WATER DISTRICT CLV ENGINEER DATE



*Richard J. Boyd*  
12-21-78

DENNIS OAKLEY

AUGUST 1978  
DM  
DM  
RJB  
1"=40'



WATER LINE DESIGN  
SECTION 6, TOWNSHIP 21 SOUTH, RANGE 61 EAST,  
CLARK COUNTY  
CITY OF LAS VEGAS  
WE STOK PARK

SECTION 6, TOWNSHIP 21 SOUTH, RANGE 61 EAST,  
CLARK COUNTY  
CITY OF LAS VEGAS

7  
6

