

WESTLEIGH - TRACT 5
LAS VEGAS, NEVADA

A PORTION OF THE NW 1/4
SEC. 5, T.21 S., R.6 E., M.D.B. & M.
CLARK COUNTY, NEVADA

CITY OF LAS VEGAS
ENGINEERING DEPT.
PLAN - WATER SYSTEM

APPROVED: *[Signature]* 11/10/54
Chief Engineer and Manager Date
Las Vegas Valley Water District

SPECIFICATIONS:
Pipe to be laid with minimum 3' cover from finish street grades.
Service Connections -
Corporation Stop to be Jones No. 1501 or Mueller No. H-15010.
Copper Service Pipe to be Type "K" soft coil.
Curb Stop to be Jones No. J-1507 or Mueller No. H-15275
Minimum cover - 30"

MATERIALS LIST -
6" 8"
1890' 6" Pipe 80' 8" Pipe
3 Gate Valves 1 8" Plug
2 22 1/2" Elbs 1 8'x6" Cross
2 6" Tees
2 Fire Hydrants
3 Valve Boxes

LEGEND:
--- Lines to be constructed
--- Existing Lines
⊗ Valve
⊙ Fire Hydrant
CHECKED BY: *[Signature]*
J. E. STRINGER
Office Engineer

Approval of this plan by the City of Las Vegas, Nevada,
does not relieve the Subdivider of responsibility for errors
in calculation, design, or planning by the Subdivider's
Engineer or Surveyor.

FIRE HYDRANT LOCATION

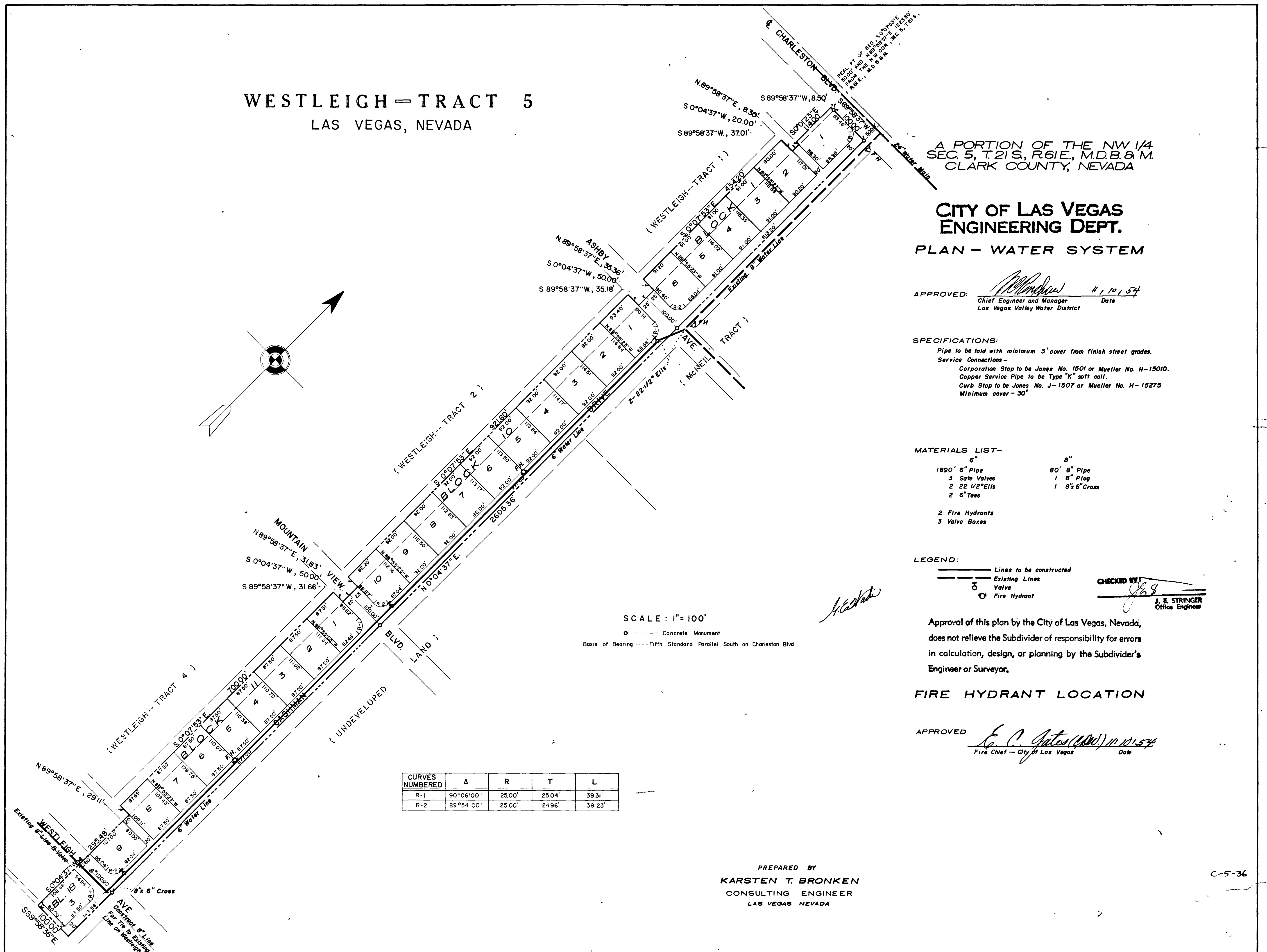
APPROVED: *[Signature]* 11/10/54
Fire Chief - City of Las Vegas Date

PREPARED BY
KARSTEN T. BRONKEN
CONSULTING ENGINEER
LAS VEGAS NEVADA

CURVES NUMBERED	Δ	R	T	L
R-1	90°06'00"	25.00'	25.04'	39.31'
R-2	89°54'00"	25.00'	24.96'	39.23'

SCALE: 1" = 100'

○ --- Concrete Monument
Basis of Bearing --- Fifth Standard Parallel South on Charleston Blvd



WESTLEIGH—TRACT 5
LAS VEGAS, NEVADA

APPROVED BY THE CITY ENGINEER
CITY OF LAS VEGAS

CITY OF LAS VEGAS
ENGINEERING DEPT.

PLAN - WATER SYSTEM

APPROVED BY THE CITY ENGINEER
[Signature] 11/1/54

EXPLANATION
This is a preliminary plan of water and sewer lines.
It is subject to change without notice.
It is not to be used for construction purposes.
It is not to be used for any other purpose.
It is not to be used for any other purpose.

LEGEND

1" = 100'	1" = 200'
1" = 300'	1" = 400'
1" = 500'	1" = 600'
1" = 700'	1" = 800'
1" = 900'	1" = 1000'

APPROVED BY THE CITY ENGINEER
[Signature] 11/1/54

Approved by the City of Las Vegas, Nevada,
General Manager of the Public Works Department
in accordance with the provisions of the Nevada
Public Works Act.

FIRE HYDRANT LOCATION

APPROVED BY THE CITY ENGINEER
[Signature] 11/1/54

SCALE: 1" = 100'
1" = 200'
1" = 300'

1" = 100'	1" = 200'	1" = 300'	1" = 400'	1" = 500'	1" = 600'	1" = 700'	1" = 800'	1" = 900'	1" = 1000'
-----------	-----------	-----------	-----------	-----------	-----------	-----------	-----------	-----------	------------

DESIGNED BY
HARVEY S. BRIDGMAN
CORPORATE ENGINEER
AND ARCHITECT

11/1/54

30.16