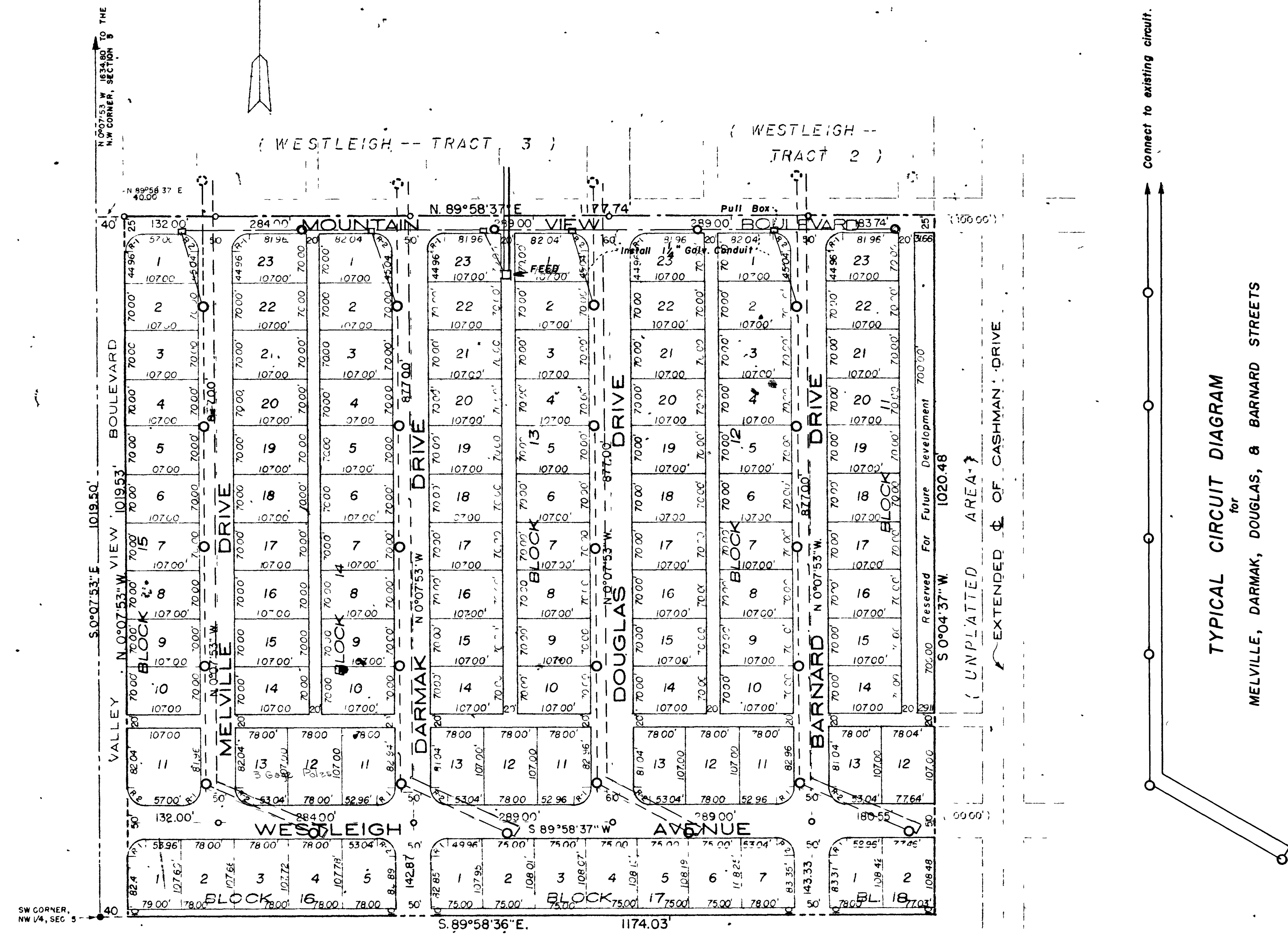


STREET LIGHTING for WESTLEIGH - TRACT 4 LAS VEGAS, NEVADA

A PORTION OF THE NW 1/4
SEC. 5, T.21 S., R.61 E., M.D.B. & M.
CLARK COUNTY, NEVADA



LEGEND
 ○ --- New Poles
 ⊗ --- Existing Poles

NOTES: Lighting standard to be Union Metal design H300B1 or approved equal
 Luminaire to be Type III distribution 6.6 group replacement
 Wire to be #8 bare medium hard drawn
 Wire from overhead line to luminaire to be #8 type RR
 20 poles to be 11 gage
 8 poles to be 3 gage

APPROVED: [Signature]
City Engineer
 APPROVED: [Signature]
City Electrician

AS BUILT

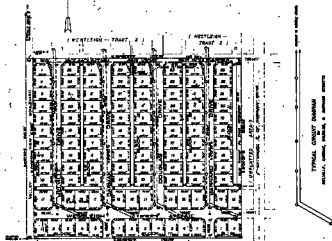
SCALE: 1" = 100'
 ○ --- Concrete Monument
 Basis of Bearing --- of Mountain View Avenue

CURVE DATA				
CURVES NUMBERED	Δ	R	T	L
R-1	90°56'30"	25.00'	25.04'	39.31'
R-2	89°53'30"	25.00'	24.96'	39.22'

6719
3-9-75 207Y-3300-A
3-9-75

STREET LIGHTING
 for
WESTLEIGH - TRACT 4
 LAS VEGAS, NEVADA

ALVIN W. PETERSON
 CIVIL ENGINEER
 CLARK COUNTY, NEVADA



LEGEND

- Street Light
- Building Footprint

NOTES:
 1. SEE ALL NOTES ON THE PREVIOUS DRAWING.
 2. ALL LIGHTS TO BE INSTALLED AT THE CURB CUT.
 3. ALL LIGHTS TO BE INSTALLED AT THE CURB CUT.
 4. ALL LIGHTS TO BE INSTALLED AT THE CURB CUT.
 5. ALL LIGHTS TO BE INSTALLED AT THE CURB CUT.

APPROVED: *[Signature]*
 CIVIL ENGINEER

APPROVED: *[Signature]*
 CIVIL ENGINEER

AS BUILT

Sheet 1 of 2

SCALE: 1"=100'
 1" = 100 Feet



3-5-15 2077-15