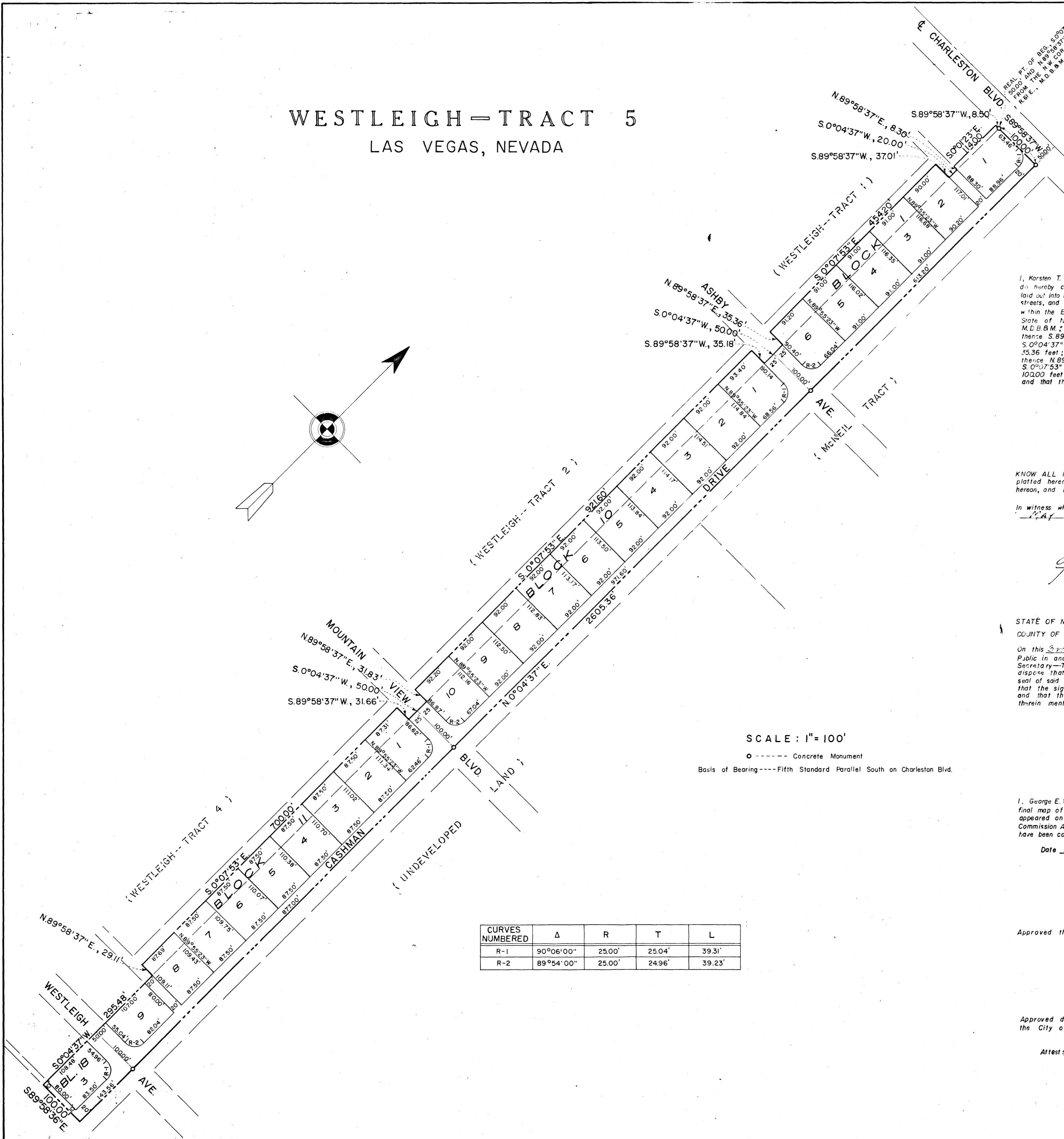
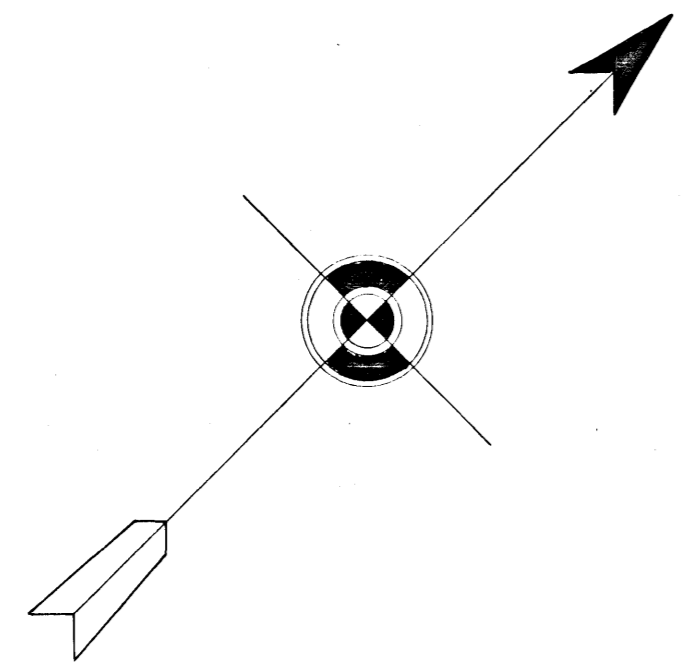


WESTLEIGH-TRACT 5 LAS VEGAS, NEVADA

A PORTION OF THE NW 1/4
SEC. 5, T.21 S., R.6 E., M.D.B. & M.
CLARK COUNTY, NEVADA



ENGINEER'S CERTIFICATE

I, Karsten T. Bronken, a duly registered professional engineer and licensed land surveyor in the State of Nevada, do hereby certify that this plat is a true and accurate map of the land surveyed under my direct supervision and laid out into blocks, lots, streets, and alleys at the instance of the Federal Development Co.; that the location of said blocks, lots, streets, and alleys have been definitely established and perpetuated in strict accordance with the law and as shown hereon within the East half of the Northwest quarter of Section 5, T.21 S., R.6 E., M.D.B. & M. in the City of Las Vegas, Clark County, State of Nevada, and more particularly described as follows: commencing at the N.W. Corner of Sec. 5, T.21 S., R.6 E., M.D.B. & M.; thence S.0°07'53" E. 50.00 feet; thence N.89°58'37" E. 1223.50 feet to the real point of beginning; thence S.89°58'37" W. 8.50 feet; thence S.0°01'23" E. 114.00 feet; thence N.89°58'37" W. 8.30 feet; thence S.0°04'37" E. 20.00 feet; thence S.89°58'37" W. 37.01 feet; thence S.0°07'53" E. 454.20 feet; thence N.89°58'37" E. 35.36 feet; thence S.0°04'37" E. 50.00 feet; thence S.89°58'37" W. 35.18 feet; thence S.0°07'53" E. 921.60 feet; thence N.89°58'37" W. 31.83 feet; thence S.0°04'37" W. 50.00 feet; thence S.89°58'37" W. 31.66 feet; thence S.0°07'53" E. 700.00 feet; thence N.89°58'37" E. 29.11 feet; thence S.0°04'37" W. 295.88 feet; thence S.89°58'37" E. 100.00 feet; thence N.0°04'37" E. 2605.36 feet; thence S.89°58'37" W. 100.00 feet to the point of beginning; and that the survey was completed April 24, 1954.

Registered Professional Engineer and Licensed Land Surveyor, Nevada Certificate No. 618

OWNER'S CERTIFICATE AND DEDICATION

KNOW ALL MEN BY THESE PRESENTS, that the Westleigh Development Company, a Nevada Corp., owner of the property platted hereon, has caused the same to be surveyed and platted into blocks, lots, streets, and alleys as shown hereon, and hereby dedicates the streets and alleys as shown to and for the use of the public forever.

In witness whereof we have hereto set our hands and affixed the Corporate Seal this 3 day of May, 1955.

DEVELOPMENT COMPANY

Harry Domina
Secretary-Treasurer

M.C. Schroeder
President

ACKNOWLEDGMENT

STATE OF NEVADA }
COUNTY OF CLARK } ss

On this 3rd day of May, 1955, personally appeared before me, the undersigned, a Notary Public in and for said County and State, M.C. Schroeder and Harry Domina known to me to be the President and Secretary-Treasurer of the Corporation that executed the foregoing instrument, and upon oath, did each declare that he is the officer of the said Corporation as above designated; that he is acquainted with the seal of said Corporation and that the seal affixed to said instrument is the Corporate seal of said Corporation; that the signatures to said instrument were made by officers of said Corporation as indicated after said signature; and that the said Corporation executed the said instrument freely and voluntarily and for the uses and purposes therein mentioned.

M.C. Schroeder
Notary Public in and for said County and State
My commission expires 2-26-1955

CITY ENGINEER'S CERTIFICATE

I, George E. Wade, City Engineer of the City of Las Vegas, Nevada, do hereby certify that I have examined the final map of WESTLEIGH-TRACT 5, that the subdivision as shown hereon is substantially the same as it appeared on the tentative map, and approved alterations thereof, that all provisions of the Planning Commission Act and any local ordinances applicable at the time of the approval of the tentative map have been complied with, and that I am satisfied that this map is technically correct.

Date _____
George E. Wade
George E. Wade, City Engineer
Reg. Prof. Engr. Nevada Cert. No. 280

APPROVALS

Approved this 13th day of May, 1954 by the Regional Planning Commission of Clark County, Nevada.
L.J. Stewart
Chairman

Approved and accepted this 4th day of May, 1955 by the Board of Commissioners of the City of Las Vegas, Clark County, Nevada.

Attest: *Avery J. Alexander*
City Clerk
C.O. Bacon
Mayor

SCALE: 1"=100'

○ --- Concrete Monument
Basis of Bearing --- Fifth Standard Parallel South on Charleston Blvd.

CURVES NUMBERED	Δ	R	T	L
R-1	90°06'00"	25.00'	25.04'	39.31'
R-2	89°54'00"	25.00'	24.96'	39.23'

Westleigh # 5 (C-11)