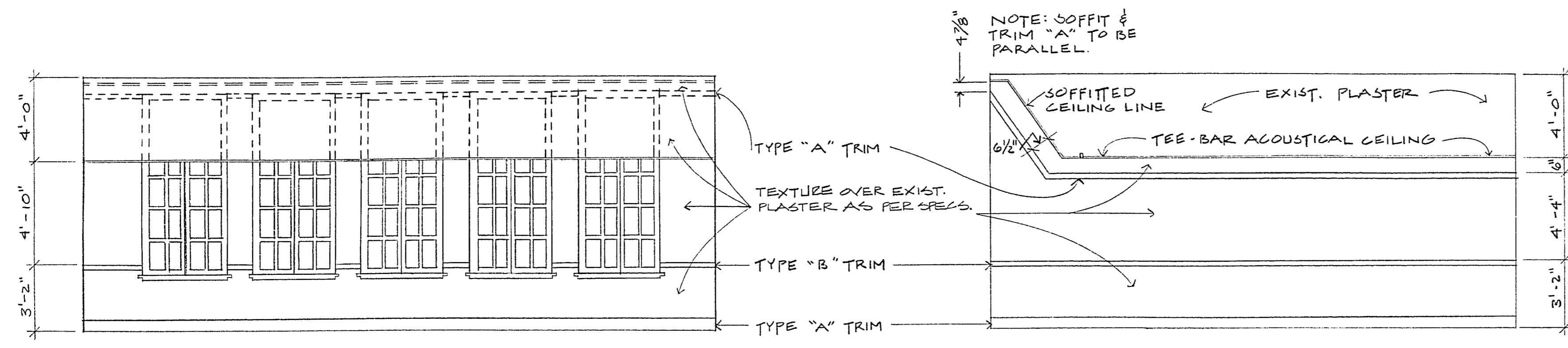
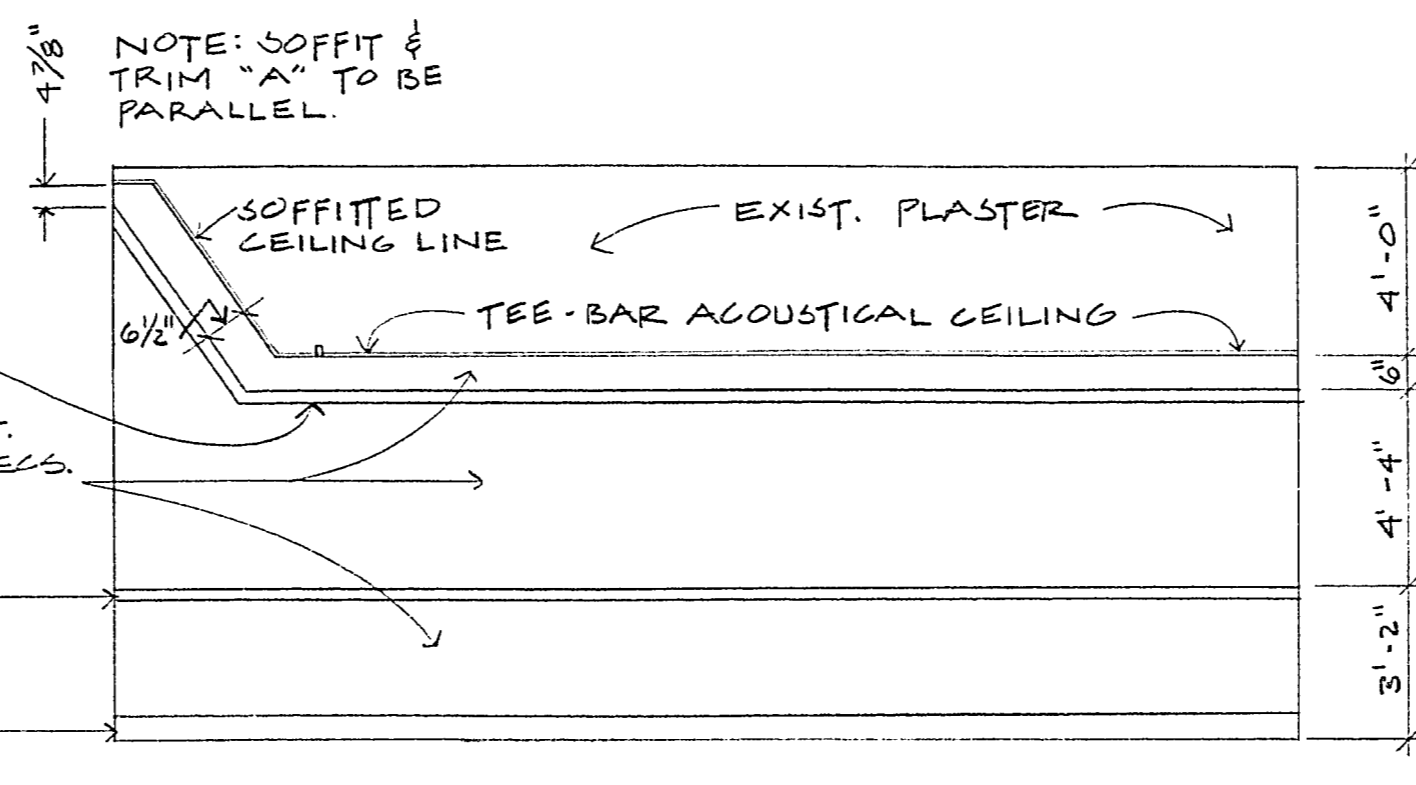


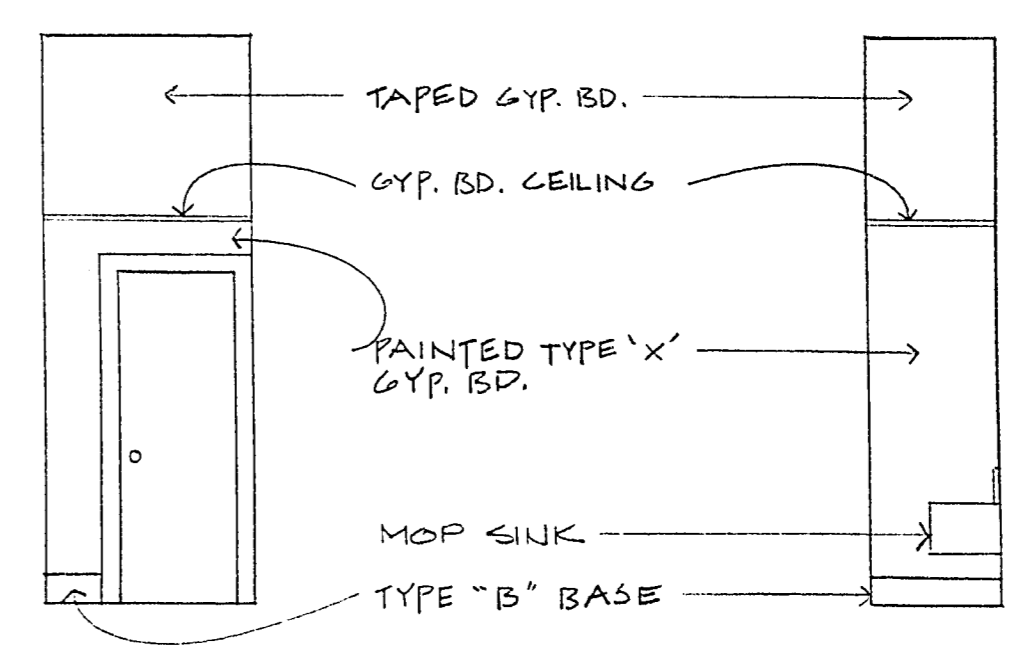
City of Las Vegas, Nevada
 Office of Architectural
 Services and Project Control
 Don J. Saylor A.I.P. Deputy City Manager



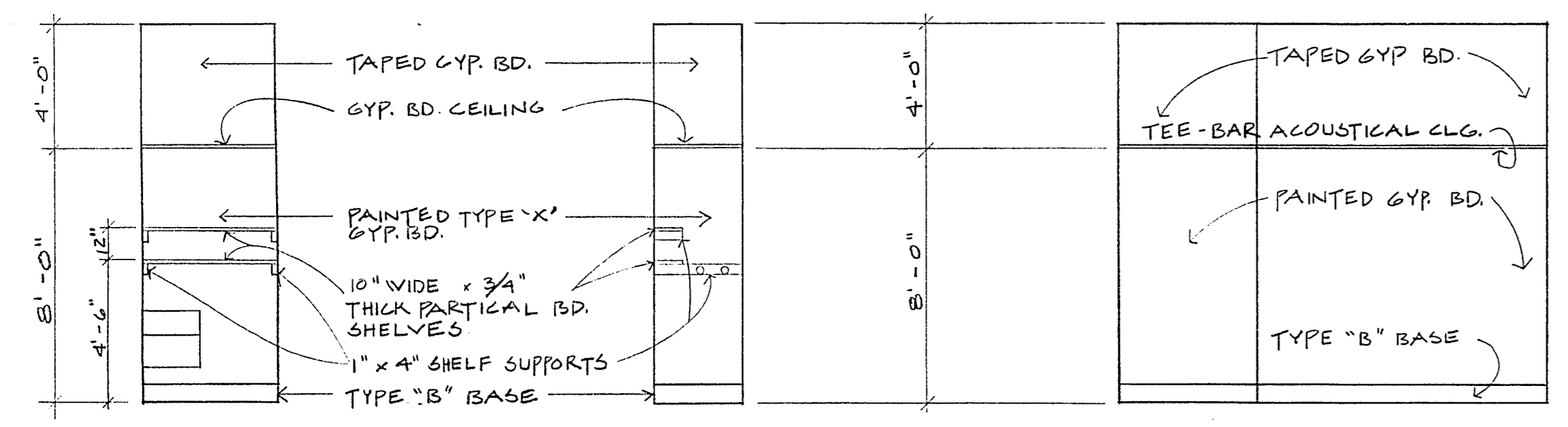
ROOM 17 EAST
 SCALE: 1/4" = 1'-0"



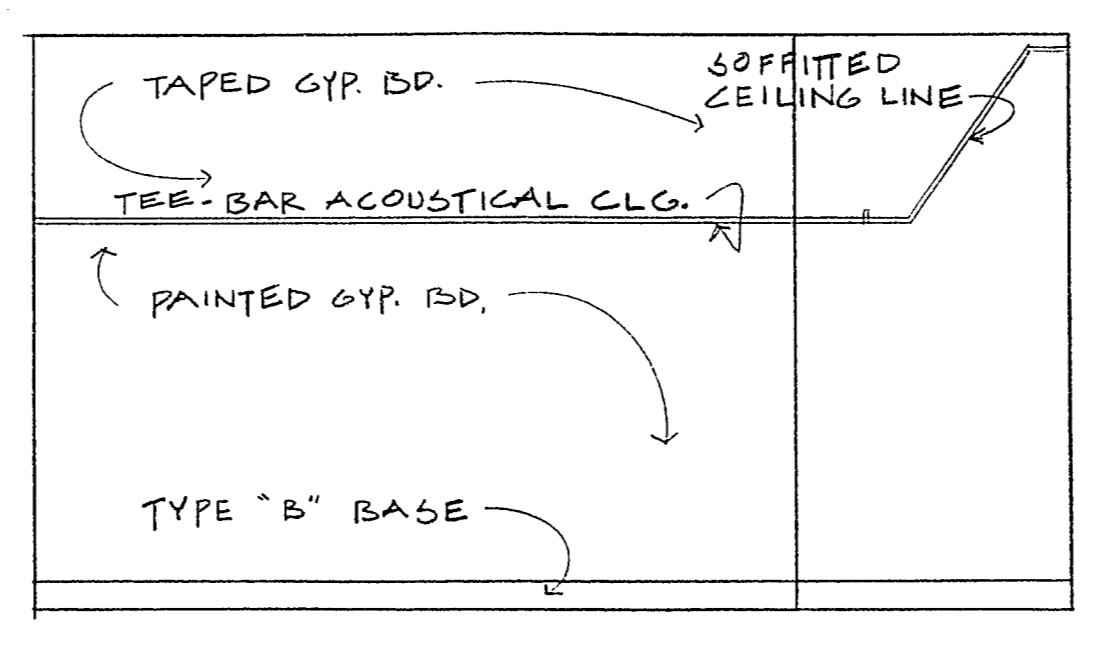
ROOM 17 SOUTH
 SCALE: 1/4" = 1'-0"



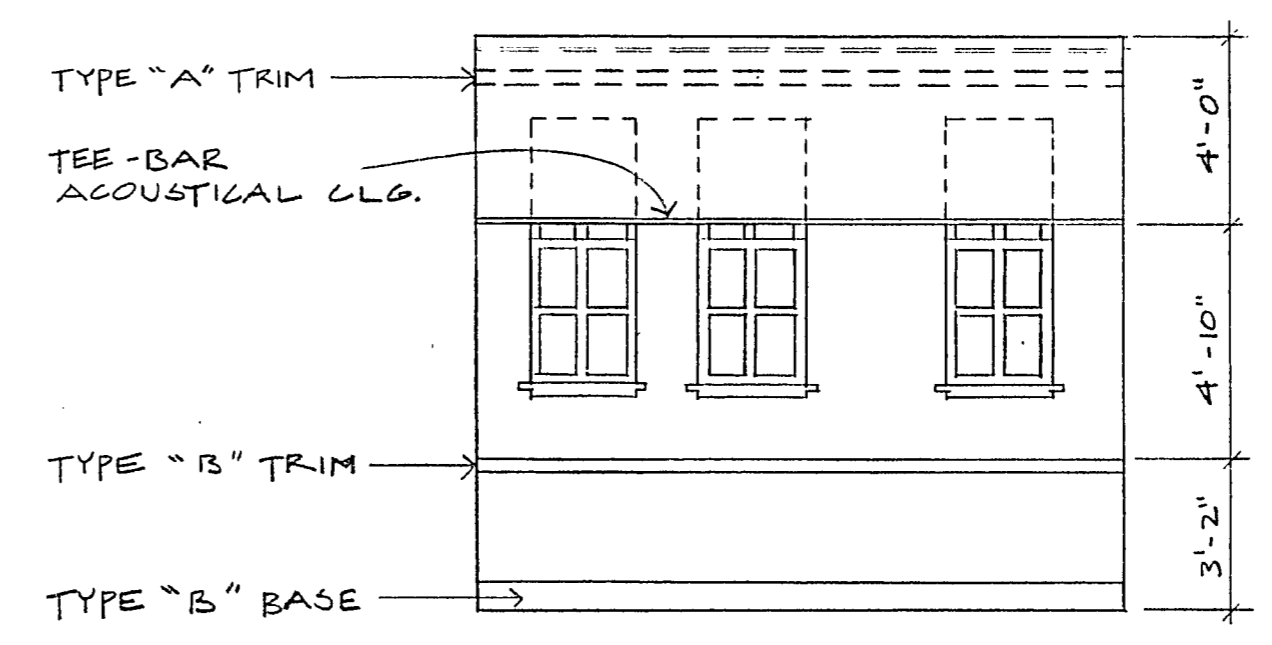
ROOM 18 WEST ROOM 18 NORTH
 SCALE: 1/4" = 1'-0"



ROOM 18 EAST ROOM 18 SOUTH
 SCALE: 1/4" = 1'-0"

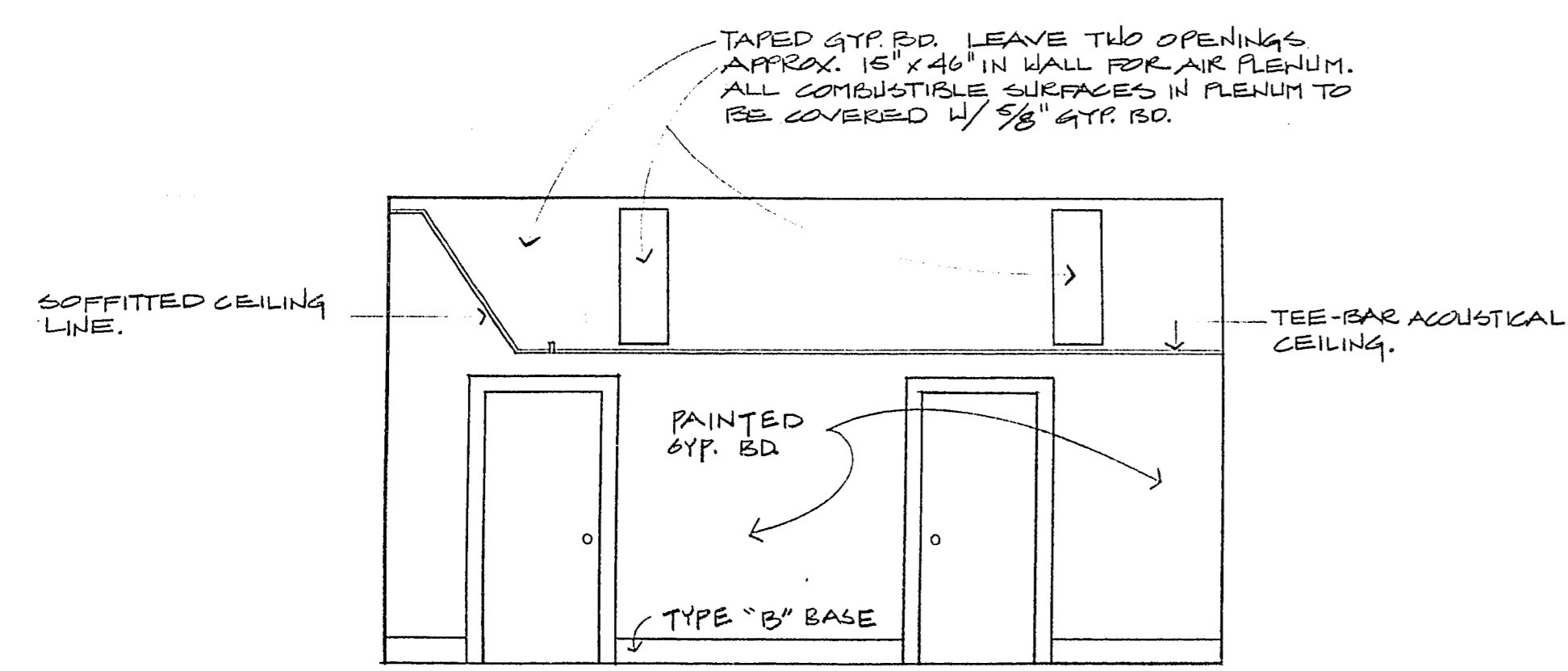


ROOM 19 WEST ROOM 19 NORTH
 SCALE: 1/4" = 1'-0"

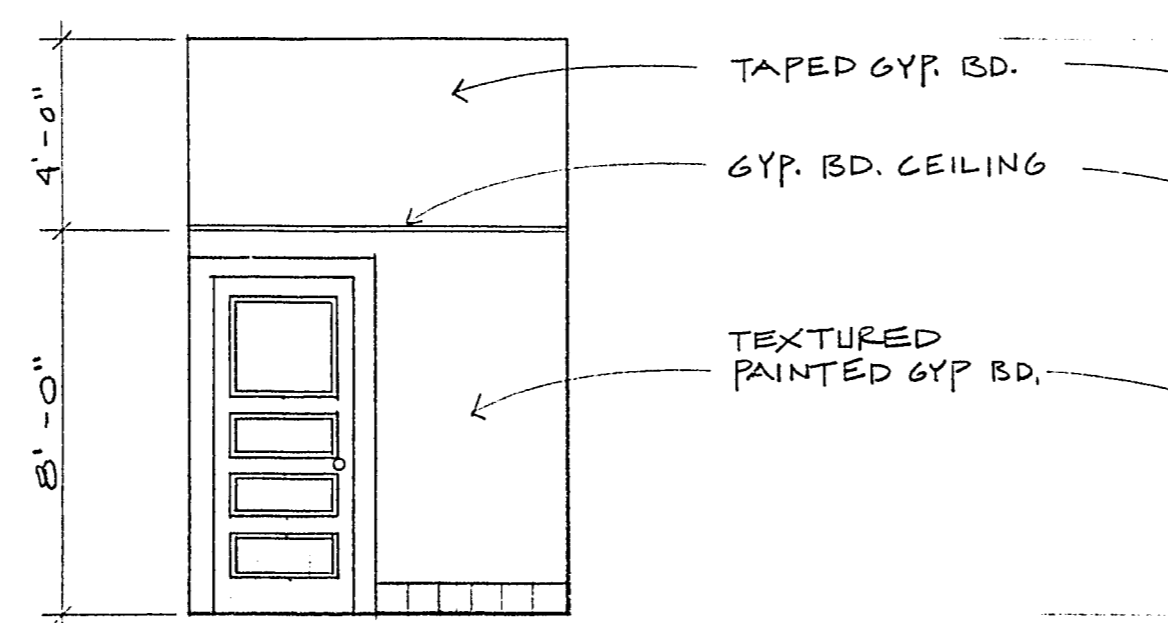


ROOM 19 EAST
 SCALE: 1/4" = 1'-0"

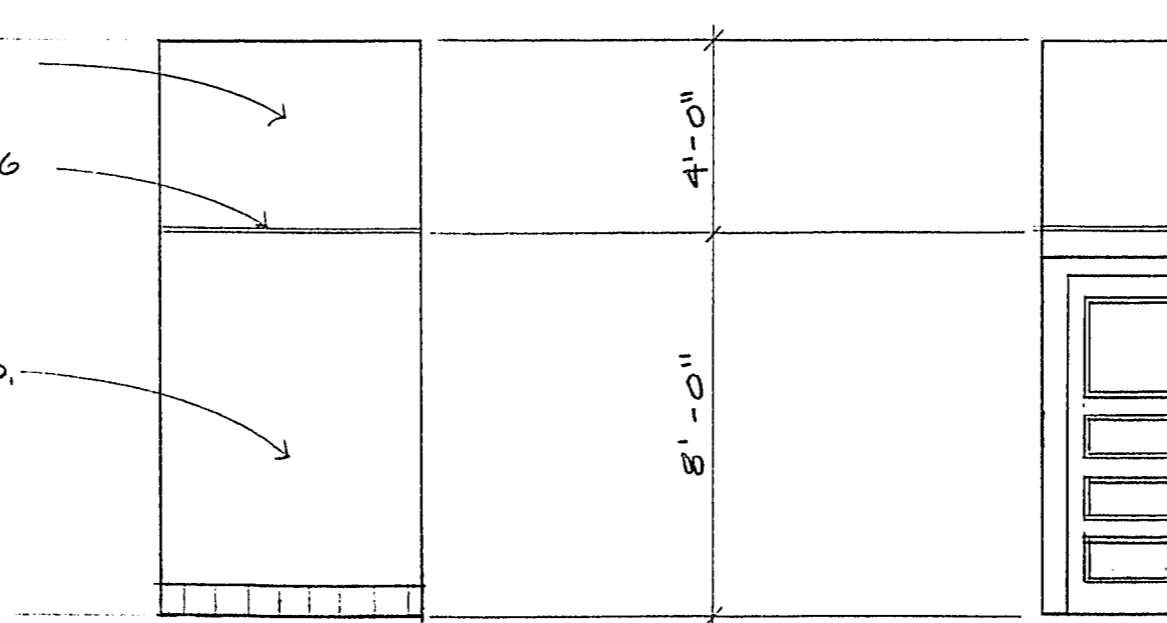
ROOM 20 CERAMIC TILE: TILE OVER 5/8" GYP. BD. TILE TO BE AMERICAN OLEAN PRIMITIVE ENCORE GLAZED TILE. FLOOR TO BE 8" x 8" #805 SEAL COLOR. BASE TO BE PA-3841 IN #805 SEAL COLOR. GROUT COLOR TO BE MEDIUM BROWN AS APPROVED BY OWNER.



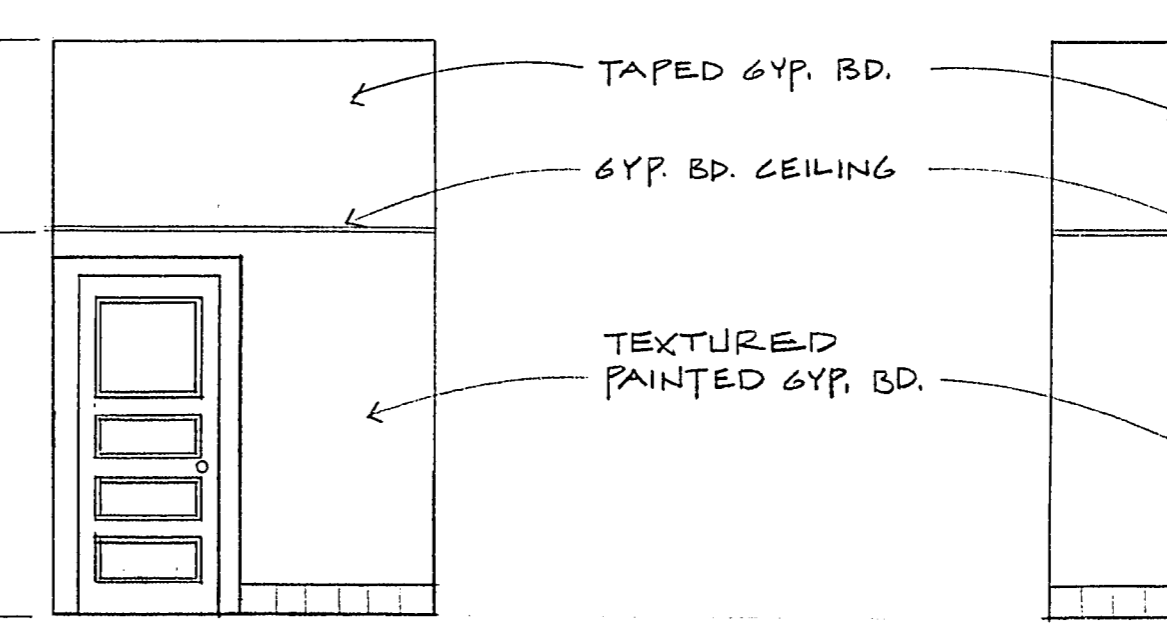
ROOM 19 SOUTH
 SCALE: 1/4" = 1'-0"



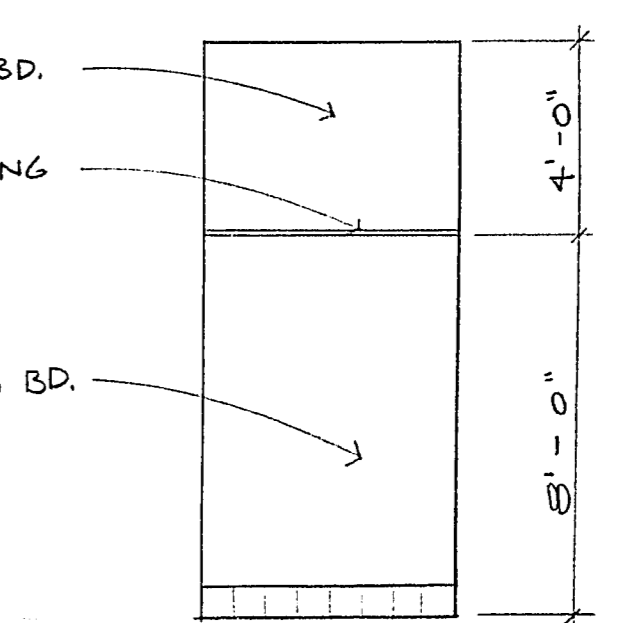
ROOM 20 WEST
 SCALE: 1/4" = 1'-0"



ROOM 20 NORTH
 SCALE: 1/4" = 1'-0"



ROOM 20 EAST
 SCALE: 1/4" = 1'-0"



ROOM 20 SOUTH
 SCALE: 1/4" = 1'-0"

WEST SIDE SCHOOL RENOVATION
 INTERIOR ELEVATIONS

Design By: E. RILEY	Date: 8-82	Reviewed By:	Date:
Drawn By: F. TRUJANO	Date: 8-82	Reviewed By:	Date:
Division: TECHNICAL SERVICES	Scale: 1/4" = 1'-0"		

AS BUILT

CONTRACT DRAWING
 NOV 3 0 1982

PROFESSIONAL ENGINEER
 CHARLES GILBERT
 CIVIL
 11-18-82

Sheet 17
 5/13/82
 11-18-82
 of 57