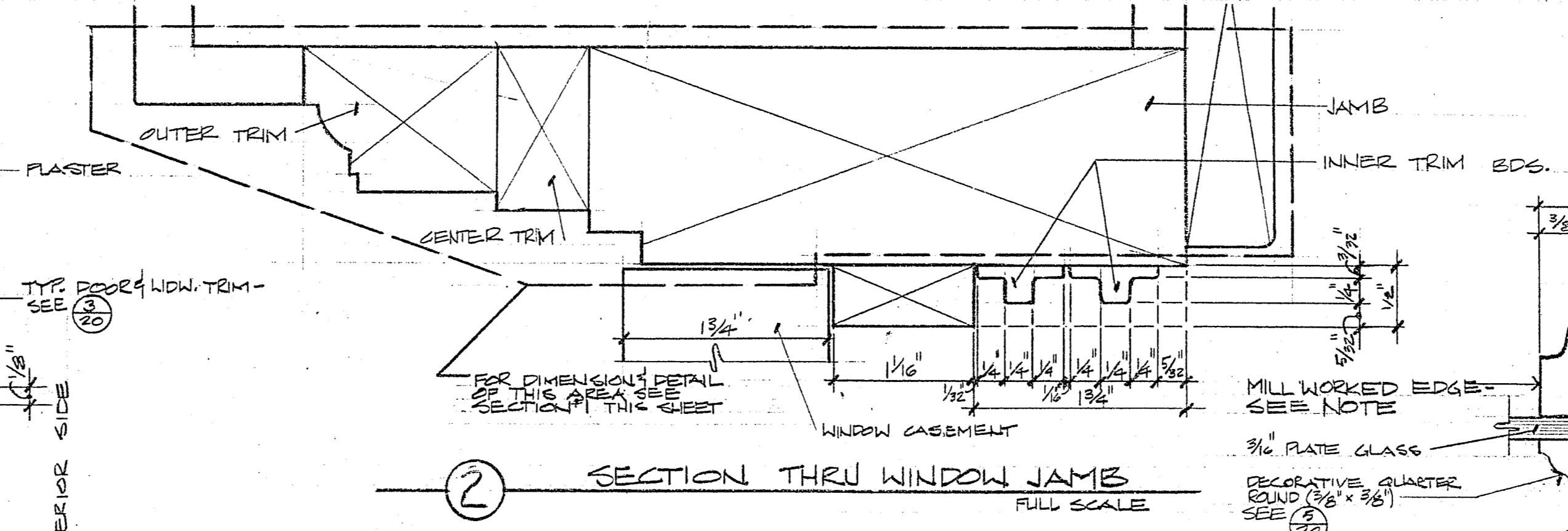
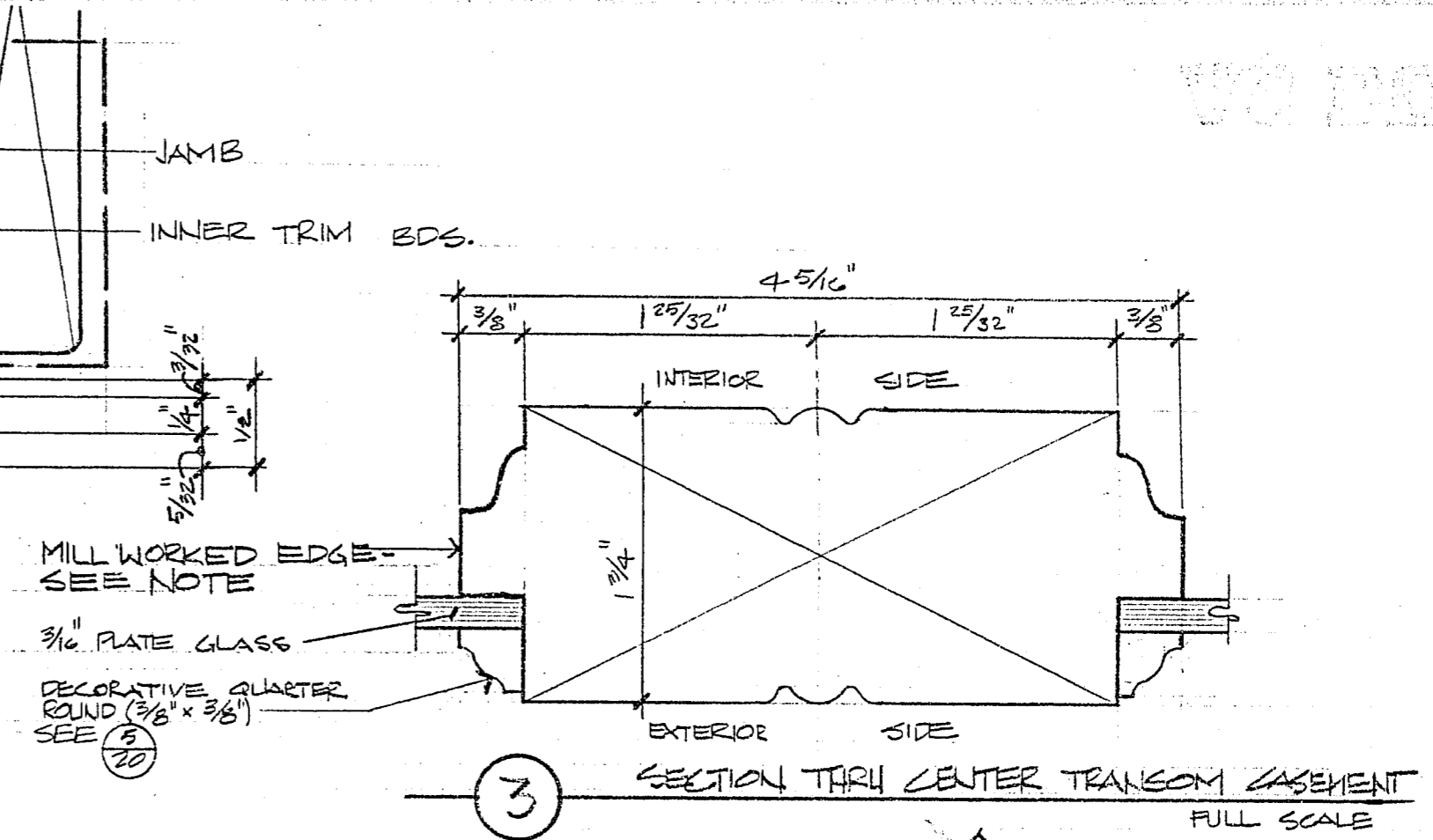


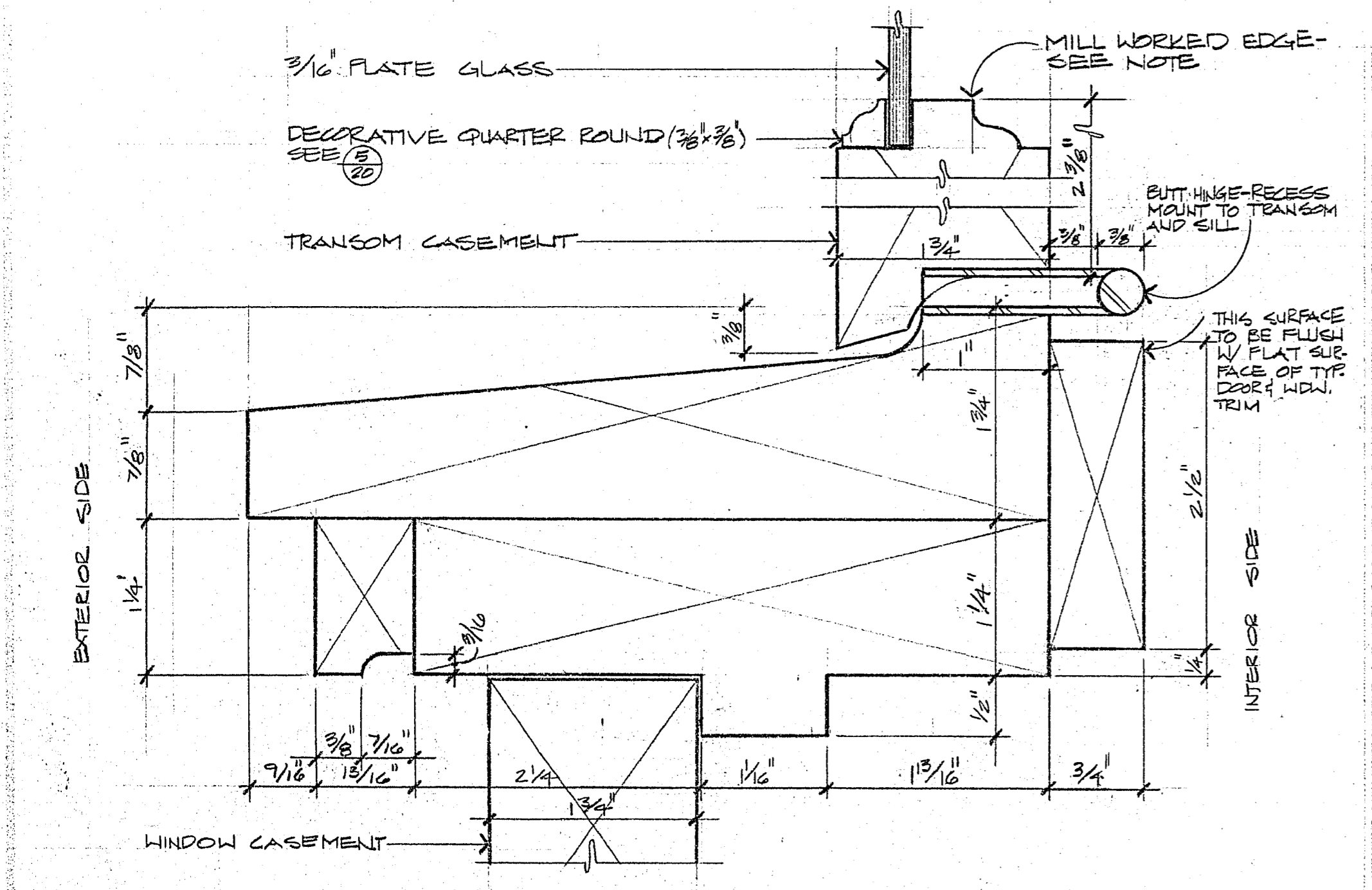
1 SECTION THRU TRANSOM HEADER  
SECTION THRU TRANSOM JAMB FULL SCALE



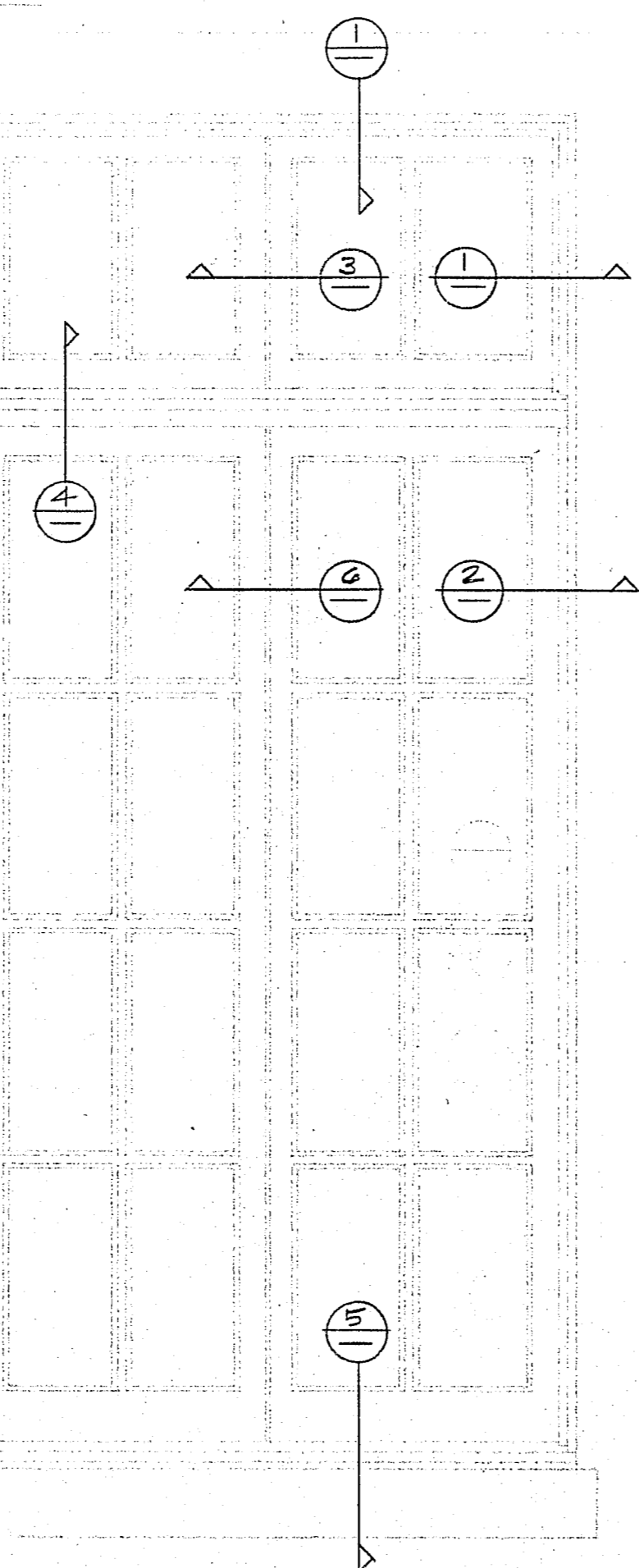
2 SECTION THRU WINDOW JAMB FULL SCALE



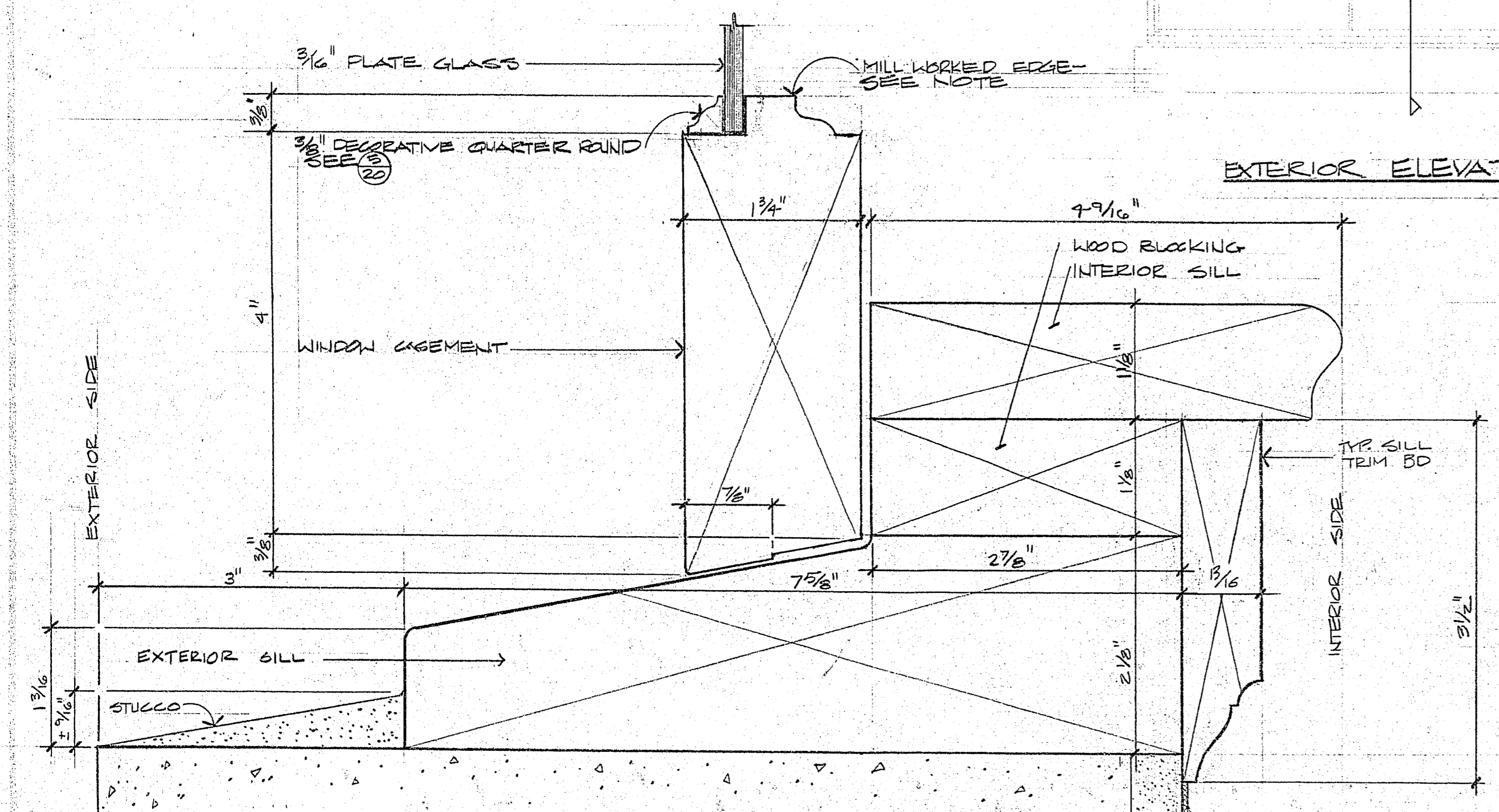
3 SECTION THRU CENTER TRANSOM CASEMENT FULL SCALE



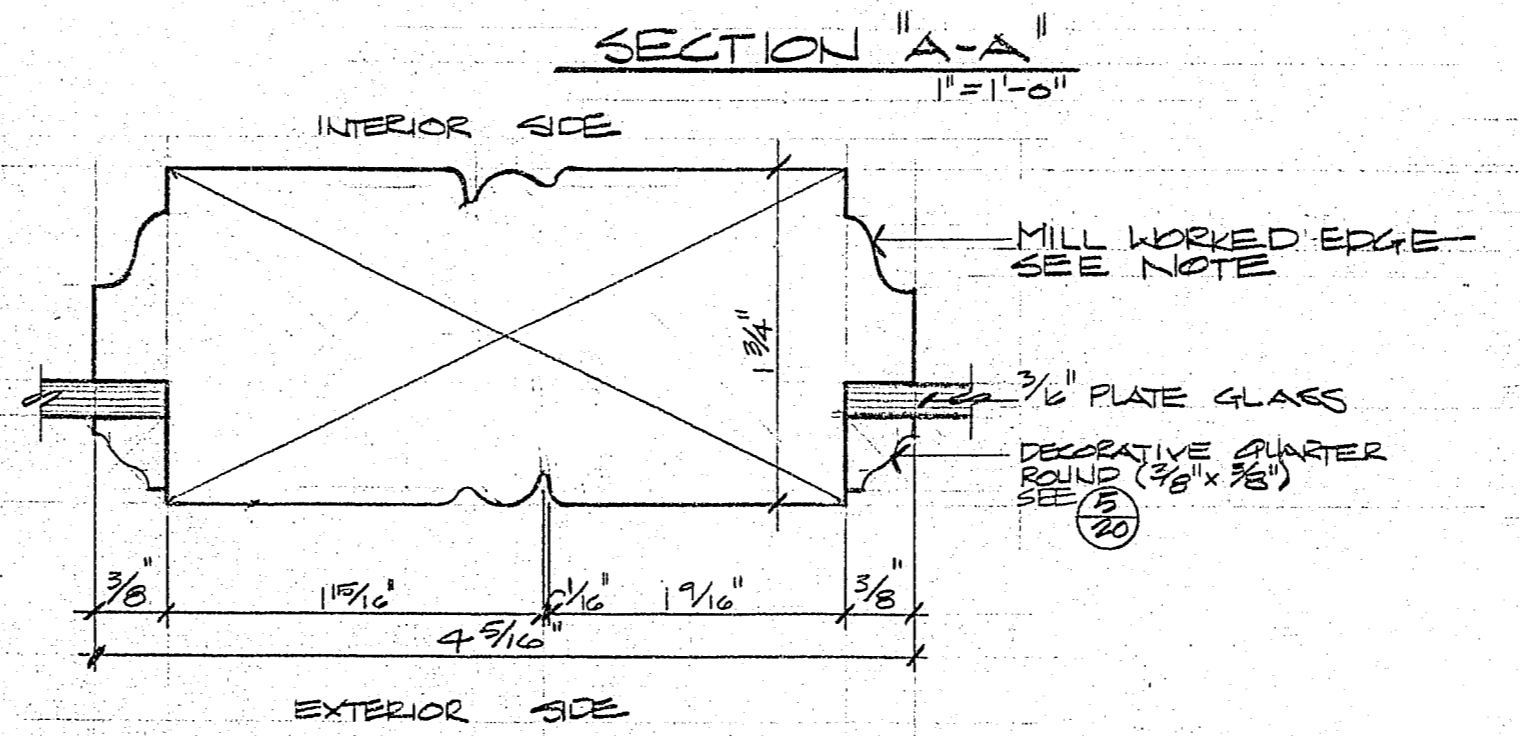
4 SECTION THRU TRANSOM SILL FULL SCALE



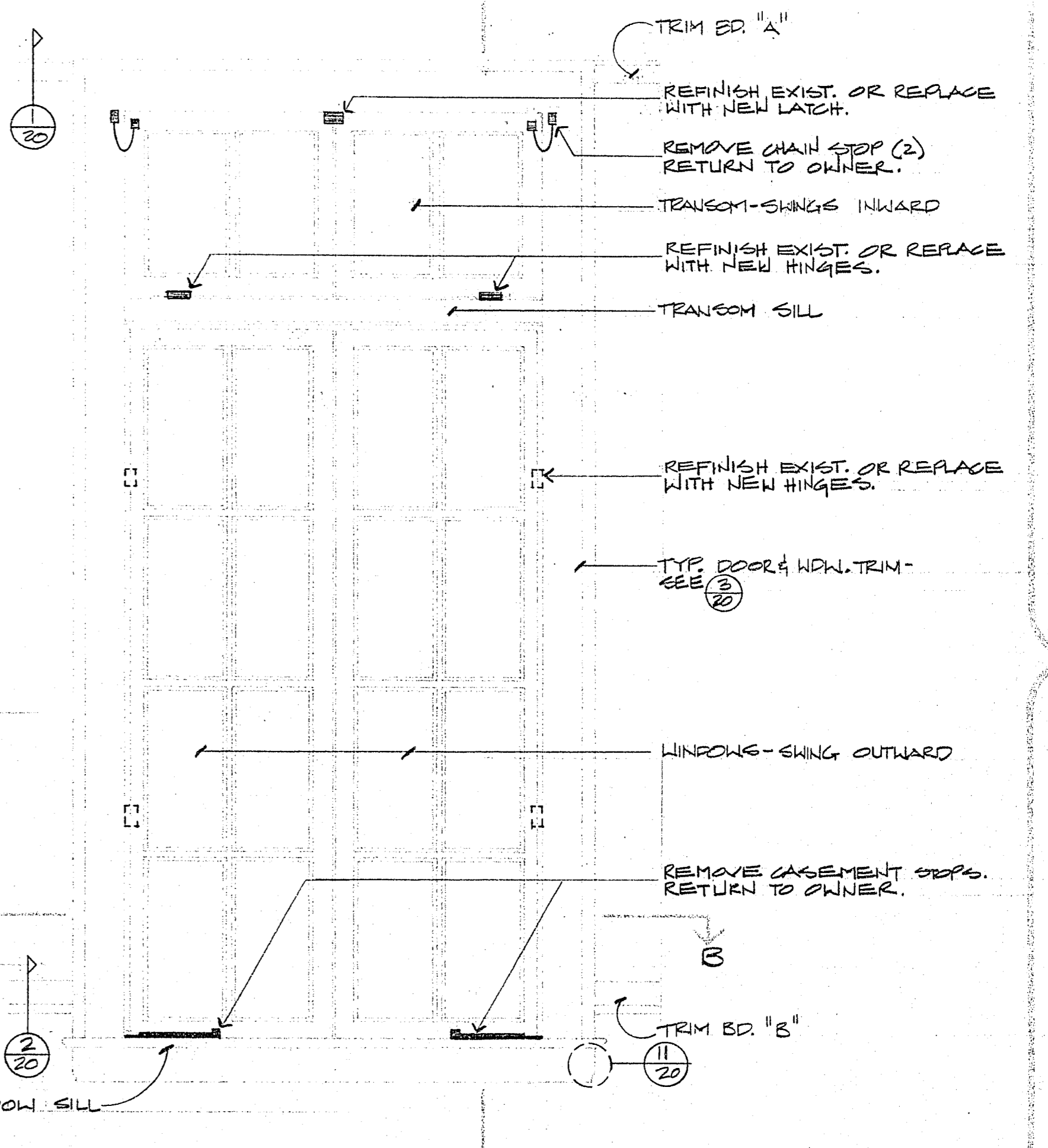
EXTERIOR ELEVATION 1"=1'-0"



5 SECTION THRU WINDOW SILL FULL SCALE



6 SECTION THRU CENTER WINDOW CASEMENT FULL SCALE



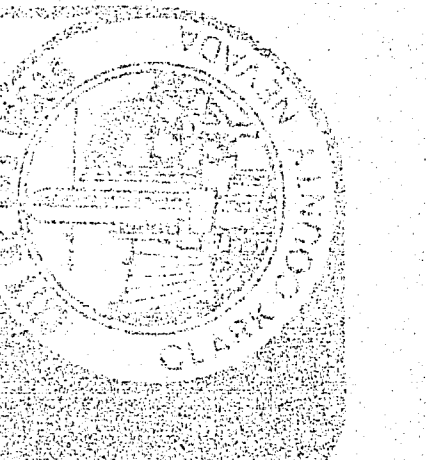
INTERIOR ELEVATION 1"=1'-0"

**NOTE**

MILL WORK ON WINDOW AND TRANSOM CASEMENTS AND MULLIONS VARIES. SEE INDIVIDUAL WINDOW ELEVATION SHEETS 25 THRU 31

CONTRACT DRAWING  
NOV 30 1982

PROFESSIONAL ENGINEER  
CHARLES GIBBS  
CIVIL  
No. 05977  
11-18-82



City of Las Vegas, Nevada  
Office of Architectural Services and Project Control  
Don J. Sawyer, A.I.A., Deputy City Manager

WEST SIDE SCHOOL RENOVATION  
WINDOW TYPE 'A' DIMENSION & DETAIL  
DESIGNED BY: BRUEGG  
DRAWN BY: J.J.  
CHECKED BY: J.J.  
DATE: 8-82  
REVISION: 8-82

35  
53-53  
11/18/82  
1-37