


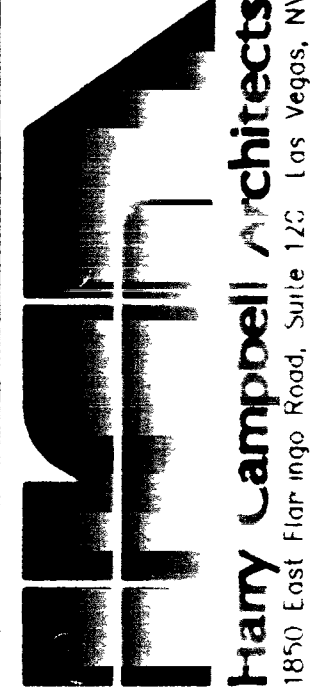
Revisions	

CONSULTING ENGINEERS



JBA ENGINEERS
 1000 S. MAIN ST. SUITE 100
 LAS VEGAS, NV 89101
 (702) 731-0863

Harry Campbell Architects



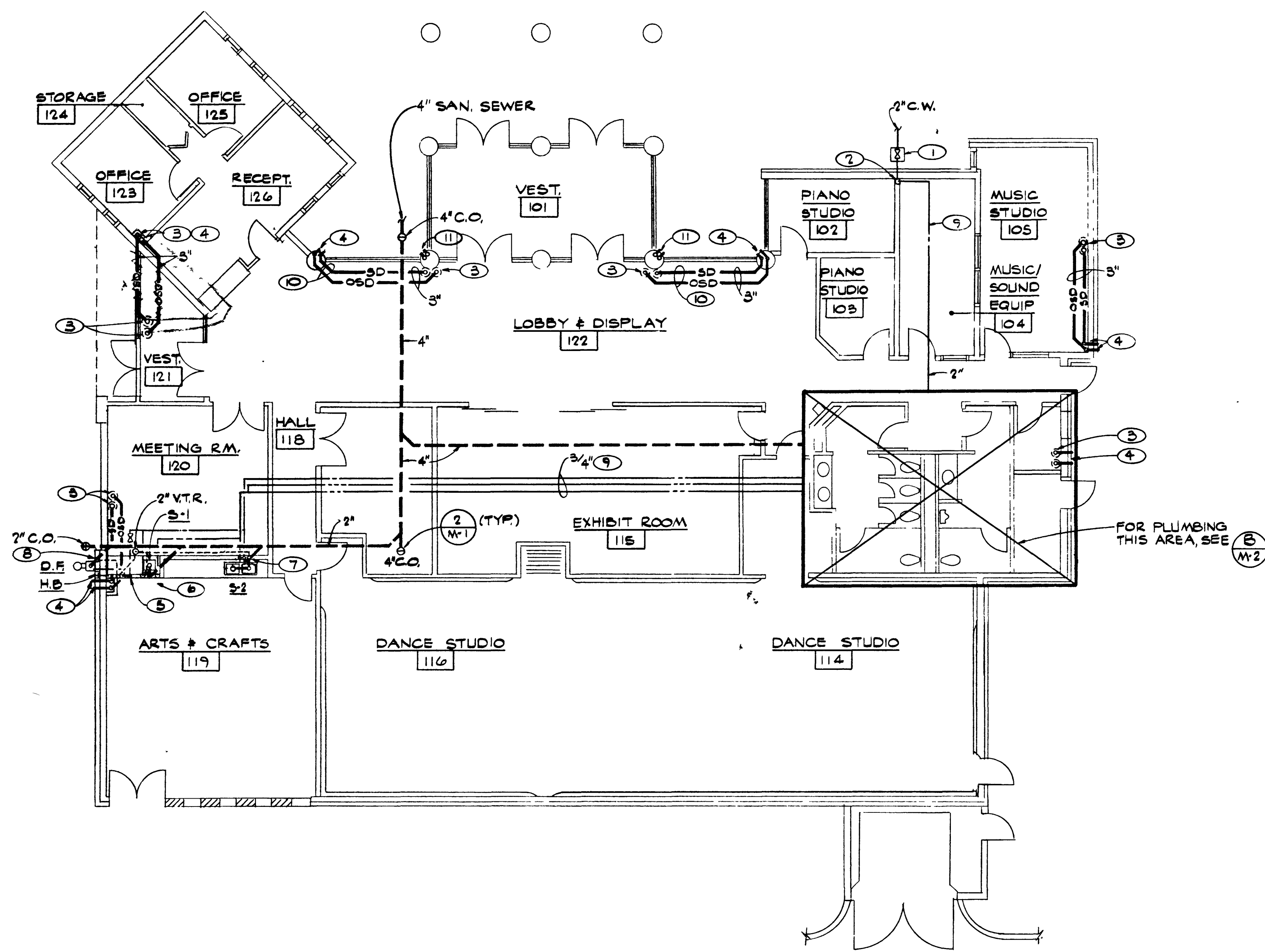
1890 East Flamingo Road, Suite 100, Las Vegas, NV 89119
 (702) 731-0863 Fax (702) 731-9286

Do Not Scale This Drawing
 The Engineer's Seal, Expiration Date, and State Remain the Property of the Design Professional

WEST LAS VEGAS ARTS CENTER
 DOOLITTLE PARK - LAS VEGAS, NEVADA

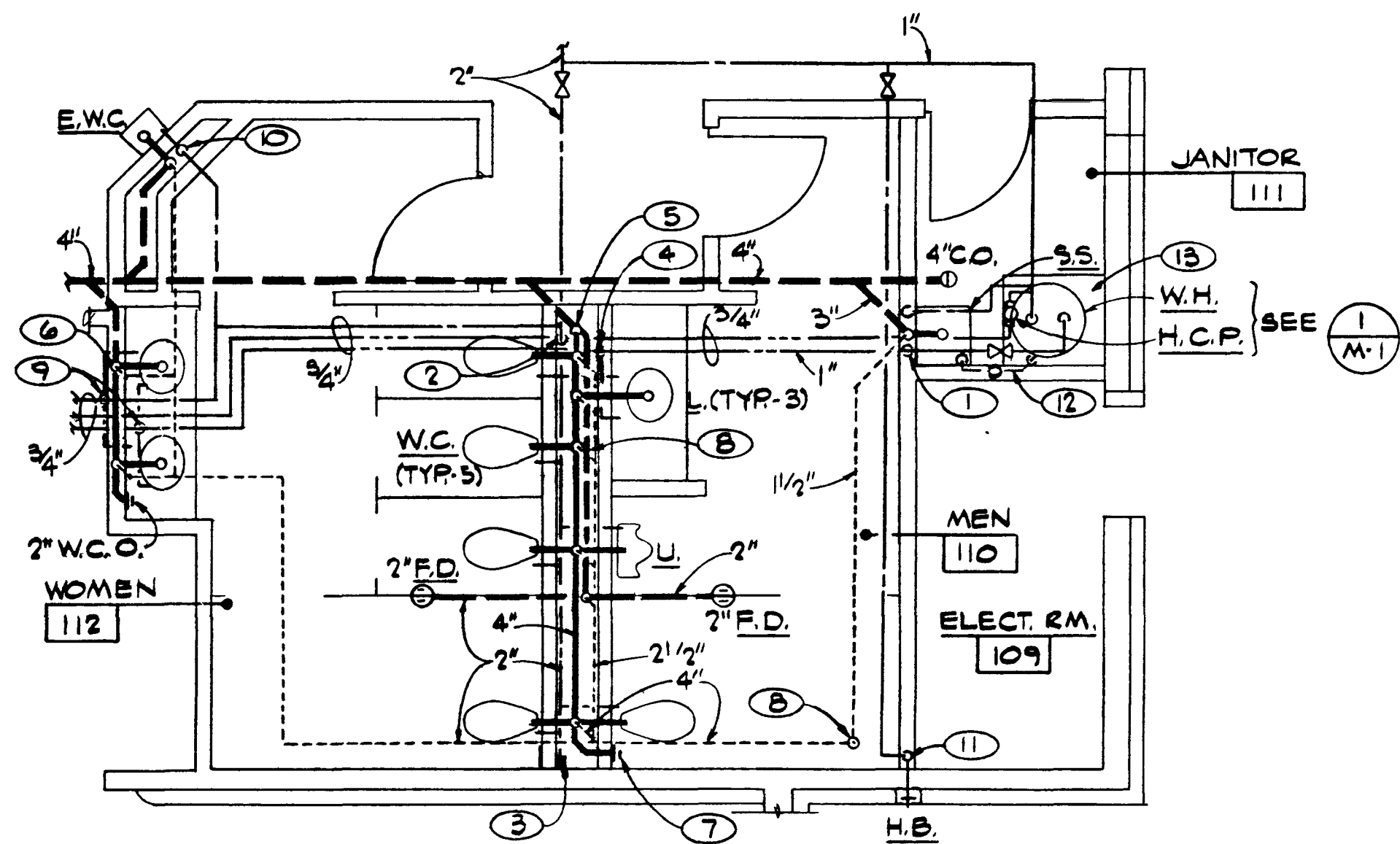
PLUMBING FLOOR PLAN & PART PLAN
AS-BUILT

Project	WEST LAS VEGAS ARTS CENTER
Date	8-12-93
Drawn By	DLE
Checked By	DGK
Project No	92160
Scale	1/8"=1'-0"
Sheet No	M-2



- NOTES**
- 2" S.O.V. IN YARD BOX.
 - 2" C.W. UP IN WALL.
 - 3" R.D. & 3" O.S.D. ABV.
 - 3" S.D. & 3" O.S.D. DN. IN CHASE, DAYLIGHT 6" ABOVE FINISHED GRADE.
 - 1/2" C.W. DN. IN WALL, 1/2" C.W. TO H.B. & 1/2" C.W. - BELOW GRADE TO BE.
 - 1/2" H. & C.W. DN., 2" W. DN. W/ W.C.O., 1-1/2" V. UP.
 - 1/2" H. & C.W. DN. (2) 1-1/2" W. TO 2" W. DN. W/ W.C.O.
 - 1-1/2" V. UNDER GRADE & UP IN WALL.
 - HOLD PIPING TIGHT AS POSSIBLE TO STRUCTURE.
 - S.D. & O.S.D. PIPING IN JOIST SPACE.
 - 3" S.D. & O.S.D. DN. IN CHASE, DAYLIGHT 6" ABOVE FINISHED GRADE.

PLUMBING FLOOR PLAN (A)
 1/8"=1'-0" M-2



- NOTES**
- 1/2" H. & C.W. DN., 1-1/2" V. UP, 3" W.
 - 2" C.W. DN. TO 2" HEADER
 - 2" WATER HAMMER ARRESTOR W/ ACCESS PANEL IN WALL.
 - 1/2" H.W. DN. TO L.
 - 4" W. DN. TO BELOW FLOOR.
 - 2" W. DN. TO BELOW FLOOR.
 - 4" W.C.O.
 - 4" V.T.R.
 - 3/4" H. & C.W. DN. IN WALL
 - 1/2" C.W. DN., 1-1/2" V. UP, 2" W. DN.
 - 1/2" C.W. DN. TO H.B.
 - EXTEND T & P RELIEF VALVE FULL SIZE TO TERM OVER S.S. W/ 90° ELBOW
 - 4" CONCRETE HOUSEKEEPING PAD.

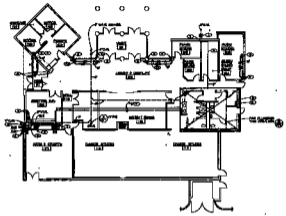
Lawrence E. Jones
 anytime plumbing inc
 12-9-94

PLUMBING PART PLAN (B)
 1/4"=1'-0" M-2

cen
 Neceary/Amplison
 3 FEB 95

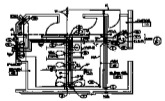


WEST LAS VEGAS ARTS CENTER
 DOOLITTLE PARK - LAS VEGAS, NEVADA
 PLUMBING FLOOR PLAN & PART PLAN
 6-15-78



- NOTES**
- 1. SEE PLAN FOR
 - 2. SEE PLAN FOR
 - 3. SEE PLAN FOR
 - 4. SEE PLAN FOR
 - 5. SEE PLAN FOR
 - 6. SEE PLAN FOR
 - 7. SEE PLAN FOR
 - 8. SEE PLAN FOR
 - 9. SEE PLAN FOR
 - 10. SEE PLAN FOR
 - 11. SEE PLAN FOR
 - 12. SEE PLAN FOR
 - 13. SEE PLAN FOR
 - 14. SEE PLAN FOR
 - 15. SEE PLAN FOR
 - 16. SEE PLAN FOR
 - 17. SEE PLAN FOR
 - 18. SEE PLAN FOR
 - 19. SEE PLAN FOR
 - 20. SEE PLAN FOR

PLUMBING FLOOR PLAN



- NOTES**
- 1. SEE PLAN FOR
 - 2. SEE PLAN FOR
 - 3. SEE PLAN FOR
 - 4. SEE PLAN FOR
 - 5. SEE PLAN FOR
 - 6. SEE PLAN FOR
 - 7. SEE PLAN FOR
 - 8. SEE PLAN FOR
 - 9. SEE PLAN FOR
 - 10. SEE PLAN FOR
 - 11. SEE PLAN FOR
 - 12. SEE PLAN FOR
 - 13. SEE PLAN FOR
 - 14. SEE PLAN FOR
 - 15. SEE PLAN FOR
 - 16. SEE PLAN FOR
 - 17. SEE PLAN FOR
 - 18. SEE PLAN FOR
 - 19. SEE PLAN FOR
 - 20. SEE PLAN FOR

James L. ...

PLUMBING PART PLAN

James L. ...