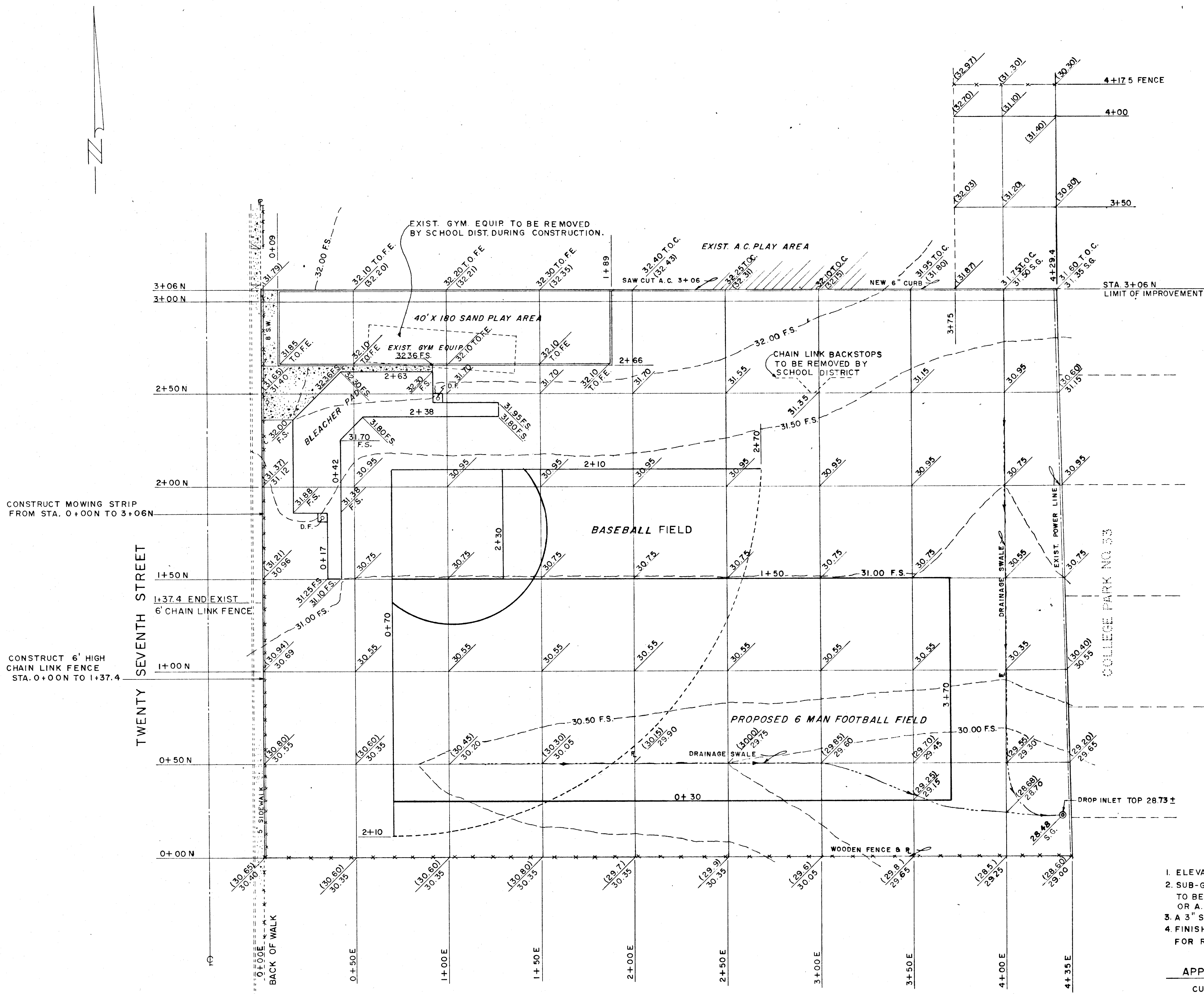


APPROXIMATE QUANTITIES THIS SHEET			
ITEM	DESCRIPTION	UNIT	QUANTITY
	MASONRY SAND - 6" PLAY AREA	C.Y.	134
	CONC. BK WALL - PLAY AREA	S.F.	852
	SAWCUT ASPHALTIC CONCRETE	L.F.	375
	SHAPE ENTIRE AREA (EMBANKMENT)	C.Y.	869
	EXCAVATION	C.Y.	97
	SILT FILL MATERIAL - 3"	C.Y.	1,112
	SEEDING (TO BE SPECIFIED)	ACRE	2.71
	4" CONC. SIDEWALKS	S.F.	1,147
	4" CONC. DIVIDER STRIP	L.F.	241
	6' CHAIN LINK FENCE	L.F.	138
	CONC. MOWING STRIP	L.F.	306
	BLEACH PAD AND BACKSTOP WITH 2 DRINKING FOUNTAINS - SEE SHT.	E.A.	1



**BENCH MARK**  
 B.M. #06125B2  
 ELEV. 1830.97  
 BRASS CAP IN T.C.  
 27<sup>th</sup> ST & TERESA AVE.

- GRADING NOTES**
- ELEVATIONS SHOWN ARE SUB-GRADE ELEVATIONS.
  - SUB-GRADING ELEVATIONS AROUND PLAYGROUND PERIMETER TO BE 3" (0.25) BELOW ADJACENT CONCRETE FOOTING OR A.C. PAVEMENT ELEVATIONS.
  - A 3" SILT MATERIAL TO COVER SUB-GRADE.
  - FINISHED SURFACE (F.S.) CONTOUR LINES ARE SHOWN FOR REFERENCE.

**APPROX. EARTHWORK QUANTITIES**

CUT	966 C.Y.
FILL	869 C.Y.
EXCESS (REMOVE)	97 C.Y.
SILT FILL - 3"	1,112 C.Y.

APPROVAL \_\_\_\_\_ DATE \_\_\_\_\_  
 COORDINATOR OF URBAN RENEWAL

APPROVAL \_\_\_\_\_ DATE \_\_\_\_\_  
 SUPT. OF RECREATION - C.L.V.

APPROVAL \_\_\_\_\_ DATE \_\_\_\_\_  
 SUPT. OF PARKS - C.L.V.

APPROVAL \_\_\_\_\_ DATE \_\_\_\_\_  
 CLARK COUNTY SCHOOL DIST.

REV. NO.	DESCRIPTION	BY	DATE	APPROVAL

**CITY OF LAS VEGAS NEVADA**  
 DEPARTMENT OF PUBLIC WORKS  
 SERVICES DIVISION

**WALTER BRACKEN SCHOOL  
 PLOT PLAN**

W.O. NO. 3062	F BK NO. 67-13 X	DATE	DRAWING NO.
SC. (H) 1" = 30'	SC. (V)		
DES.			
DR. HARPER			FILE NO.
APPROVED BY DIRECTOR OF PUBLIC WORKS			715-47D
<i>R. Harper</i>			SHEET 2 OF 3