

TYPICAL ON-SITE PAVING SECTION

NOTES:

1. MINIMUM SECTION SHOWN. ACTUAL SECTION TO BE IN COMPLIANCE WITH RECOMMENDATIONS OF SOILS ENGINEER.
2. COMPACTION OF AGGREGATE BASE AND SUBGRADE PREPARATION SHALL BE IN ACCORDANCE WITH THE "STANDARD SPECIFICATIONS".

BENCHMARK

21V01-19N6
RIVET & PLATE IN THE TC @
SW CORNER OF RANCHO DR. & LAKE
MEAD BOULEVARD
ELEV.=2177.56 FEET (NAVD 88)

TABULATION

BLDG. AREA = 4512 S.F. STORE
PARKING = 34 TOTAL
H/C PARKING = 2 EA

GRADING NOTE

ALL GRADING AND PREPARATION OF
BASE MATERIAL SHALL BE IN ACCORDANCE
WITH THE RECOMMENDATION OF THE
SOILS ENGINEER.

CURVE DATA (BACK OF CURB)

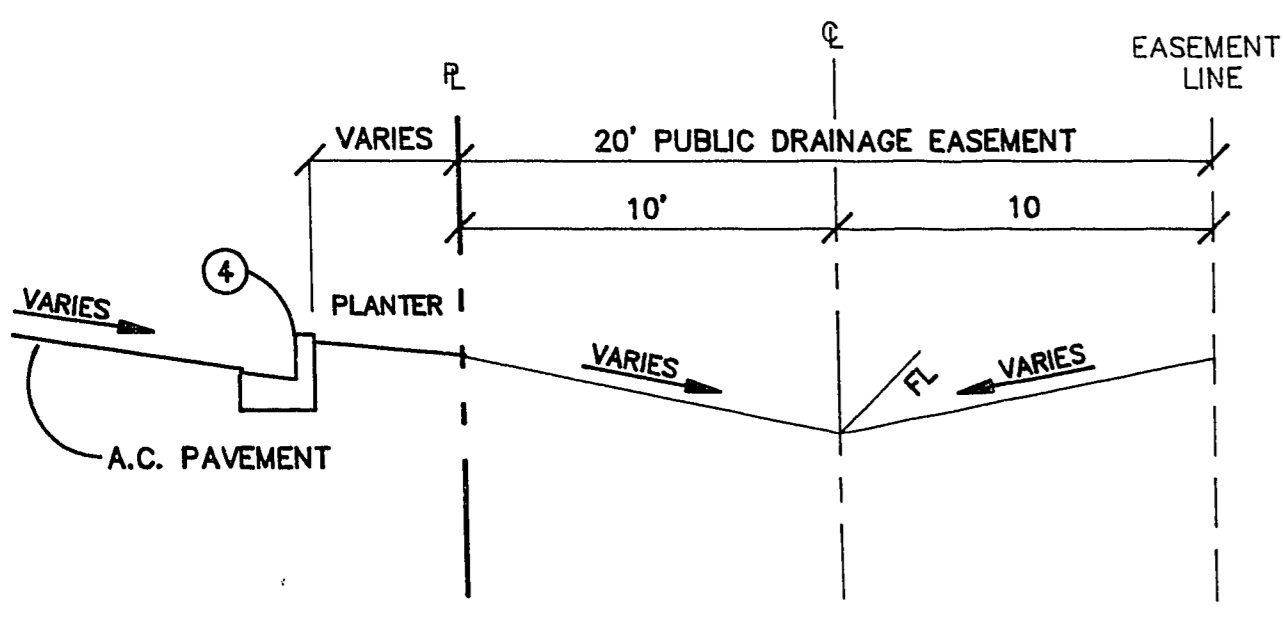
NO	DELTA	RADIUS	LENGTH	TANGENT
C1	03°59'56"	1144.50'	100.81'	50.43'
C2	70°31'42"	20.50'	25.23'	14.50'
C3	88°01'51"	25.00'	38.41'	24.16'
C4	90°51'05"	1.00'	1.59'	1.01'
C5	71°34'21"	1.00'	1.25'	0.72'
C6	00°28'23"	1442.50'	11.75'	5.87'
C7	90°11'20"	14.50'	7.87'	14.55'
C8	90°29'25"	7.12'	11.24'	7.18'
C9	88°50'37"	7.12'	11.03'	6.97'
C10	90°00'00"	2.50'	3.93'	2.50'
C11	88°17'47"	2.50'	3.85'	2.43'
C12	83°42'07"	25.00'	36.52'	22.39'
C13	90°00'00"	3.00'	4.71'	3.00'
C14	90°00'00"	15.00'	23.56'	15.00'
C15	-	-	-	-
C16	90°00'00"	11.50'	18.06'	11.50'

LINE DATA (BACK OF CURB)

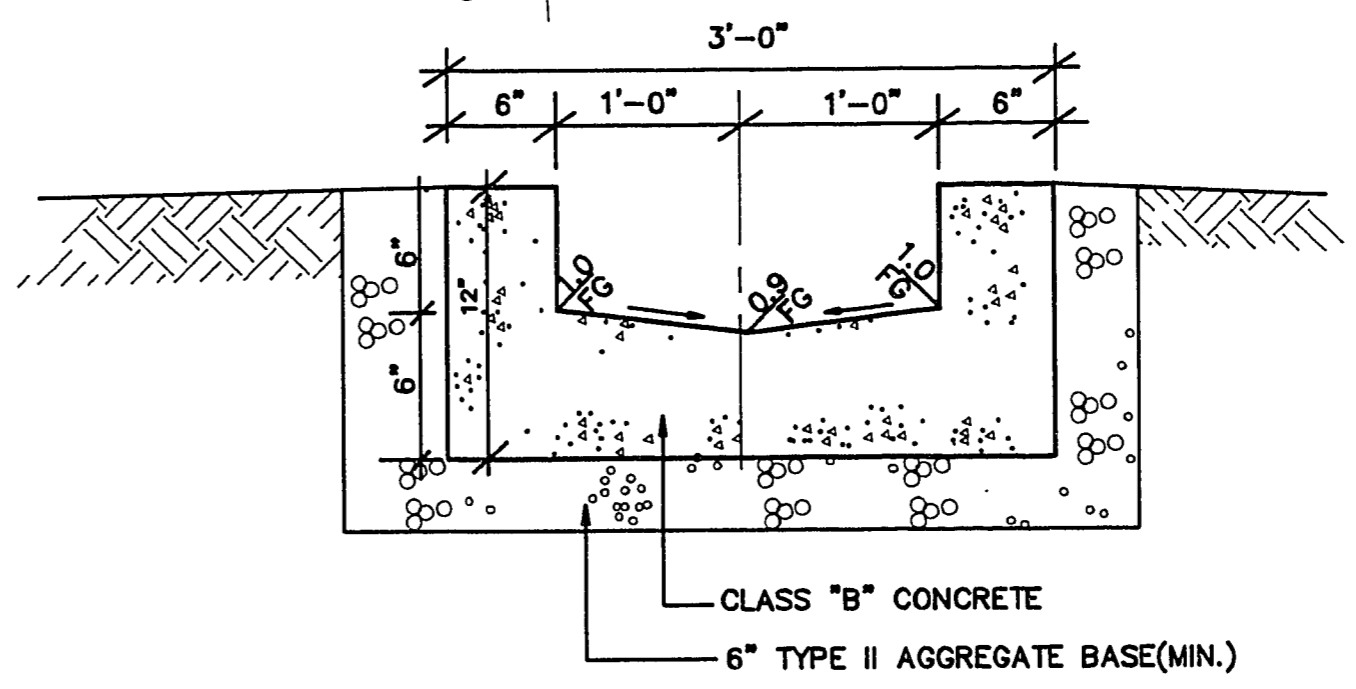
LINE	BEARINGS	DISTANCE
L1	S 20°59'52" E	5.50'
L2	S 05°36'49" E	22.83'
L3	S 53°17'58" W	4.52'

CONSTRUCTION NOTES

1. CONSTRUCT COMMERCIAL DRIVEWAY PER STD DWG NO. 222A
2. CONSTRUCT 8" CROSS GUTTER PER STD DWG NO. 228
3. CONSTRUCT 6" SIDEWALK PER STD DWG NO. 234. TAPER TO 6" SW FROM EDGE OF EXIST. SW TO STA. 0+68.34 (RANCHO DR.)
4. INSTALL 2" "L" TYPE CURB PER STD DWG NO. 216
5. INSTALL "A" TYPE CURB PER STD DWG NO. 219 (OMIT REINFORCING)
6. CONSTRUCT NEW H/C RAMP PER CC AREA STD. DWG. NO. 235, CASE I, "A"="B" "B"="B"
7. CONSTRUCT NEW H/C RAMP PER CC AREA STD. DWG. NO. 235 (CASE I, MODIFIED) "A"="CURB" "B"="B"
8. CONSTRUCT 2' CONC. CHANNEL THRU PLANTER PER DETAIL THIS SH.T.
9. CONSTRUCT 4' SIDEWALK PER STD. DWG. NO. 234
10. CONSTRUCT NEW H/C RAMP PER NDOT STD. DWG R-5.1.1.1 (613) - TYPE D, "A"="B" "B"="B"
11. CONSTRUCT 5' SIDEWALK PER STD. DWG. NO. 234
12. INSTALL PRECAST BUMPER BLOCK PER STD. DWG. NO. 238, TYP.
13. INSTALL R7-1AP AND R8-3A ON LIGHT POLE CITY OF LAS VEGAS STANDARDS.



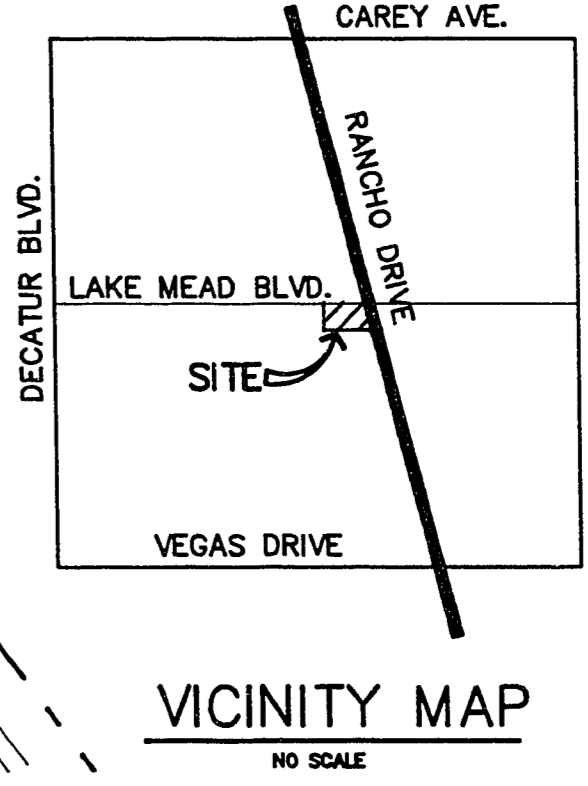
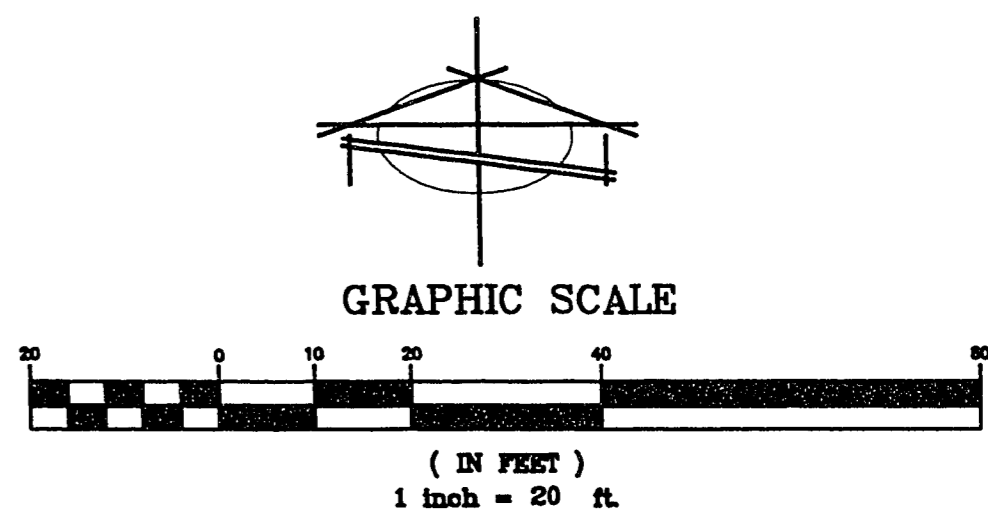
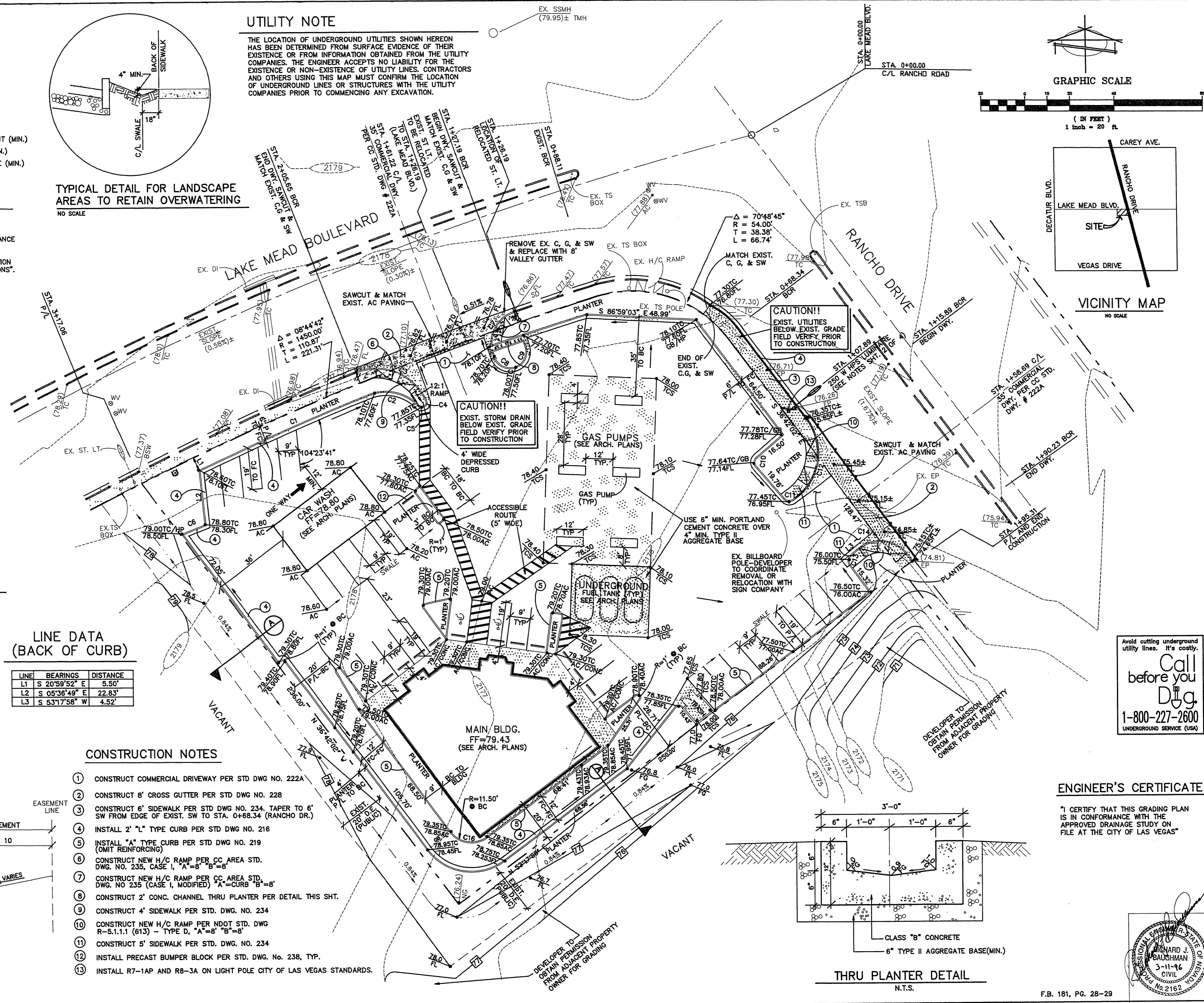
SECTION A
NTS



THRU PLANTER DETAIL
N.T.S.

UTILITY NOTE

THE LOCATION OF UNDERGROUND UTILITIES SHOWN HEREON HAS BEEN DETERMINED FROM SURFACE EVIDENCE OF THEIR EXISTENCE OR FROM INFORMATION OBTAINED FROM THE UTILITY COMPANIES. THE ENGINEER ACCEPTS NO LIABILITY FOR THE EXISTENCE OR NON-EXISTENCE OF UTILITY LINES. CONTRACTORS AND OTHERS USING THIS MAP MUST CONFIRM THE LOCATION OF UNDERGROUND LINES OR STRUCTURES WITH THE UTILITY COMPANIES PRIOR TO COMMENCING ANY EXCAVATION.

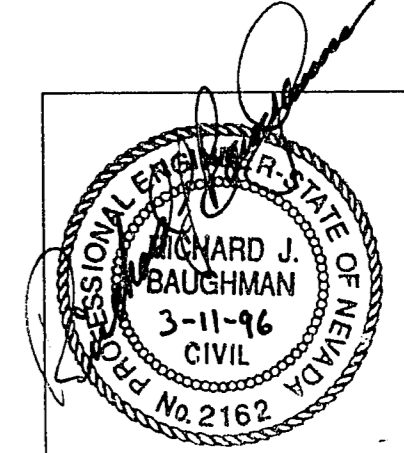


VICINITY MAP
NO SCALE

Avoid cutting underground utility lines. It's costly.
Call before you Dig.
1-800-227-2600
UNDERGROUND SERVICE (USA)

ENGINEER'S CERTIFICATE

"I CERTIFY THAT THIS GRADING PLAN IS IN CONFORMANCE WITH THE APPROVED DRAINAGE STUDY ON FILE AT THE CITY OF LAS VEGAS"



APPROVED FOR: **VILLAGE SHOPPES**

DATE: OCTOBER, 1995
DESIGN: ENR
DRAWN: JHB
CHECK: JHB
SCALE: 1" = 20'

PREPARED FOR: **BAUGHMAN & TURNER, INC.**
CIVIL ENGINEERS
1210 HINSON STREET
LAS VEGAS, NEVADA 89102
(702) 870-8771

PLOT & GRADING PLAN
A PORTION OF THE NORTH HALF (N 1/2) OF SECTION 19,
TOWNSHIP 20 SOUTH, RANGE 61 EAST, M.D.B.&M.
CITY OF LAS VEGAS, CLARK COUNTY, NEVADA

SHEET 3 OF 4
PRAL. NO. VSH-PG

F.B. 181, PG. 28-29

107-V2485
24-2-89