

MATCH LINE 7+10.32
SEE SHEET NO. 7

STA. 7+10.44
7+14.5 W.M. 37.2' LT.

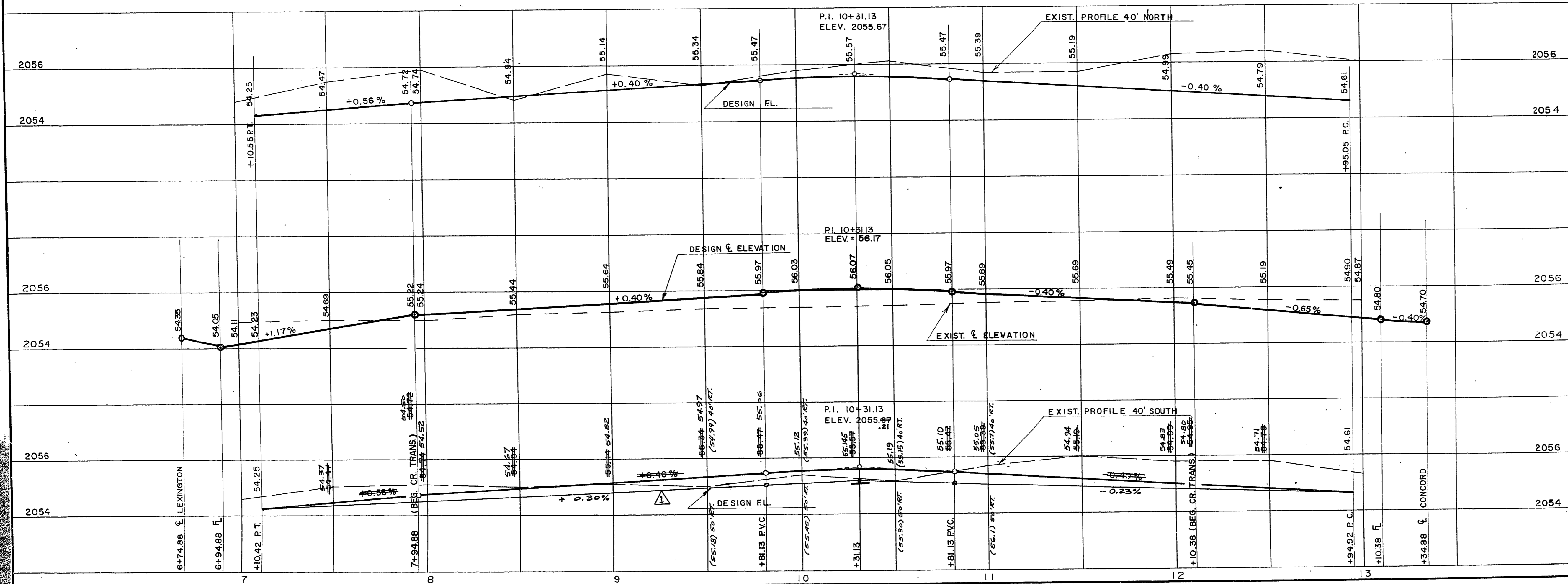
MATCH LINE
SEE SHEET NO. 13

- 7+32.7 W.M. 32.1' RT. 41.6' RT. & 7+34.3 CONC. 28' RT.
- 7+48 & 12' DRIVEWAY
- 7+59.3 END CONC. 28.3' RT.
- 7+61.5 END BLDG. 47.8' RT.
- 7+85.2 MANHOLE
- 8+01.6 & 3' WALK 28.2' RT.
- 8+27.7 W.M. 42.5' RT. 8+34.5 & 12' DRIVEWAY
- 8+66.6 W.M. 42.2' RT. 8+74.8 & 12' DRIVEWAY
- 9+09.3 W.M. 36.8' RT. 9+15.2 & 12' DRIVEWAY
- 9+49.5 EDGE OF A.C. 17.7' RT.
- 9+73.6 BEGIN CONC. SLAB 20.6' RT.
- 9+94 & 32' COMM'L. DRWY.
- 10+15.1 END CONC. SLAB 20.5' RT.
- 10+32.3 W.M. 25' RT.
- 10+48 & 16' COMMERCIAL DRWY.
- 10+63 EDGE OF A.C. 18' RT. 10+67.6 W.M. 38.8' RT. 10+74.7 & 12' DRIVEWAY
- 11+07.2 W.M. 38.6' RT. 11+14.2 & 12' DRIVEWAY
- 11+27.5 MANHOLE
- 11+48 W.M. 37.4' RT. 11+54.6 & 12' DRIVEWAY
- 11+86.5 W.M. 40.2' RT. 11+94.6 & 12' DRIVEWAY
- 12+28 W.M. 35.9' RT. 12+37 & 18' DRIVEWAY
- 12+55.7 TREE 2' DIA. 40' RT.
- 12+67 W.M. 39.1' RT. 12+74.7 & 12' DRIVEWAY
- 12+85.5 BEGIN FENCE 39.6' LT. 12+90.5 & 4' WALK 33.6' LT.
- 12+96.8 BEGIN BLDG. 40.9' LT. 12+98.8 TREE 1.5' DIA. 29.7' LT. 12+47.2 MAIL BOX 38.3' LT. 12+57.8 STUMP 17' DIA. 29.1' LT.
- 12+69.3 TREE 18" DIA. 29.1' LT. 12+72.5 END BLDG. 37.5' LT.

* NOTE: FIRE STATION (9+45 TO 10+65)

APPROXIMATE QUANTITIES THIS SHEET

ITEM	DESCRIPTION	CONST. NOTE NO.	C.L.V.	S.I.D.	TOTAL	UNIT
201.1001	EXCAVATION	(1)	275	211	486	CY
201.1004	REMOVE A.C. PAVEMENT	(2)	2249	186	96	LF
200.1100	REMOVE CONCRETE SIDEWALK	(4)	109	79	2,435	SY
200.1103	REMOVE CONCRETE DRIVEWAY RESIDEN	(7)	1098	1098	109	SF
200.300	REMOVE TREE (4 IN - 10 IN)	(8)	2	2	2	EA
200.400	REMOVE TREE (COVER TO IN.)	(9)	6	6	6	EA
201.1006	REMOVE WOOD FENCE	(13)	212	212	212	LF
340.226	COMMERCIAL DRIVEWAY	(18)	448	448	448	SF
340.216	RESIDENTIAL DRIVEWAY	(20)	2324	2324	2324	SF
340.114	CONCRETE SIDEWALK	(21)	3865	3865	3865	SF
340.014	"L" TYPE CURB AND GUTTER (24 IN)	(23)	773	773	773	LF
512.500	ADJUST SEWER MANHOLE	(23)	2	2	2	EA
334.112	6 INCH ASPHALT CONCRETE PAV. T.	(23)	1046	1046	1046	TN
334.003	1 1/2 IN AC PAVE S.L.	(23)	448	16	464	BL
333.100	BITUMINOUS FOG SEAL	(24)	448	16	464	BL
302.100	TYPE I GRAVEL BASE	(19)	43	11	54	CY
302.200	TYPE II GRAVEL BASE	(19)	130	130	130	CY
340.134	PRIVATE CONCRETE WALK TRANSITION	(25)	103	103	103	SF
340.124	4 IN CONCR DRIVEWAY TRANSITIONS	(25)	665	665	665	SF



THIS IS A COPY (W.P.A.R.) OF THE ORIGINAL SHEET.

BM NO. 06121B4 RIVET IN PLATE SW COR. HIGHLAND DR. & CAREY AVE. ELEV. 2059.68'

NO.	DESCRIPTION	BY	DATE	APPROVAL
	Lower Design Flow Line on South to Allow Drainage from Fire Station	C.C.B.	3/23/76	[Signature]

CITY OF LAS VEGAS NEVADA
DEPARTMENT OF PUBLIC WORKS
SERVICES DIVISION

VEGAS HEIGHTS MILLER AVENUE
STA. 7+10.42 TO STA. 12+94.92

W.C. NO. 4171	F.B.K. NO. 73-3X	DATE	SC. (H) 1" = 30'	SC. (V) 1" = 2'	DES. W.L. JAUBERT	DR.	APPROVED BY DIRECTOR OF PUBLIC WORKS
						S.I.D. 417	FILE NO.
						10 APR. 74	6-20-75
						SHEET 47A OF 63	