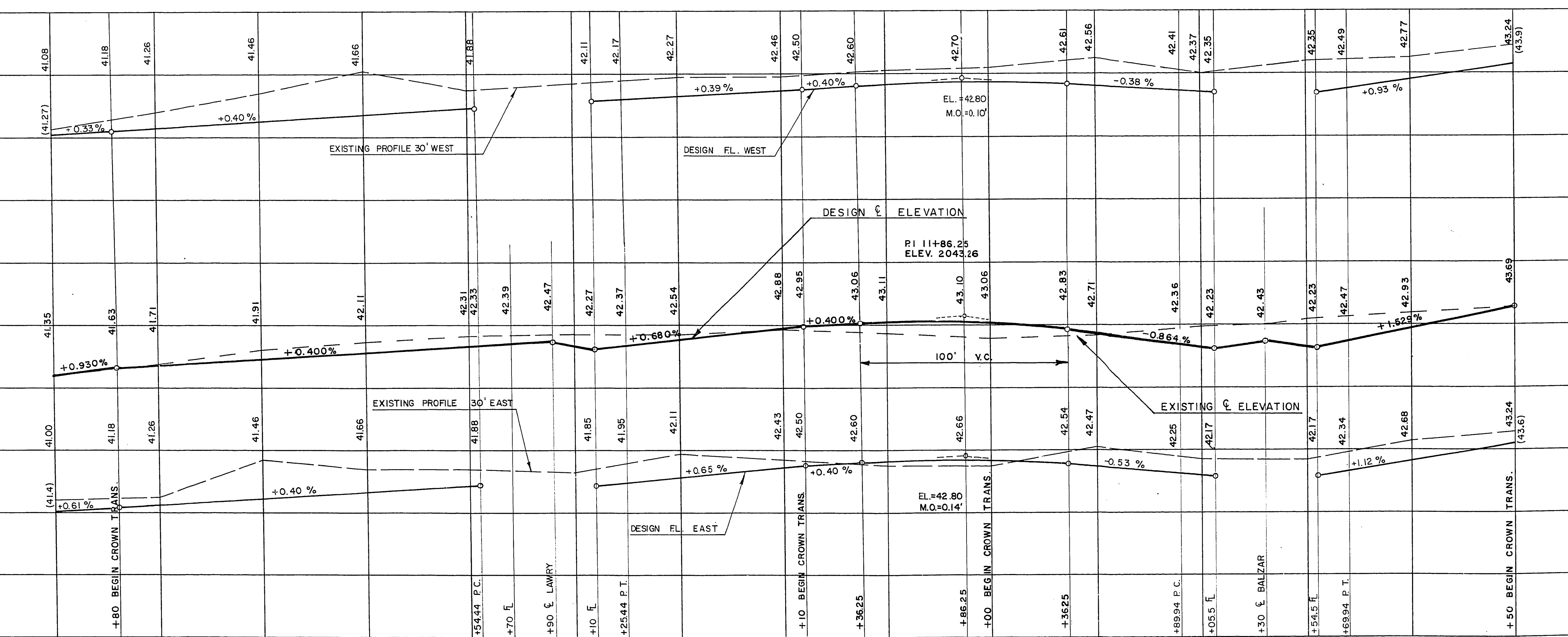


STA. 7+50

STA. 14+50

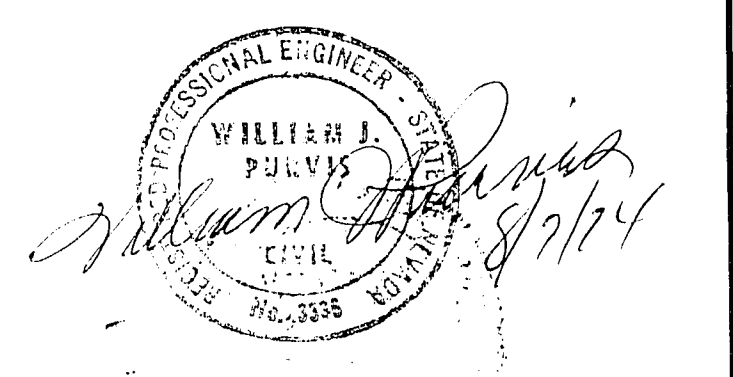
MATCH LINE SEE SHT. 14

MATCH LINE SEE SHT. 16




APPROXIMATE QUANTITIES THIS SHEET

ITEM	DESCRIPTION	CONST. NOTE NO.	C. L. V.	S. I. D.	TOTAL	UNIT
201.1001	EXCAVATION	(2)	836	239	1075	CY
201.1002	REMOVE A.C. PAVEMENT	(9)	1913		1913	SY
340.216	RESIDENTIAL DRIVEWAY	(9)		567	567	SF
340.114	CONCRETE SIDEWALK	(2)		5741	5741	SF
340.014	"L" TYPE CURB AND GUTTER (24 IN)	(2)	1038		1038	LF
340.319	VALLEY GUTTER	(2)	1341		1341	SF
512.500	ADJUST SEWER MANHOLE	(2)		1	1	EA
334.112	6 INCH ASPHALT CONCRETE PAV. T.	(2)	1084		1084	TN
333.100	BITUMINOUS FOG SEAL	(2)	465		465	GL
302.100	TYPE I GRAVEL BASE	(9)(2)(2)	70	15	85	CY
302.200	TYPE II GRAVEL BASE	(9)(2)		103	103	CY
560.060	ADJUST WATER VALVE BOX	(2)		2	2	EA
340.225	COMMERCIAL DRIVEWAY	(9)		182	182	SF



BM NO. 06121D11 RIVET IN PLATE
S. SIDE LAKE MEAD & LA SALLE
ELEV. 2041.26

NO.	DESCRIPTION	BY	DATE	APPROVAL
REVISIONS				


Department of Public Works
Engineering Division

VEGAS HEIGHTS
LA SALLE STREET

STA. 7+50 TO 14+50

scale (h) 1" = 30'	scale (v) 1" = 2'	drawing no.
w.o.no. 4171	f.bk.no. 73-6X	SID 417
design by W.L. JAUBERT	drawn by	date 10 APR. 74
approved by Director of Public Works	date 6-20-75	sht. 15 of 63