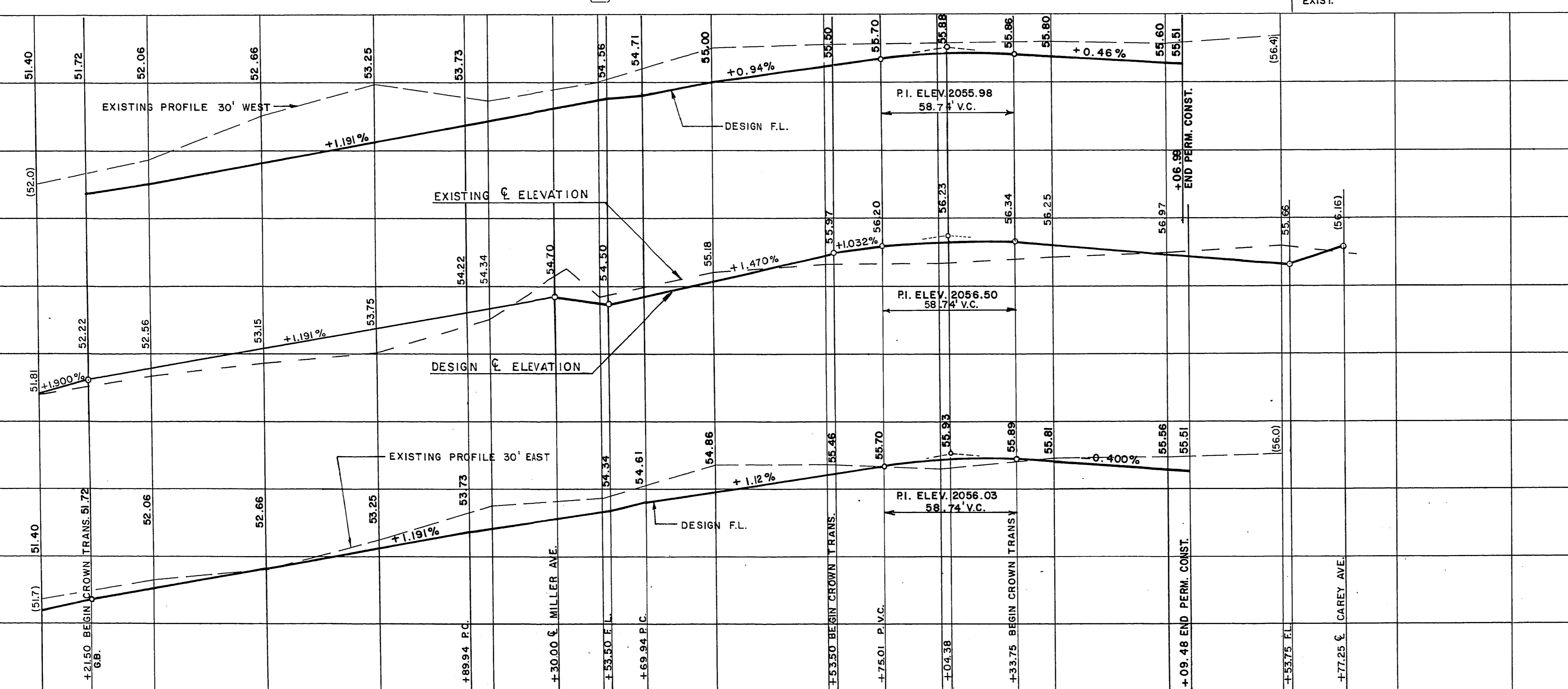


MATCH LINE SEE SHT. 12

21+29 TREE 6" DIA. (DEAD) 32.2' RT.
 21+46 TREE 10" DIA. (DEAD) 32.2' RT.
 21+68 P.P. 27.5' RT.
 21+69 BEGIN FENCE 30.2' RT.
 21+94 E 12' DRIVEWAY

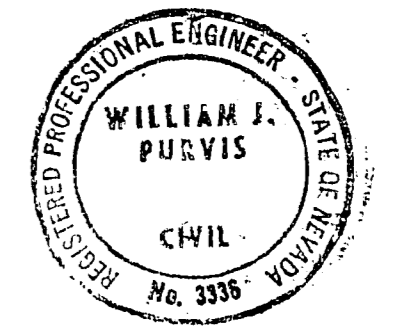


21 22 23 24 25 26 27

+21.50 BEGIN CROWN TRANS. 51.72 G.B.
 +52.00 F.L.
 +52.22 F.L.
 +52.56 F.L.
 +53.15 F.L.
 +53.75 F.L.
 +54.22 F.L.
 +54.34 F.L.
 +54.70 F.L.
 +54.86 F.L.
 +55.34 F.L.
 +55.50 F.L.
 +55.70 F.L.
 +55.86 F.L.
 +55.97 F.L.
 +56.20 F.L.
 +56.34 F.L.
 +56.50 F.L.
 +56.66 F.L.
 +56.80 F.L.
 +56.97 F.L.
 +57.25 F.L.

APPROXIMATE QUANTITIES THIS SHEET

ITEM	DESCRIPTION	CONST. NOTE NOS.	C.L.V. S.I.D.	TOTAL	UNIT
201.1001	EXCAVATION		820	1063	CY
201.1004	SAWCUT A.C.	1	375	375	LF
201.1002	REMOVE A.C. PAVEMENT	2	1883	1883	SY
201.1003	REMOVE A.C. CURB	3	113	113	LF
201.1006	REMOVE WOOD FENCE	4	315	315	LF
200.300	REMOVE TREE (4-10 IN.)	5	42	42	EA
200.400	REMOVE TREE (OVER 10 IN.)	6	4	4	EA
340.114	CONCRETE SIDEWALK	7	4475	4475	SF
340.014	1" TYPE CURB AND GUTTER (24 IN.)	8	864	864	LF
512.500	ADJUST SEWER MANHOLE	9	1	1	EA
334.112	6 INCH ASPHALT CONCRETE PAV. T.	10	967	967	TN
333.100	BITUMINOUS FOG SEAL	11	547	547	GL
302.200	TYPE I GRAVEL BASE	12	187	187	CY
340.319	VALLEY GUTTER	13	98	98	LF
340.216	RESIDENTIAL DRIVEWAY	14	501	501	SF
331.800	BITUMINOUS PRIME COAT	15	280	280	GF
334.004	2 IN. A.C. PAVEMENT S.L.	16	263	263	GF
334.912	A.C. CURB	17	103	103	LF
560.060	ADJUST WATER VALVE BOX	18	113	113	EA
		19	4	4	EA



BM NO. 0612012 RIVET IN PLATE
 SE COR. LAKE MEAD & "J" ST.
 ELEV. 2044.69'

NO.	DESCRIPTION	BY	DATE	APPROVAL

CITY OF LAS VEGAS
CLARK COUNTY, NEVADA

Department of Public Works
Engineering Division

VEGAS HEIGHTS
CONCORD STREET

STA. 21+00 TO CAREY AVENUE

scale (h) 1" = 30'
 W.O. no. 4171
 design by W.L. JAUBERT
 approved by Director of Public Works

scale (v) 1" = 2"
 f.b.k. no. 73-6X
 drawn by
 date

drawing no. **SID 417**
 date 10 APR. 74
 sht. 13 of 63