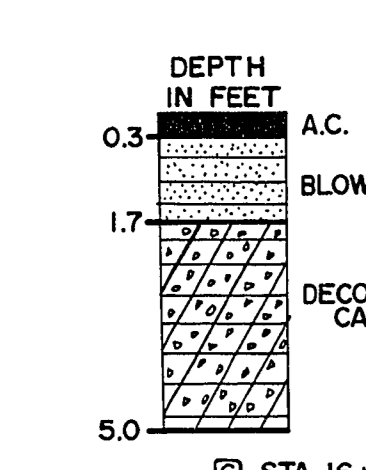
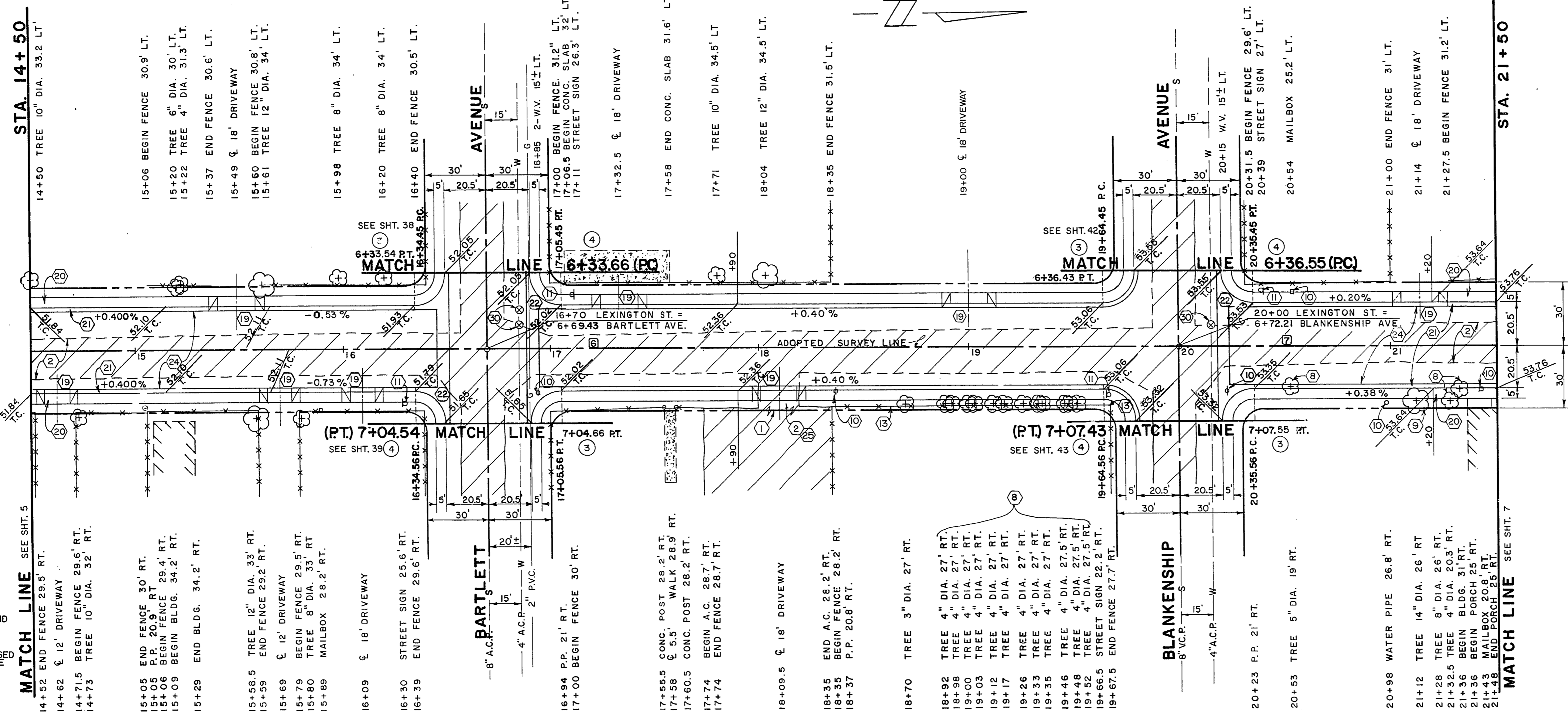
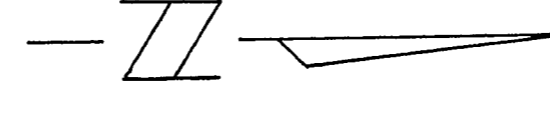


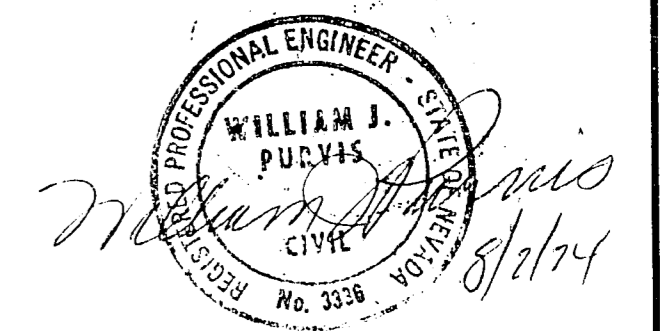
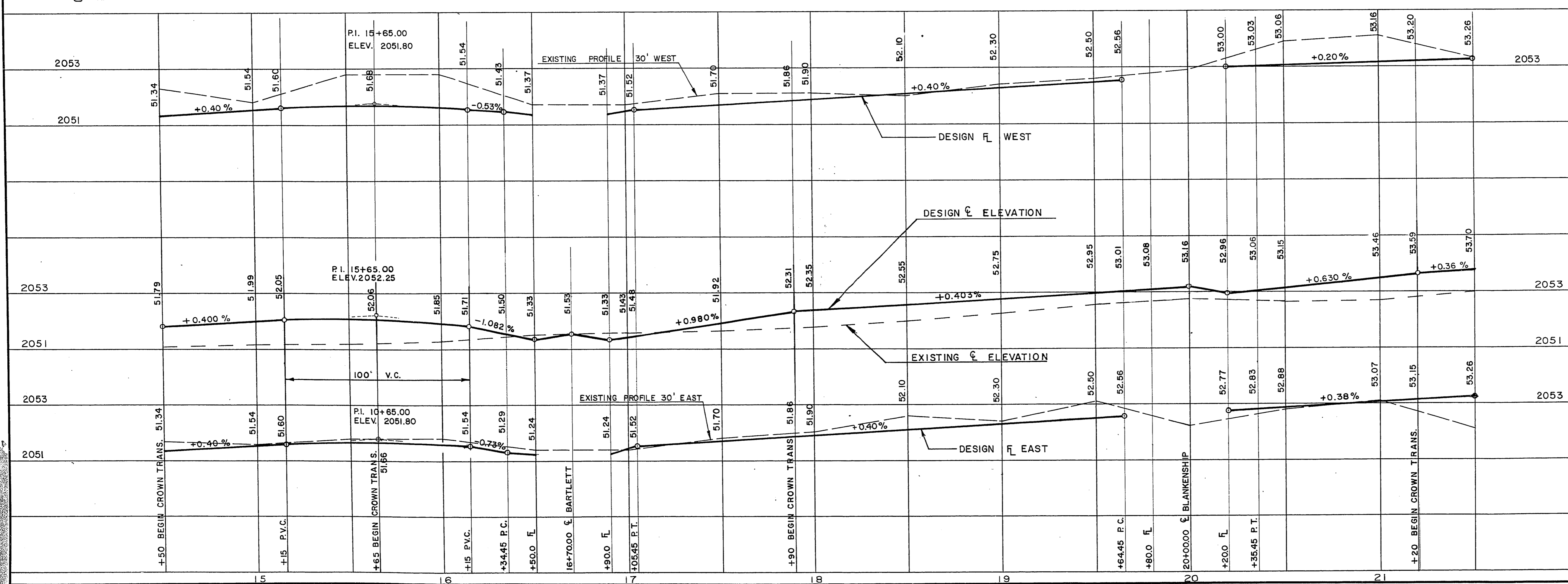
LEXINGTON STREET



TEST HOLES (16) STA 16+67
(17) STA 20+50

APPROXIMATE QUANTITIES THIS SHEET

ITEM	DESCRIPTION	CONST. NOTE NOS.	C.L.V. S.I.D.	TOTAL UNIT
201.1001	EXCAVATION	(1)	89	303 CY
201.1004	SAWCUT A.C.	(2)	20	20 LF
201.1002	REMOVE A.C. PAVEMENT	(3)	1850	2010 SY
200.300	REMOVE TREE (4 IN - 10 IN.)	(4)	15	15 EA
200.400	REMOVE TREE (OVER 10 IN.)	(5)	1	1 EA
201.1006	REMOVE WOOD FENCE	(6)	142	142 LF
340.216	RESIDENTIAL DRIVEWAY	(7)	1372	1372 SF
340.114	CONCRETE SIDEWALK	(8)	5386	5386 SF
340.014	"L" TYPE CURB AND GUTTER (24 IN)	(9)	968	968 LF
340.319	VALLEY GUTTER	(10)	1341	1084 TN
334.112	6 INCH ASPHALT CONCRETE PAV. T.	(11)	1084	2 TN
334.003	1 1/2 IN AC PAVE S.L.	(12)	465	468 GL
303.100	BITUMINOUS FOG SEAL	(13)	71	85 CY
302.100	TYPE I GRAVEL BASE	(14)	108	108 CY
302.200	TYPE II GRAVEL BASE	(15)	3	3 EA
560.060	ADJUST WATER VALVE BOX	(16)	3	3 EA



JUN 27 1975

BM NO. 06121B1 RIVET IN PLATE NW
CORNER LAKE MEAD & HIGHLAND
ELEV. 2052.70

REVISIONS

NO.	DESCRIPTION	BY	DATE	APPROVAL

CITY OF LAS VEGAS
CLARK COUNTY, NEVADA

Department of Public Works
Engineering Division

VEGAS HEIGHTS
LEXINGTON STREET

STA. 14+50 TO STA. 21+50

scale (h) 1" = 30'	scale (v) 1" = 2'	drawing no. SID 417
w.o.no. 4171	f.bk.no. 73-6X	date 10 APR 74
design by W.L. JAUBERT	drawn by	approved by Director of Public Works
approved by Director of Public Works	date 6-20-75	sht. 6 of 63

107-V924 5/14/75