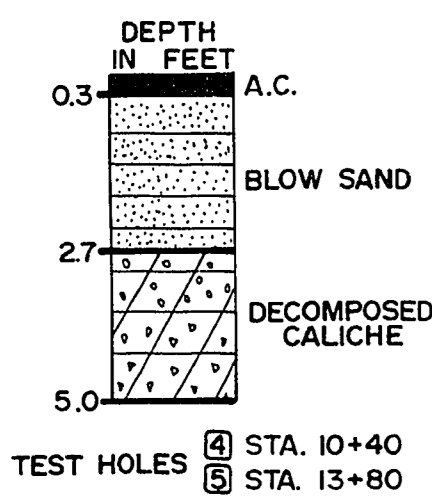
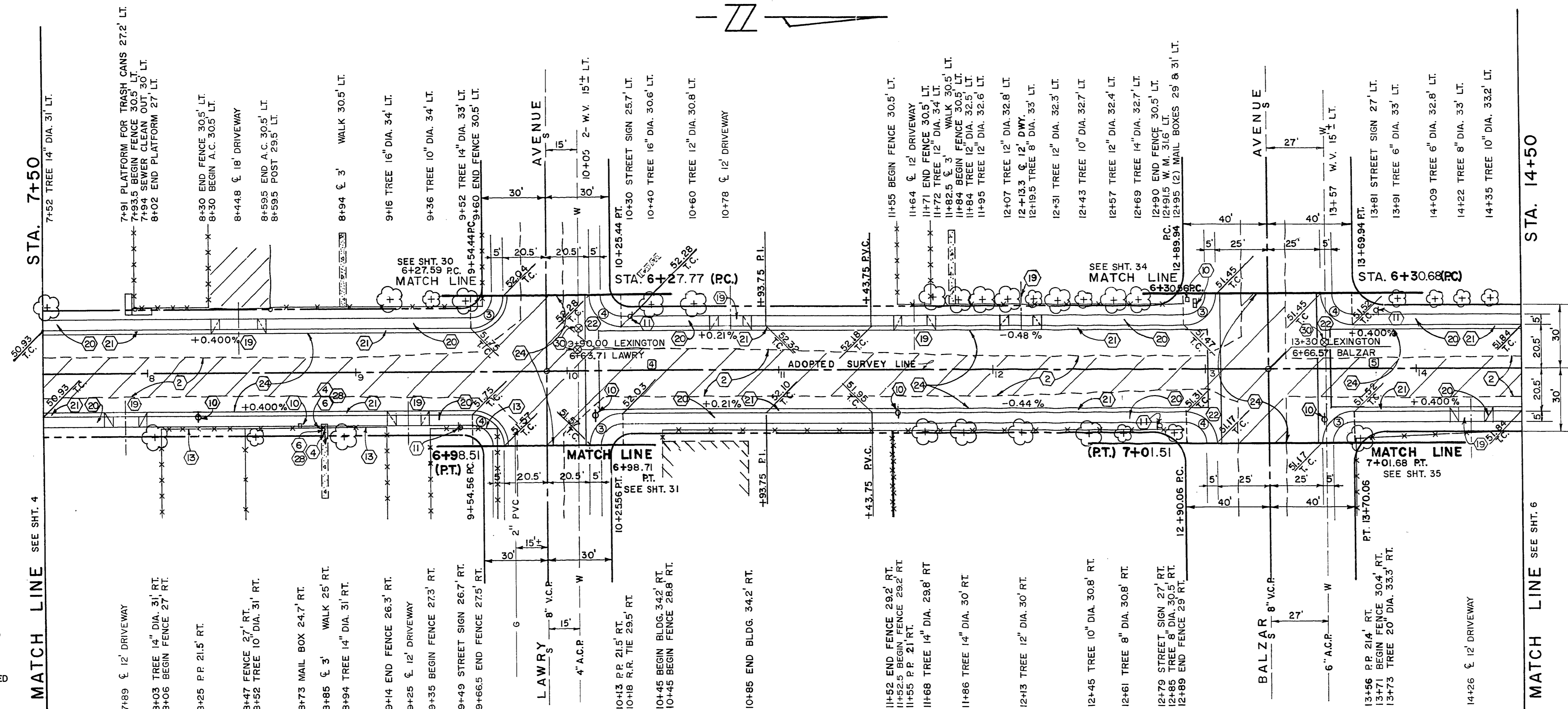
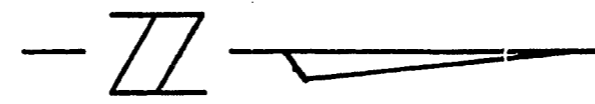
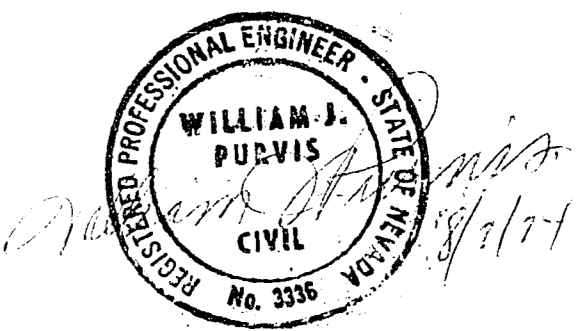


LEXINGTON STREET



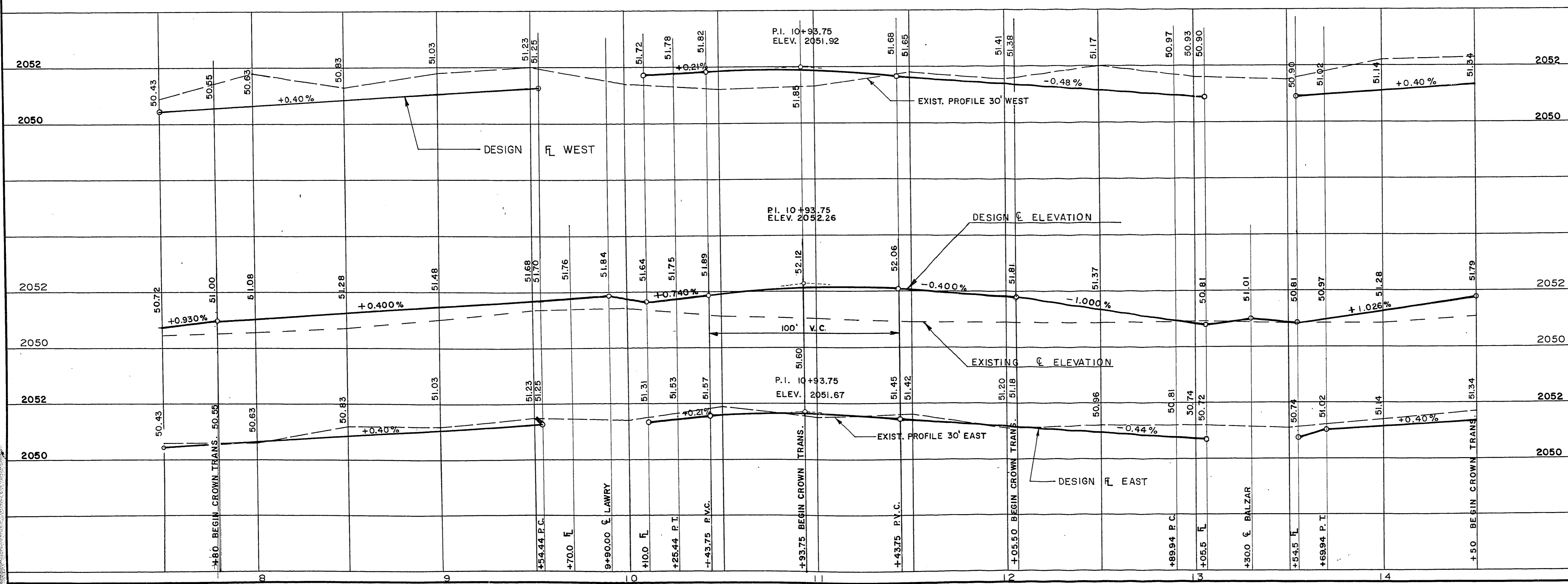
APPROXIMATE QUANTITIES THIS SHEET

ITEM	DESCRIPTION	CONST. NOTE NOS.	C. L. V.	S. I. D.	UNIT	TOTAL
201.1001	EXCAVATION	(2)	75	243	CY	318
201.1002	REMOVE A. C. PAVEMENT	(2)	1842		SY	1842
200.1100	SAWCUT CONCRETE	(4)		3	LF	3
200.1105	REMOVE CONCRETE SIDEWALK	(4)		15	SF	15
201.1006	REMOVE WOOD FENCE	(3)		160	LF	160
340.216	RESIDENTIAL DRIVEWAY	(6)		1022	SF	1022
340.114	CONCRETE SIDEWALK	(2)		5546	SF	5546
340.014	'L' TYPE CURB AND GUTTER (2:1:1)	(2)	999		LF	999
340.319	VALLEY GUTTER	(2)	1341		SF	1341
334.112	6 INCH ASPHALT CONCRETE FAV. T.	(2)	1096		TN	1096
333.100	BITUMINOUS FOG SEAL	(2)	470		GL	470
302.100	TYPE I GRAVEL BASE	(2)	71	15	CY	86
302.200	TYPE II GRAVEL BASE	(2)		104	CY	104
340.134	PRIVATE CONCRETE WALK TRANSITION	(2)		14	SF	14
560.060	ADJUST WATER VALVE BOX	(3)		3	EA	3



CONTRACT DRAWING
JUN 27 1975

BM NO. 06121BI RIVET IN PLATE NW
CORNER LAKE MEAD & HIGHLAND
ELEV. 2052.70



NO.	DESCRIPTION	BY	DATE	APPROVAL
REVISIONS				

CITY OF LAS VEGAS
CLARK COUNTY, NEVADA

Department of Public Works
Engineering Division

VEGAS HEIGHTS
LEXINGTON STREET
STA. 7+50 TO STA. 14+50

scale (h) 1" = 30' scale (v) 1" = 2'
w.o.no. 4171 f.bk.no. 73-6X drawing no. **SID 417**
design by W. L. JAUBERT drawn by date 10 APR. 74
approved by Director of Public Works date 6-20-75 sht. 5 of 63