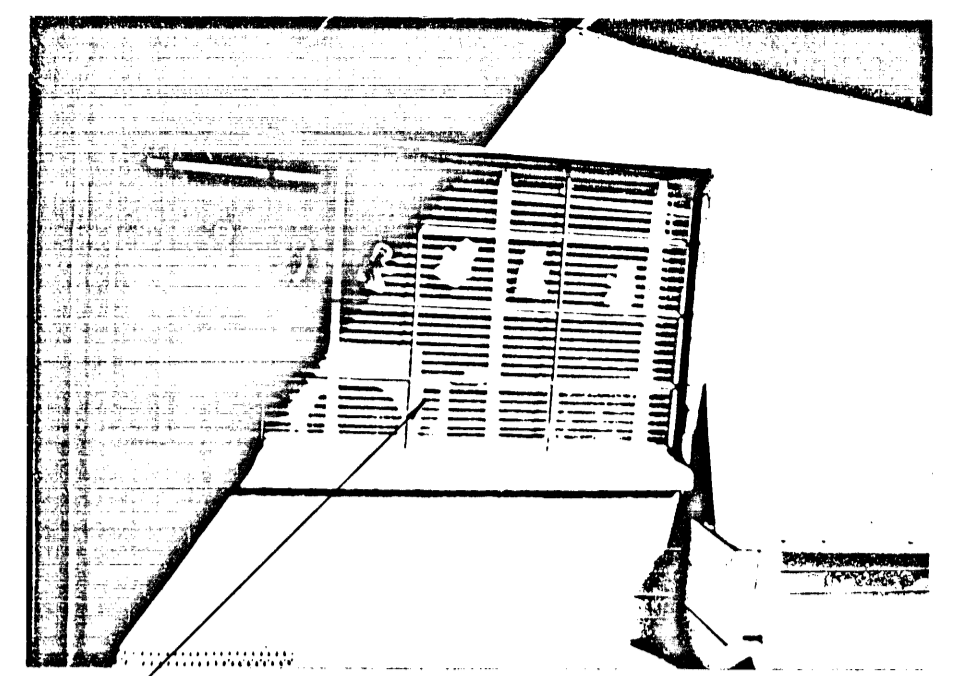
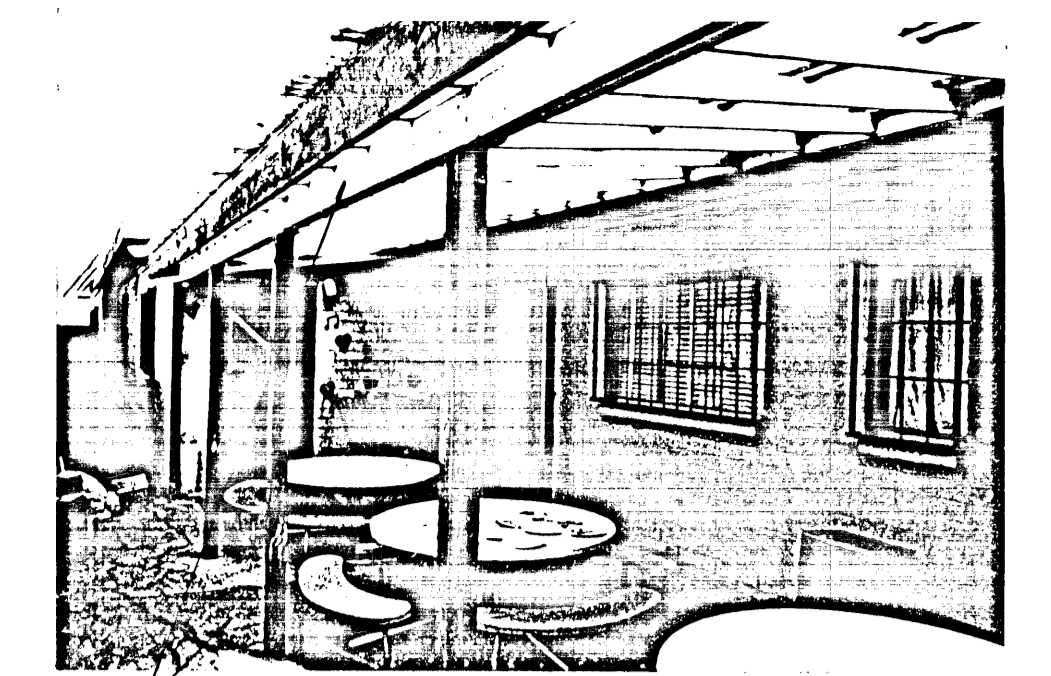


REMOVE EXISTING DOOR & WINDOW, BLOCK-IN w/NEW C.M.U. TO MATCH EXISTING & FIN. PER FIN. SCHEDULE (ADDITIVE ALT #3)



REMOVE EXISTING WINDOW, BLOCK-IN w/NEW C.M.U. TO MATCH EXISTING & FIN. PER FIN. SCHEDULE

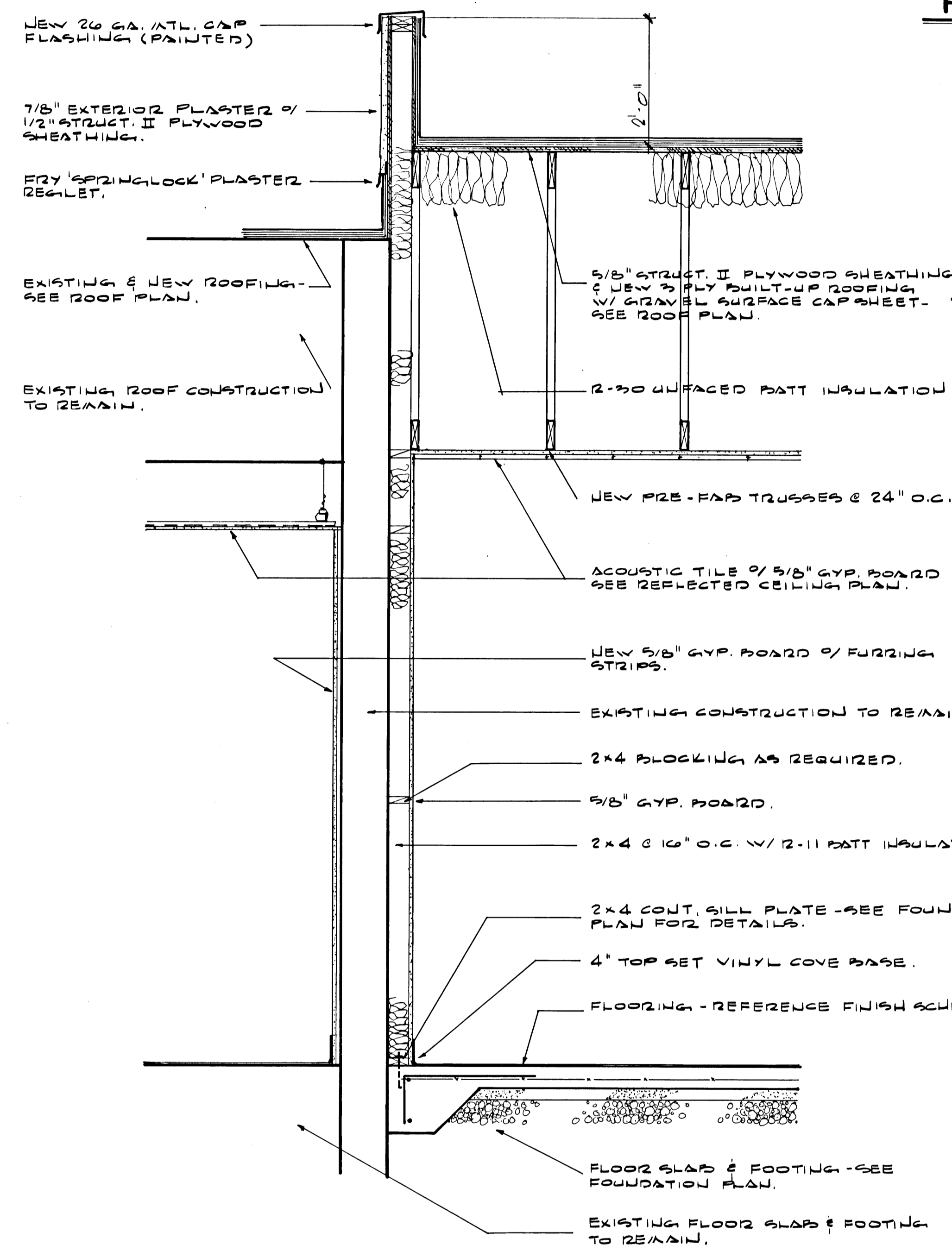


REMOVE EXISTING OVERHANG & CONC. PATIO - PREPARE GRADE TO RECEIVE NEW CONC. SLAB PER PLAN

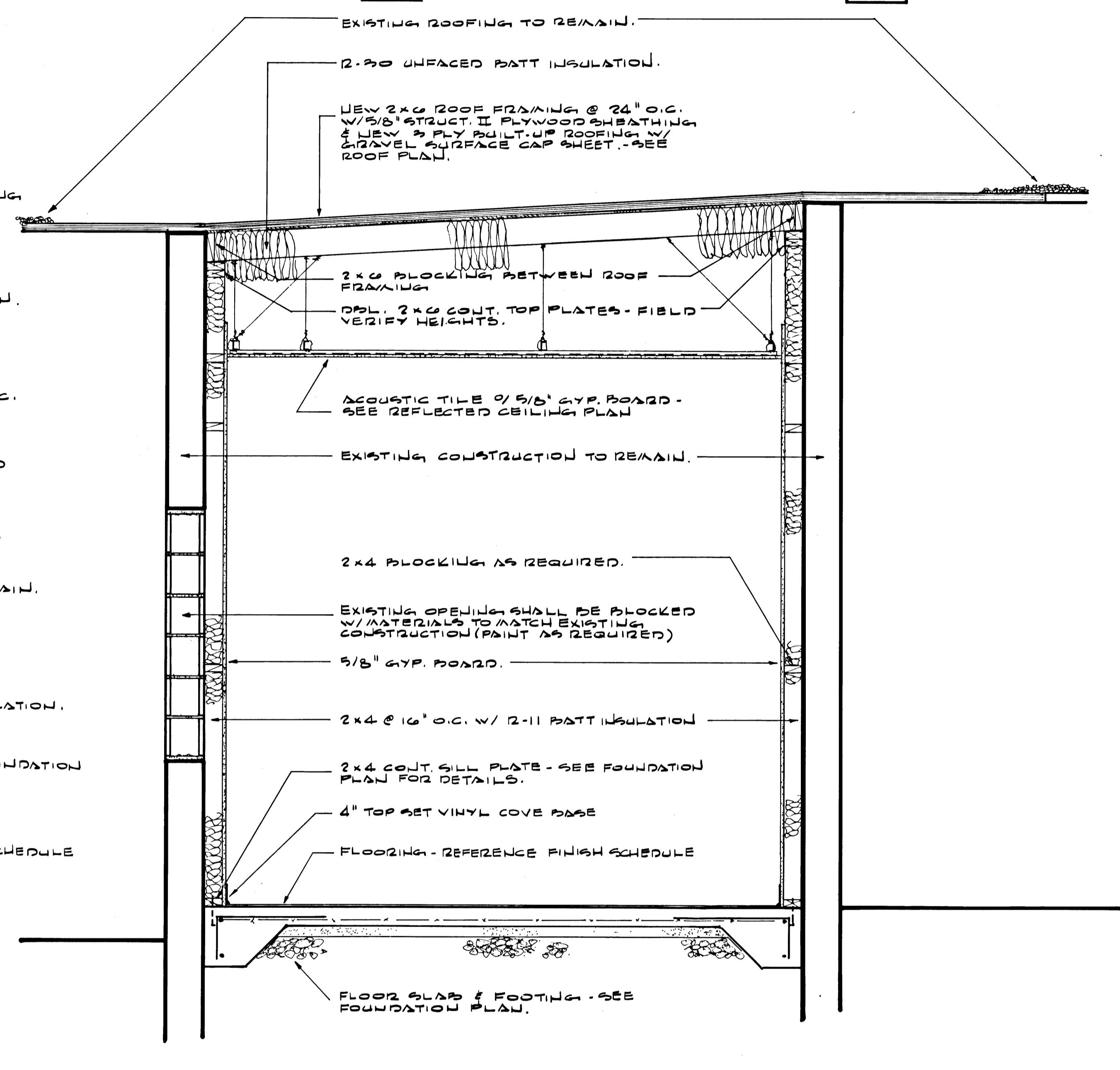
PHOTO DETAIL 1 A.15

PHOTO DETAIL 2 A.15

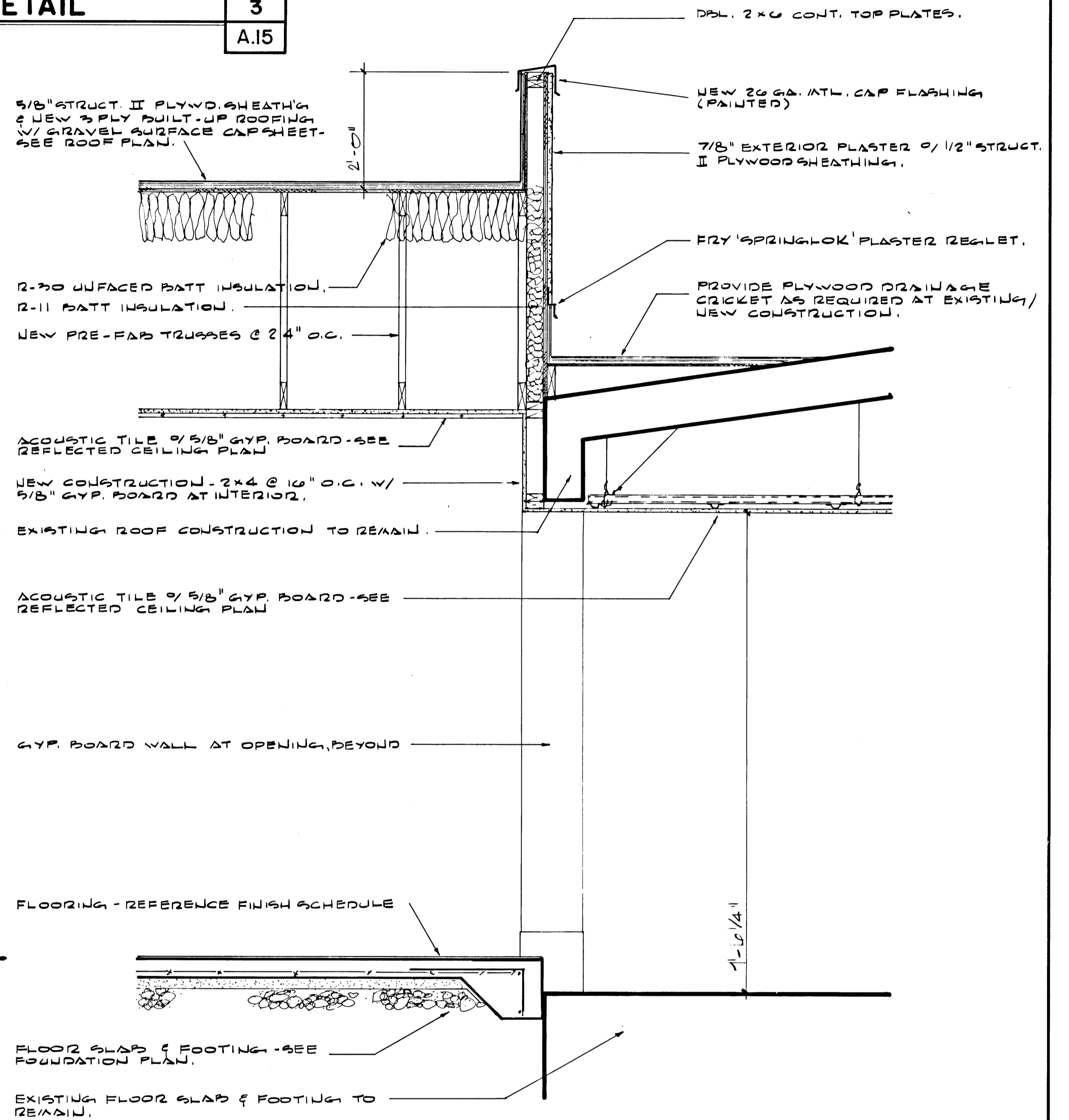
PHOTO DETAIL 3 A.15



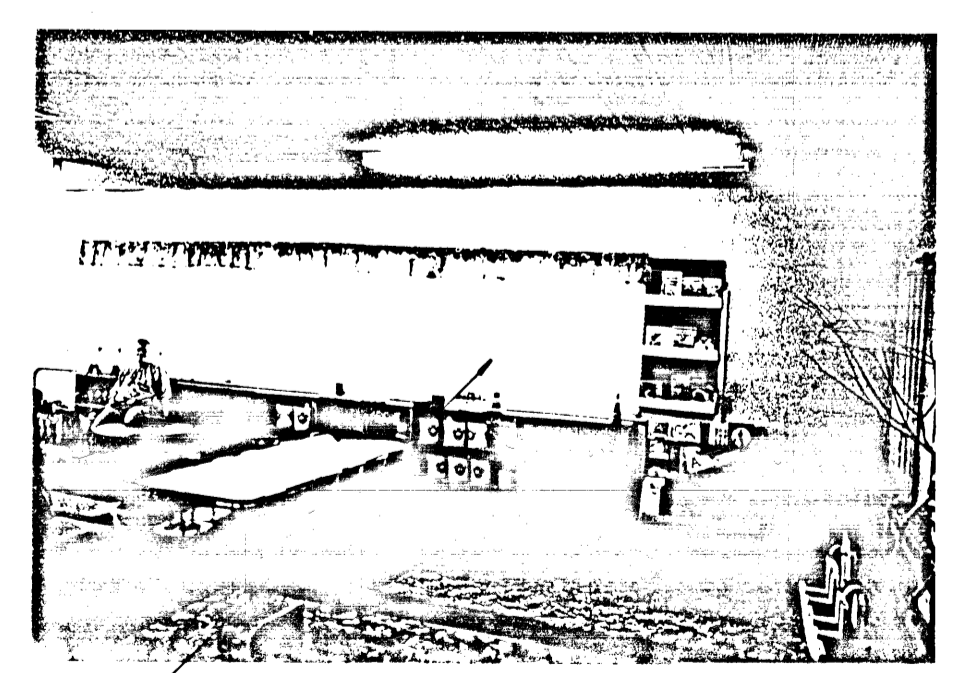
WALL SECTION - 5 A.15 3/4" = 1'-0"



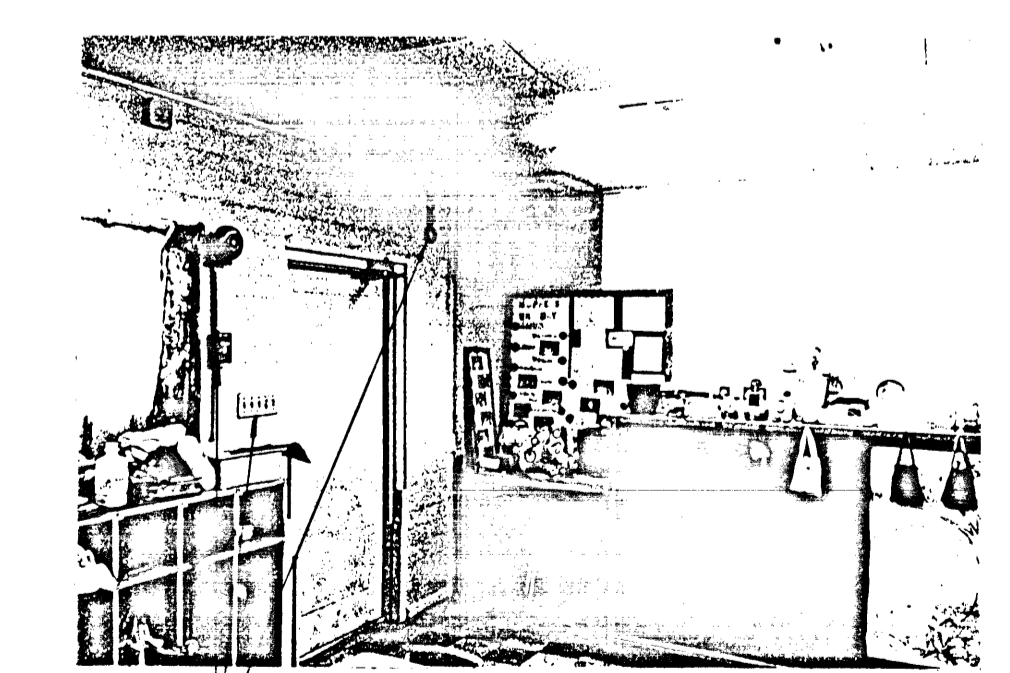
WALL SECTION - 4 A.15 3/4" = 1'-0"



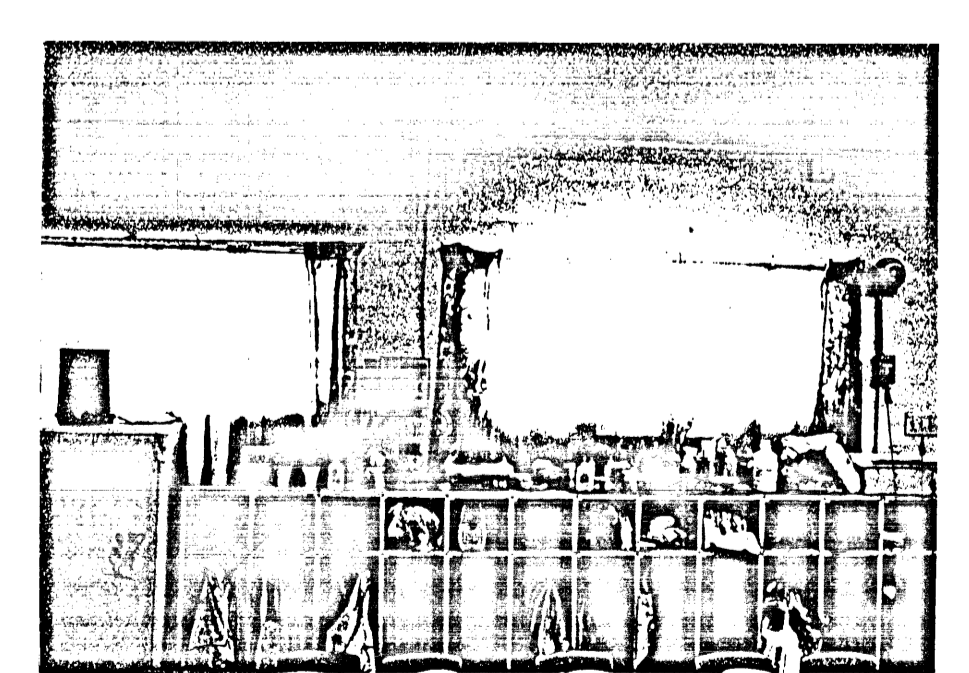
WALL SECTION - 3 A.15 3/4" = 1'-0"



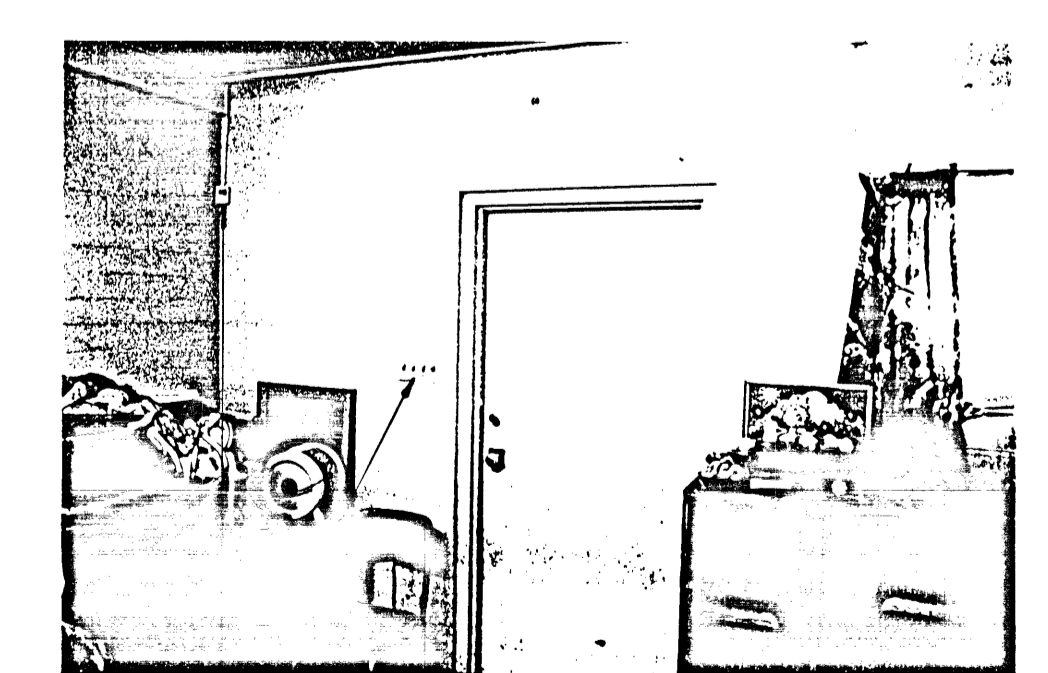
REMOVE EXISTING WINDOW, BLOCK-IN w/NEW C.M.U. TO MATCH EXISTING & FINISH AS REQ'D TO INCLUDE PAINTING



REMOVE & RELOCATE ALL SURFACE INTO ELECTRICAL FIXTURES PER PLAN & SPECS. TO RECEIVE NEW FURRING



SEE PHOTO DET. 5/15



SEE PHOTO DET. 5/15



SEE PHOTO DET. 5/15

PHOTO DETAIL 4 A.15

PHOTO DETAIL 5 A.15

PHOTO DETAIL 6 A.15

PHOTO DETAIL 7 A.15

PHOTO DETAIL 8 A.15

CITY OF LAS VEGAS
400 EAST STEWART AVENUE
LAS VEGAS, NEVADA 89101

ARCHITECT • GERALD GARADICH & ASSOCIATES A.I.A.
2300 FIFTH AVENUE, SUITE 201, SAN DIEGO, CA 92101 (619) 233-7296
2300 PASO DEL PRADO, C. 108, LAS VEGAS, NV 89102 (702) 367-4445

PHASE I (VARIETY CLUB)
"D" STREET / JEFFERSON AVENUE
NEIGHBORHOOD FACILITY PROJECT

WALL SECTIONS

drawn by: dan l. neider
issue dates:
11/3/88
11/22/88 bidding

revisions:
2/1/89 2nd bidding

job no.: 8737 LV.

A.15

23



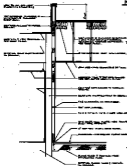
PHOTO DETAIL
1.01



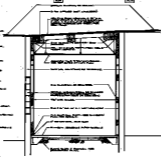
PHOTO DETAIL
1.02



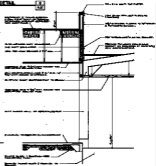
PHOTO DETAIL
1.03



WALL SECTION
1.04



WALL SECTION
1.05



WALL SECTION
1.06



PHOTO DETAIL
1.07



PHOTO DETAIL
1.08



PHOTO DETAIL
1.09



PHOTO DETAIL
1.10



PHOTO DETAIL
1.11

CITY OF LAS VEGAS
300 EAST STEWART AVENUE
LAS VEGAS, NEVADA 89101

PROJECT: DESIGN OF THE LAS VEGAS
SECURITY + DESIGN CENTER
ARCHITECT: HOK
DATE: 10/15/11
SHEET: 1 OF 1
WALL SECTION
A19
1/8" = 1'-0"