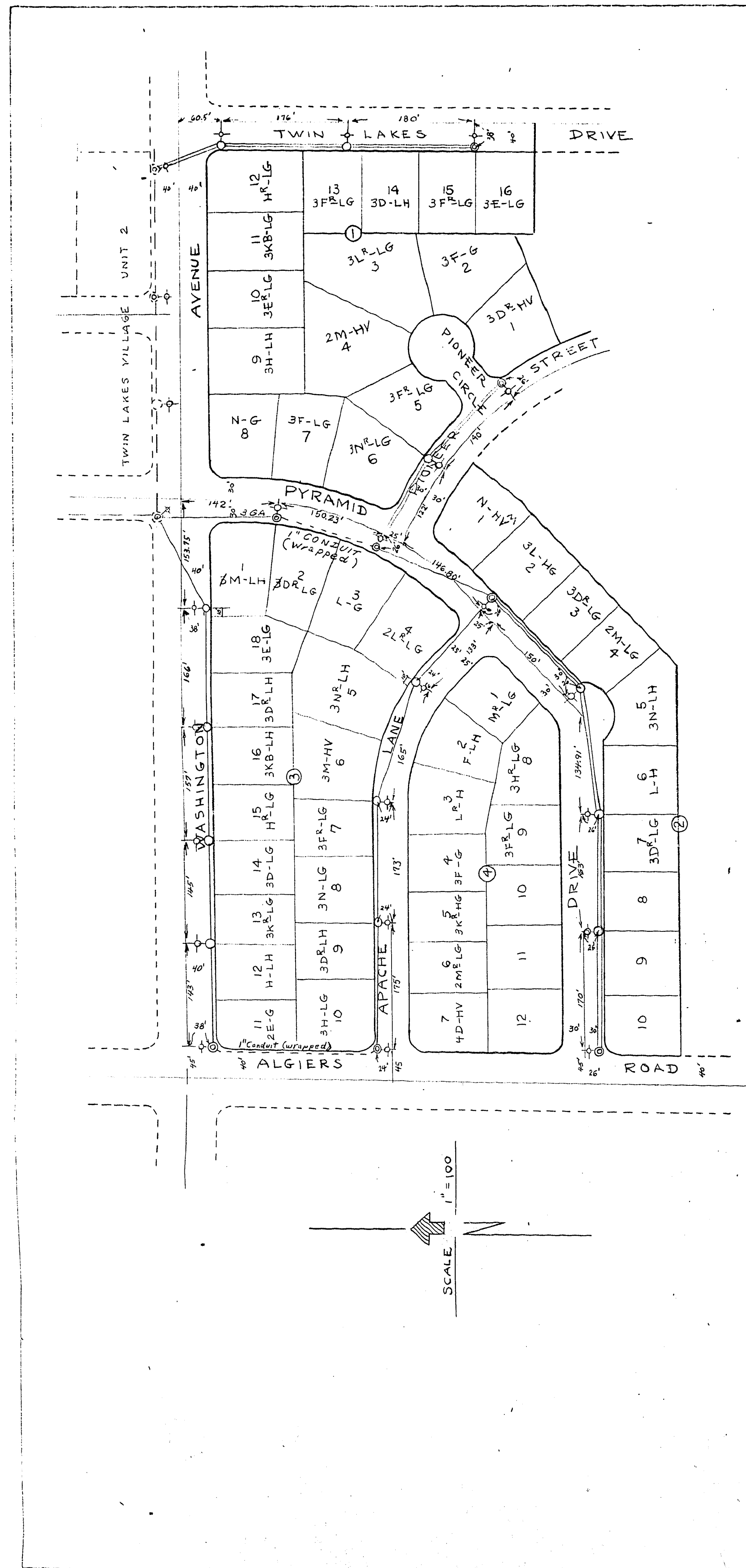


STREET LIGHTING LAYOUT TWIN LAKES ESTATES, UNIT I

PORTION OF NE1/4 OF SE1/4 OF SECTION
30..T20S, R61E, MDB&M
LAS VEGAS, CLARK COUNTY, NEVADA



LEGEND

- ⊕ 11 Gauge light pole - Foundation 2x2x4'
- ⊕ 3 Gauge light pole - Foundation 2x2x5'
- Overhead Conductor
- - - Wrapped Conductor

SPECIFICATION

Lighting Standard shall be Union Metal design 477 C1.
No. H 305131 or approved equal.
Luminaire shall be Line Material Co. Cat. No. 602800 C628
Type III with 1 1/2" slip filler or approved equal with 2500
lumen group replacement lamp.
Wire shall be No. 6 bare medium hard drawn copper.
Wire from overhead line to luminaire shall be No. 8 RR 5kv
Circuit to be connected to Twin Lakes Village, Unit 2, Street
Lighting Circuit.

Approved: *L. S. Bassett*
City Electrician

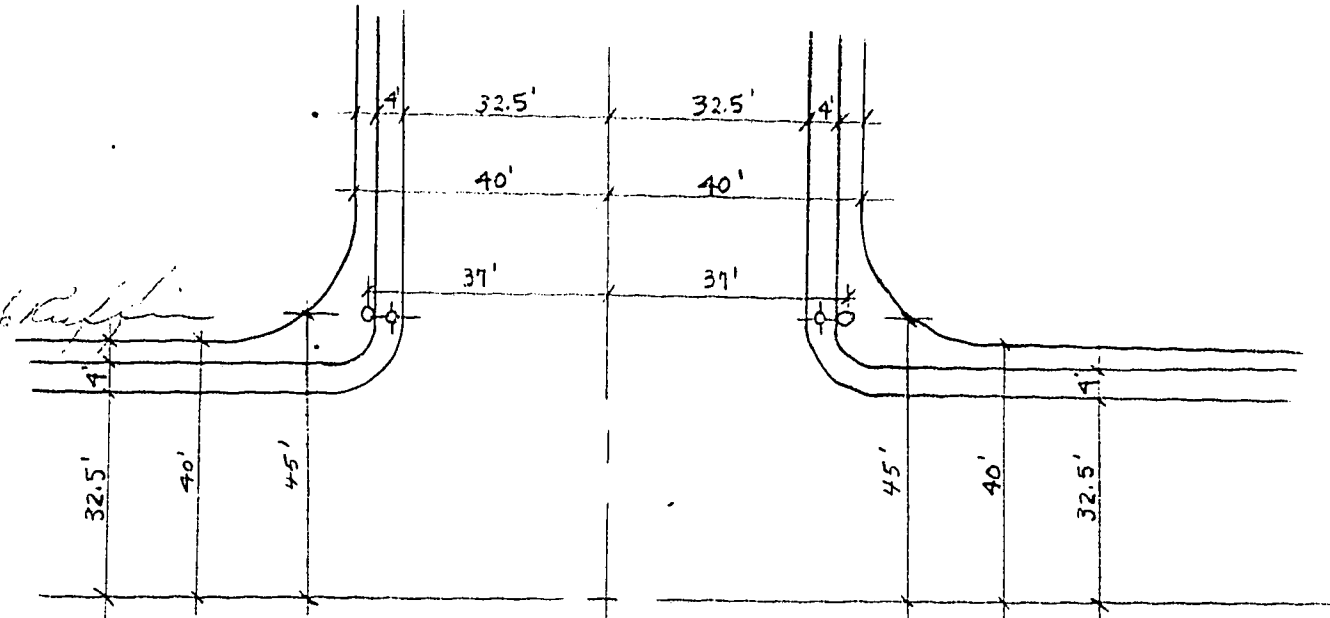
W. H. ...
Director of Public Works

Power Location Approval For
Southern Nevada Power Co.
...

REVISION: Aug 14, 1956
WRAPPED CONDUIT ON PYRAMID DRIVE

APPROVED: *W. H. ...*
City Electrician

W. H. ...
Director of Public Works



DETAIL

AS BUILT

**CITY OF LAS VEGAS
ENGINEERING DEPT.**

Approval of this plan by the City of Las Vegas, Nevada,
does not relieve the Subdivider of responsibility for errors
in calculation, design, or planning by the Subdivider's
Engineer or Surveyor.

APPROVED AS TO DESIGN ONLY

Contractor will be responsible for all
details, dimensions and conformity to
the design drawings.

Date: 1-18-56
By: *...*

25843 36