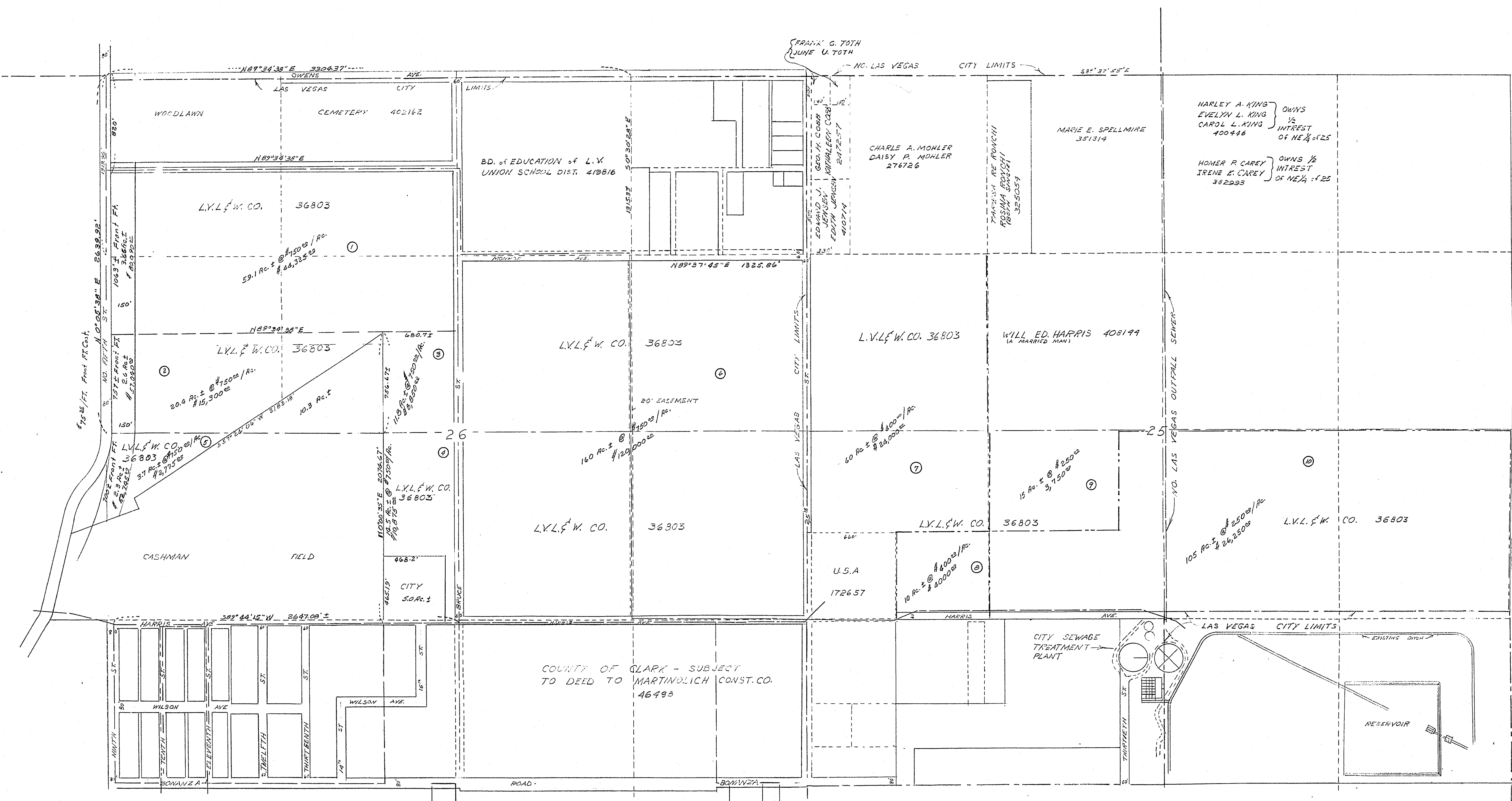


15-42



SECTIONS 25 & 26, T. 20 S, R. 61 E, M.D.B. & M.

LEGEND

---	1/4" LINE
---	CENTER LINE
---	EXISTING SEWER
---	PROPOSED TRUNK SEWER
---	EXISTING WATER
---	PROPOSED STREET
---	EXISTING STREET

NOTES:
 THE ABOVE INFO. WAS OBTAINED FROM URR RECORDS
 AND PIONEER TITLE & TRUST CO. AREA & DISTANCE
 MAY BE SUBJECT TO MINOR CHANGE

CHURCH	294 Ac. ± @ \$192,075/Ac	+ Front	\$89,090.00	= \$272,165.00
CITY	1422 Ac. ± @ \$54,400/Ac	+ Front	\$77,040.00	= 1,111,440.00
ELKS	182 Ac. ± @ \$13,650/Ac	+ Front	\$2,475.00	= 65,325.00
				TOTAL COST \$450,000.00

C-20-29

CITY OF LAS VEGAS NEVADA
ENGINEERING DEPT.

SEC. 25 & 26 T. 20 S, R. 61 E, M.D.B. & M.
 LAYOUT

DESIGNED BY	SCALE 1" = 400'
DRAWN BY	FIELD BOOK NO.
CHECKED BY	WORK ORDER NO.
APPROVED	DRAWING NO.
CITY ENGR.	3012 W1

REVISIONS		
NO.	BY	DESCRIPTION